

DEPT. OF BUILDING INSPECTION
CITY OF PORTLAND, ME
SEP 10 2003
RECEIVED

USE
SITE PLAN
DWIGHT D. BAKER
WARREN AVENUE
PORTLAND, MAINE

OCT. 2000 SCALE: 1"=20'

SURVEYED BY:
LEROY A. WITHAM P.L.S. # 900
P.O. BOX 6786
SCARBORO, MAINE
Used for [Signature]

I hereby certify that this survey conforms to the Maine Board of Registration for Land Surveyors. Category 1 Condition 3

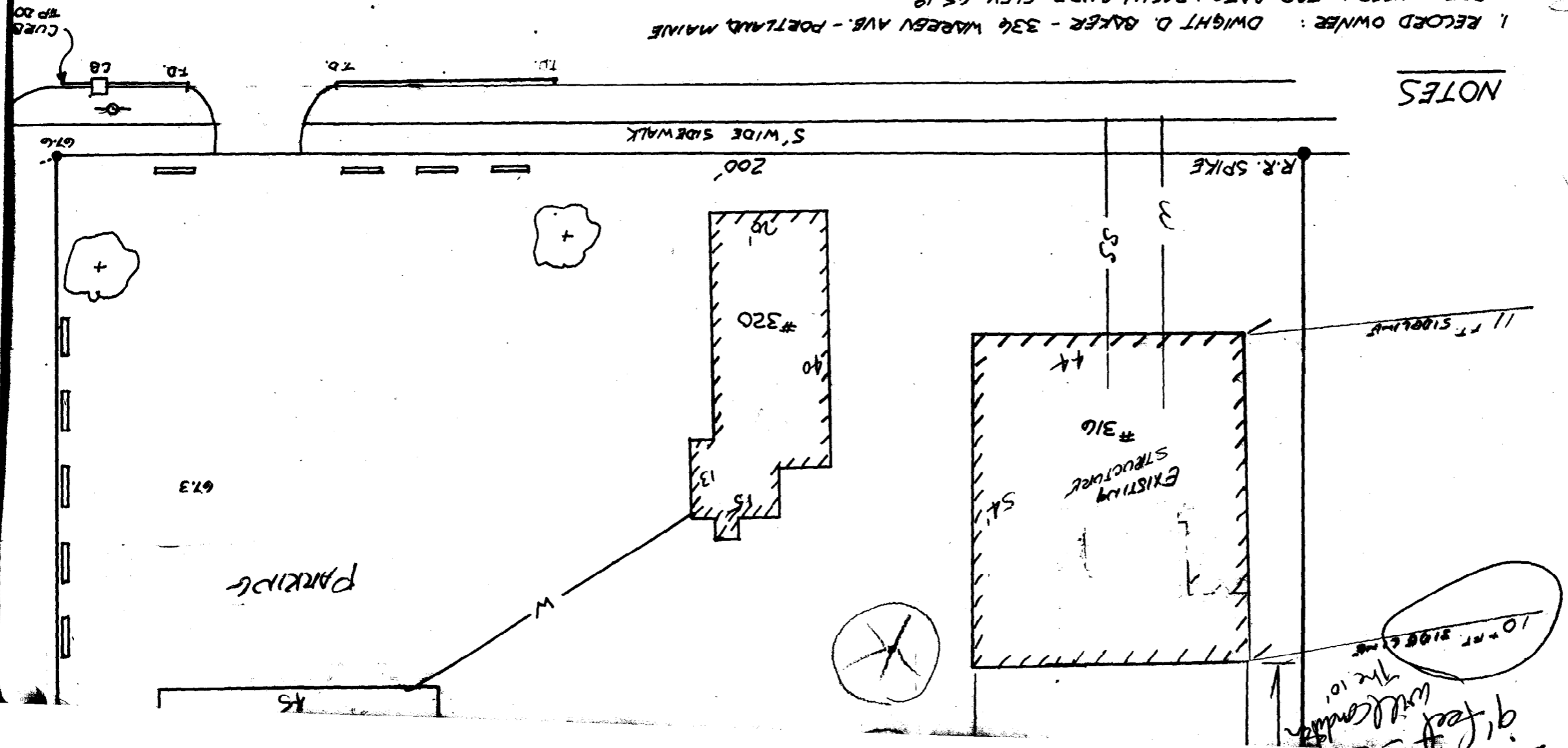
[Signature]

PLAN APPROVED BY CITY OF PORTLAND
SENIOR PLANNER

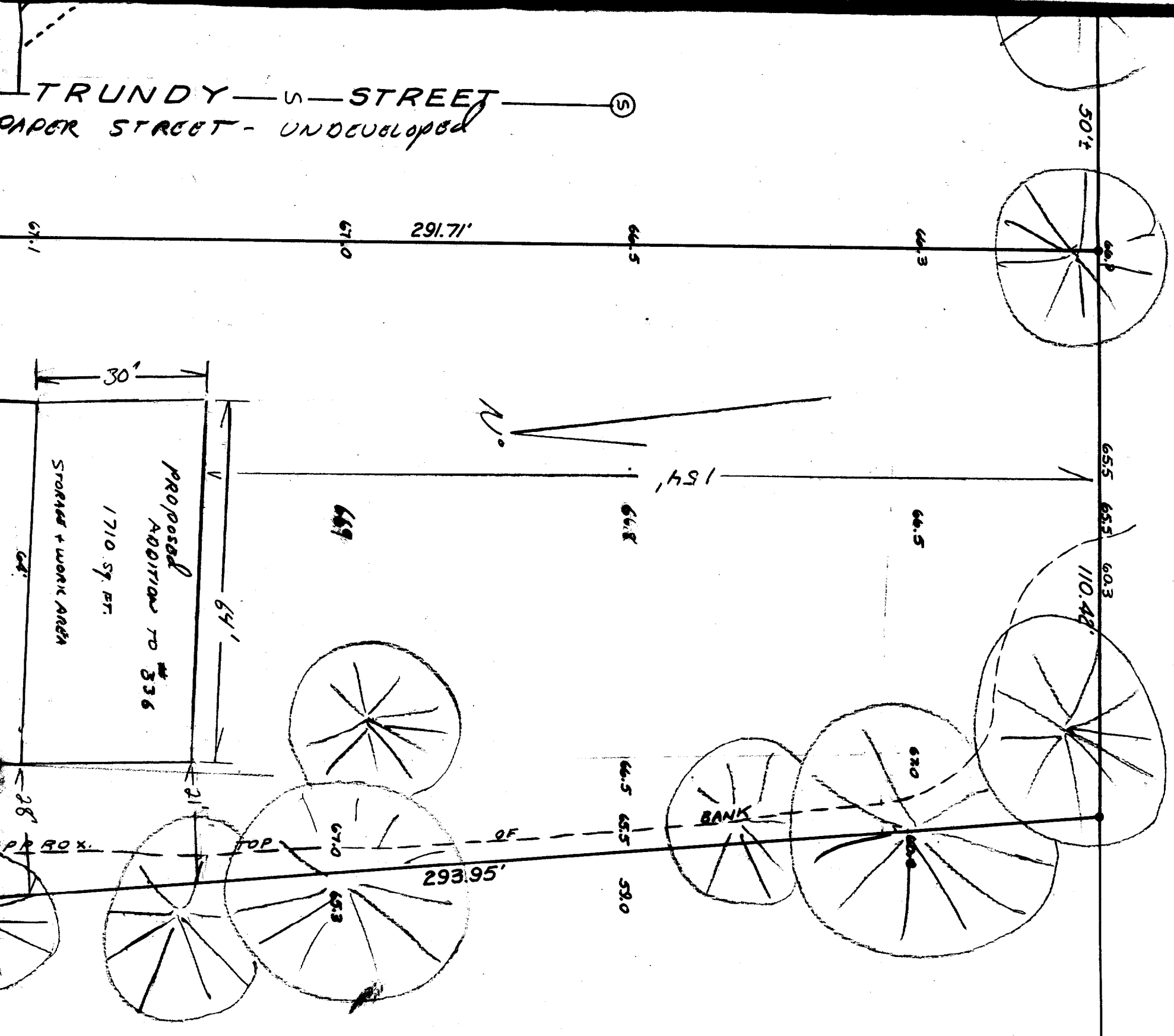
DATE:

1. RECORD OWNER: DWIGHT D. BAKER - 336 WARREN AV. - PORTLAND, MAINE
2. DATUM USED: TOP CATCH BASIN CURB, ELEV. 65.19
3. NO GRANITE TIP DOWN SECTION OR CURB FURNISHED BY CITY ENGINEER
4. THE ENTIRE SITE SHALL BE DEVELOPED AND/OR MAINTAINED AS DEPICTED ON THIS SITE PLAN. APPROVAL OF THE PLANNING AUTHORITY OR PLANNING BOARD SHALL BE REQUIRED FOR ANY ALTERATIONS TO OR DEVIATIONS FROM THE APPROVED SITE PLAN, INCLUDING WITHOUT LIMITATION: TOPOGRAPHY, DRAINAGE, LANDSCAPING, RETENTION OF WOODS OR LAWN AREAS, ACCESS, SIZE, LOCATION AND SURFACING OF PARKING AREAS, AND LOCATION AND SIZE OF BUILDINGS.
5. UTILITIES:
 - a) POWER & WATER FROM 320 WARREN AVE (EXISTING BLDGS)
 - b) SEWER FROM EXISTING MAIN ON TRUNDY STREET

NOTES

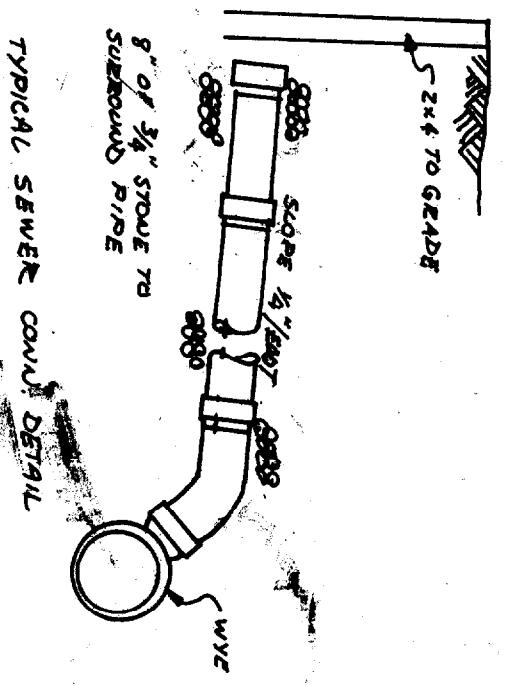
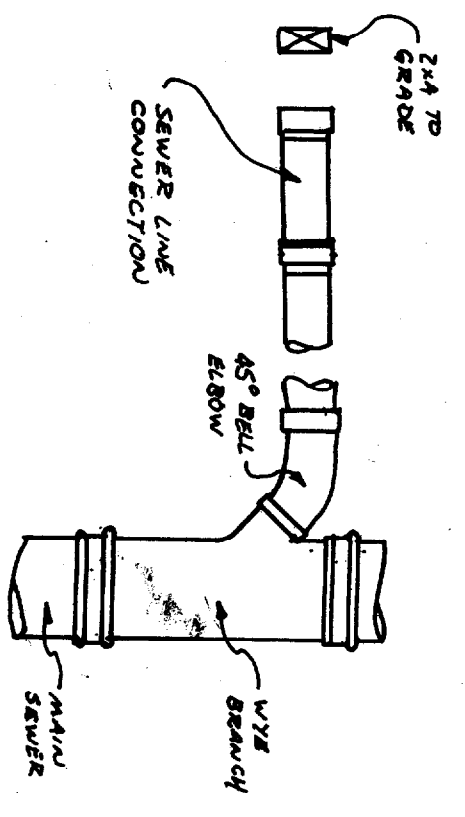


230
37.59
287.56



LEGEND

- 5/8" REBAR
- AFO. NOW OR FORMERLY OF
- W — WATER LINE
- CATCH BASIN
- S — SEWER LINE
- ⊙ (S) SEWER MANHOLE
- ⊙ (O) CMPD UTILITY POLE
- + NEW TREES
- - - - - PROPOSED SEWER + O.W. ST.



OIL-WATER SAND TRAP

STILL A PAPER
Per Jim Robbins 9/19/03

10 FT. SIDEWALK
N 10'

WESTERN STREET

250'

3759'

PROPOSED
ADDITION
#316
#316

43'

167.5'
SCALE

66.7

117'

67.0

55'

65'

PROPOSED ADDITION
TO 324
2900 sq. ft.

40'

126'

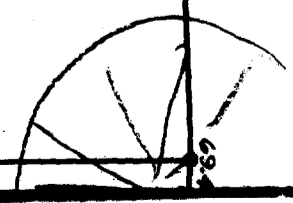
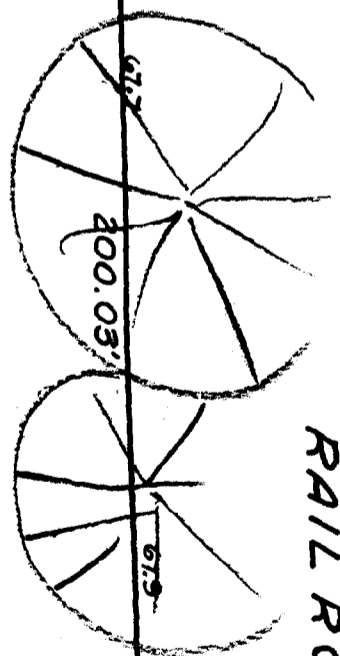
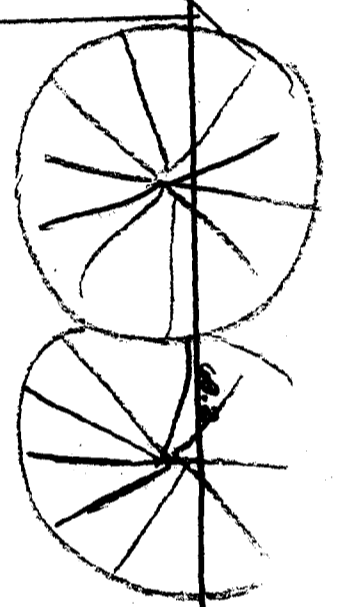
66.9

67.5

67.5

66.9

67.1



RAILROAD

EXISTING
CONCRETE

EXIST.

EXIST.

66.5