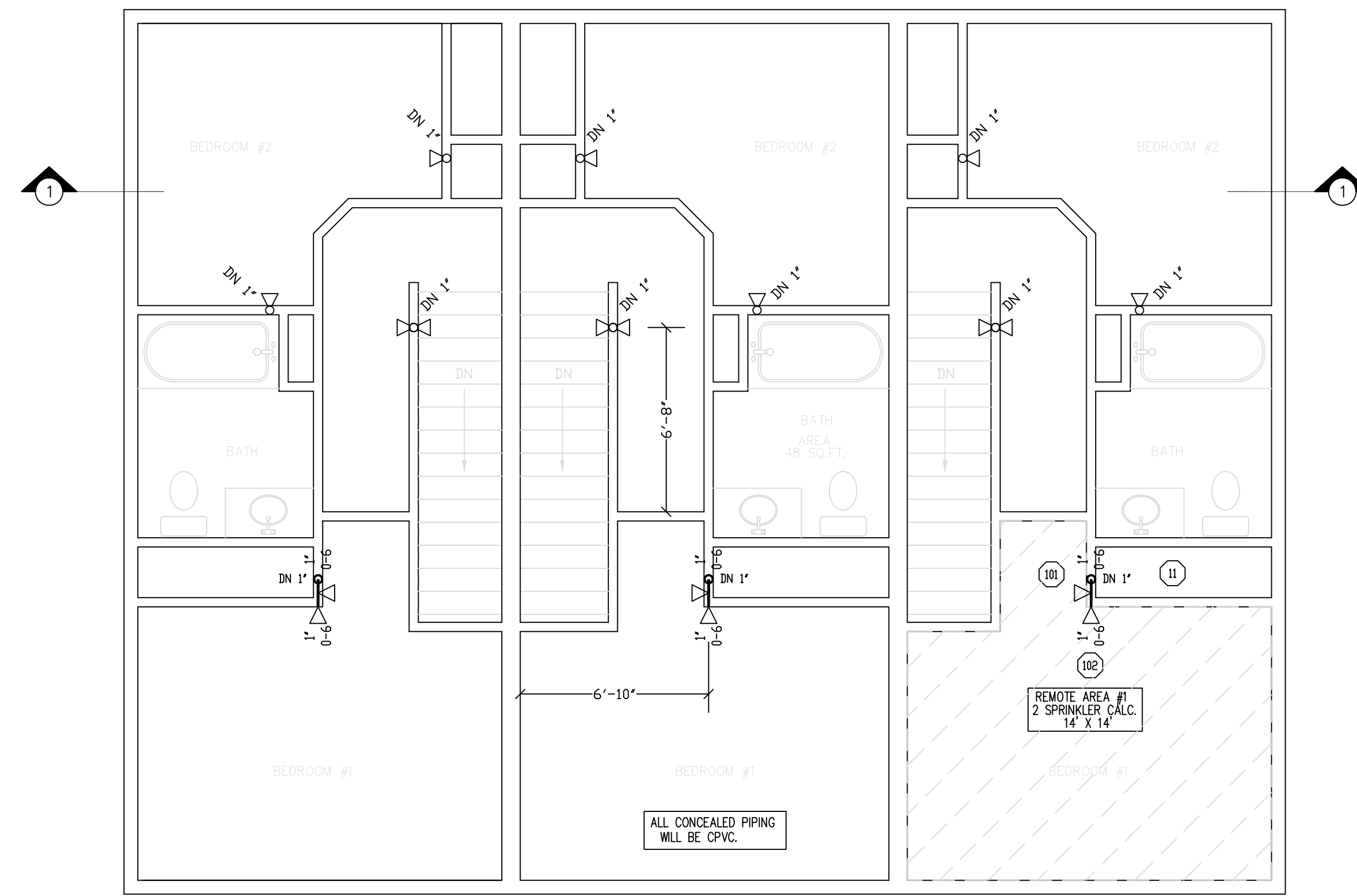


NOTE ON PLAN: "A" DIMENSION  
 PIPE SIZES 1" THROUGH 4" - ROD SIZE 3/8"  
 PIPE SIZES 5" THROUGH 8" - ROD SIZE 1/2"  
**TYPE #10 HANGER**

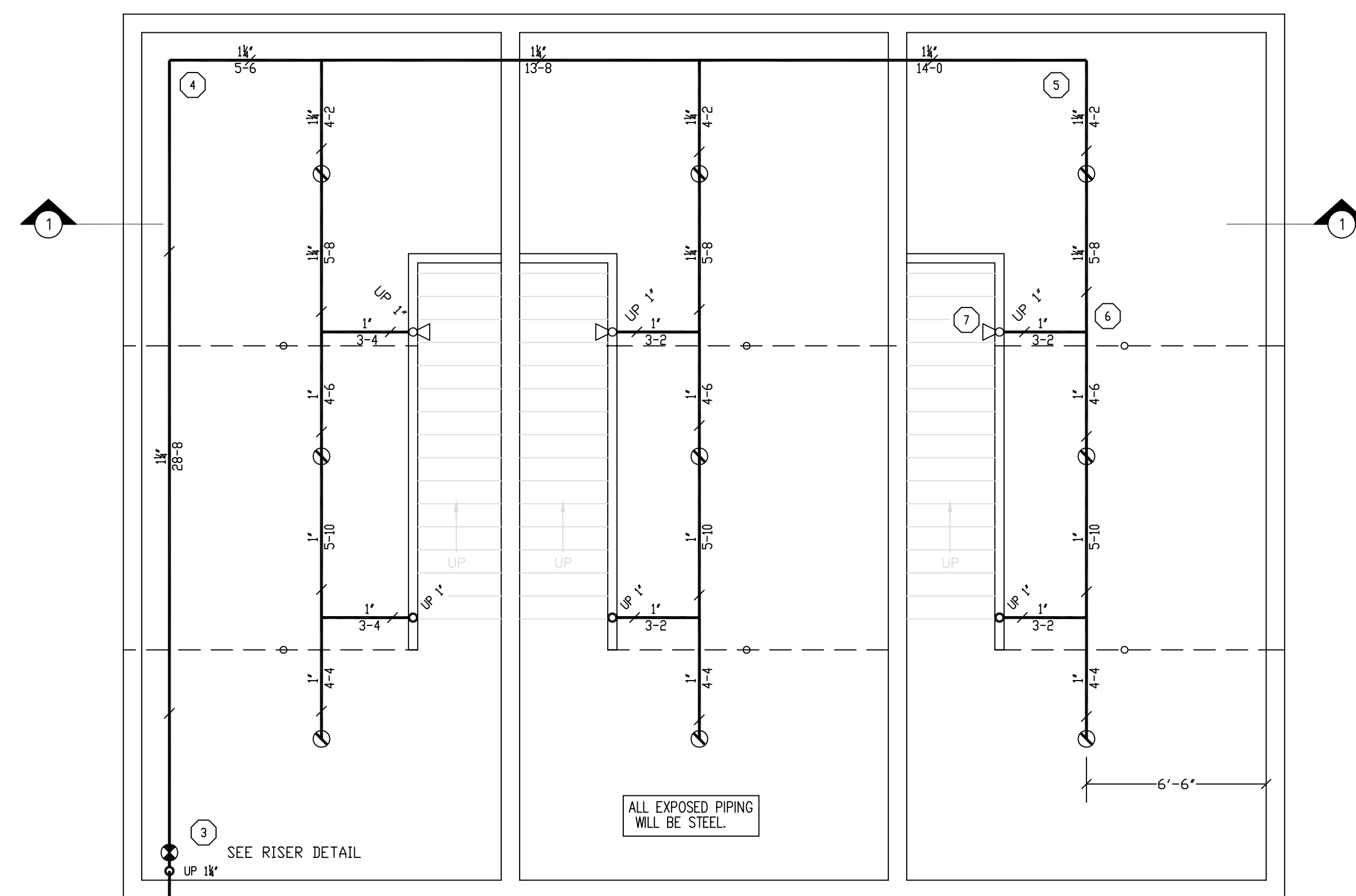


**SECOND FLOOR FIRE PROTECTION**

SCALE 1/4"=1'-0" QUANTITY <math>\triangleleft</math> = 18

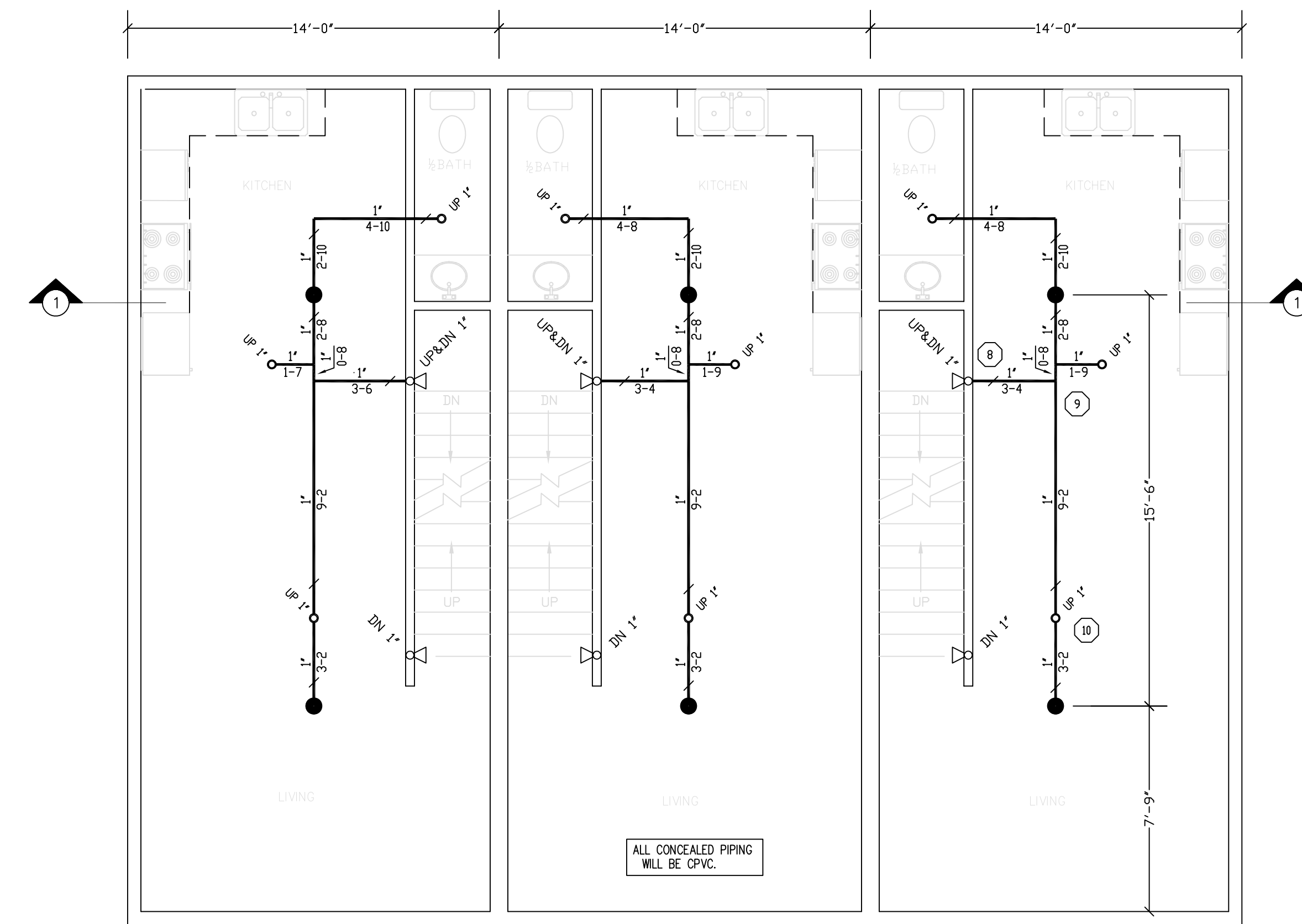
**HYDRAULIC DESIGN DATA**

System # & Area	#1 - #1 2ND FLOOR
No. of Sprinklers	2
Density	0.05 GPM
Designed Area	R00M
Hose Allowance	N/A GPM
Water Flow Rate	28 GPM
Residual Pressure at Base of Riser	64 PSI
Safety Factor at Base of Riser	7.67 PSI



**BASEMENT FIRE PROTECTION**

SCALE 1/4"=1'-0" QUANTITY <math>\circ</math> = 9  
 QUANTITY <math>\triangleleft</math> = 3



**GROUND FLOOR FIRE PROTECTION**

SCALE 1/4"=1'-0" QUANTITY <math>\bullet</math> = 6  
 QUANTITY <math>\triangleleft</math> = 6

REVISIONS	NOTES	SPRINKLER TYPE	IDENTIFICATION NO.	MFG.	ESC.	MODEL	FINISH	ORIFICE	TEMP.	SYMBOL	QUANT.
	K=4.9 PENDANT SPRINKLER COVERAGE: 16'X16'	QUICK RESP. PENDANT K= 4.9	TY2524	TYCO	CONCEALED	LFII	WHITE	1/2"	155°		6
	K=4.4 SIDEWALL SPRINKLER COVERAGE: 14'X14'	QUICK RESP. PENDANT K= 4.9	TY2234	TYCO	N/A	LFII	BRASS	1/2"	155°		9
		QUICK RESP. SIDEWALL K= 4.4	TY2334	TYCO	2 PIECE	LFII	WHITE	1/2"	155°		30
<b>TOTAL SPRINKLERS THIS DRAWING</b>											45

STANDARD SYMBOLS	STANDARD SYMBOLS
- POST INDICATOR VALVE	- ALARM CHECK VALVE
- KEY VALVE	- RISER W/ALARM VALVE
- FIRE HYDRANT	- RISER W/DRY VALVE
- FIRE DEPT. CONNECTION	- RISER W/ELEC. FLOW SWITCH
- O.S. & Y GATE VALVE	- RISER W/DELUGE VALVE
- SWING CHECK VALVE	- WATER MOTOR BELL
- NEW UNDERGROUND	- ELECTRIC BELL
- EXIST UNDERGROUND	- FLUSH FIRE DEPT. CONNECTION

INSPECTIONS
1.
2.
3.
4.
5.
RESPONSIBLE MANAGING SUPERVISOR #348
CONTRACTOR LICENSE #295

208 HICKS STREET  
 PORTLAND, MAINE 04103

FIRE PROTECTION PLAN

FREEDOM FIRE PROTECTION, INC.  
 209 QUAKER RIDGE ROAD  
 CASCO, MAINE 04015

JOB No.	M0121
DATE	5/16/13
DRAWN BY	MJN
SCALE	AS NOTED
SHEET No.	
FP-2 of 2	