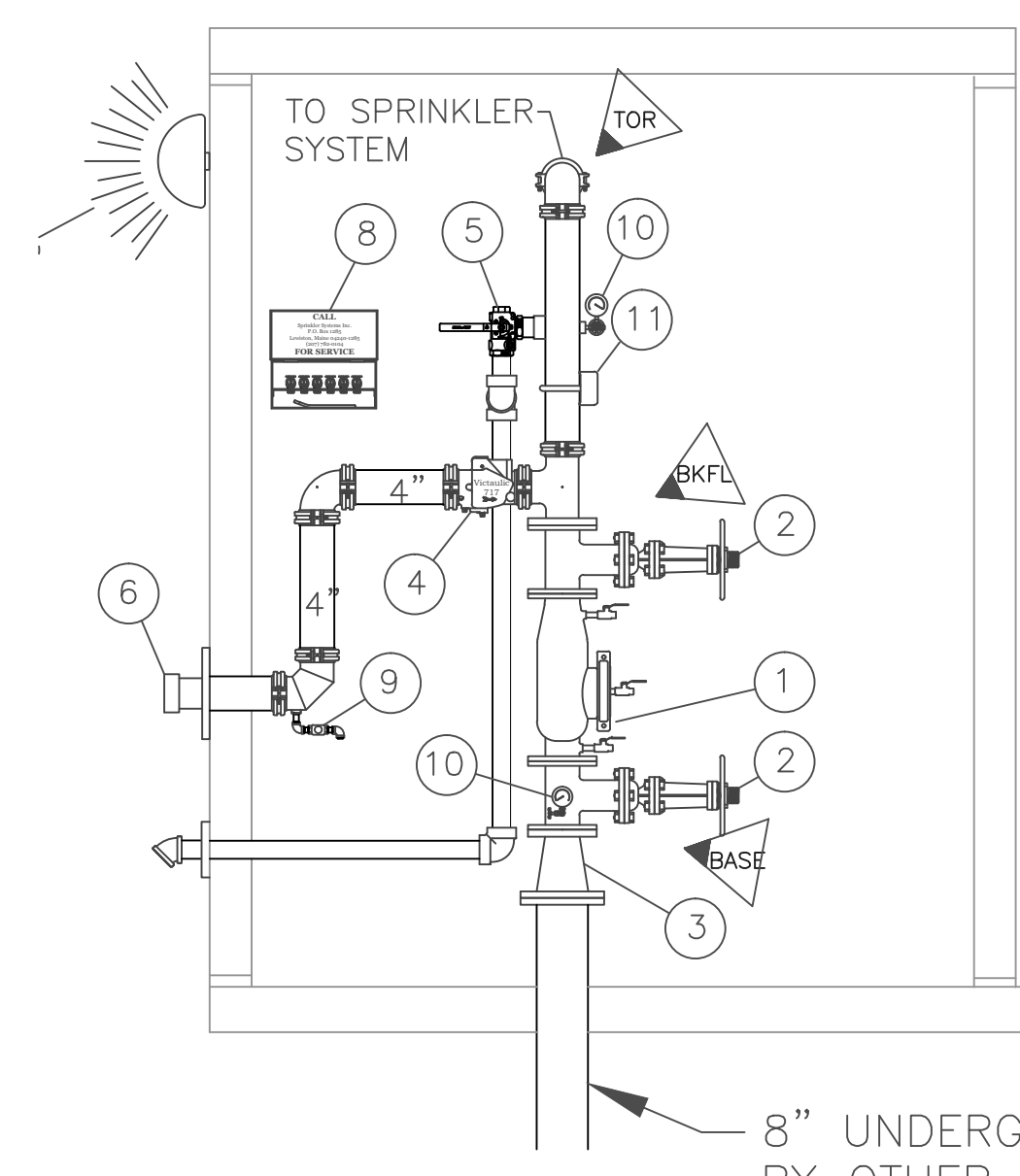


BUILDING SECTION
3/16" = 1'-0"

GENERAL NOTES:

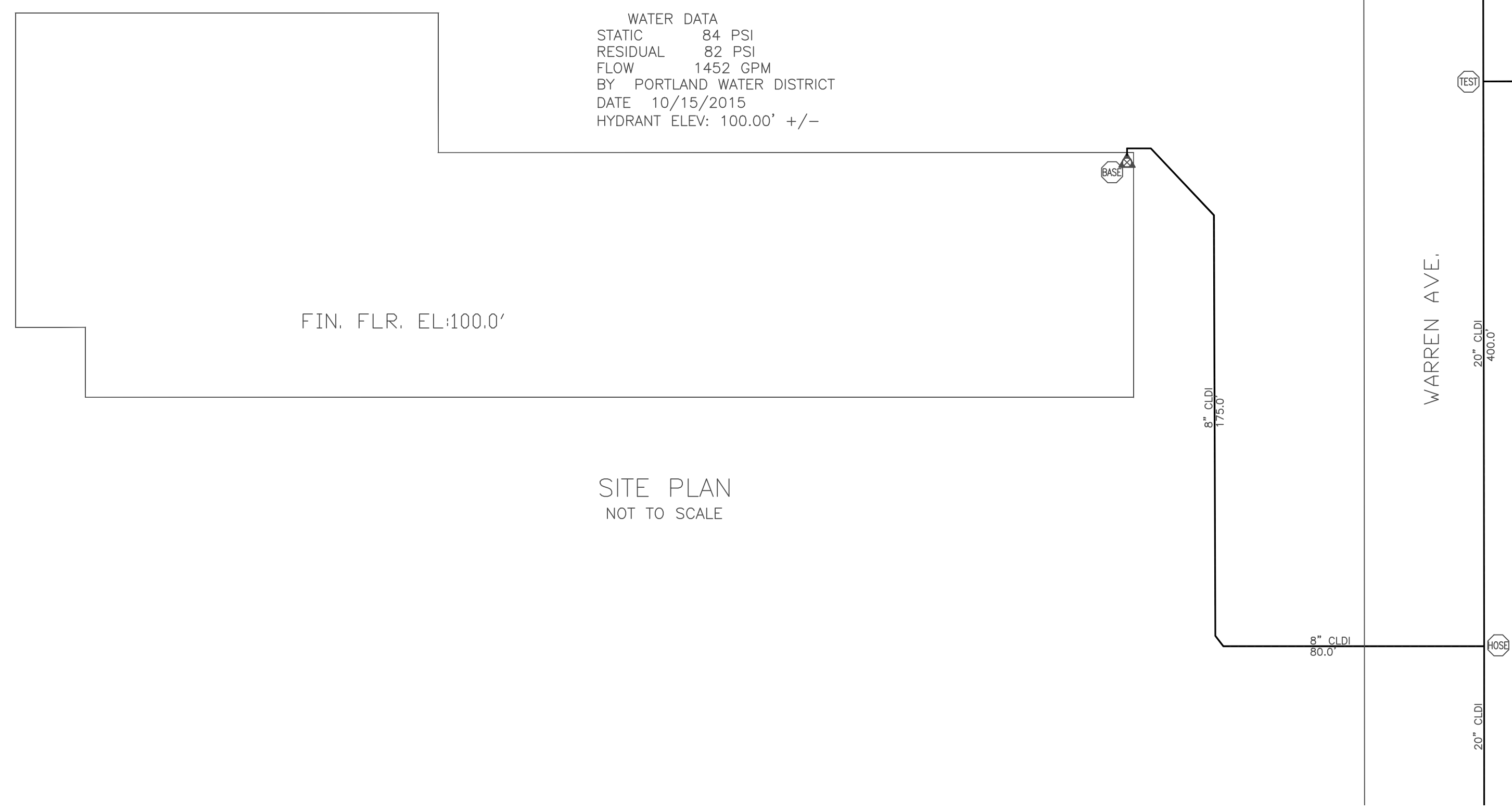
- IT IS THE BUILDING OWNERS RESPONSIBILITY TO PROVIDE ADEQUATE HEAT FOR ALL AREAS IN THE BUILDING PROTECTED BY WET SPRINKLER SYSTEMS AND FOR ALL WATER FILLED SUPPLY PIPES, VALVES AND SYSTEM RISERS IN ALL DRY PIPE SPRINKLER SYSTEMS.
- ALL NEW PIPING IS TO BE HYDROSTATICALLY TESTED AT NOT LESS THAN 200 PSI FOR 2 HOURS, OR AT 50 PSI IN EXCESS OF THE MAXIMUM PRESSURE, WHEN THE MAXIMUM PRESSURE TO BE MAINTAINED IS IN EXCESS OF 150 PSI. (PER NFPA 13)
- WHETHER OR NOT INDICATED ON DRAWINGS, THE FOLLOWING ITEMS ARE TO BE PROVIDED:
 - . SPARE HEAD CABINET WITH WRENCH (NFPA 13).
 - . PROVISIONS FOR FLUSHING CONNECTIONS AND DRAINING OF ALL PIPE.
 - . INSPECTOR'S TEST CONNECTION SHALL BE PROVIDED FOR EACH SYSTEM
 - A) FOR WET PIPE SYSTEMS SEE NFPA 13)
 - B) FOR DRY PIPE SYSTEMS SEE NFPA 13)
 - . AIR PRESSURE SHALL BE MAINTAINED ON ALL DRY PIPE SYSTEMS BY AN APPROVED AUTOMATIC AIR COMPRESSOR OR PLANT AIR SYSTEM SPECIFICALLY APPROVED FOR AND CAPABLE OF AUTOMATICALLY MAINTAINING THE REQUIRED AIR PRESSURE.
 - . WET PIPE SYSTEMS SHALL BE PROVIDED WITH A RELIEF VALVE NOT LESS THAN 1/2" IN SIZE. (NFPA 13).
- ALL PIPE 1" SHALL BE SCHEDULE 40 STEEL WITH MALLEABLE IRON FITTINGS.
- ALL PIPE 1 1/2" AND LARGER, SHALL BE SCHEDULE 10 STEEL, WITH GROOVED COUPLINGS AND VICTAULIC MECHANICAL FITTINGS OR EQUIVALENT.
- ALL MECHANICAL TRADES ARE TO COORDINATE THEIR WORK WITH SPRINKLER WORK AS SHOWN ON THESE PLANS.
- ALL HANGERS AND LOCATIONS ARE TO BE IN ACCORDANCE WITH N.F.P.A. 13.
- ALL SPRINKLER HEADS LOCATED IN SUSPENDED CEILING TILES ARE TO BE LOCATED IN AN AESTHETIC PLEASING PATTERN NO CLOSER THAN 3" TO ANY CEILING T-BAR.
- ALL PIPING IS TO BE PITCHED IN ACCORDANCE WITH N.F.P.A. 13.
- HYDRAULIC DATA REFERENCE POINTS: (25) 20' G.D.R. BELOW DECK (12')
- CENTER LINE OF PIPE ABOVE FINISH FLOOR (12'-0") BELOW DECK (12')
- PROTECTIVE CAPS ARE TO REMAIN ON THE SPRINKLER HEADS UNTIL AFTER CEILINGS ARE INSTALLED.
- WORK IS LIMITED TO REMOVING THE EXISTING MAIN AND LINES AND INSTALLING A NEW WET SPRINKLER SYSTEM IN ACCORDANCE WITH NFPA -13.
- CONTRACTOR, SUB-CONTRACTOR, OWNER AND TENANT MUTUALLY UNDERSTAND THAT THE ESFR SYSTEMS TAKE PRECEDENCE OVER MECHANICAL AND ELECTRICAL SYSTEMS DUE TO RESTRICTIVE OBSTRUCTION REQUIREMENTS. COORDINATION IS REQUIRED WITH ALL TRADES IN ALL ESFR PROTECTED AREAS.



- (11) 6" FLOW SWITCH
- (10) 3/4" THREE WAY VALVE WITH PRESSURE GAUGE
- (9) 1/2" BALL DRIP VALVE
- (8) SPARE HEAD AND WRENCH BOX
- (7) ELECTRIC ALARM BELL POTTER
- (6) 4" STORZ FIRE DEPARTMENT CONNECTION
- (5) 2" TEST AND DRAIN VALVE WITH 1/2" ORIFICE AND F
- (4) 4" SWING CHECK VALVE VICTAULIC MODEL 717
- (3) 8"x6" CONCENTRIC REDUCER
- (2) 6" OS&Y VALVE WITH TAMPER SWITCH
- (1) 6" AMES 2000 DOUBLE CHECK BACK FLOW

RISER DETAIL & LEGEND
NOT TO SCALE

NOTE: ALL UNDERGROUND TO BE INSTALLED, TESTED AND FLUSHED BY OTHERS IN ACCORDANCE WITH NFPA 24.



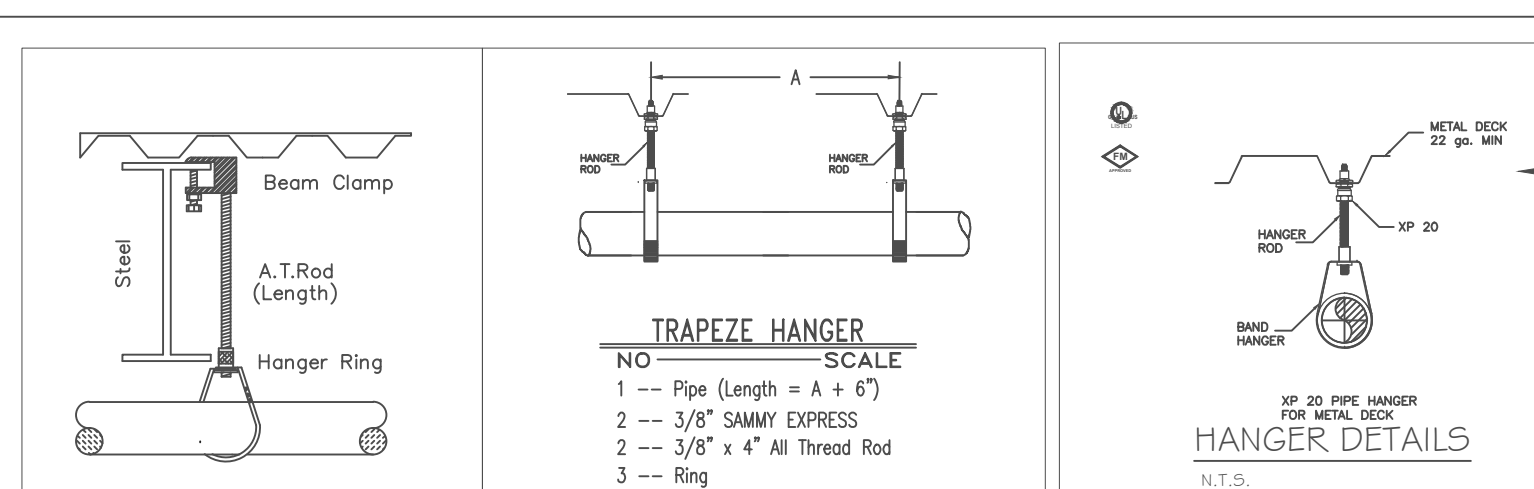
SITE PLAN
NOT TO SCALE

DESIGN IS PER N.F.P.A. 13
WINDSHIELD STORAGE
MAX STORAGE HEIGHT = 16'-0" AT HIGH SIDE, 14'-6" AT LOW SIDE.
MAX ROOF HEIGHT = 20 FEET AT HIGH SIDE
25.2 K-FACTOR ESFR SPRINKLER HEADS / WET SYSTEM
WITH A MINIMUM OPERATING PRESSURE OF 15psi.
-SPRINKLER DEFLECTORS ARE TO BE 6" TO 18" BELOW ROOF DECK. TOP OF STORAGE MUST BE A MINIMUM OF 36" BELOW SPRINKLER DEFLECTORS.



SUBMITTAL COPY

1. Type of Hazard	LIGHT/ORDINARY/STOR.	2. Deflector Distance	PER SPEC
3. Pipe Type Used	BLK SCH 10/40	4. Sprinkler Area	PER SPEC
5. Type of Construction	NON-COMBUSTIBLE		
6. Maximum Spacing Allowed	PER NFPA 13		
7. PIPE SIZING METHOD: PIPE SCHEDULE	<input type="checkbox"/>	HYDRAULICALLY CALCULATED	<input checked="" type="checkbox"/>
8. ALL HANGERS AND LOCATIONS TO BE IN ACCORDANCE WITH N.F.P.A PAMPHLET NO. 13			
9. HIGH DEGREE TEMPERATURE SPRINKLER HEADS TO BE INSTALLED IN ACCORDANCE WITH N.F.P.A PAMPHLET NO. 13			



HANGERS	
AS SHOWN IN DETAIL	

ABBREVIATIONS	
B	Bottom of Beam
D	Bottom of Deck
P	Bottom of Pipe
HV	Hoise Valve
N & C	Nipple and Cap
NIC	Not in Contract
NIS	Not to Scale
OBV	Open Bar Joints
PRV	Pressure Red Valve
RM	Roof Manifold
SP	Standpipe
TOB	Top of Beam
TOS	Top of Steel
TOP	Top of Pipe
UNL	Unless Otherwise Noted
CL	Centerline
NAG	No Automatic Sprinklers
OTB	Open to Above

CONTRACT RESPONSIBILITIES	
ITEM	FFC OTHERS
STREET CONN	
LOGD MAN	
EXCAVATION	
FLUSHING	
WIRING	
PAINTING	
TAMPER SWITCHES	
FLOW SWITCHES	
STREET CONN	

SPRINKLER HEAD LEGEND										
SYMBOL	MAKE	MODEL	SIN	FINISH	TYPE	TEMP	NPT	ORIFICE	K-FACTOR	TOTAL
○	RELIABLE	F1FR 56	RA1425	BRONZE	UPRIGHT	200° F	1/2"	1/2"	5.6	38
○	RELIABLE	N25	RA0912	BRONZE	PENDS	165° F	1"	1"	25	216
○	RELIABLE	F1FR 56	RA1414	WHITE	SR PENDS	155° F	1/2"	1/2"	5.6	29
○	TYCO	PEND VS	TY3488	WHITE	WINDOW	155° F	1/2"	1/2"	5.6	8
○	RELIABLE	F1FR56	RA1435	BRONZE	HSW	200° F	1/2"	1/2"	5.6	4
TOTAL										295

SUBMITTALS	
DATE SENT	06/24/16
DATE RECEIVED	
I S O	
F M	
L M	
I R I	
L A	
STATE FIRE	
LOCAL FIRE	
LOCAL WATER	
OWNER	

LICENSE# 093
R.M.S.# 442 PERMIT # ????
SPRINKLER SYSTEMS INC.
P.O. BOX 1285
LEWISTON MAINE
04243-1285

SAFELITE
421 WARREN AVE
PORTLAND, MAINE 04103
CONTRACT WITH **SHERIDAN CONSTRUCTION**
SYSTEM TYPE: WET DRY DELUGE PREACTION ME. LIFE HYDRO-PRO

NO.	DATE	REVISIONS	DESCRIPTION

DATE: 05/19/2016
TOTAL SPKRS ON JOB: 295
SHEET# 2 of 2
JOB# 16-059

HYDRAULIC DATA NAMEPLATE
This Building is protected by a hydraulically designed Automatic Sprinkler System

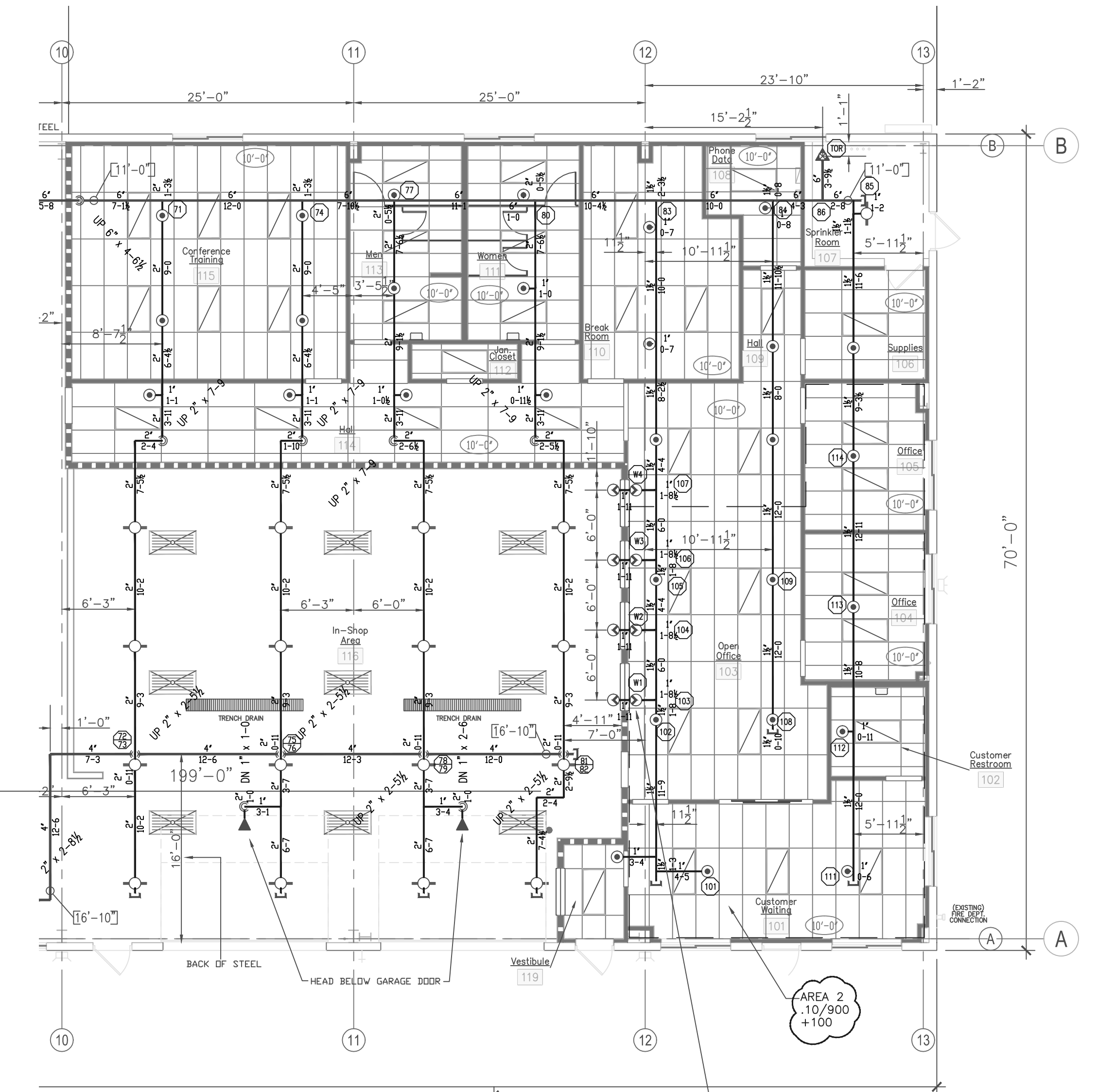
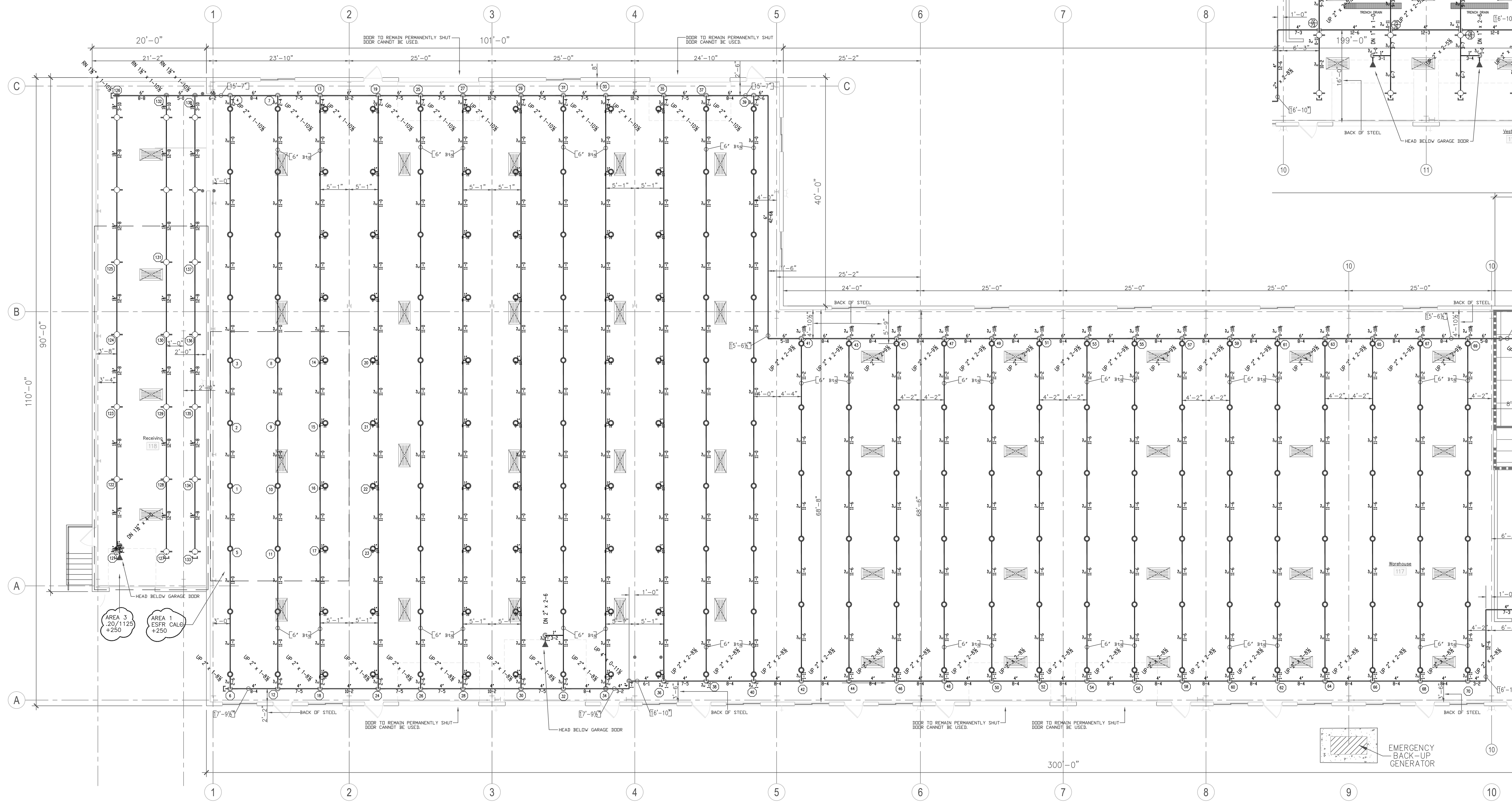
Location AREA-1
No. of Sprinkler 12
Basis of design ESFR
1. Density 1.0 gpm/ft²
2. Design area of discharge 12 HEADS/ft²
System Demand
1. Water Flow Rate
● Base/Pump 1243.93 gpm
● Residual Pressure
● Base/Pump 65.098 psi
CUSHION = 12.66 psi
MOST REMOTE AREA

HYDRAULIC DATA NAMEPLATE
This Building is protected by a hydraulically designed Automatic Sprinkler System

Location AREA-2
No. of Sprinkler 9+4
Basis of design ESFR
1. Density 1.0 gpm/ft²
2. Design area of discharge 900 sq ft
System Demand
1. Water Flow Rate
● Base/Pump 320.42 gpm
● Residual Pressure
● Base/Pump 45.787 psi
CUSHION = 37.67 psi
NOT MOST REMOTE AREA
INCLUDES 4 WINDOW HEADS

HYDRAULIC DATA NAMEPLATE
This Building is protected by a hydraulically designed Automatic Sprinkler System

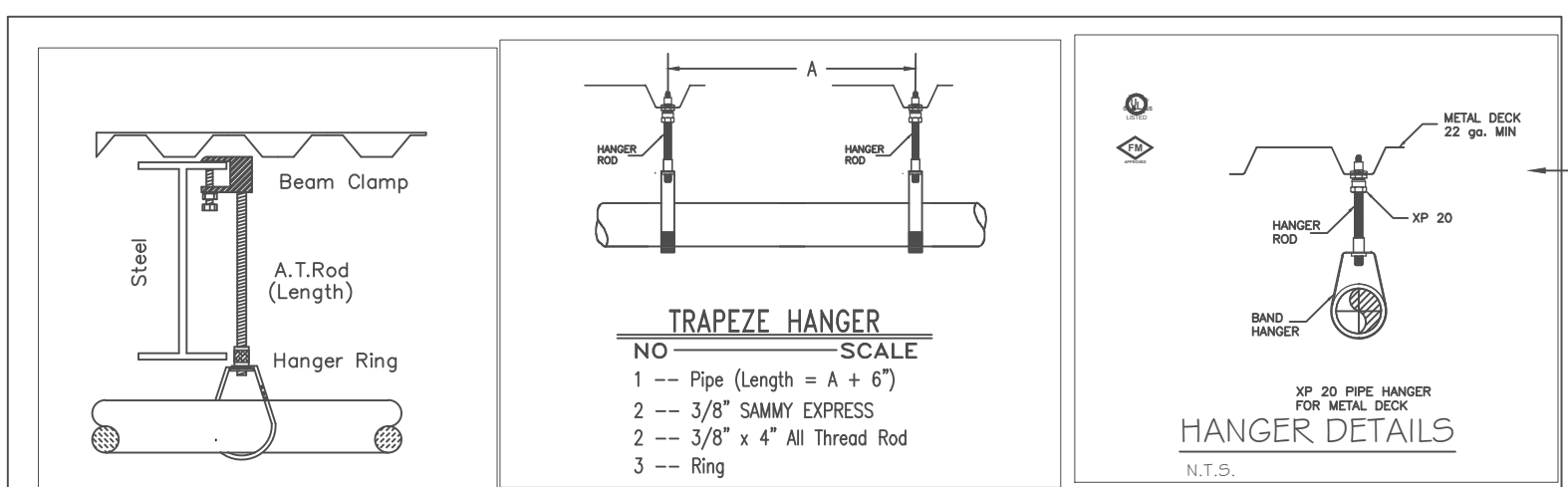
Location AREA-3
No. of Sprinkler 15
Basis of design ESFR
1. Density 1.0 gpm/ft²
2. Design area of discharge 1125 sq ft
System Demand
1. Water Flow Rate
● Base/Pump 347.94 gpm
● Residual Pressure
● Base/Pump 49.909 psi
CUSHION = 33.31 psi
NOT MOST REMOTE AREA



TYCO VS WINDOW SPRINKLERS
Pendant Vertical Sidelwall Locate
4 to 12 in. (101.6 mm to 304.8 mm)
from the face of the glass and 3 ± 1 in.
(76.2 mm ± 25.4 mm) down from
the top of exposed glass.
BAFFLES ARE REQUIRED BETWEEN HEADS
THAT ARE CLOSER THAN 6'-6" APART.

Sprinkler Location
Mullioned Glazing Assemblies Locate
window sprinklers within each mullioned
glazing segment.

- Type of Hazard LIGHT/ORDINARY/STDB; 2. Deflector Distance PER SPEC
- Pipe Type Used BLK SCH 10/40; 4. Sprinkler Area PER SPEC
- Type of Construction NON-COMBUSTIBLE
- Maximum Spacing Allowed PER NFPA 1.3
- PIPE SIZING METHOD: PIPE SCHEDULE HYDRAULICALLY CALCULATED
- ALL HANGERS AND LOCATIONS TO BE IN ACCORDANCE WITH NFPA PAMPHLET NO. 13
- HIGH DEGREE TEMPERATURE SPRINKLER HEADS TO BE INSTALLED IN ACCORDANCE WITH NFPA PAMPHLET NO. 13



HANGERS

AS SHOWN IN DETAIL

ABBREVIATIONS

B Bottom of Beam
S Bottom of Sack
P Bottom of Pipe
H Hanger Valve
N & C Nipple and Cap
NIC Not in Contact
N2S Not to Scale
OBU Open Bar Joints
PRAV Pressure Red Valve
RM Roof Manifold
SP Standpipe
TOB Top of Beam
TOP Top of Pipe
TOS Top of Steel
UNL Unless Otherwise Noted
CL Centerline
N/A No Automatic Sprinklers
OTA Open to Above

CONTRACT RESPONSIBILITIES

ITEM	FPC	OTHERS
STREET CONN		
UGS MAN		
EXCAVATION		
FLUSHING		
WIRING		
PAINING		
TAMPER SWITCHES		
FLOW SWITCHES		
STREET CONN		

SPRINKLER HEAD LEGEND

SYMBOL	MAKE	MODEL	SIN	FINISH	TYPE	TEMP	NPT	ORIFICE	K-FACTOR	TOTAL
○	RELIABLE	F1FR 56	RA1425	BRONZE	UPRIGHT	200° F	1/2"	1/2"	5.6	38
○	RELIABLE	N2S	RA0912	BRONZE	PENDS	165° F	1"	1"	25	216
○	RELIABLE	F1FR 56	RA1414	WHITE	SR PENDS	155° F	1/2"	1/2"	5.6	29
○	TYCO	PEND VS	TY348B	WHITE	WINDOW	155° F	1/2"	1/2"	5.6	8
○	RELIABLE	F1FR56	RA1435	BRONZE	HSW	200° F	1/2"	1/2"	5.6	4
TOTAL										295

SUBMITTALS

SENT TO	DATE SENT	DATE RECEIVED
I.S.O.		
F.M.		
L.M.		
I.R.I.		
L.A.		
STATE FIRE		
LOCAL FIRE		
LOCAL WATER		
OWNER		

LICENSE # 093
R.M.S.# 442

PERMIT # ???? ?

P.O. BOX 1285
LEWISTON MAINE
04243-1285

SAFELITE
421 WARREN AVE
PORTLAND, MAINE 04103

CONTRACT WITH **SHERIDAN CONSTRUCTION**

SYSTEM TYPE	NO.	DATE	DESCRIPTION
WET			
DRY			
DELUGE			
PREACTION			
ME. LIFE			
HYDRO-PRO			

REVISIONS

DATE 05/19/2016

TOTAL SPRKRS ON JOB 295

SHEET # 1 of 2

JOB# 16-059

SCALE AS NOTED

DRAWN BY CDS

CHECKED BY CDS

SUBMITTAL COPY