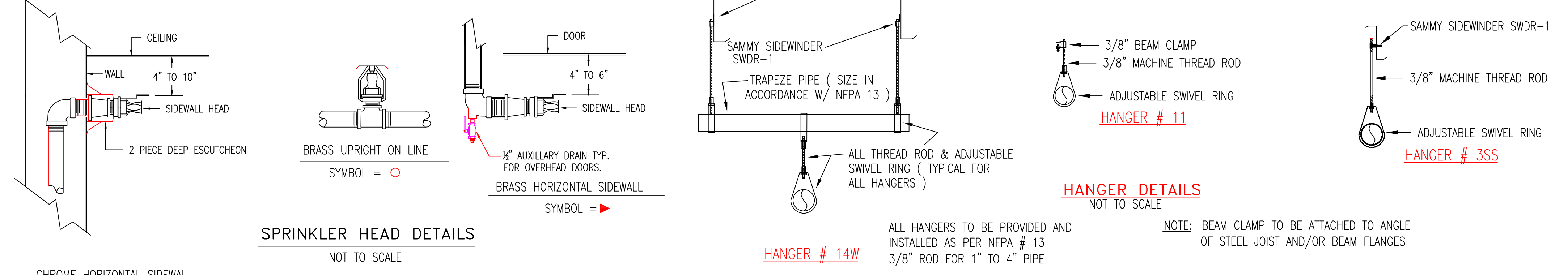


HYDRAULIC SYSTEM
 THIS BUILDING IS PROTECTED BY A HYDRAULICALLY DESIGNED AUTOMATIC SPRINKLER SYSTEM.
 LOCATION: TENANT #6
 NO. OF SPRINKLERS: 17
 BASIS OF DESIGN:
 1. DENSITY (GPM/SQ.FT.) 2
 2. DESIGNED AREA OF DISCHARGE (SQ.FT.) 2048
 SYSTEM DEMAND:
 1. WATER FLOW RATE (GPM) 214,549
 2. RESIDUAL PRESSURE AT THE BASE OF THE RISER 82.605 (PSI)

HYDRAULIC DATA NAMEPLATE
 TO BE MOUNTED AT SYSTEM RISER



GENERAL NOTES

(TENANT #6)
"HYDRAULICALLY MOST" REMOTE AREA
 (2 GPM/SQ.FT. / 1988 SQ.FT.)
 (ELEV. @ HIGHEST HEAD = 94.2')

SPRINKLER SYSTEM INSTALLATION TO COMPLY WITH NFPA PAMPHLET # 13 (2007)
 ALL DIMENSIONS ARE SHOWN FOR GENERAL LOCATION OF SPRINKLER HEADS; PIPING MAY VARY TO SUIT ACTUAL FIELD CONDITIONS.
 OCCUPANCY DESCRIPTION AND CLASSIFICATION:
 RENTAL BUILDING OH II
 SPRINKLER DESIGN CRITERIA CLASS I-M COMMODITIES PALLETIZED, BIN BOX, SHELF, AND RACK TO A MAXIMUM HEIGHT OF 10'-0" A.F.F. TABLE 13.2.1, FIGURE 13.2.1, CURVE OHII, 2 GPM / SQ. FT. / 1500 SQ. FT. 250 HOSE. INCREASED TO 1950 SQ. FT. PER NFPA #13 SEC 12.5.1
 ORDINARY HAZARD GROUP 2 OCCUPANCY MACHINE SHOP, METAL WORKING, MERCANTILE, REPAIR GARAGE, WOOD MACHINING OR SIMILAR OCCUPANCY 2 GPM / 1500 SQ. FT. 250 HOSE FIGURE 11.2.3.1.1 CURVE ORDINARY HAZARD II, INCREASED TO 1950 SQ. FT. PER NFPA #13 SEC. 11.2.3.2.5 FOR DRY SYSTEM.
 DRY SYSTEM PIPE TO BE PITCHED PER NFPA 13 SECTION 8.16.2.3.1 BRANCH LINE PIPING SHALL BE PITCHED AT LEAST 1/2" PER 10'-0" MAIN PIPING SHALL BE PITCHED AT LEAST 1/4" PER 10'-0"

○ = INDICATES HYDRAULIC REFERENCE POINTS.
 B.P. ⊕ INDICATES BOTTOM OF "Z" PURLIN TO CENTERLINE OF PIPE.
 F.F. ⊕ INDICATES FINISH FLOOR UP TO CENTERLINE OF PIPE.
 DD ⊕ INDICATES DECK DOWN TO CENTERLINE OF PIPE.
 ALL WIRING BY OTHERS

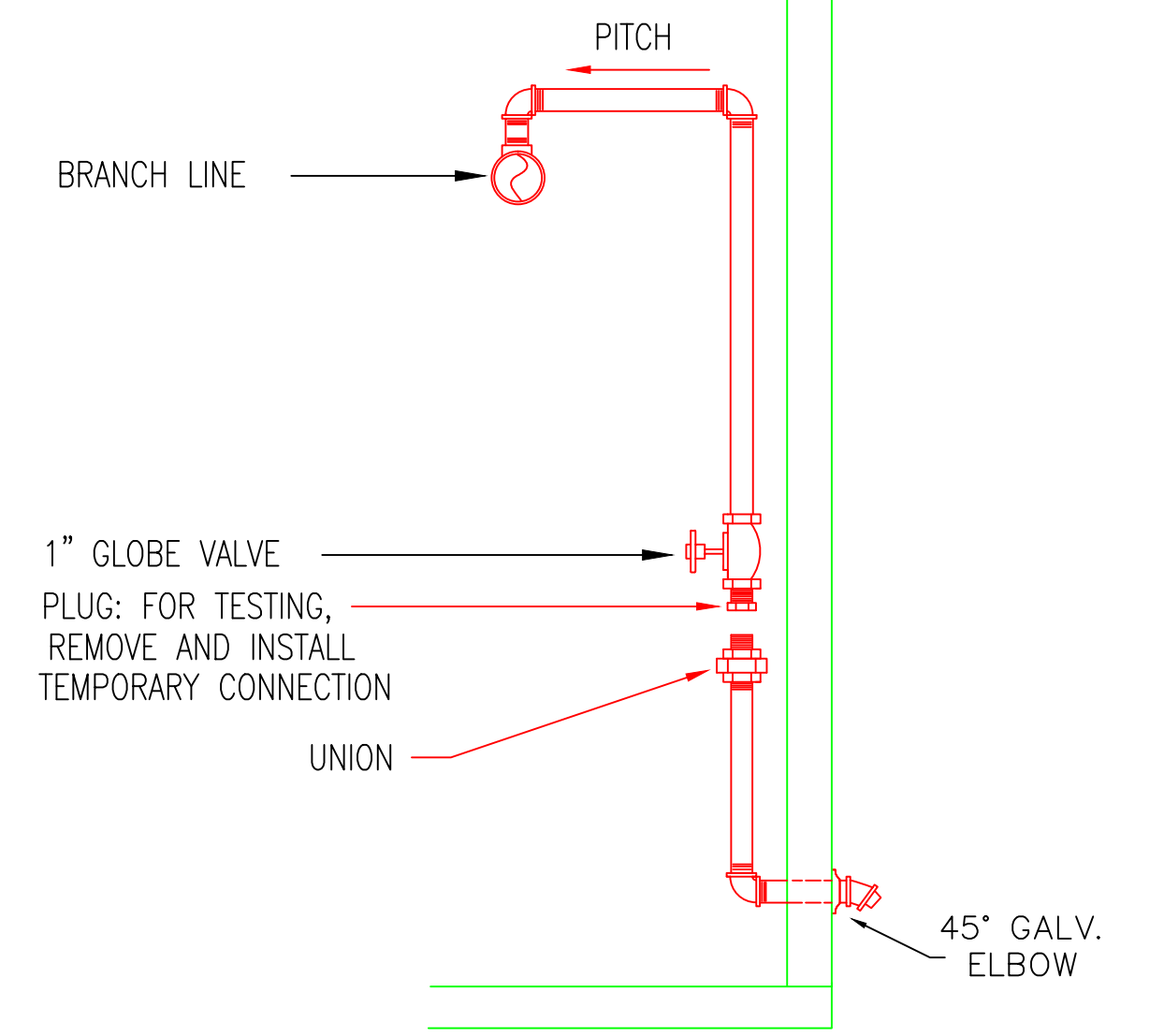
FIRE SPRINKLER PLAN - ROOF PLAN

SCALE: 1/8"=1'-0"
 AREA PROTECTED: 24500 SQ.FT.
 FINISH FLOOR ELEVATION : 75.0
 COLOR CODE: WHITE

Sprinkler Head Schedule

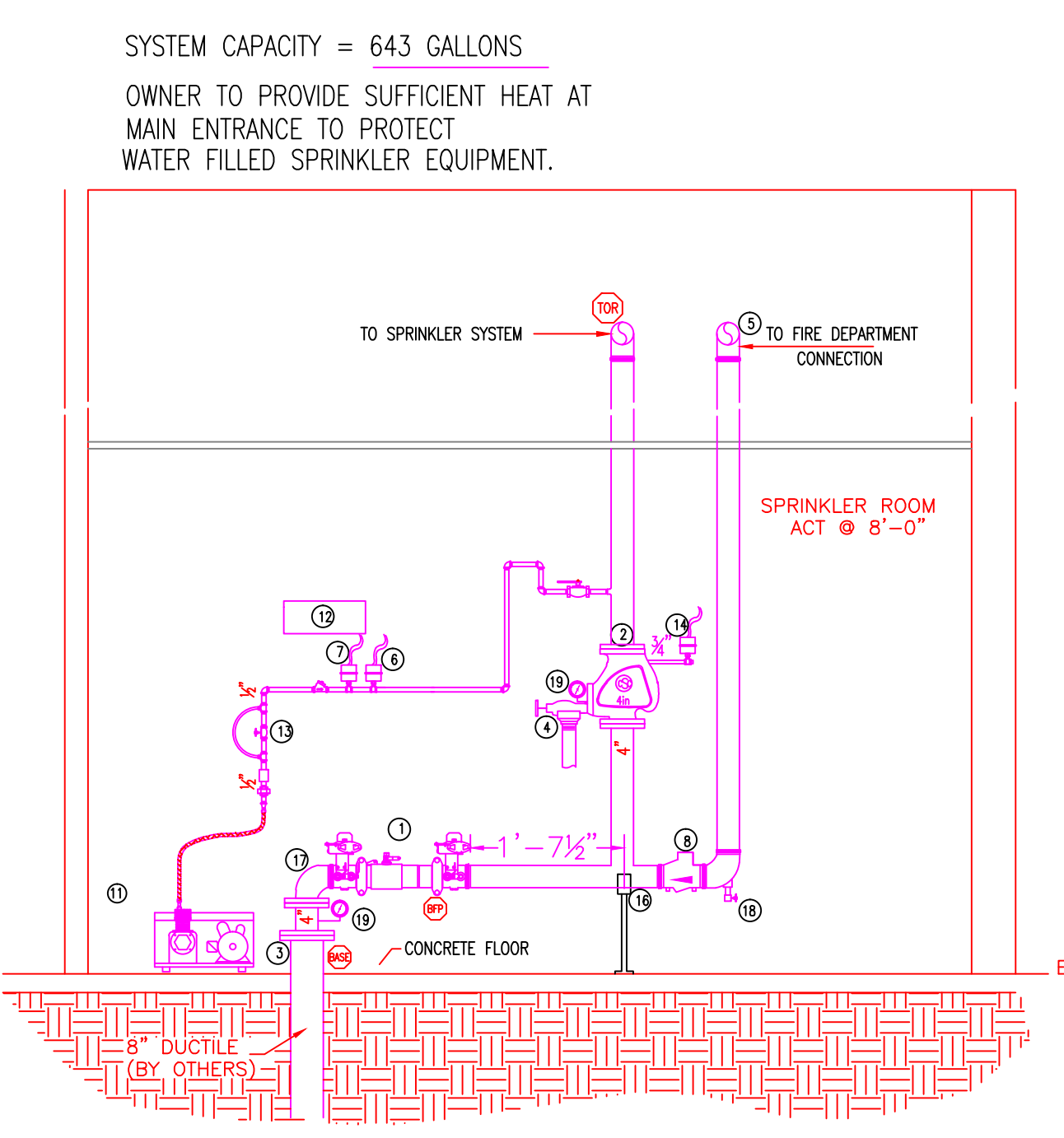
Symbol	Count	Thread	K-Factor	Description	Note
○	201	3/4"	8.0	RELIABLE F1 LO BRASS UPRIGHT SIN# RA1722 286"	ON LINE
◁	8	1/2"	5.6	RELIABLE F156 STANDARD RESPONSE BRASS HORIZONTAL SIDEWALL SIN# RA1335 200"	ON LINE
◁	1	1/2"	5.6	RELIABLE F1FR56 CHROME TWO PIECE DEEP SIDEWALL SIN# RA1435 200"	ON LINE

210 = Total Number of Heads This Floor



DRY INSPECTOR'S TEST DETAIL

NOT TO SCALE

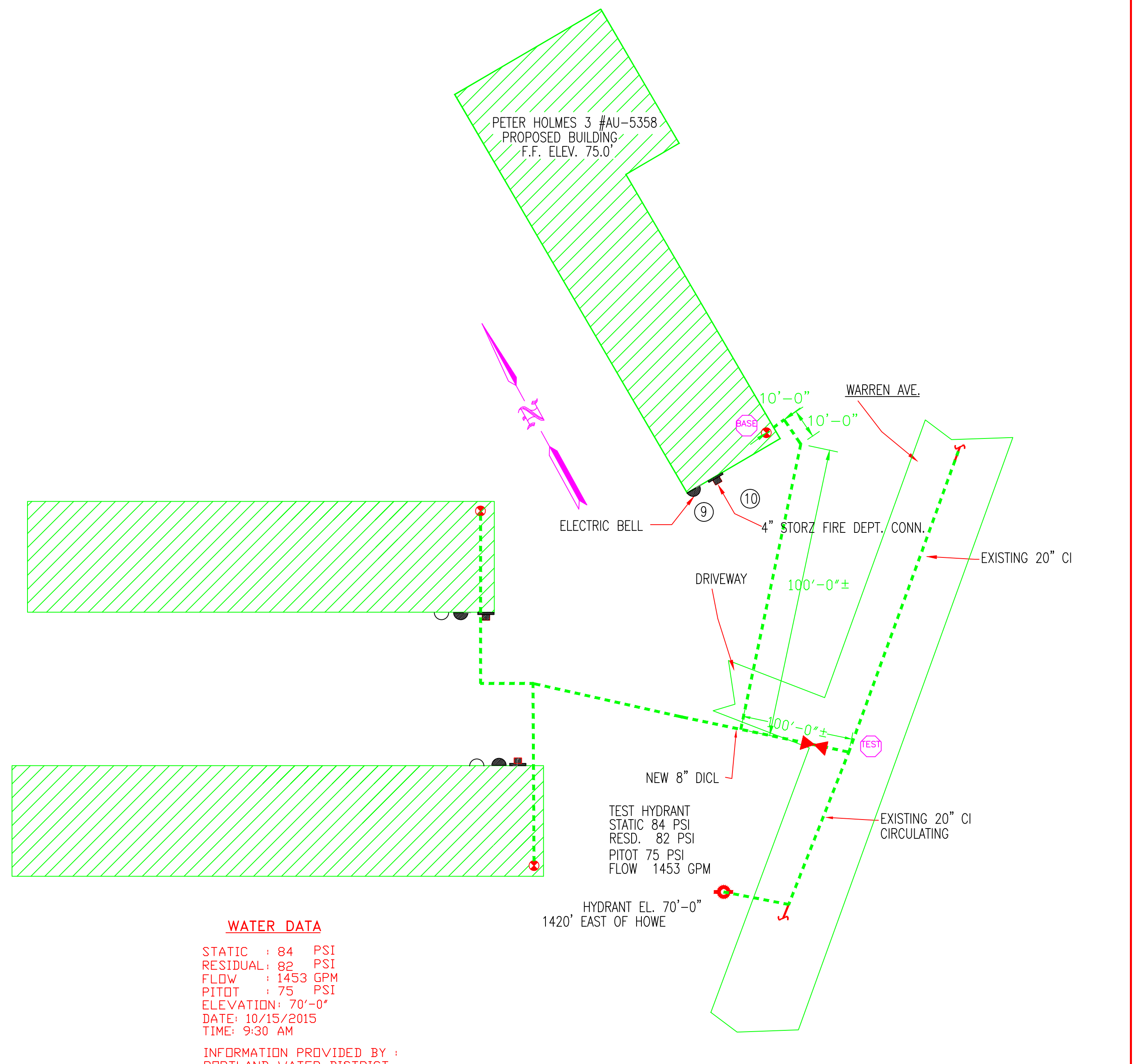
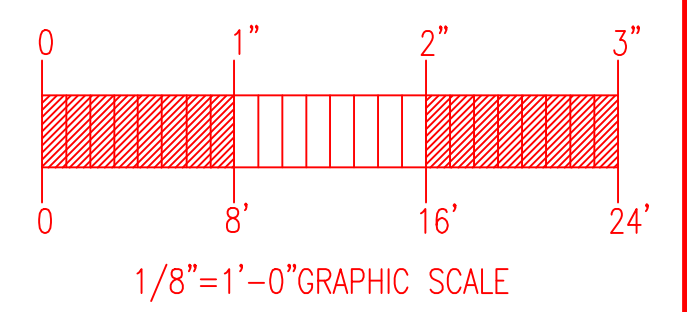


SYSTEM RISER DETAIL "B"

NOT TO SCALE

- LEGEND**
- ① 4" COLT C200 DOUBLE CHECK VALVE W/ BUTTERFLY VALVES W/ TAMPERS N.O.
 - ② 4" TYCO DRY PIPE VALVE W/ TRIM (MODEL DPV-1)(GROOVED-GROOVED)
 - ③ 8" UNI-FLANGE FOR DCL (BY OTHERS)
 - ④ 2" ANGLE VALVE (MAIN DRAIN) TO OUTSIDE DISCHARGE N.C.
 - ⑤ 4" OUT TO FIRE DEPARTMENT CONNECTION
 - ⑥ FURNAS AIR COMPRESSOR AUTOMATIC ON-OFF SWITCH (MOD.69W44B) (CUT IN 25 PSI CUT OUT 35 PSI)
 - ⑦ POTTER LOW AIR PRESSURE SWITCH (PS40-2)(SET TO 20 PSI)
 - ⑧ 4" GROOVED SWING CHECK VALVE
 - ⑨ 6" ELECTRIC BELL (MODEL PB-6-12DA) (SEE ROOF PLAN)
 - ⑩ 4"x 2 1/2"x 2 1/2" FIRE DEPT. CONN. (SEE ROOF PLAN)
 - ⑪ JENNY COMPRESSOR (MODEL K15-BS) 1HP, 115/220 VOLTS, SINGLE PHASE
 - ⑫ 6" HEAD CAPACITY STORAGE BOX W/ HEAD WRENCH
 - ⑬ DRY PIPE VALVE AIR LINE BY-PASS W/ LOAD GENIE
 - ⑭ POTTER PS-10 WATERFLOW PRESSURE SWITCH
 - ⑮ 1/2" AUTO BALL DRIP (SEE ROOF PLAN)
 - ⑯ PIPE STAND
 - ⑰ 4" GROOVED 90° ELBOW
 - ⑱ 1" AUX. DRAIN
 - ⑳ WATER PRESSURE GAGE

N.O. = NORMALLY OPEN
 N.C. = NORMALLY CLOSED

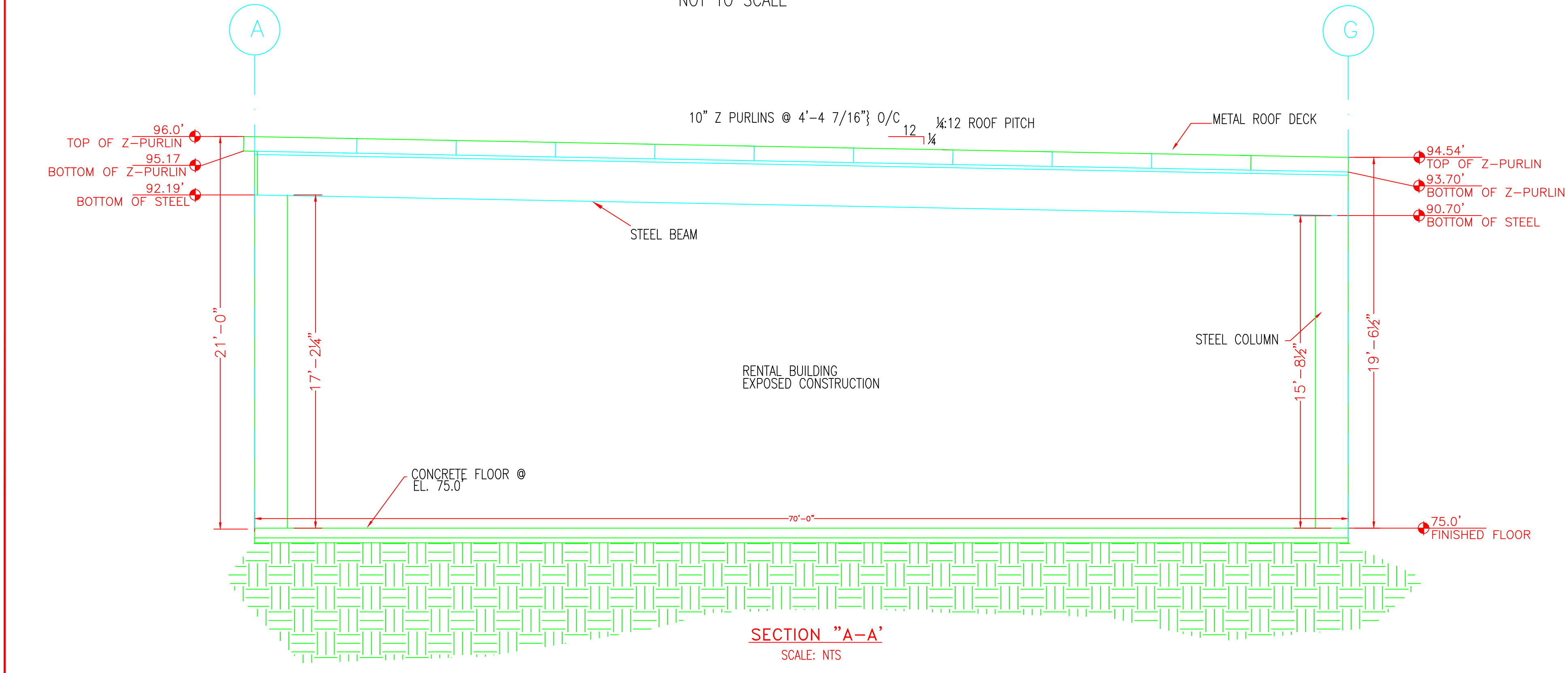


WATER DATA
 STATIC 84 PSI
 RESIDUAL 80 PSI
 FLOW 1453 GPM
 PIT(T) 75 PSI
 ELEVATION 70'-0"
 DATE: 10/15/2015
 TIME: 9:30 AM
 INFORMATION PROVIDED BY: PORTLAND WATER DISTRICT

NOTE: UNDERGROUND TO BE INSTALLED, TESTED AND FLUSHED BY OTHERS IN ACCORDANCE WITH NFPA # 24 (ALL UNDERGROUND PIPING TO BE DONE BY OTHERS).
 EASTERN FIRE PROTECTION CO. TO START @ FLANGE INSIDE BUILDINGS (INSTALLED BY OTHERS).

PLOT PLAN

SCALE: N.T.S.



SECTION "A-A"

SCALE: N.T.S.

GENERAL NOTES	DATE	REVISIONS	REQUIRED APPROVALS	FIRE SPRINKLER PLANS & DETAILS
SPRINKLER SYSTEM INSTALLATION TO COMPLY WITH NFPA PAMPHLET # 13 (2007) BRANCH LINE (1") PIPING TO BE BLACK SCHEDULE 40 JOINED BY THREADED DUCTILE IRON FITTINGS MAIN-LINE PIPING (2"-4") TO BE SCHEDULE # 10 BLACK WITH GROOVED ENDS & WELDED OUTLETS JOINED BY MECHANICAL COUPLINGS OWNER TO PROVIDE SUFFICIENT HEAT AT SPRINKLER RISER TO PREVENT FREEZING OF WATER FILLED SPRINKLER PIPING AND EQUIPMENT. (MIN 40° F.)			OWNER / ARCHITECT STATE FIRE MARSHAL PORTLAND FIRE DEPARTMENT DRAWN BY EWM NICET LEVEL # CHECKED BY WAF NICET LEVEL III CERT# 095574 CONTRACTOR LICENSE # 101 CONTRACTOR RMS # 368	PETER HOLMES III PORTLAND, MAINE CONTRACT WITH: BISKUP CONSTRUCTION EASTERN FIRE PROTECTION AUBURN LEWISTON INDUSTRIAL AIRPARK, AUBURN, MAINE 04210 JOB NUMBER AN-5358-15 SCALE AS NOTED DATE 10/31/15