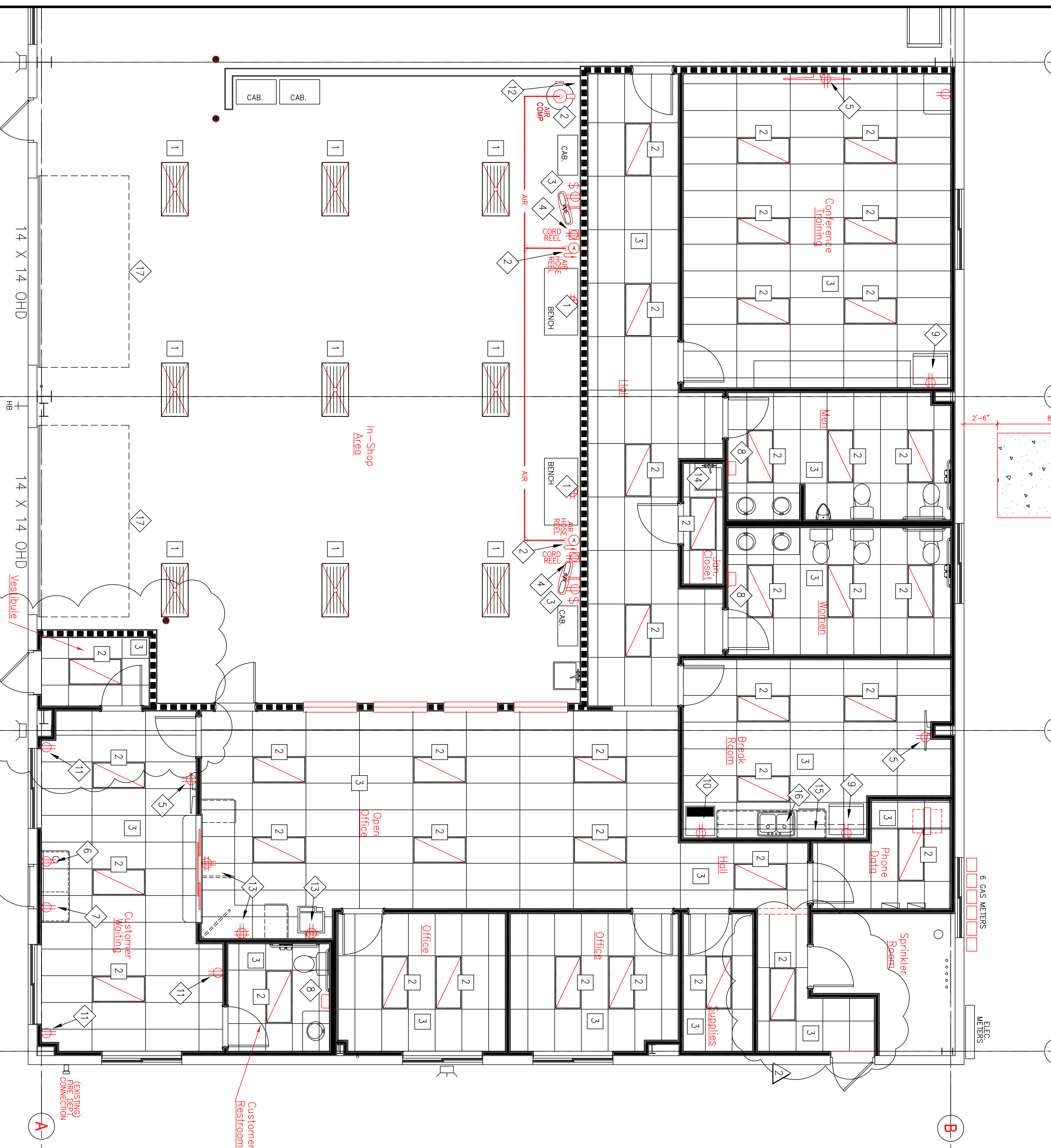


mechanical contractor.



**KEYED NOTES - LIGHTING & ELECTRICAL**

- 1 PROVIDE NEW HIGH OUTPUT 15, 65-BULB, 2' X 4' LIGHT FIXTURES TO BE CHAIN MOUNT AT 15'-0" A.F.F. LOCATIONS SHOWN.
- 2 LIGHT FIXTURES IN SUSPENDED CEILING AT LOCATIONS SHOWN.
- 3 REMOVE EXISTING SUSPENDED CEILING GRID AND PROVIDE ACQUISITION AS SHOWN. SEE MANUFACTURER'S INTERIOR FINISH NOTES, SHEET A-2.
- 4 PROVIDE ONE FOUR-FLEX ELECTRICAL OUTLET AT 44" A.F.F. FOR IN-SHOP BENCHES.
- 5 AIR COMPRESSOR AND AIR HOSE REELS SHALL BE PROVIDED BY CONTRACTOR. CONSULT SHEET CONSTRUCTION REPRESENTING FOR EXACT LOCATION. PROVIDE ONE AIR COMPRESSOR AND ONE AIR HOSE REEL WITH MANUAL DRAIN VALVE. ALSO, A FLEXIBLE HOSE REEL SHALL BE PROVIDED. AIR HOSE REELS ARE WALL MOUNTED TO BEAT GRADE. MODEL NUMBER SP603 WITH 50' HOSE.
- 6 INSTALL NEW WALL MOUNTED FAN, SWITCH AND ELECTRICAL RECEPTACLE AT LOCATIONS SHOWN.
- 7 PROVIDE NEW DUPLEX ELECTRICAL RECEPTACLE AT 44" A.F.F. OVER COFFEE CABINET WHERE SHOWN.
- 8 PROVIDE NEW DUPLEX ELECTRICAL RECEPTACLE AT 24" A.F.F. FOR CANNED BEVERAGE CENTER.
- 9 PROVIDE REQUIRED ELECTRICAL TO A HAND DRYER MOUNTED ON WALL IN BOTH RESTROOMS WHERE SHOWN. HAND DRYER IS A CHARGE DISCHARGER AS SHOWN.
- 10 PROVIDE NEW DUPLEX ELECTRICAL RECEPTACLE AT 44" A.F.F. FOR REFRIGERATOR WHERE SHOWN.
- 11 PROVIDE NEW DUPLEX ELECTRICAL RECEPTACLE AT 18" A.F.F. WHERE SHOWN.
- 12 PROVIDE NEW DUPLEX ELECTRICAL RECEPTACLE AT 44" A.F.F. FOR AIR COMPRESSOR WHERE SHOWN.
- 13 PROVIDE NEW FOR FLEXIBLE LED RECESSED CEILING LIGHTER AT LOCATIONS SHOWN.
- 14 PROVIDE NEW WATER HEATER ON SHELF ABOVE RESTROOM EXHAUST FAN.
- 15 PROVIDE REQUIRED ELECTRICAL AND SWITCH FOR DISHWASHER AS SHOWN.
- 16 PROVIDE REQUIRED ELECTRICAL AND SWITCH FOR DISPOSAL AS SHOWN.
- 17 PROVIDE OVERHEAD DOOR OPERATORS AT LOCATIONS SHOWN.

**Reflected Ceiling Plan Key**

	2' X 4' 3-BULB FLUORESCENT LIGHT FIXTURE RECESSED INTO SUSPENDED CEILING
	4' LONG SURGE MOUNT LIGHT FIXTURE WITH WAP-AROUND LENS
	6-LAMP 2x4 QUIN MOUNT 1-5 FLUORESCENT LIGHT FIXTURE
	BATHROOM EXHAUST FAN FLUSH MOUNT IN CEILING
	LED COMBO EXIT FIXTURE

**Floor Plan Key**

	EXISTING EXTERIOR TITLE WALL
	EXISTING INTERIOR WALLS TO REMAIN
	NEW METAL FRAMED PARTITION WALLS
	NEW 1-1/2" R4TD FRAME WALL FLOOR TO DECK
	EXISTING DOORS TO REMAIN
	NEW DOORS TO PROVIDE AND INSTALL

**DISCLAIMER:**  
 Drawings A-0.0, A-1-1, A-1-2, A-2.0, A-3.1, A-3.2, A-4.0, A-5.0, A-6.0, A-7.0 were drawn by Satellite AutoGlass. The original date of these drawings (Rev.) is 03/28/16. The Sheridan Corporation replaced Satellite's title with theirs and all revisions since Rev. 1 are by Sheridan's designers. All revisions/changes by Sheridan are noted in the applicable drawing(s) revision block.

DATE	REVISION	DRAWING STATUS
3/21/16	City change (Satellite)	REVISED
4/22/16	Sheridan title block & grades added	REVISED
5/3/16	DKM note added	REVISED

EST. NO.	ENGINEERING DESIGNS FOR
16-1003	Satellite Auto Glass
TYPE	421 Warren Avenue
DESIGNED BY	Portland, Maine
DRAWN BY	RAJP
REVIEWED BY	DS
SCALE	AS NOTED
DATE	04/22/2016

JOB NO.	16-1003
ENGINEERING	DWG. NO.
A-3.2	Reflected Ceiling Plan
DESIGN BUILDER	

STATE OF MAINE  
 REGISTERED PROFESSIONAL ENGINEER  
 No. 5107  
 05-13-2016

**Sheridan**  
 FAIRFIELD  
 PORTLAND  
 MAINE

Enlarged Partial Floor Plan -  
 Elec. and Reflected Ceiling Plan  
 1/4" = 1'-0"

North

14 X 14 OHD  
 14 X 14 OHD  
 14 X 14 OHD

10 11 12 13

A B