

PANEL MDP (PHONE/DATA RM) 120/208 3PH 4W 400AMP MCB 22/42K AIC NEMA TYPE 1 (SURFACE)													
CKT #	LOAD DESCRIPTION	AT	P	CA	DF	DA	CKT #	LOAD DESCRIPTION	AT	P	CA	DF	DA
1	100A ATS TO PANEL SB	100	3	65	0.71	46	2	RTU-1	60	3	43	1.00	43
3				65	0.71	46	4						
5				65	0.71	46	6						
7	FORKLIFT CHARGING STATIONS	30	3	21	0.80	17	8	FORKLIFT CHARGING STATIONS	30	3	21	0.80	17
9				21	0.80	17	10						
11				21	0.80	17	12						
13	WAREHOUSE LIGHTS-SWITCH B	20	1	12	0.80	10	14	REVEIVING LIGHT-UNIT HEATER 1	20	1	5	0.80	4
15	WAREHOUSE UNIT HEATERS 2-5	20	1	6	0.80	5	16	WAREHOUSE LIGHTS-SWITCH C	20	1	12	0.80	10
17	WAREHOUSE LIGHTS-SWITCH E	20	1	12	0.80	10	18	WAREHOUSE OVER HEAD DOORS	20	1	15	0.50	8
19	WAREHOUSE LIGHT TABLES	20	1	4	0.80	3	20	LIGHTS IN SHOP AREA	20	1	8	0.80	6
21	LIGHTS-CONFERENCE, BATHROOMS, LOUNGE	20	1	6	0.80	5	22	LIGHTS-CORRIDOR, OFFICES, CUSTOMER	20	1	8	0.80	6
23	IN SHOP GARAGE DOOR OPENERS	20	1	8	0.50	4	24	IN SHOP IRT HEATER/RECEPTACLE	20	1	6	0.50	3
25	IN SHOP AIR COMPRESSOR	20	1	10	0.50	5	26	IN SHOP BENCH CORD REELS	20	1	3	0.50	2
27	IN SHOP BENCH RECEPTACLES	20	1	3	0.50	2	28	LOUNGE DISHWASHER	20	1	10	0.50	5
29	LOUNGE DISPOSAL	20	1	8	0.50	4	30	CUSTOMER WAITING COFFEE	20	1	10	0.50	5
31	CUSTOMER WAITING RECEPTACLES	20	1	6	0.50	3	32	CUSTOMER WAITING CANNED BEVERAGE	20	1	6	0.50	3
33	CUSTOMER RESTROOM-HAND DRYER/EF-1	20	1	8	0.50	4	34	SPRINKLER/SUPPLIES/PHONE RECEPT/EF-3	20	1	5	0.50	2
35	WATER HEATER-JAN CLOSET	20	1	8	0.80	6	36	RESTROOM HAND DRYERS/EF-2	20	1	10	0.50	5
37	CONFERENCE RECEPTACLES	20	1	6	0.50	3	38	CONFERENCE RECEPTACLES	20	1	6	0.50	3
39	LOUNGE/CORRIDOR RECEPTACLES	20	1	6	0.50	3	40	CONFERENCE RECEPTACLES	20	1	6	0.50	3
41	SPARE	20	1			0	42	SPARE	20	1			0

AT - Amp Trip
P - Poles
A - Amps
CA - Connected Amperes
DF - Demand Factor (1 - .1)
DA - Demand Amperes
MLO - Main Lug Only
MCB - Main Circuit Breaker

Tot Amps/PH - Connected Load 220.57
Demand Factor 75%
Total Amps/PH - Demand 166.20
Connected KVA 79.37
Demand KVA 59.81
Min. Panel Size (Demand x 1.25) - Amps 207.75
Panel Size (Demand x 1.56) - Amperes 259.28

PANEL SB (PHONE/DATA RM) 120/208 3PH 4W 100AMP MLO 22/42K AIC NEMA TYPE 1 - CONNECTED TO GENERATOR													
CKT #	LOAD DESCRIPTION	AT	P	CA	DF	DA	CKT #	LOAD DESCRIPTION	AT	P	CA	DF	DA
1	UPS TO PANEL "B"	40	2	39	0.50	20	2	FORKLIFT CHARGING STATIONS	30	3	21	0.80	17
3						0	4						
5	WAREHOUSE LIGHTS-SWITCH A	20	1	12	0.80	10	6						
7	WAREHOUSE LIGHTS-SWITCH D	20	1	10	0.80	8	8	WAREHOUSE LIGHT TABLE	20	1	7	0.80	6
9	LIGHTS-SHOP AND OFFICE AREAS	20	1	10	0.80	8	10	LOUNGE REFRIDGERATOR	20	1	10	0.80	8
11	EMERGENCY LIGHT CIRCUIT	20	1	6	0.80	5	12	OFFICE RECEPTACLES	20	1	6	0.50	3
13	LOUNGE ICE MACHINE	20	1	6	0.80	5	14	CONFERENCE REFRIDGERATOR	20	1	10	0.80	8
15	FIRE ALARM CONTROL PANEL	20	1	5	0.80	4	16	COMPUTER FURNITURE	20	1	6	0.50	3
17	COMPUTER FURNITURE	20	1	6	0.50	3	18	SPARE	20	1			0
19	SPARE	20	1			0	20	SPARE	20	1			0
21	SPARE	20	1			0	22	SPARE	20	1			0
23	SPARE	20	1			0	24	SPARE	20	1			0

AT - Amp Trip
P - Poles
A - Amps
CA - Connected Amperes
DF - Demand Factor (1 - .1)
DA - Demand Amperes
MLO - Main Lug Only
MCB - Main Circuit Breaker

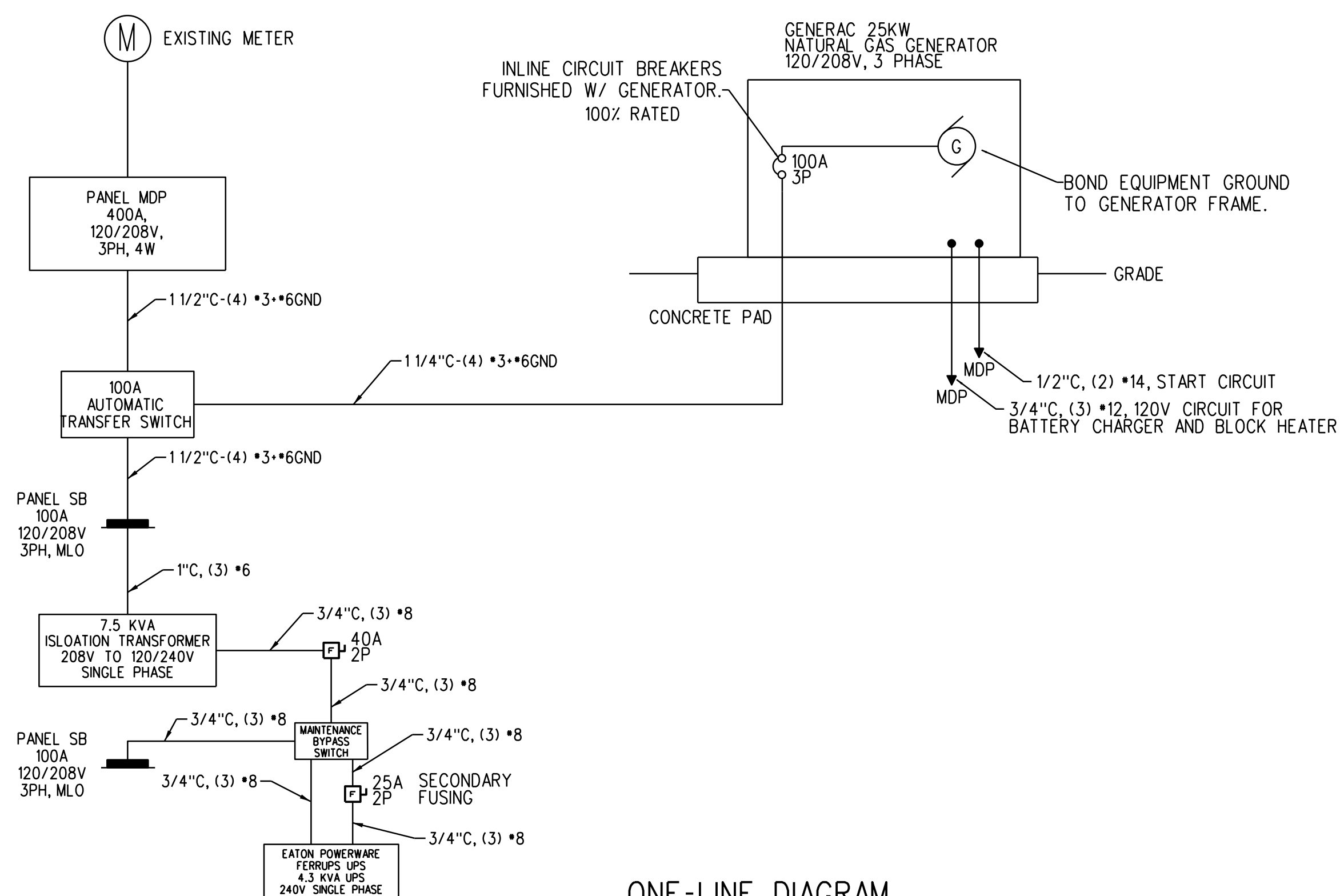
Tot Amps/PH - Connected Load 65.13
Demand Factor 71%
Total Amps/PH - Demand 46.41
Connected KVA 23.44
Demand KVA 16.70
Min. Panel Size (Demand x 1.25) - Amps 58.01
Panel Size (Demand x 1.56) - Amperes 72.39

PANEL "B" 120/240 3PH 4W 100AMP BUS - MLO 22K AIC NEMA TYPE 1-CONNECTED TO UPS													
CKT #	LOAD DESCRIPTION	AT	P	CA	DF	DA	CKT #	LOAD DESCRIPTION	AT	P	CA	DF	DA
1	PHONE BOARD WALL QUAD	20	1	3	0.50	2	2	PHONE BOARD WALL QUAD	20	1	3	0.50	2
3	PHONE BOARD WALL QUAD	20	1	3	0.50	2	4	COMPUTER FURNITURE	20	1	6	0.50	3
5	WILL CALL DESK-WAREHOUSE	20	1	6	0.50	3	6	COMPUTER FURNITURE	20	1	6	0.50	3
7	OFFICE RECEPTACLES	20	1	3	0.50	2	8	FRONT RECEPTION RECEPTACLES	20	1	3	0.50	2
9	PRINTER RECEPTACLE	20	1	3	0.50	2	10	FRONT RECEPTION RECEPTACLES	20	1	3	0.50	2
11						0	12						0
13						0	14						0
15						0	16						0
17						0	18						0

AT - Amp Trip
P - Poles
A - Amps
CA - Connected Amperes
DF - Demand Factor (1 - .1)
DA - Demand Amperes
MLO - Main Lug Only
MCB - Main Circuit Breaker

Tot Amps/PH - Connected Load 39.00
Demand Factor 50.00%
Total Amps/PH - Demand 19.50
Connected KVA 9.36
Demand KVA 4.68
Min. Panel Size (Demand x 1.25) - Amps 24.38

- NOTES:
1. PROVIDE ARC FAULT TYPE CIRCUIT BREAKERS IN ACCORDANCE WITH NEC 210.12
2. PROVIDE TAMPER RESISTANT OUTLETS PER NEC 406.11 SECTION 210.52
3. INSTALL PER ADA REQUIREMENTS IN ALL ADA UNITS.



ONE-LINE DIAGRAM
SCALE: NONE

Sheet Name PANEL SCHEDULES AND ONE LINE DIAGRAM		 BENNETT ENGINEERING MECHANICAL • ELECTRICAL (207) 865-9475		 Safelite AutoGlass 421 Warren Avenue Portland, Maine 04103	
	Revisions		Issue Date: 05-04-2016		Sheet No. E-4.1
	No.	Description	Date	File	
	△			Scale	AS NOTED
	△			Drawn By:	PMC
				Checked By:	SAJ
				Checked By:	...