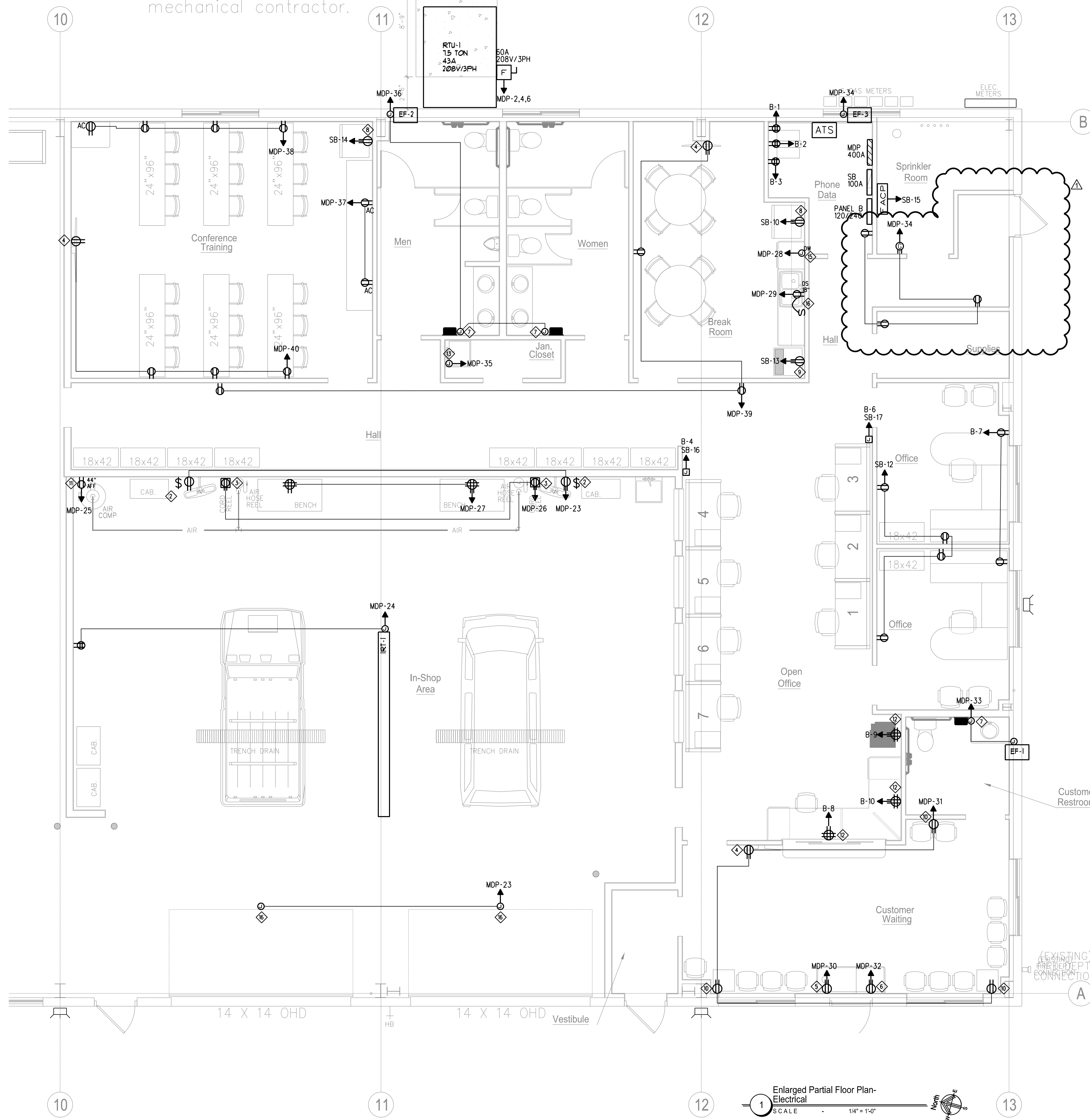
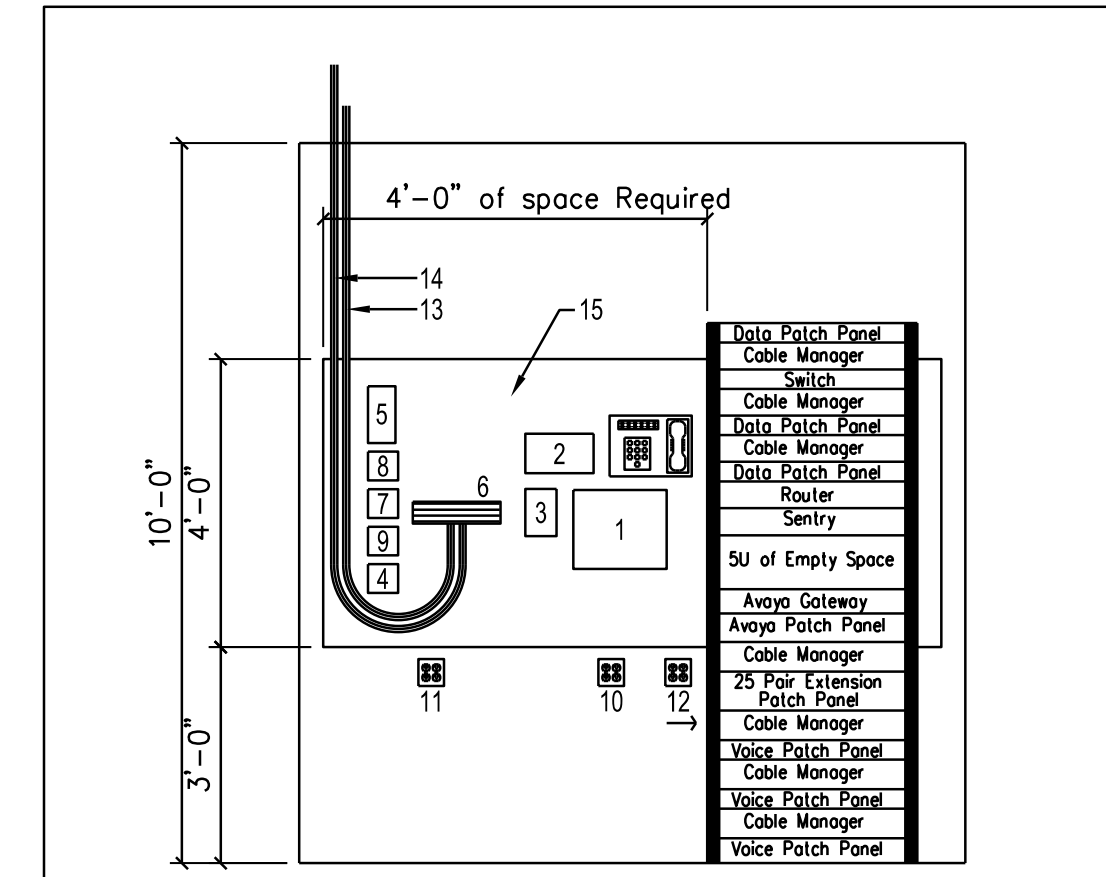


mechanical contractor.



**KEYED NOTES - ELECTRICAL**

- SEE ELECTRICAL DRAWING FOR SPECIFICATIONS AND ADDITIONAL INFORMATION. (THESE NOTES ARE SPECIFIC TO THIS SHEET ONLY)
- 1. PROVIDE ONE FOUR-PLEX ELECTRICAL OUTLETS AT 44" A.F.F. FOR IN-SHOP BENCHES.
  - 2. INSTALL NEW WALL MOUNTED FAN, SWITCH, AND ELECTRICAL RECEPTACLE AT LOCATIONS SHOWN PROVIDED BY SAFELITE. INSTALLED BY CONTRACTOR. SWITCH IS TO BE INSTALLED AT 54" A.F.F. TO CENTERLINE. FAN AND RECEPTACLE IS TO BE INSTALLED AT 120" A.F.F. FAN IS "CLD HANDLING SYSTEM" ITEM NUMBER H4CU-30-WO.
  - 3. INSTALL NEW ELECTRICAL CORD REELS WHERE SHOWN. PROVIDED BY SAFELITE. INSTALLED BY CONTRACTOR. REELS TO BE "LUMAPRO" BY BY GRANGER #4967.
  - 4. PROVIDE NEW DUPLEX ELECTRICAL RECEPTACLE AT 84" A.F.F. FOR TV WHERE SHOWN.
  - 5. PROVIDE NEW DUPLEX ELECTRICAL RECEPTACLE AT 44" A.F.F. OVER COFFEE CABINET WHERE SHOWN.
  - 6. PROVIDE NEW DUPLEX ELECTRICAL RECEPTACLE AT 24" A.F.F. FOR CANNED BEVERAGE CENTER WHERE SHOWN.
  - 7. PROVIDE REQUIRED ELECTRICAL TO A HAND DRYER MOUNTED ON WALL IN BOTH RESTROOMS WHERE SHOWN. HAND DRYER IS A CHROME XLERATOR MODEL XL-C-1 IN. AND MOUNT PER MANUFACTURERS RECOMMENDATIONS. BOTTOM OF UNIT TO BE AT 37" A.F.F.
  - 8. PROVIDE NEW DUPLEX ELECTRICAL RECEPTACLE AT 44" A.F.F. FOR REFRIGERATOR WHERE SHOWN.
  - 9. PROVIDE NEW DUPLEX ELECTRICAL RECEPTACLE AT 44" A.F.F. FOR ICE MAKER WHERE SHOWN.
  - 10. PROVIDE NEW DUPLEX ELECTRICAL RECEPTACLE AT 18" A.F.F. WHERE SHOWN.
  - 11. PROVIDE NEW DUPLEX ELECTRICAL RECEPTACLE AT 44" A.F.F. FOR AIR COMPRESSOR WHERE SHOWN.
  - 12. PROVIDE NEW FOUR-PLEX ELECTRICAL RECEPTACLE AT 18" A.F.F. FOR PRINTER AND BELOW CSR COUNTER WHERE SHOWN.
  - 13. PROVIDE NEW WATER HEATER ON SHELF ABOVE TUB SINK IN JANITOR'S CLOSET WHERE SHOWN.
  - 14. PROVIDE REQUIRED ELECTRICAL AND SWITCH FOR DISHWASHER AS SHOWN.
  - 15. PROVIDE REQUIRED ELECTRICAL AND SWITCH FOR DISPOSAL AS SHOWN.
  - 16. PROVIDE NEW ELECTRIC OVERHEAD DOOR OPERATORS AT LOCATIONS SHOWN.



- Key Notes:**
- 1. TPU 100 - BOGEN 100-WATT AMPLIFIER
  - 2. UPAM - UNIVERSAL PAGING ADAPTER
  - 3. 406127 - AVAYA ANALOG MOH ADAPTER
  - 4. JACK FOR NETWORK MODEM (POTS LINE)
  - 5. POTS LINES FOR SITE
  - 6. 100 PAIR 110 BLOCK
  - 7. NETWORK MPLS CIRCUIT (TO T1 CARD ON ROUTER)
  - 8. JACK FOR VOICE PRI (BLUE PATCH CORD) (TO T1 CARD ON PHONE SYSTEM)
  - 9. JACK FOR DATA BRI (RED PATCH CORD) (TO BRI WC ON ROUTER)
  - 10. MANDATORY 20 AMP RECEPTACLE
  - 11. OPTIONAL 20 AMP RECEPTACLE (TO NETWORK MODEM)
  - 12. MANDATORY 20 AMP RECEPTACLE BEHIND RACK
  - 13. 25 PAIR TO RACK
  - 14. 25 PAIR DEMARC EXTENSION (5' COIL ABOVE CEILING)
  - 15. 3/4" 4'X8' PLYWOOD MOUNTED TO WALL

**ELECTRICAL NOTES:**  
RECEPTACLES MUST NOT BE MOUNTED TO BOARD. MANDATORY RECEPTACLES WILL BE 2-20 AMP CIRCUITS.

2 Phone Board Wall  
SCALE NONE

1 Enlarged Partial Floor Plan - Electrical  
SCALE 1/4" = 1'-0"

Sheet Name		ENLARGED POWER PLAN		
<p><b>BENNETT ENGINEERING</b> MECHANICAL • ELECTRICAL (207) 865-9475</p>		<p><b>Safelite AutoGlass</b> 421 Warren Avenue Portland, Maine 04103</p>		
				Issue Date: 05-04-2016
	Revisions		Sheet No.	
	No.	Description	Date	<p style="font-size: 2em; font-weight: bold;">E-2.0</p>
	△	Egress Added	5-19-16	
	△			
△				
		File		
		Scale	AS NOTED	
		Drawn By:	PMC	
		Checked By:	SAJ	
		Checked By:	...	