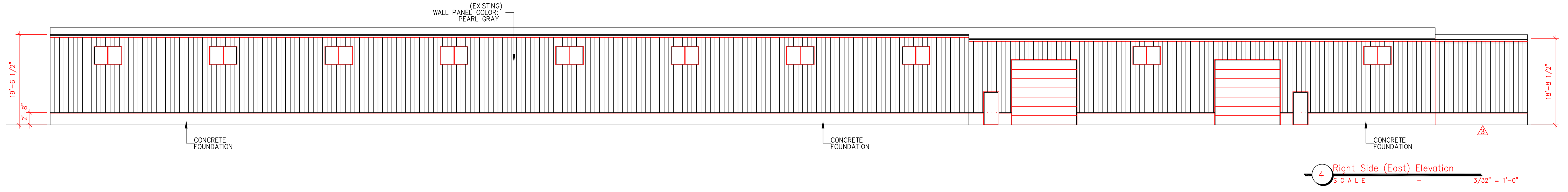
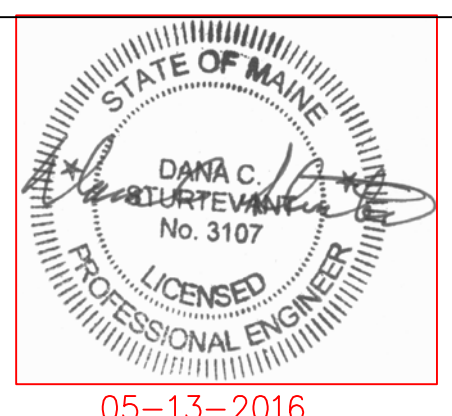


No Work to the Exterior Elevations is Proposed as part of this Building Permit



DISCLAIMER:
 Drawings A-0.0, A-1-1, A-1.2, A-2.0, A-3.1, A-3.2, A-4.0, A-5.0, A-6.0, A-7.0 were drawn by Safelite AutoGlass. The original date of these drawings (Rev.) is 03/28/16. The Sheridan Corporation replaced Safelite's title with theirs and all revisions since Rev. 1 are by Sheridan's designers. All revisions/changes by Sheridan are noted in the applicable drawing(s) revision block.

DATE	REVISION	DRAWING STATUS		ENGINEERING DESIGNS FOR	JOB NO.
3/21/16	City change	EST. NO.	ENGINEERING DESIGNS FOR	16-1003	
4/22/16	Sheridan title block added	SIZE	Safelite Auto Glass	ENGINEERING DWG. NO.	
5/5/16	Note added & rear door removed	TYPE	421 Warren Avenue	A-5	
		DRAWN BY RAJP	Portland, Maine		
		REVIEWED BY DS	EXTERIOR ELEVATIONS		
		SCALE AS NOTED	DESIGN BUILDER		
		DATE 04/22/2016			



05-13-2016