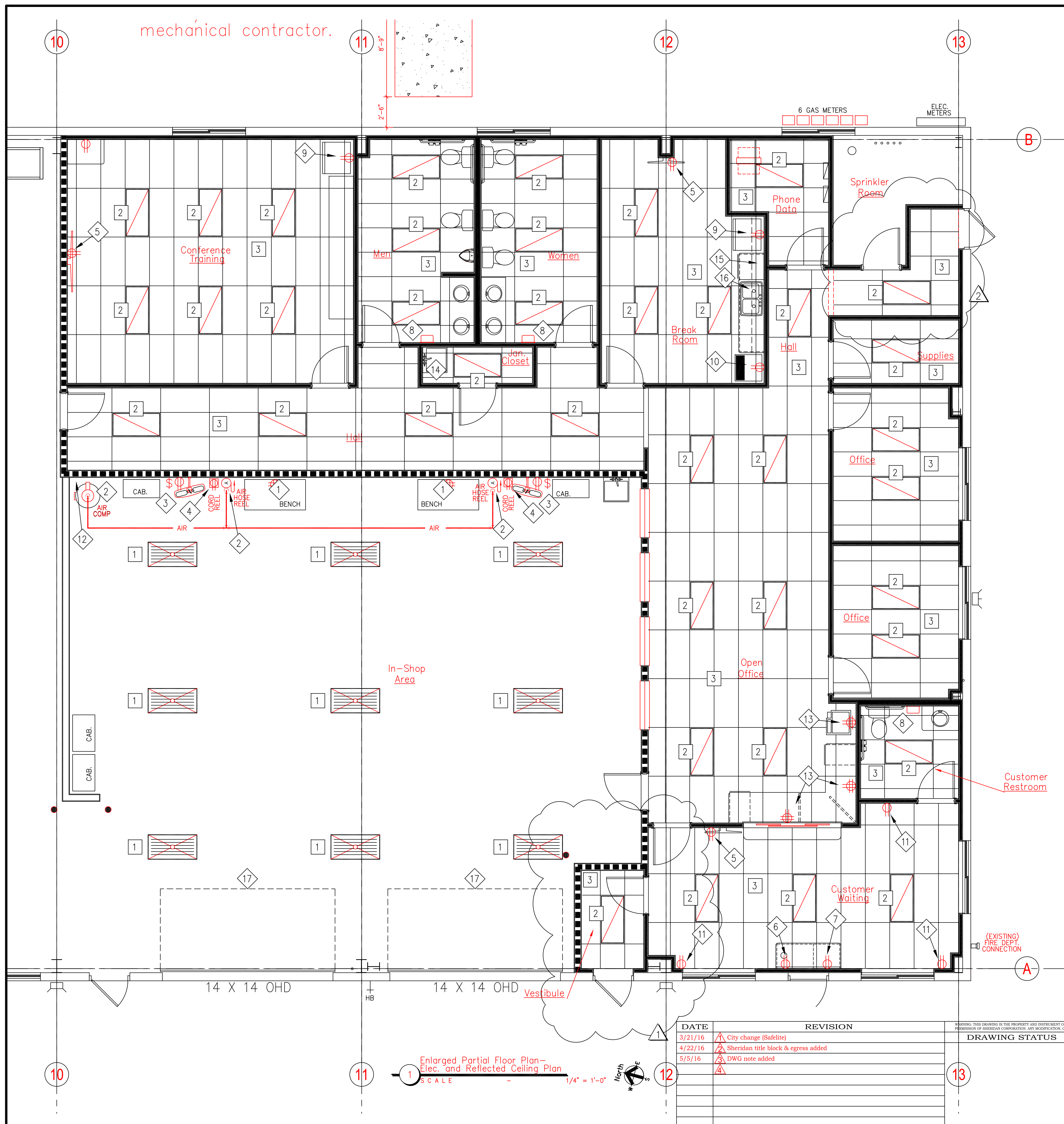


mechanical contractor.



**KEYED NOTES - LIGHTING & ELECTRICAL**

- SEE ELECTRICAL LIGHTING DRAWING, FOR SPECIFICATIONS AND ADDITIONAL INFORMATION. (THESE NOTES ARE SPECIFIC TO THIS SHEET ONLY)
- 1 PROVIDE NEW HIGH OUTPUT T5, 6-BULB, 2' X 4', LIGHTING AS SHOWN IN THE IN-SHOP AREA. THESE LIGHT FIXTURES TO BE CHAIN MOUNT AT 15'-0" A.F.F.
  - 2 PROVIDE LAY-IN, 3-BULB, 2'x4' FLUORESCENT LIGHT FIXTURES IN SUSPENDED CEILING AT LOCATIONS SHOWN.
  - 3 PROVIDE ACOUSTIC SUSPENDED CEILING GRID AND TILES IN ROOMS AS SHOWN. SEE "WAREHOUSE INTERIOR FINISH NOTES", SHEET A-2.

**KEYED NOTES - ELECTRICAL**

- SEE ELECTRICAL DRAWING, FOR SPECIFICATIONS AND ADDITIONAL INFORMATION. (THESE NOTES ARE SPECIFIC TO THIS SHEET ONLY)
- 1 PROVIDE ONE FOUR-PLEX ELECTRICAL OUTLETS AT 44" A.F.F. FOR IN-SHOP BENCHES.
  - 2 AIR COMPRESSOR AND AIR HOSE REELS SHALL BE PROVIDED BY SAFELITE AND INSTALLED BY CONTRACTOR. CONSULT SAFELITE CONSTRUCTION REPRESENTATIVE FOR EXACT LOCATION. COMPRESSOR TO BE "SPREADER" MODEL NUMBER 4TW29, 115/60, 2 HP, VERTICAL FLOOR MOUNTED WITH MANUAL DRAIN VALVE. ALSO, A FLEXIBLE HOSE WITH UNION CONNECTION POINT SHALL BE PROVIDED. AIR HOSE REELS ARE WALL MOUNT "REELCRAFT" MODEL NUMBER SP603 WITH 50 FOOT SPRING RETURN.
  - 3 INSTALL NEW WALL MOUNTED FAN, SWITCH, AND ELECTRICAL RECEPTACLE AT LOCATIONS SHOWN PROVIDED BY SAFELITE, INSTALLED BY CONTRACTOR. SWITCH IS TO BE INSTALLED AT 54" A.F.F. TO CENTERLINE. FAN AND RECEPTACLE IS TO BE INSTALLED AT 120" A.F.F. FAN IS "CLD HANDLING SYSTEM" ITEM NUMBER HA03-30-WO.
  - 4 INSTALL NEW ELECTRICAL CORD REELS WHERE SHOWN, PROVIDED BY SAFELITE, INSTALLED BY CONTRACTOR. REELS TO BE "LUMAPRO" BY "GRANGER #49967".
  - 5 PROVIDE NEW DUPLEX ELECTRICAL RECEPTACLE AT 84" A.F.F. FOR TV WHERE SHOWN.
  - 6 PROVIDE NEW DUPLEX ELECTRICAL RECEPTACLE AT 44" A.F.F. OVER COFFEE CABINET WHERE SHOWN.
  - 7 PROVIDE NEW DUPLEX ELECTRICAL RECEPTACLE AT 24" A.F.F. FOR CANNED BEVERAGE CENTER WHERE SHOWN.
  - 8 PROVIDE REQUIRED ELECTRICAL TO A HAND DRYER MOUNTED ON WALL IN BOTH RESTROOMS WHERE SHOWN. HAND DRYER IS A CHROME XLERATOR MODEL XL-C-11N. AND MOUNT PER MANUFACTURERS RECOMMENDATIONS. BOTTOM OF UNIT TO BE AT 37" A.F.F.
  - 9 PROVIDE NEW DUPLEX ELECTRICAL RECEPTACLE AT 44" A.F.F. FOR REFRIGERATOR WHERE SHOWN.
  - 10 PROVIDE NEW DUPLEX ELECTRICAL RECEPTACLE AT 44" A.F.F. FOR ICE MAKER WHERE SHOWN.
  - 11 PROVIDE NEW DUPLEX ELECTRICAL RECEPTACLE AT 18" A.F.F. WHERE SHOWN.
  - 12 PROVIDE NEW DUPLEX ELECTRICAL RECEPTACLE AT 44" A.F.F. FOR AIR COMPRESSOR WHERE SHOWN.
  - 13 PROVIDE NEW FOUR-PLEX ELECTRICAL RECEPTACLE AT 18" A.F.F. FOR PRINTER AND BELOW CSR COUNTER WHERE SHOWN.
  - 14 PROVIDE NEW WATER HEATER ON SHELF ABOVE TUB SINK IN JANITOR'S CLOSET WHERE SHOWN.
  - 15 PROVIDE REQUIRED ELECTRICAL AND SWITCH FOR DISHWASHER AS SHOWN.
  - 16 PROVIDE REQUIRED ELECTRICAL AND SWITCH FOR DISPOSAL AS SHOWN.
  - 17 PROVIDE NEW ELECTRIC OVERHEAD DOOR OPERATORS AT LOCATIONS SHOWN.

Reflected Ceiling Plan Key	
	2' x 4' 3-BULB FLUORESCENT LIGHT FIXTURE RECESSED INTO SUSPENDED CEILING.
	4' LONG, SURFACE-MOUNT 2-LAMP FLUORESCENT LIGHT FIXTURE WITH WRAP-AROUND LENSE
	6-LAMP, 2x4 CHAIN MOUNT, 1-5 FLUORESCENT LIGHT FIXTURE.
	BATHROOM EXHAUST FAN FLUSH MOUNT IN CEILING
	LED COMBO EXIT FIXTURE

Floor Plan Key	
	EXISTING EXTERIOR TILT-WALL
	EXISTING INTERIOR WALLS TO REMAIN
	NEW METAL FRAMED PARTITION WALLS
	NEW 1-HR. RATED FRAME WALL FLOOR TO DECK
	EXISTING DOORS TO REMAIN
	NEW DOORS TO PROVIDE AND INSTALL

**DISCLAIMER:**  
 Drawings A-0.0, A-1-1, A-1.2, A-2.0, A-3.1, A-3.2, A-4.0, A-5.0, A-6.0, A-7.0 were drawn by Safelite AutoGlass. The original date of these drawings (Rev.) is 03/28/16. The Sheridan Corporation replaced Safelite's title with theirs and all revisions since Rev. 1 are by Sheridan's designers. All revisions/changes by Sheridan are noted in the applicable drawing(s) revision block.

DATE	REVISION
3/21/16	City change (Safelite)
4/22/16	Sheridan title block & egress added
5/5/16	DWG note added

DRAWING STATUS		ENGINEERING DESIGNS FOR		JOB NO.	
EST. NO.		Safelite Auto Glass		16-1003	
SIZE		421 Warren Avenue		ENGINEERING	
TYPE		Portland, Maine		DWG. NO.	
DRAWN BY	RAJ/P	Reflected Ceiling Plan		A-3.2	
REVIEWED BY	DS				
SCALE	AS NOTED				
DATE	04/22/2016				
		DESIGN BUILDER			

Enlarged Partial Floor Plan - Elec. and Reflected Ceiling Plan  
 SCALE 1/4" = 1'-0"

