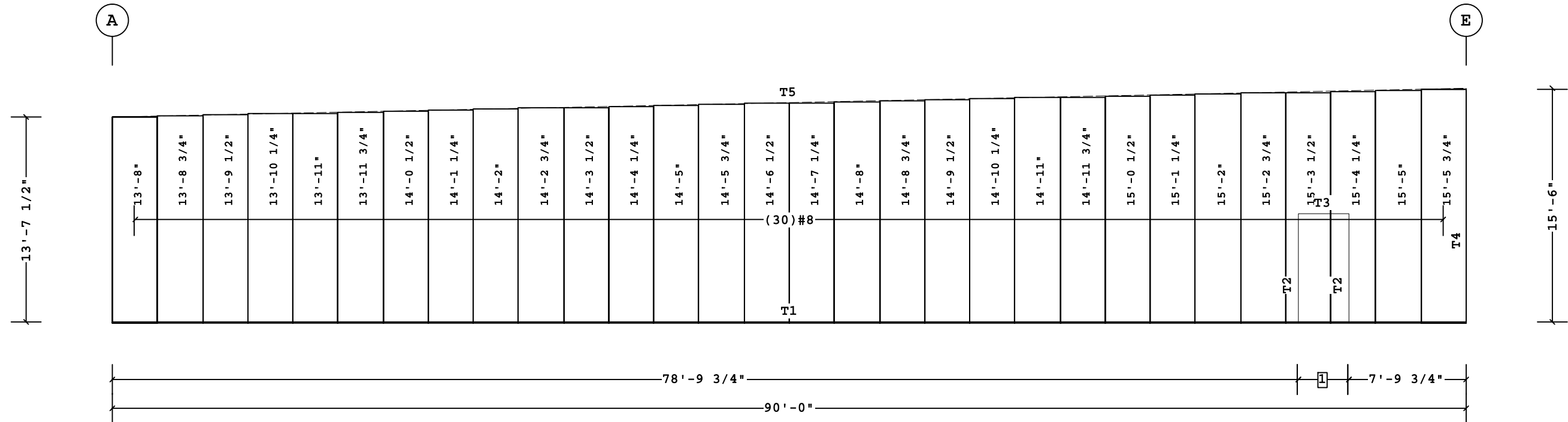


Covering Schedule
 Id Qty Type Start Length Gage OP Fin. Color Increment Direction
 #8 30 SHP 13'-8" 26 1 K SY 3/4" Left to Right
 Oper. Code:1=SQ,SQ
 Finish:K=Butler-Cote
 Color:SY=Cool Shell Gray

Trim Schedule
 Id Parts Color Details
 T1 (3.6)BA225,(7.5)BT12A Cool Shell Gray ENB006,GV386,GV442,NV115,
 NV120,NV128,NV130,NV135,NV143,NV654
 T2 (0.5)0570751,DSF12 Cool Shell Gray NV124,NV139,NV568
 T3 (0.5)DGS12 Cool Shell Gray NV125,NV140,NV566
 T4 (2)SHOCT12,(2.5)0620163 Cool Shell Gray NV118,NV119,NV133,NV134
 T5 (8.8)WA10A,(4.4)MRGT20L,(7.5)SHCL12 Cool Onyx Black KV403,KV404



COVERING ELEVATION AT 1

1 3'-4 1/2"
 Dimension Key

Planograph Schedule
 Id Details
 T1 P-081180,P-081186,P-081505
 T2 P-081203
 T3 P-081202
 T4 P-081180,P-081185
 T5 P-081167,P-081183,P-081186,P-105098,P-GAI

Fastener Schedule
 Part Description
 0097365-112 (T-3) #12-14 x 1 1/4", T-30 Torx Hd w/Washer
 0097364-112 (T-1) 1/4-14 x 3/4", T-30 Torx Hd w/Washer

Shape Name = Shipping Addition, Wall = 1

PERMIT SET- For Building Dept. Approval

1. PRE-DRILLING 1/8 DIAMETER HOLES FOR STRUCTURAL FASTENERS MAY BE REQUIRED FOR HEAVY GAGE NESTED ZEE'S AND/OR FASTENERS TO STRUCTURAL BEAMS 2. STEEL PANELS ARE AN INTEGRAL PART OF THE STRUCTURAL SYSTEM. REMOVAL OR ALTERATION WITHOUT PRIOR AUTHORIZATION IS PROHIBITED. 3. DUE TO MANUFACTURING LIMITATIONS SHORT PANELS MAY REQUIRE FIELD CUTTING, SEE THE COVERING SCHEDULE FOR CUT LENGTHS. 4. SEE JOB DETAILS FOR COVERING AND TRIM FASTENER SPECIFICATION.	THE BUTLER MFG. ENGINEER'S SEAL APPLIES ONLY TO THE WORK PRODUCT OF BUTLER MFG. AND DESIGN AND PERFORMANCE REQUIREMENTS SPECIFIED BY BUTLER. THE BUTLER MFG. ENGINEER'S SEAL DOES NOT APPLY TO THE PERFORMANCE OR DESIGN OF ANY OTHER PRODUCT OR COMPONENT FURNISHED BY BUTLER EXCEPT TO ANY DESIGN OR PERFORMANCE REQUIREMENTS SPECIFIED BY BUTLER.	THIS DRAWING, INCLUDING THE INFORMATION HEREON, REMAINS THE PROPERTY OF BUTLER MFG. IT IS PROVIDED SOLELY FOR ERRECTING THE BUILDING DESCRIBED IN THE APPLICABLE PURCHASE ORDER AND SHALL NOT BE MODIFIED, REPRODUCED OR USED FOR ANY OTHER PURPOSE WITHOUT PRIOR WRITTEN APPROVAL OF BUTLER MFG. THE GENERAL CONTRACTOR AND/OR ERECTOR IS SOLELY RESPONSIBLE FOR ACCURATE GOOD QUALITY WORKMANSHIP IN ERRECTING THIS BUILDING IN ACCORDANCE WITH THIS DRAWING, DETAILS REFERENCED IN THIS DRAWING, ALL APPLICABLE BUTLER MFG. ERECTION GUIDES, AND INDUSTRY STANDARDS PERTAINING TO PROPER ERECTION, INCLUDING THE CORRECT USE OF TEMPORARY BRACING.	BUTLER MANUFACTURING 1540 GENESSEE ST. KANSAS CITY, MO 64102		COVERING ELEVATION AT 1	
			REV: DATE: BY: DESCRIPTION:	BUILDER: Sheridan CUSTOMER: Safelite LOCATION: Portland, Maine PROJECT: Safelite Auto BUILDER'S PO#: 161003		JOB #: 16-008746-01 DATE: 4/29/2016 DRAWN/CHECK: LC PAGE: 21