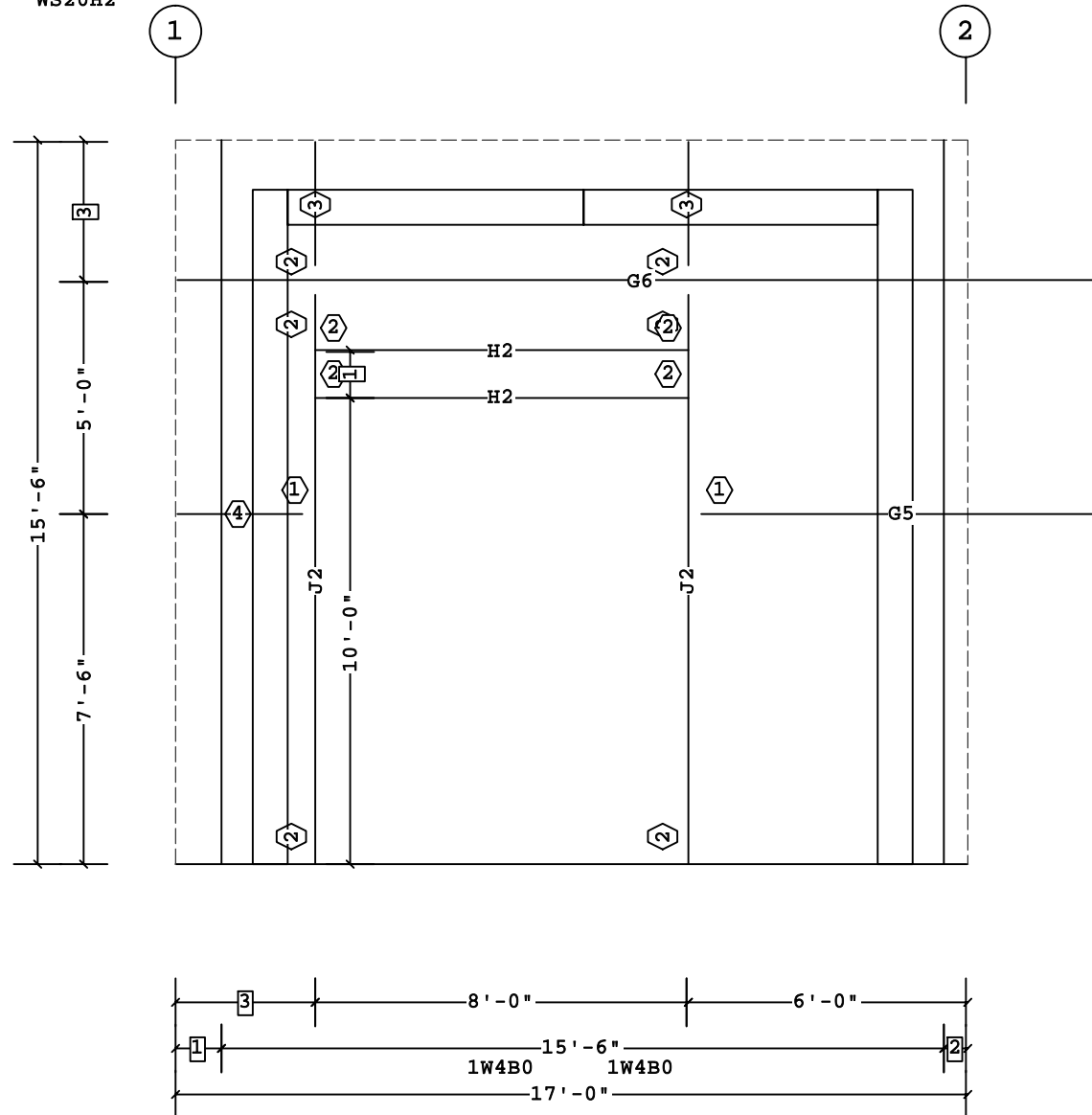


Secondary Part Schedule

Mark	Part	Thick.	Depth	Lap	Detail
G5	00208ZS080841700	0.0600	8 1/2"		WS12H6, WS12A2, WS20F2
G6	00308ZS191141700	0.0600	8 1/2"		WS12H6, WS12A2
G7	00408ZS020841700	0.0600	8 1/2"		WS12H6, WS12A2, WS20F2
H2	00408JS0800017	0.0600	8 1/2"		WS20F9
J2	00208JS1202217	0.0600	8 1/2"		WS20F9, WS20F2, WS20B2, WS20B8
J3	00308JS0208017	0.0600	8 1/2"		WS20H2



SECONDARY ELEVATION AT E

BL

BL

3	3'-0"	4	G7
2	6"	3	J3
1	1'-0"	2	PG1
		1	JTG1

Dimension Key Part Mark Key

Shape Name = Shipping Addition, Wall = 4

PERMIT SET- For Building Dept. Approval

1. UNLESS NOTED, USE 1/2 X 1 1/2 A325-N BOLT (49080) AND NUT (47120) W/O WASHERS. SNUG TIGHTEN BOLTS FOR ALL SECONDARY CONNECTIONS.
 2. FLANGE BRACES ARE AN INTEGRAL PART OF THE STABILITY OF THE STRUCTURAL SYSTEM AND MUST BE PROPERLY INSTALLED PRIOR TO ERECTION OF WALL AND ROOF SHEETS.
 3. REMOVAL OR ALTERATION OF ANY COMPONENT IS PROHIBITED.

THE BUTLER MFG. ENGINEER'S SEAL APPLIES ONLY TO THE WORK PRODUCT OF BUTLER MFG. AND DESIGN AND PERFORMANCE REQUIREMENTS SPECIFIED BY BUTLER. THE BUTLER MFG. ENGINEER'S SEAL DOES NOT APPLY TO THE PERFORMANCE OR DESIGN OF ANY OTHER PRODUCT OR COMPONENT FURNISHED BY BUTLER EXCEPT TO ANY DESIGN OR PERFORMANCE REQUIREMENTS SPECIFIED BY BUTLER.

THIS DRAWING, INCLUDING THE INFORMATION HEREON, REMAINS THE PROPERTY OF BUTLER MFG. IT IS PROVIDED SOLELY FOR ERECTING THE BUILDING DESCRIBED IN THE APPLICABLE PURCHASE ORDER AND SHALL NOT BE MODIFIED, REPRODUCED OR USED FOR ANY OTHER PURPOSE WITHOUT PRIOR WRITTEN APPROVAL OF BUTLER MFG.

THE GENERAL CONTRACTOR AND/OR ERECTOR IS SOLELY RESPONSIBLE FOR ACCURATE GOOD QUALITY WORKMANSHIP IN ERECTING THIS BUILDING IN ACCORDANCE WITH THIS DRAWING, DETAILS REFERENCED IN THIS DRAWING, ALL APPLICABLE BUTLER MFG. ERECTION GUIDES, AND INDUSTRY STANDARDS PERTAINING TO PROPER ERECTION, INCLUDING THE CORRECT USE OF TEMPORARY BRACING.

BUTLER MANUFACTURING 1540 GENESSEE ST. KANSAS CITY, MO 64102			
REV.	DATE	BY	DESCRIPTION
DRAWING SCALE: NTS			

SECONDARY ELEVATION AT E		BUTLER	
BUILDER:	Sheridan	JOB #:	16-008746-01
CUSTOMER:	Safelite	DATE:	4/29/2016
LOCATION:	Portland, Maine	DRAWN/CHECK:	LC
PROJECT:	Safelite Auto	PAGE:	17
BUILDER'S PO#:	161003	VPC VERSION:	2015.2d