

Secondary Part Schedule

Mark	Part	Thick.	Depth	Lap	Detail
E1	00110HS1911417B30	0.0600	10"		BR09W2
E2	00110ES1911417B30	0.0600	10"		RS12PF
P1	00508ZS1911416B3	0.0680	8 1/2"		RS02T1
P2	00608ZS1911415B3	0.0730	8 1/2"		RS02T1
P3	00708ZS1911416B3	0.0680	8 1/2"		RS02T1
P4	00808ZS1911415B3	0.0730	8 1/2"		RS02T1

Part Mark Key

1	001SGA11072
2	001SGA18114
3	002SGA18114
4	003SGA18114
5	004SGA18114
6	001SGA02040

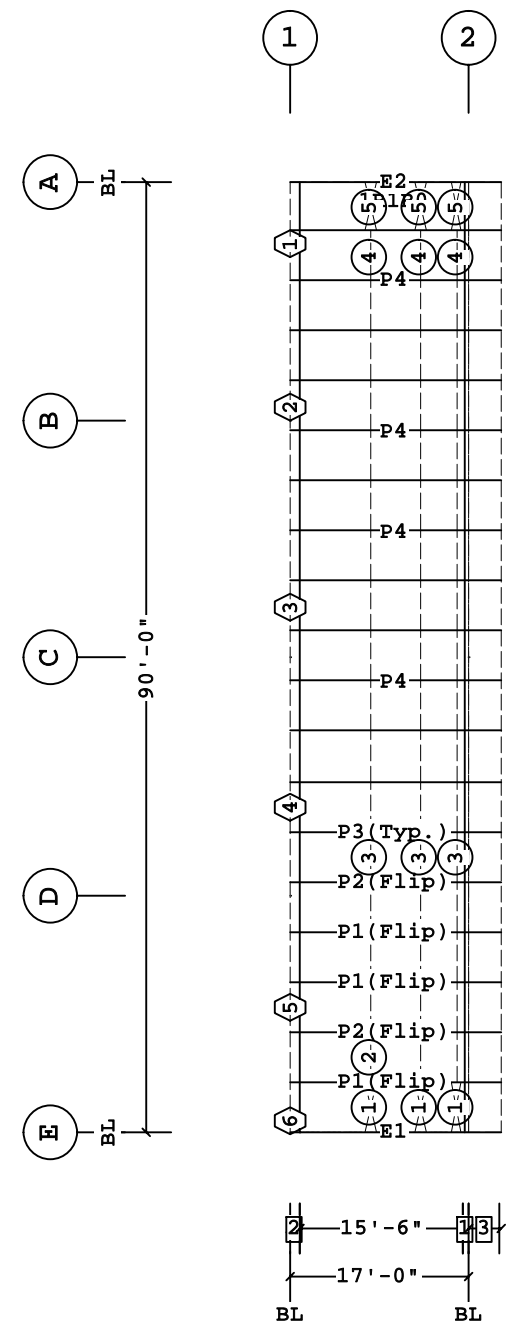
Secondary Bracing Schedule

Id	Qty	Mark No	Spacing
1	6	PBA0500	4'-9"
2	45	CPBB041008(Typ.)	4'-9"
3	3	CPBC050006	4'-9"
4	3	CPBB040902	4'-7 5/8"
5	6	PBA0411	4'-7 5/8"

See SED:
BR09K5, BR09JG, BR09RY, BR09RZ, BR09PP
BR09PH, BR09JH

3	3'-0"
2	1'-0"
1	6"

Dimension Key



ROOF SECONDARY PLAN

PERMIT SET- For Building Dept. Approval

1. UNLESS NOTED, USE 1/2 X 1 1/2 A325-N BOLT (49080) AND NUT (47120) W/O WASHERS. SNUG TIGHTEN BOLTS FOR ALL SECONDARY CONNECTIONS. 2. FLANGE BRACES ARE AN INTEGRAL PART OF THE STABILITY OF THE STRUCTURAL SYSTEM AND MUST BE PROPERLY INSTALLED PRIOR TO ERECTION OF WALL AND ROOF SHEETS. 3. REMOVAL OR ALTERATION OF ANY COMPONENT IS PROHIBITED.	THE BUTLER MFG. ENGINEER'S SEAL APPLIES ONLY TO THE WORK PRODUCT OF BUTLER MFG. AND DESIGN AND PERFORMANCE REQUIREMENTS SPECIFIED BY BUTLER. THE BUTLER MFG. ENGINEER'S SEAL DOES NOT APPLY TO THE PERFORMANCE OR DESIGN OF ANY OTHER PRODUCT OR COMPONENT FURNISHED BY BUTLER EXCEPT TO ANY DESIGN OR PERFORMANCE REQUIREMENTS SPECIFIED BY BUTLER.	THIS DRAWING, INCLUDING THE INFORMATION HEREON, REMAINS THE PROPERTY OF BUTLER MFG. IT IS PROVIDED SOLELY FOR ERECTING THE BUILDING DESCRIBED IN THE APPLICABLE PURCHASE ORDER AND SHALL NOT BE MODIFIED, REPRODUCED OR USED FOR ANY OTHER PURPOSE WITHOUT PRIOR WRITTEN APPROVAL OF BUTLER MFG. THE GENERAL CONTRACTOR AND/OR ERECTOR IS SOLELY RESPONSIBLE FOR ACCURATE GOOD QUALITY WORKMANSHIP IN ERECTING THIS BUILDING IN ACCORDANCE WITH THIS DRAWING, DETAILS REFERENCED IN THIS DRAWING, ALL APPLICABLE BUTLER MFG. ERECTION GUIDES, AND INDUSTRY STANDARDS PERTAINING TO PROPER ERECTION, INCLUDING THE CORRECT USE OF TEMPORARY BRACING.	BUTLER MANUFACTURING 1540 GENESSEE ST. KANSAS CITY, MO 64102		ROOF SECONDARY PLAN	
			REV: DATE: BY: DESCRIPTION:	BUILDER: Sheridan CUSTOMER: Safelite LOCATION: Portland, Maine PROJECT: Safelite Auto BUILDER'S PO#: 161003	JOB #: 16-008746-01 DATE: 4/29/2016 DRAWN/CHECK: LC PAGE: 11	