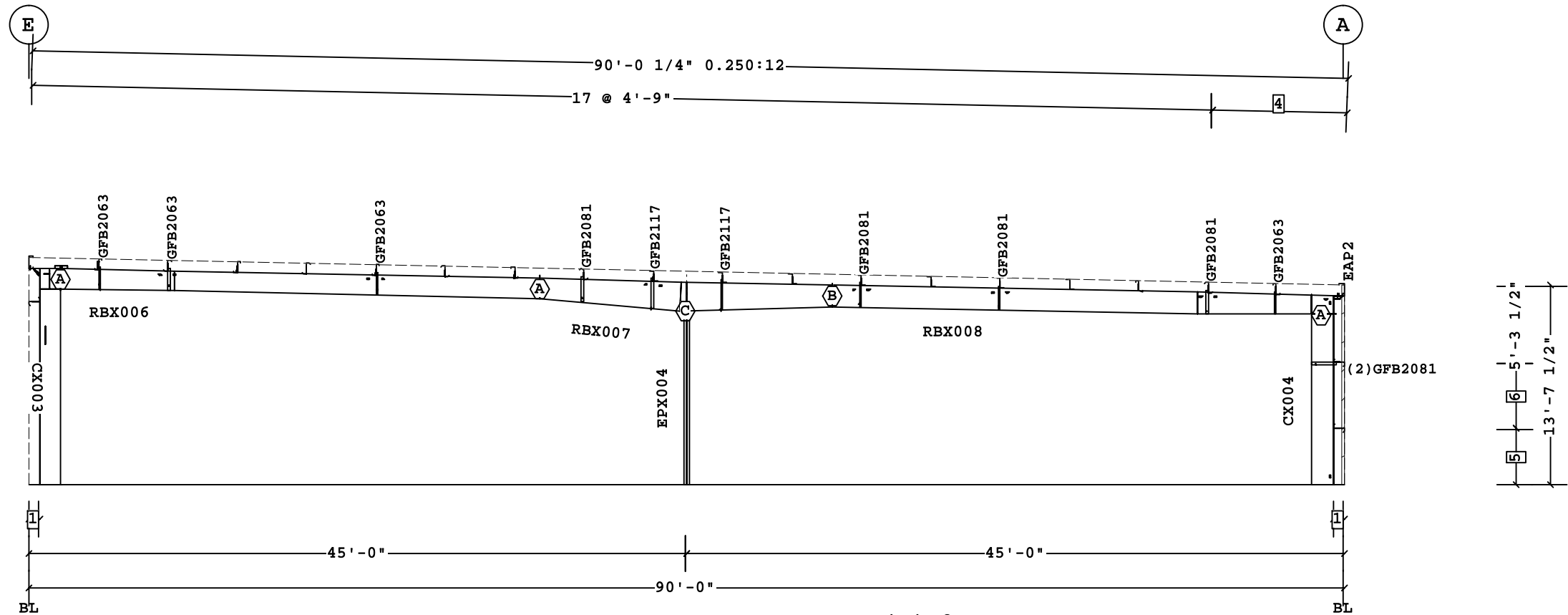


| Part | Mem | Width | Thick | WebThk. | Depth1 | Depth2 | Approx.Lgth | Approx.Weight | Detail |
|--------|-----|--------|-------|---------|--------|------------|--------------|---------------|--------|
| CX003 | 1 | 8.0000 | .2500 | .1345 | 1'-6" | 1'-6" | 14'-9 5/16" | 395# | |
| RBX006 | 2 | 5.0000 | .2500 | .1345 | 1'-5" | 1'-4" | 32'-9 5/8" | 598# | |
| | 3 | 5.0000 | .3125 | .1345 | 1'-4" | 1'-4" | | | |
| RBX007 | 4 | 5.0000 | .3125 | .1644 | 1'-4" | 2'-0" | 20'-0" | 473# | |
| | 5 | 5.0000 | .3125 | .1644 | 2'-0" | 1'-6" | | | |
| RBX008 | 6 | 5.0000 | .3125 | .1345 | 1'-6" | 1'-6" | 34'-11 7/8" | 660# | |
| | 7 | 5.0000 | .2500 | .1345 | 1'-6" | 1'-4 1/16" | | | |
| CX004 | 8 | 5.0000 | .2500 | .1345 | 1'-6" | 1'-6" | 11'-7 1/2" | 225# | |
| EPX004 | 9 | 5.0000 | .1875 | .1345 | 10" | 10" | 11'-10 9/16" | 92# | BR25CA |

Frame Clearances
 Horiz. Clearance between members 1(CX003) and 8(CX004): 85'-7"
 Vert. Clearance at member 1(CX003): 13'-3 7/16"
 Vert. Clearance at member 8(CX004): 11'-7 1/2"
 Vert. Clearance at member 9(EPX004): 11'-10 1/2"
 Finished Floor Elevation = 104'-0" (Unless Noted Otherwise)

| Bolt Connection & Plate Schedule | | | | | | | | |
|----------------------------------|-----|-------|-----------|-------------|--------------|----------|---------|---------|
| Id | Qty | Grade | Bolt Dia. | Bolt Length | Plate Thick. | Rows Out | Rows In | PartNo |
| A | 6 | A325 | 3/4" | 2 1/2" | 3/8" | 2 | 1 | 0097284 |
| B | 8 | A325 | 3/4" | 2 1/2" | 3/8" | 3 | 1 | 0097284 |
| C | 4 | A325 | 1/2" | 1 1/2" | 3/8" | 1 | 1 | 49080 |



FRAME CROSS SECTION AT FRAME LINE(S) 2

- 6 4'-6"
- 5 3'-10"
- 4 2 @ 4'-7 5/8"
- 3 0'-0"
- 2 3'-0"
- 1 8 1/2"

Dimension Key

Shape Name = Shipping Addition Wall 4, Frame 2

PERMIT SET- For Building Dept. Approval


1. USE 1/2 X 1 1/2 A325-N BOLT (49080) AND NUT (47120) W/O WASHERS. SNUG TIGHTEN BOLTS FOR ALL SECONDARY CONNECTIONS, SECONDARY CLIP CONNECTIONS, AND FLANGE BRACE CONNECTIONS, UNLESS NOTED OTHERWISE.
 2. SLOT REINFORCEMENT PLATES NEED NOT BE LOCATED ON THE SAME SIDE OF THE WEB AS THE HILLSIDE WASHER.

THE BUTLER MFG. ENGINEER'S SEAL APPLIES ONLY TO THE WORK PRODUCT OF BUTLER MFG. AND DESIGN AND PERFORMANCE REQUIREMENTS SPECIFIED BY BUTLER. THE BUTLER MFG. ENGINEER'S SEAL DOES NOT APPLY TO THE PERFORMANCE OR DESIGN OF ANY OTHER PRODUCT OR COMPONENT FURNISHED BY BUTLER EXCEPT TO ANY DESIGN OR PERFORMANCE REQUIREMENTS SPECIFIED BY BUTLER.

THIS DRAWING, INCLUDING THE INFORMATION HEREON, REMAINS THE PROPERTY OF BUTLER MFG. IT IS PROVIDED SOLELY FOR ERRECTING THE BUILDING DESCRIBED IN THE APPLICABLE PURCHASE ORDER AND SHALL NOT BE MODIFIED, REPRODUCED OR USED FOR ANY OTHER PURPOSE WITHOUT PRIOR WRITTEN APPROVAL OF BUTLER MFG.

THE GENERAL CONTRACTOR AND/OR ERECTOR IS SOLELY RESPONSIBLE FOR ACCURATE GOOD QUALITY WORKMANSHIP IN ERRECTING THIS BUILDING IN ACCORDANCE WITH THIS DRAWING, DETAILS REFERENCED IN THIS DRAWING, ALL APPLICABLE BUTLER MFG. ERECTION GUIDES, AND INDUSTRY STANDARDS PERTAINING TO PROPER ERECTION, INCLUDING THE CORRECT USE OF TEMPORARY BRACING.

| BUTLER MANUFACTURING 1540 GENESSEE ST. KANSAS CITY, MO 64102 | | | |
|---|------|----|-------------|
| REV. | DATE | BY | DESCRIPTION |
| | | | |
| | | | |
| | | | |
| | | | |
| DRAWING SCALE: NTS | | | |

| FRAME CROSS SECTION AT FRAME LINE(S) 2 | | | |
|--|-----------------|--|--------------|
| BUILDER: | Sheridan | JOB #: | 16-008746-01 |
| CUSTOMER: | Safelite | DATE: | 4/29/2016 |
| LOCATION: | Portland, Maine | DRAWN/CHECK: | LC / |
| PROJECT: | Safelite Auto | PAGE: | 8 |
| BUILDER'S PO#: | 161003 |  Butler Manufacturing VPC VERSION: 2015.2d a division of BlueScope Buildings North America, Inc. | |