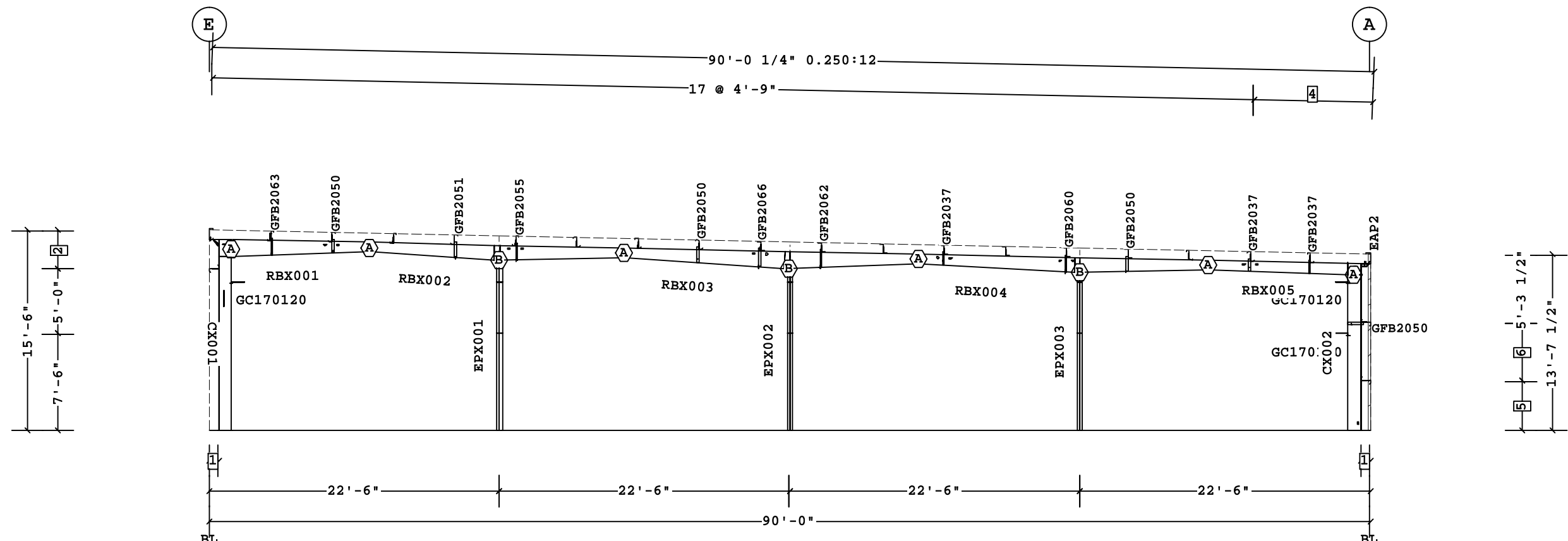


Part	Mem	Width	Thick	WebThk.	Depth1	Depth2	Approx.Lgth	Approx.Weight	Detail
CX001	1	5.0000	.1875	.1345	1'-0"	1'-0"	14'-9 5/16"	218#	
RBX001	2	5.0000	.1345	.1345	1'-4"	9"	10'-9 1/2"	129#	
RBX002	3	5.0000	.1875	.1345	9"	1'-2"	19'-8 3/4"	249#	
	4	5.0000	.1875	.1345	1'-2"	9"			
RBX003	5	5.0000	.1345	.1345	9"	1'-4"	22'-9 5/16"	256#	
	6	5.0000	.1345	.1345	1'-4"	9"			
RBX004	7	5.0000	.1875	.1345	9"	1'-2"	22'-6 1/16"	282#	
	8	5.0000	.1875	.1345	1'-2"	9"			
RBX005	9	5.0000	.1345	.1345	9"	11"	12'-5 7/8"	130#	
CX002	10	5.0000	.1345	.1345	1'-0"	1'-0"	12'-0 7/16"	141#	
EPX001	11	5.0000	.1345	.1345	10"	10"	13'-2 1/8"	79#	BR25CA
EPX002	12	5.0000	.1345	.1345	10"	10"	12'-6 5/8"	76#	BR25CA
EPX003	13	5.0000	.1345	.1345	10"	10"	12'-2 7/8"	74#	BR25CA

Frame Clearances
 Horiz. Clearance between members 1(CX001) and 10(CX002): 86'-7"
 Vert. Clearance at member 1(CX001): 13'-4 9/16"
 Vert. Clearance at member 10(CX002): 12'-0 7/16"
 Vert. Clearance at member 11(EPX001): 13'-2 1/16"
 Vert. Clearance at member 12(EPX002): 12'-6 1/2"
 Vert. Clearance at member 13(EPX003): 12'-2 13/16"
 Finished Floor Elevation = 104'-0" (Unless Noted Otherwise)

⊕ Bolt Connection & Plate Schedule

Id	Qty	Grade	Bolt Dia.	Bolt Length	Plate Thick.	Rows Out	Rows In	PartNo
A	4	A325	3/4"	2 1/2"	3/8"	1	1	0097284
B	4	A325	1/2"	1 1/2"	3/8"	1	1	49080



FRAME CROSS SECTION AT FRAME LINE(S) 1

- 6 4'-6"
 - 5 3'-10"
 - 4 2 @ 4'-7 5/8"
 - 3 0'-0"
 - 2 3'-0"
 - 1 8 1/2"
- Dimension Key

Shape Name = Shipping Addition Wall 4, Frame 1

PERMIT SET- For Building Dept. Approval

1. USE 1/2 X 1 1/2 A325-N BOLT (49080) AND NUT (47120) W/O WASHERS. SNUG TIGHTEN BOLTS FOR ALL SECONDARY CONNECTIONS, SECONDARY CLIP CONNECTIONS, AND FLANGE BRACE CONNECTIONS, UNLESS NOTED OTHERWISE. 2. SLOT REINFORCEMENT PLATES NEED NOT BE LOCATED ON THE SAME SIDE OF THE WEB AS THE HILLSIDE WASHER.	THE BUTLER MFG. ENGINEER'S SEAL APPLIES ONLY TO THE WORK PRODUCT OF BUTLER MFG. AND DESIGN AND PERFORMANCE REQUIREMENTS SPECIFIED BY BUTLER. THE BUTLER MFG. ENGINEER'S SEAL DOES NOT APPLY TO THE PERFORMANCE OR DESIGN OF ANY OTHER PRODUCT OR COMPONENT FURNISHED BY BUTLER EXCEPT TO ANY DESIGN OR PERFORMANCE REQUIREMENTS SPECIFIED BY BUTLER.	THIS DRAWING, INCLUDING THE INFORMATION HEREON, REMAINS THE PROPERTY OF BUTLER MFG. IT IS PROVIDED SOLELY FOR ERECTING THE BUILDING DESCRIBED IN THE APPLICABLE PURCHASE ORDER AND SHALL NOT BE MODIFIED, REPRODUCED OR USED FOR ANY OTHER PURPOSE WITHOUT PRIOR WRITTEN APPROVAL OF BUTLER MFG. THE GENERAL CONTRACTOR AND/OR ERECTOR IS SOLELY RESPONSIBLE FOR ACCURATE GOOD QUALITY WORKMANSHIP IN ERECTING THIS BUILDING IN ACCORDANCE WITH THIS DRAWING, DETAILS REFERENCED IN THIS DRAWING, ALL APPLICABLE BUTLER MFG. ERECTION GUIDES, AND INDUSTRY STANDARDS PERTAINING TO PROPER ERECTION, INCLUDING THE CORRECT USE OF TEMPORARY BRACING.	BUTLER MANUFACTURING 1540 GENESSEE ST. KANSAS CITY, MO 64102		FRAME CROSS SECTION AT FRAME LINE(S) 1	
			REV: DATE: BY: DESCRIPTION:	BUILDER: Sheridan CUSTOMER: Safelite LOCATION: Portland, Maine PROJECT: Safelite Auto BUILDER'S PO#: 161003		JOB #: 16-008746-01 DATE: 4/29/2016 DRAWN/CHECK: LC PAGE: 7