



Butler Manufacturing
a division of BlueScope Buildings North America, Inc.

DRAWING INDEX	
DRAWING TITLE	PAGES
COVER SHEET	1
NOTES	2 - 3
ANCHOR ROD PLAN	4 - 5
PRIMARY STRUCTURAL	6 - 10
SECONDARY STRUCTURAL	11 - 19
COVERING	20 - 26
SPECIAL DRAWINGS	
STANDARD ERECTION DETAILS	
PLANOGRAPH DETAILS	

DRAWING RELEASE HISTORY		
TYPE	DATE	DESCRIPTION
Anchor Rod Drawings	04/29/16	FOR CONSTRUCTION
Permit Drawings	04/29/16	PERMIT SET- For Building Dept. Approval

GENERAL NOTES

MATERIALS

3 PLATE WELDED SECTIONS
COLD FORMED LIGHT GAGE SHAPES
BRACE RODS
HOT ROLLED MILL SHAPES
HOT ROLLED ANGLES
HOLLOW STRUCTURAL SECTION (HSS)
CLADDING

ASTM DESIGNATION

A529, A572, A1011, A1018
A653, A1011
A572, A510
A36, A529, A572, A588, A992
A529, A572, A588, A992
A500
A653, A792

GRADE 55
GRADE 60
GRADE 50
GRADE 36 OR 50
GRADE 50
GRADE B
GRADE 50 OR GRADE 80

HIGH STRENGTH BOLT TIGHTENING REQUIREMENTS

IT IS THE RESPONSIBILITY OF THE ERECTOR TO ENSURE PROPER BOLT TIGHTNESS IN ACCORDANCE WITH APPLICABLE REGULATIONS. SEE RCSC SPECIFICATION FOR STRUCTURAL JOINTS USING HIGH STRENGTH BOLTS FOR MORE INFORMATION. SEE ERECTION GUIDE FOR BOLT TIGHTENING INSTRUCTIONS. THE FOLLOWING CRITERIA MAY BE USED TO DETERMINE THE BOLT TIGHTNESS (I.E. -SNUG TIGHT OR PRE-TENSION) UNLESS REQUIRED OTHERWISE BY LOCAL JURISDICTION OR CONTRACT.

ALL A490 BOLTS SHALL BE "PRE-TENSIONED". A325 BOLTS IN PRIMARY FRAMING AND BRACING CONNECTIONS MAY BE "SNUG-TIGHT" EXCEPT AS FOLLOWS;

PRE-TENSION A325 BOLTS IF BUILDING SUPPORTS A CRANE GREATER THAN 5 TON CAPACITY.

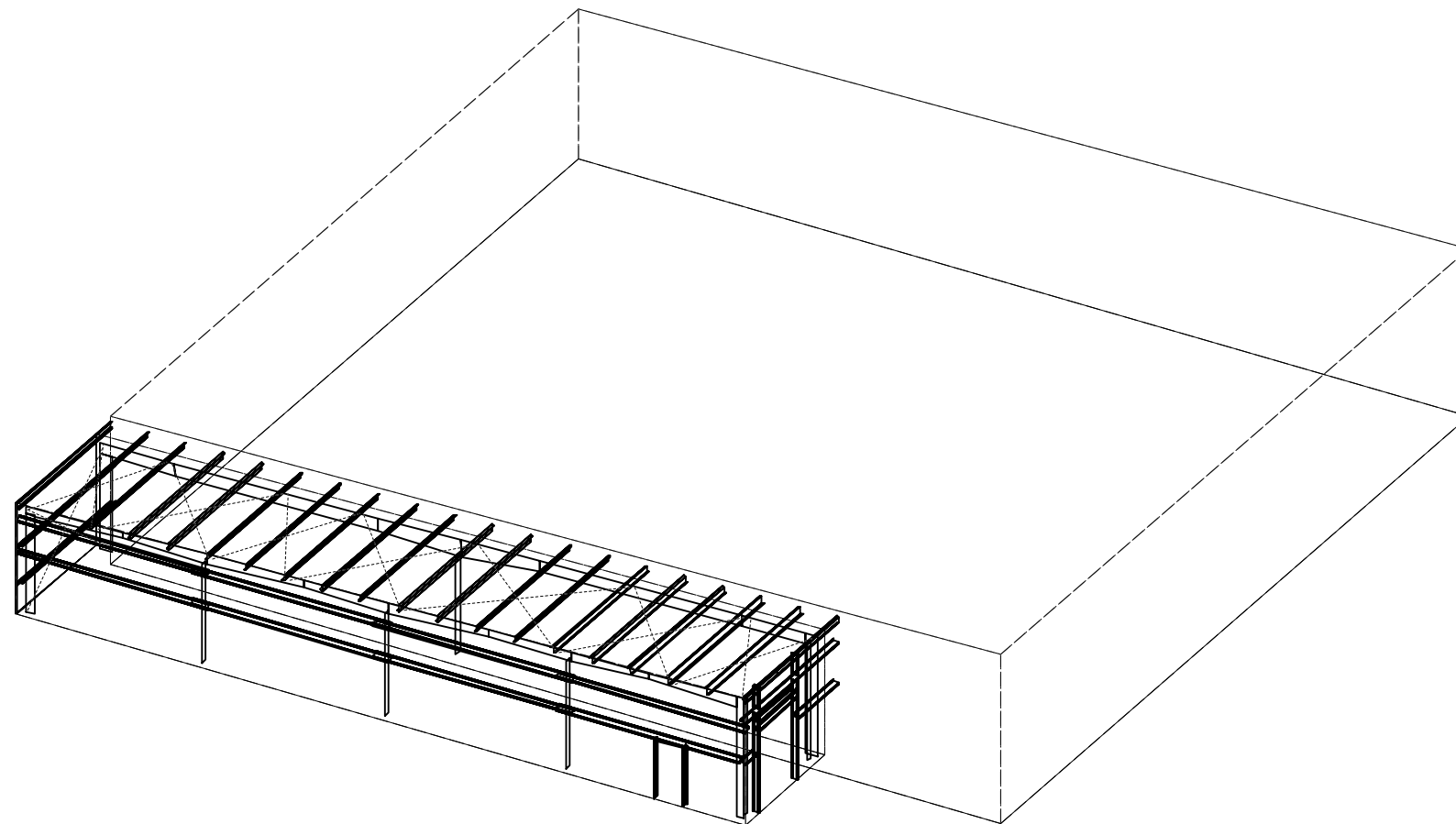
PRE-TENSION A325 BOLTS IF BUILDING SUPPORTS MACHINERY THAT CREATES VIBRATION, IMPACT, OR STRESS REVERSALS ON CONNECTIONS.

PRE-TENSION A325 BOLTS IF LOCATED IN HIGH SEISMIC AREAS. FOR IBC BASED CODES; HIGH SEISMIC IS DESIGN CATEGORY D, E OR F. SEE CODES AND LOADS SECTION BELOW FOR DETAILS.

PRE-TENSION ANY CONNECTION WITH DESIGNATION A325-SC. SLIP CRITICAL (SC) CONNECTIONS MUST BE FREE OF PAINT, OIL OR OTHER MATERIALS THAT REDUCE FRICTION AT CONTACT SURFACES. GALVANIZED OR LIGHTLY RUSTED SURFACES ARE ACCEPTABLE.

IN CANADA, ALL A325 AND A490 BOLTS SHALL BE "PRE-TENSIONED", EXCEPT FOR SECONDARY MEMBERS AND FLANGE BRACES.

SECONDARY MEMBERS AND FLANGE BRACE CONNECTIONS ARE ALWAYS "SNUG TIGHT", UNLESS INDICATED OTHERWISE IN ERECTION DRAWING DETAILS.



THE BUTLER MFG. ENGINEER'S SEAL APPLIES ONLY TO THE WORK PRODUCT OF BUTLER MFG. AND DESIGN AND PERFORMANCE REQUIREMENTS SPECIFIED BY BUTLER. THE BUTLER MFG. ENGINEER'S SEAL DOES NOT APPLY TO THE PERFORMANCE OR DESIGN OF ANY OTHER PRODUCT OR COMPONENT FURNISHED BY BUTLER EXCEPT TO ANY DESIGN OR PERFORMANCE REQUIREMENTS SPECIFIED BY BUTLER.

THIS DRAWING, INCLUDING THE INFORMATION HEREON, REMAINS THE PROPERTY OF BUTLER MFG. IT IS PROVIDED SOLELY FOR ERECTING THE BUILDING DESCRIBED IN THE APPLICABLE PURCHASE ORDER AND SHALL NOT BE MODIFIED, REPRODUCED OR USED FOR ANY OTHER PURPOSE WITHOUT PRIOR WRITTEN APPROVAL OF BUTLER MFG.

THE GENERAL CONTRACTOR AND/OR ERECTOR IS SOLELY RESPONSIBLE FOR ACCURATE GOOD QUALITY WORKMANSHIP IN ERECTING THIS BUILDING IN ACCORDANCE WITH THIS DRAWING, DETAILS REFERENCED IN THIS DRAWING, ALL APPLICABLE BUTLER MFG. ERECTION GUIDES, AND INDUSTRY STANDARDS PERTAINING TO PROPER ERECTION, INCLUDING THE CORRECT USE OF TEMPORARY BRACING.

BUTLER MANUFACTURING
1540 GENESSEE ST. KANSAS CITY, MO 64102

COVER SHEET

BUILDER: Sheridan	<p>Butler Manufacturing VPC VERSION: 2015.2d</p>	JOB #: 16-008746-01
CUSTOMER: Safelite		DATE: 4/29/2016
LOCATION: Portland, Maine		DRAWN/CHECK: LC
PROJECT: Safelite Auto		PAGE: 1
BUILDER'S PO#: 161003		