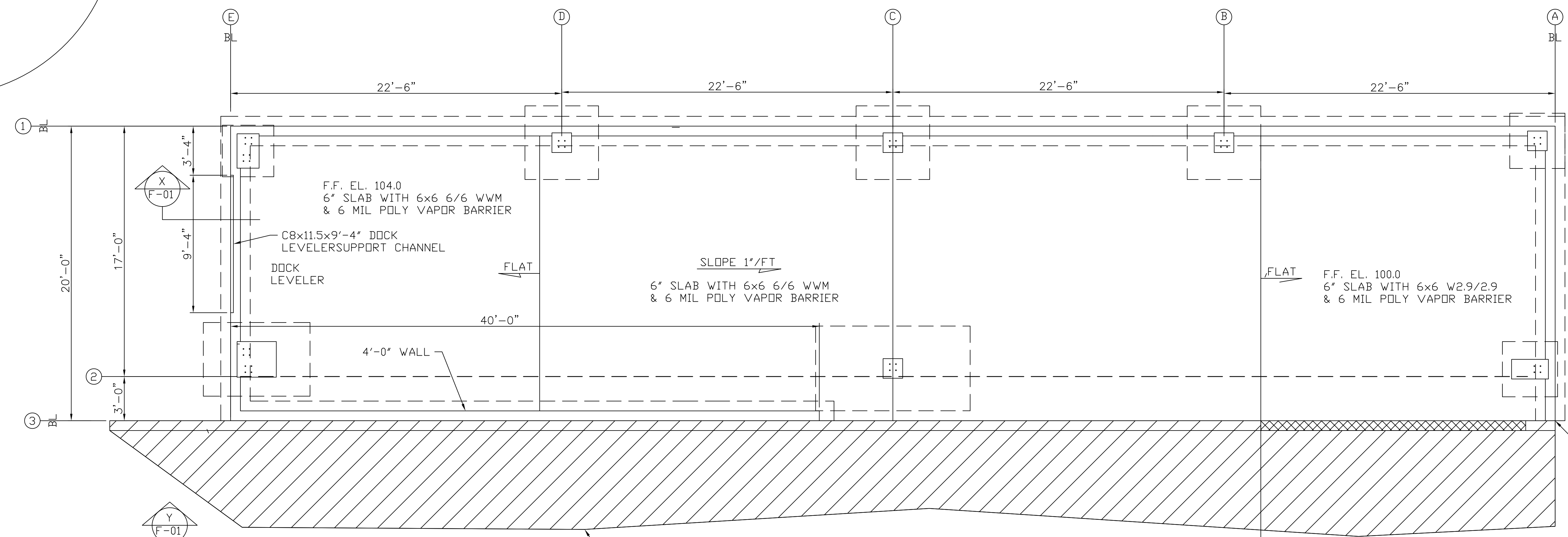


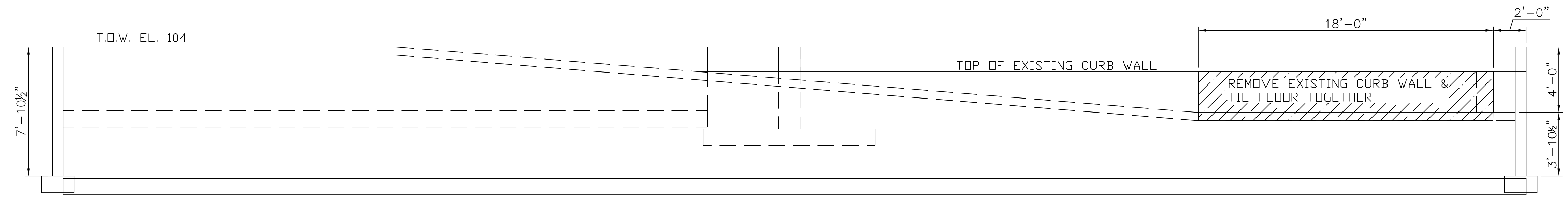
X SECTION



PLAN VIEW

DOWEL WALLS @ 12" O.C. TO EXISTING WALLS & SLAB @ 18" TO EXISTING SLAB WITH #4x18", 6" EMBED.

NOTE:  
GENERATOR SLAB TO BE 6'x10'x6"  
WITH #4 REBAR @12" O.C.  
LOCATION TO BE DETERMINED



Y SECTION

NOTE:  
WE ARE USING F.F. EL.100.00  
VERSUS ACTUAL F.F. EL. 72.50  
ON THESE PLANS.

DESIGN NOTES:

- DESIGN SOIL BEARING CAPACITY = 1,500 PSF
- FLOOR SLAB CONCRETE TO HAVE MINIMUM COMPRESSIVE STRENGTH OF 3000 PSI AT 28 DAYS.
- FOUNDATION CONCRETE TO HAVE MINIMUM COMPRESSIVE STRENGTH OF 3000 PSI AT 28 DAYS.
- LL REINFORCING STEEL SHALL CONFORM TO A.S.T.M. A-615 GRADE 60.
- OVERLAP ALL REBAR 36 BAR DIAMETERS MIN., ie. #4 BAR = 1'-6", #5 BAR = 2'-0", #6 BAR = 2'-3".
- FOUNDATION MUST BE SQUARE, LEVEL AND SMOOTH.
- ANCHOR RODS TO BE A.S.T.M. F-1554 GRADE 36 OR EQUAL UNLESS OTHERWISE NOTED.
- LOCATE ANCHOR RODS BY MEANS OF A TEMPLATE. DO NOT HAND SET ANCHOR RODS!
- DESIGN LOADS PER 2009 IBC:  
WIND LOAD = 99 MPH, EXPOSURE B.  
ROOF SNOW LOAD = 42 PSF.  
COLLATERAL LOAD = 3 PSF.

DATE	REVISION	DRAWING STATUS		ENGINEERING DESIGNS FOR		JOB NO.	
		EST. NO.		Safelite AutoGlass		16-1003	
		SIZE		421 Warren Avenue		ENGINEERING	
		TYPE		Portland, Maine		DWG. NO.	
		DRAWN BY	RAJP	TITLE		F-01	
		REVIEWED BY	DS	Foundation Plan, Elevation & Details			
		SCALE	AS NOTED	DESIGN BUILDER			
		DATE	05/21/2016				

