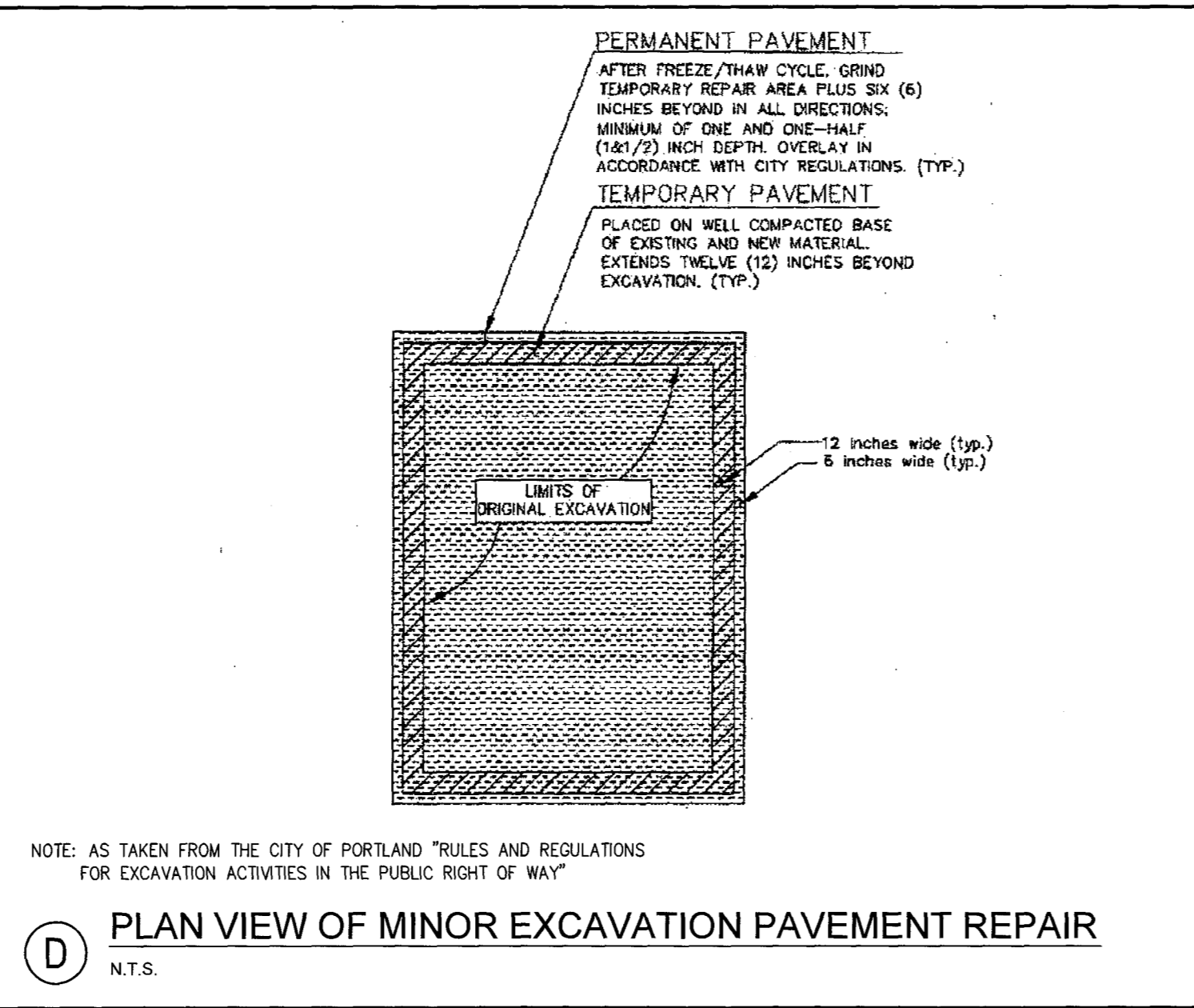
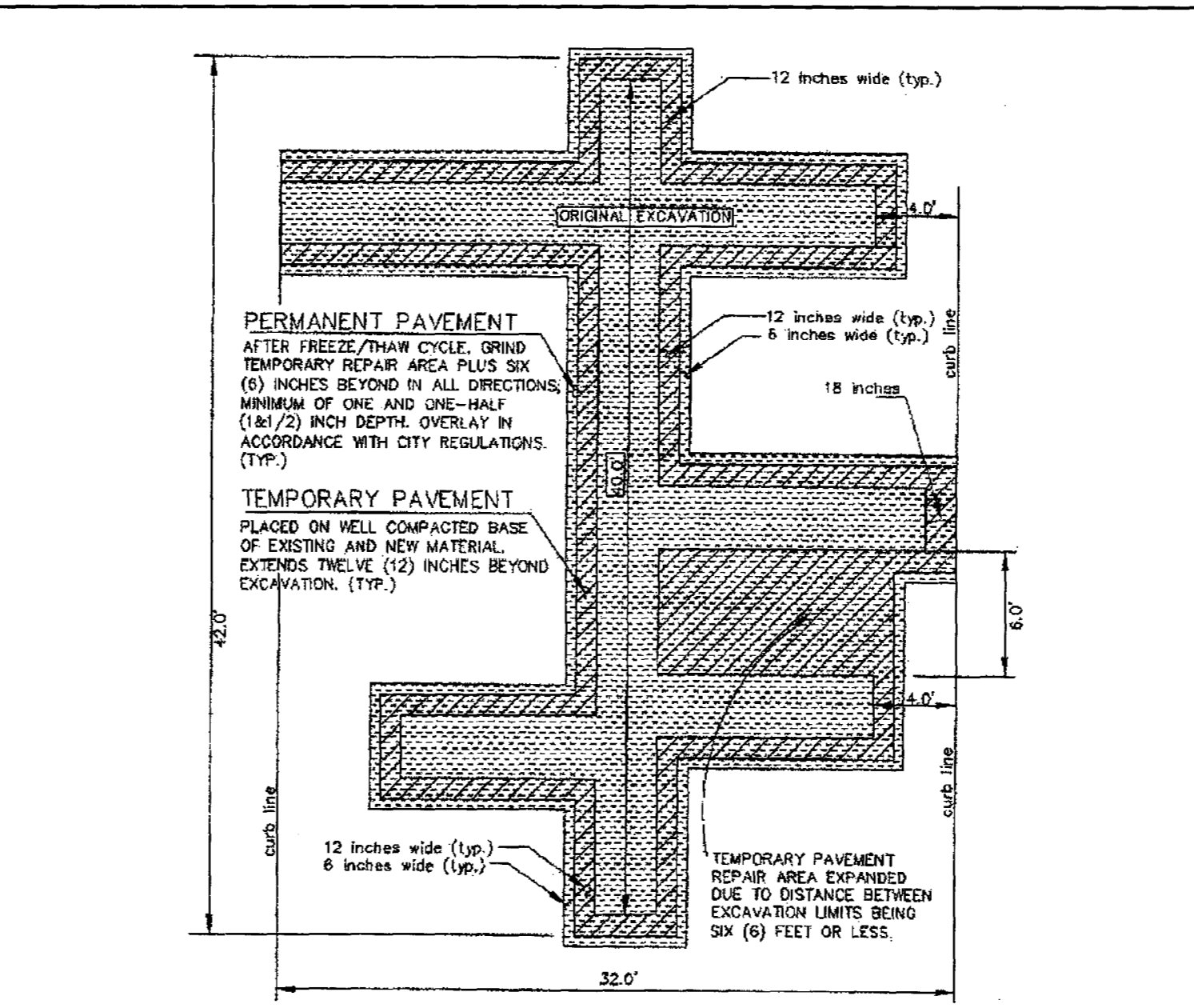


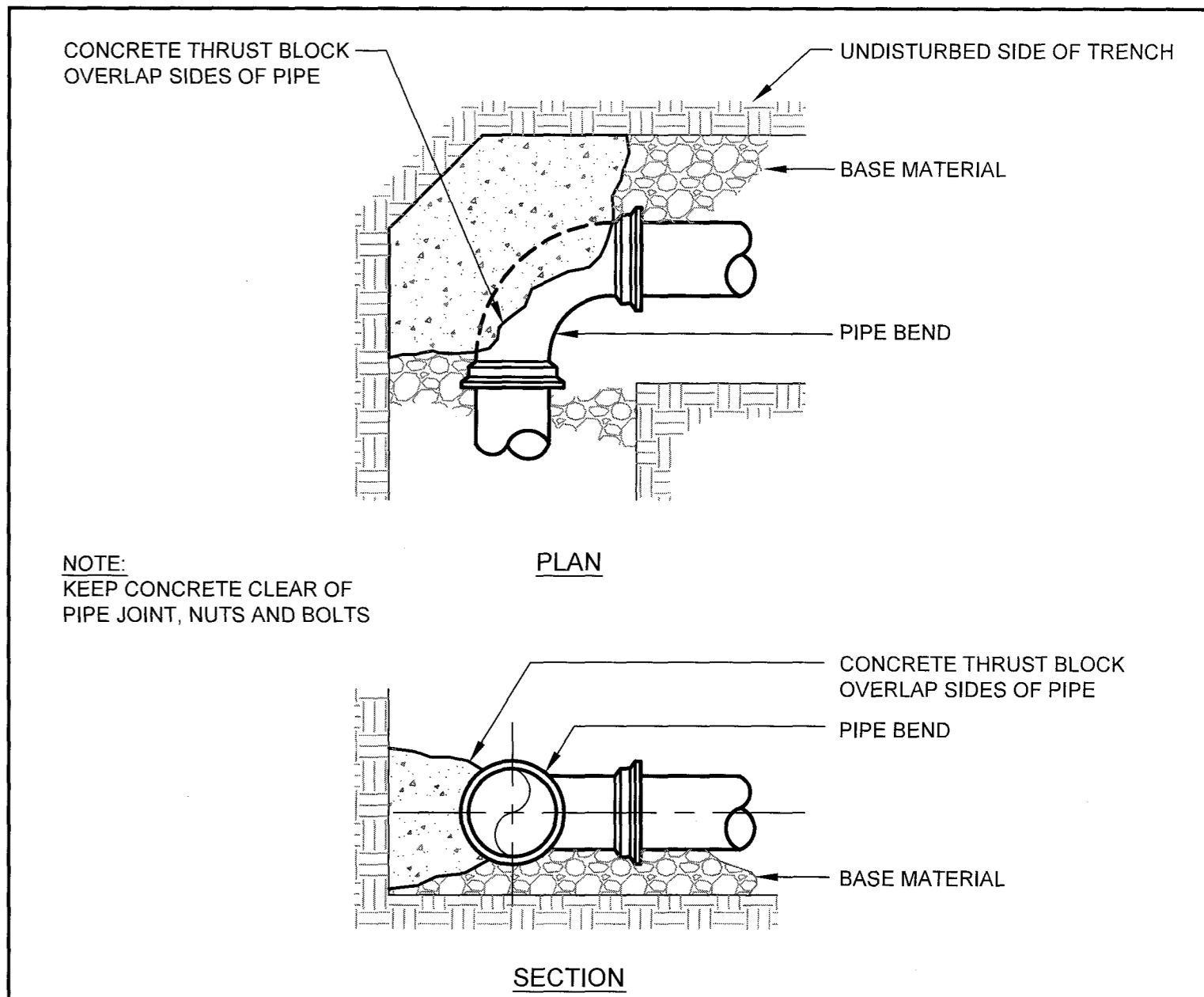
(A) RIPRAP OUTLET APRON DETAIL
N.T.S.



(D) PLAN VIEW OF MINOR EXCAVATION PAVEMENT REPAIR
N.T.S.



(G) PLAN VIEW OF MAJOR EXCAVATION PAVEMENT REPAIR
N.T.S.



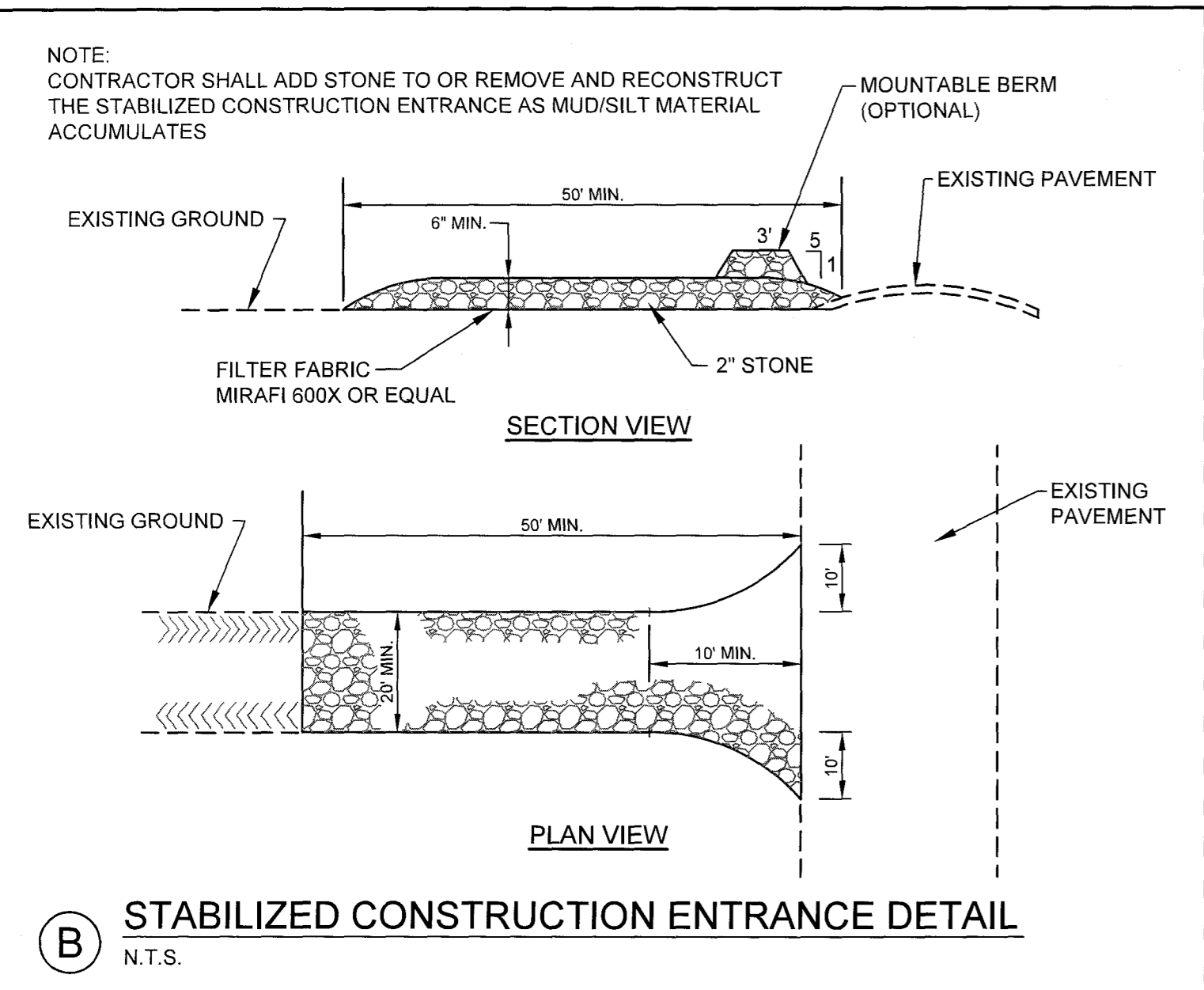
THRUST/RETAINER GLAND SCHEDULE		
1/4 BEND	(90°)	USE POURED-IN-PLACE THRUST BLOCK WITH GRIPRING™ MECHANICAL JOINT RESTRAINT
1/8 BEND	(45°)	THRUST BLOCK W/ GRIPRING™
1/8 BEND	(22 1/2°)	THRUST BLOCK W/ GRIPRING™
1/8 BEND	(11 1/4°)	THRUST BLOCK W/ GRIPRING™

THE ABOVE SCHEDULE IS SUBJECT TO THE APPROVAL OF THE ON-SITE INSPECTOR DUE TO SOILS AND WORKING PRESSURES IN THE AREA.

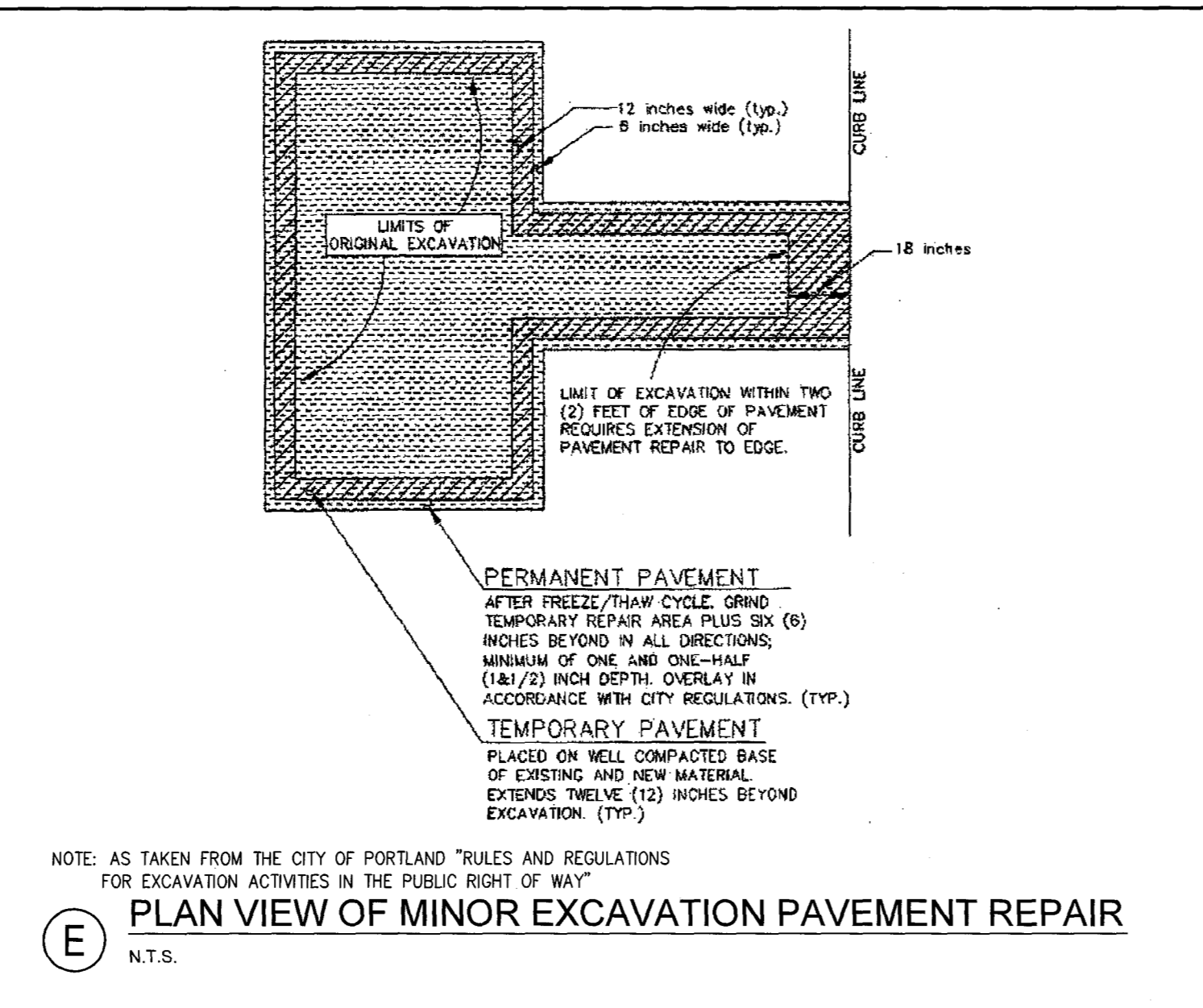
NOTES:

- THE PORTLAND WATER DISTRICT MAY HAVE INSPECTION FEES AND REQUIRE OBSERVATION OF ALL PIPING INSTALLATION BEFORE BURIAL. REFER TO SPECIFICATIONS.
- FOR WATER MAIN LAYOUT SEE DRAWING C-3.00
- REFER TO SPECIFICATIONS FOR TESTING AND CHLORINATION REQUIREMENTS.
- ALL HYDRANTS AND VALVES TO BE EPOXY COATED, NUTS & BOLTS TO BE STAINLESS STEEL.
- SERVICE RODS FOR DOMESTIC SERVICE OR AIR VALVES TO BE STAINLESS STEEL.

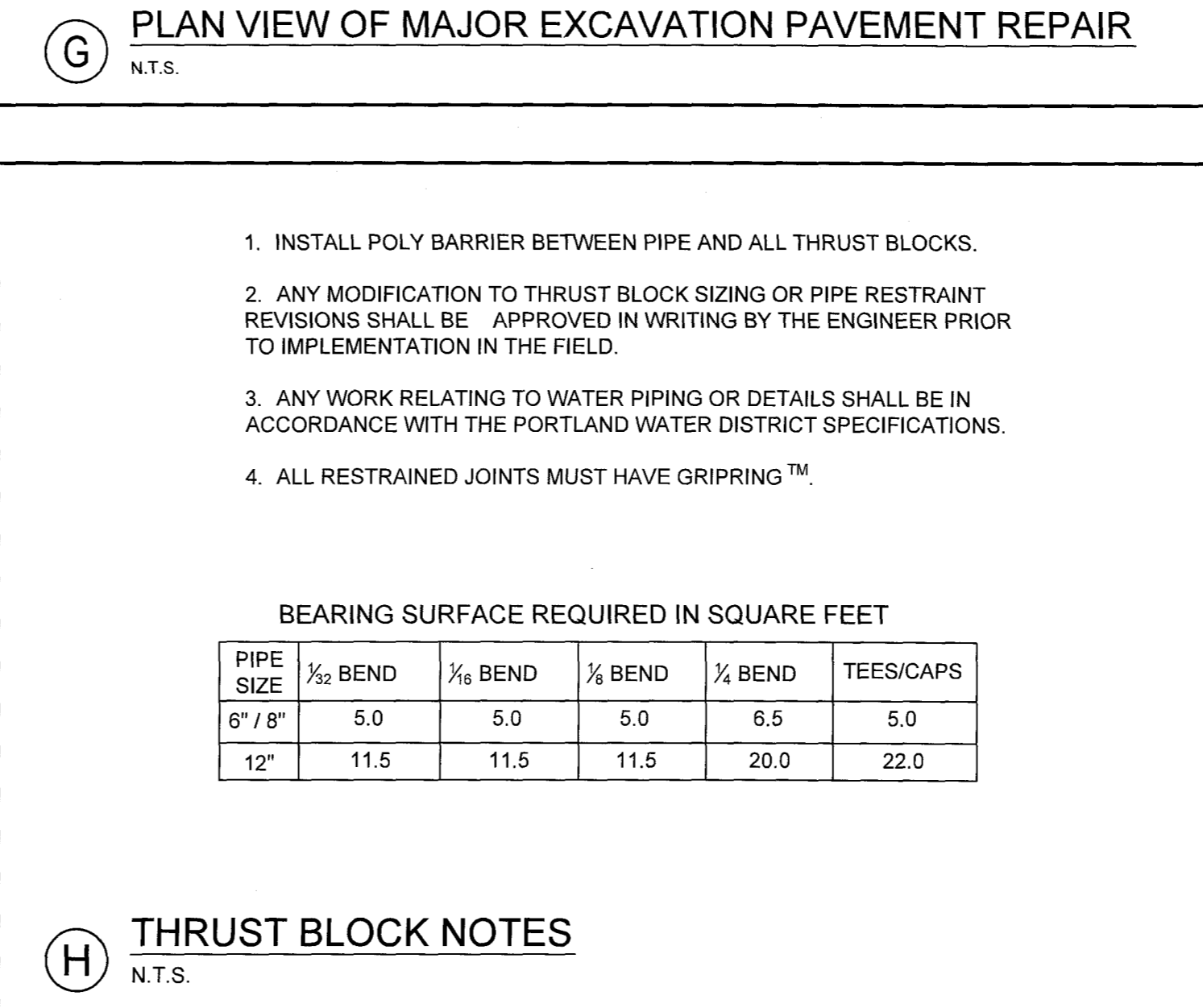
(J) TYPICAL THRUST BLOCK PLACEMENT ON BENDS DETAIL
N.T.S.



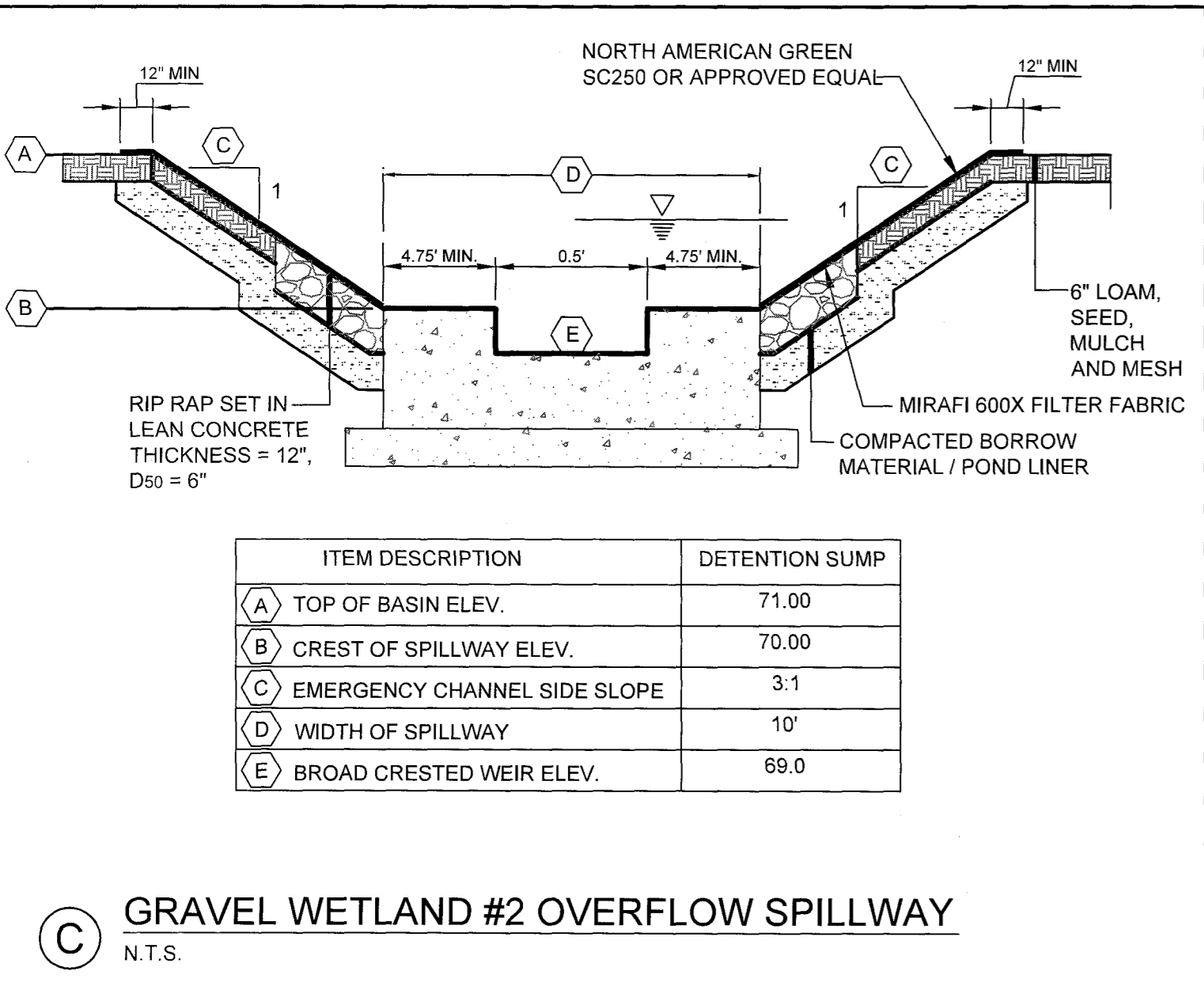
(B) STABILIZED CONSTRUCTION ENTRANCE DETAIL
N.T.S.



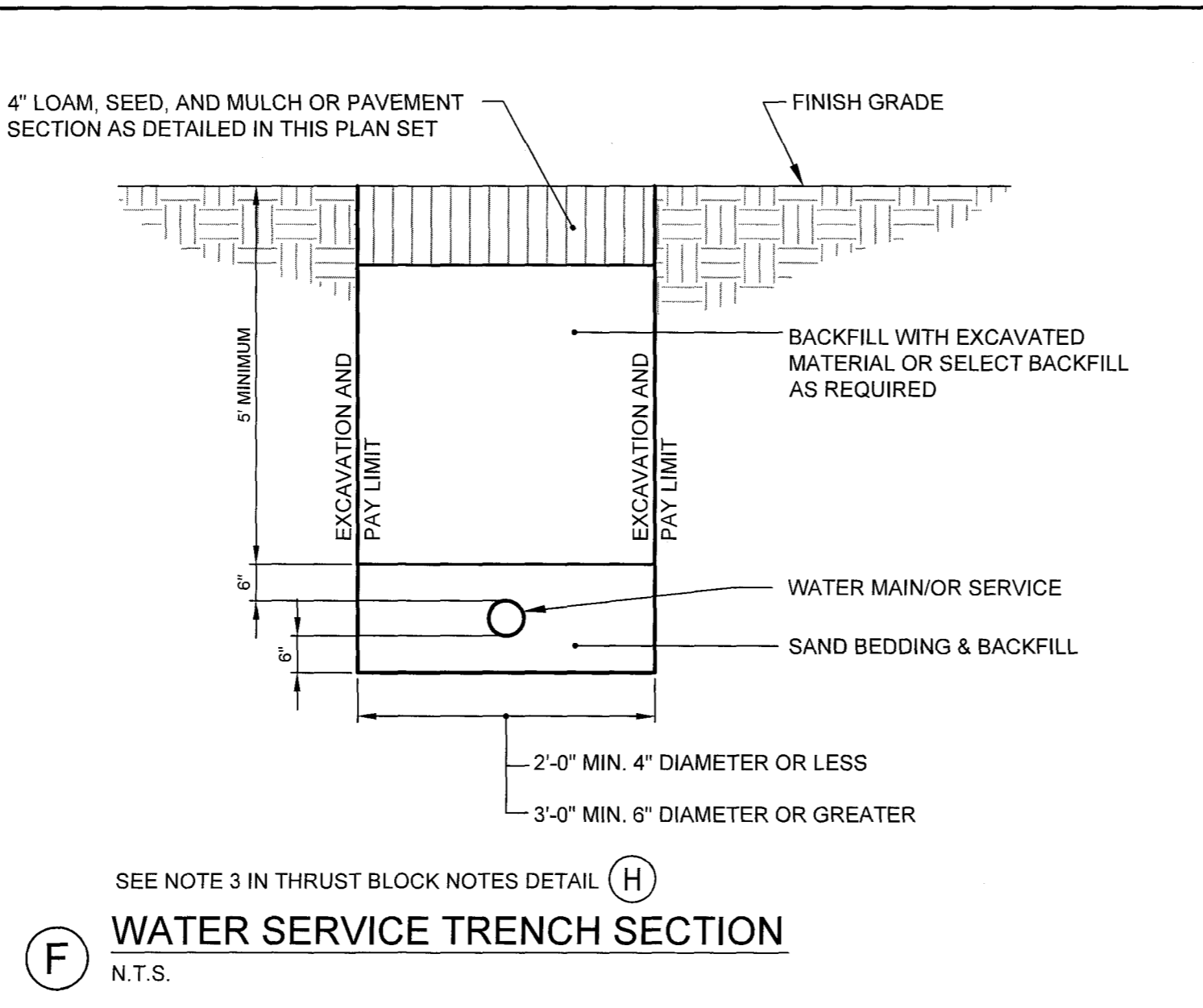
(E) PLAN VIEW OF MINOR EXCAVATION PAVEMENT REPAIR
N.T.S.



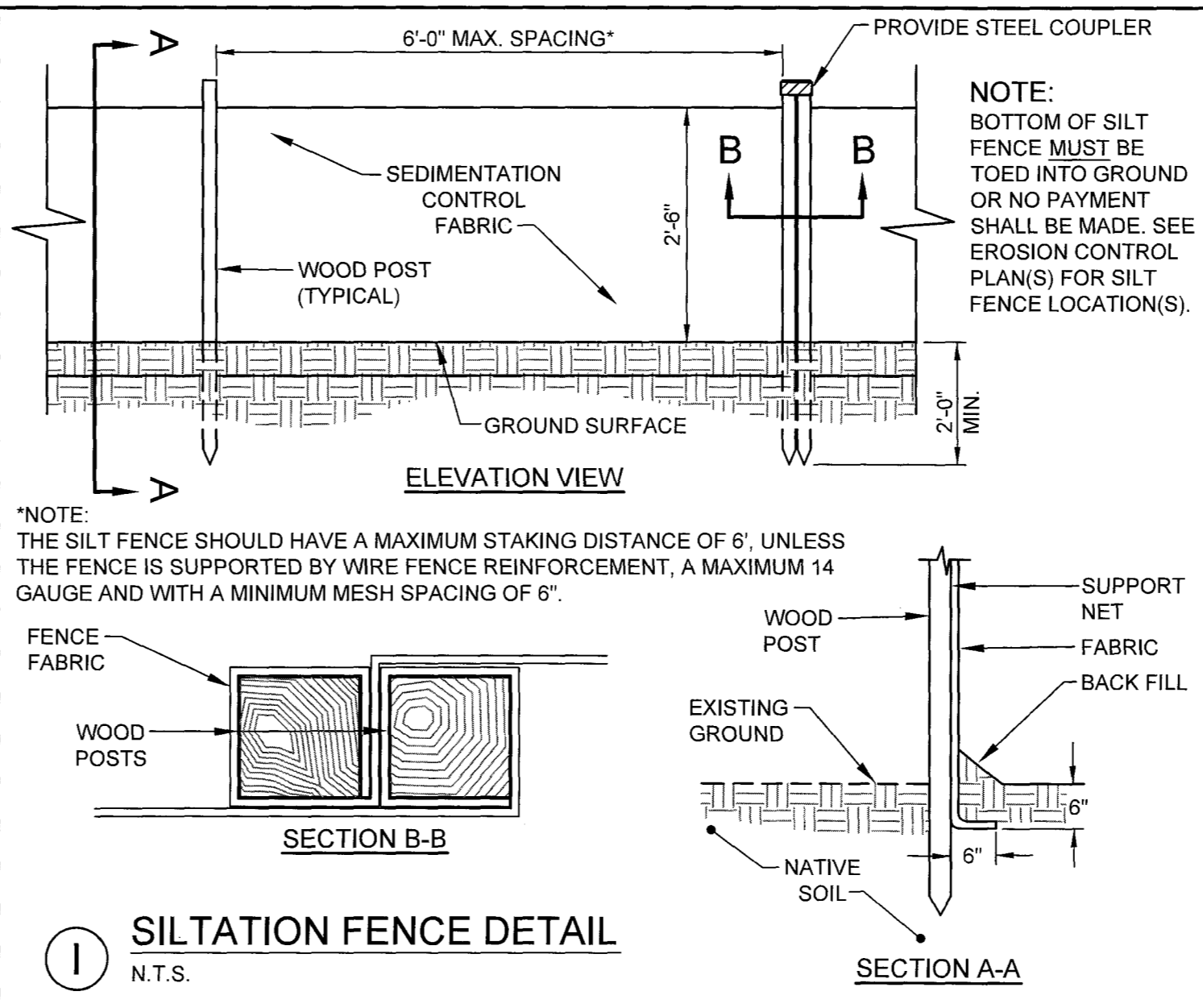
(H) THRUST BLOCK NOTES
N.T.S.



(C) GRAVEL WETLAND #2 OVERFLOW SPILLWAY
N.T.S.



(F) WATER SERVICE TRENCH SECTION
N.T.S.



(I) SILTATION FENCE DETAIL
N.T.S.

SEE SHEET 6.3 FOR OIL/WATER SEPARATOR

		PROJECT PH WARREN AVENUE, LLC COMMERCIAL SITE 421 WARREN AVENUE	ENGINEERS FST FAY, SPOFFORD & THORNDIKE, INC. ENGINEERS · PLANNERS · SCIENTISTS 778 MAIN ST, SUITE 8, SOUTH PORTLAND, ME 04106
SHEET TITLE DETAILS		DRAWN: CMW DESIGNED: SRB CHECKED: SRB FILE NAME: SP-M104-DET SHEET: C-6.2	DATE: NOVEMBER 2013 SCALE: AS NOTED JOB NO.: SP-M104
CLIENT PH WARREN AVENUE, LLC C/O PETER HOLMES 12 WILDWOOD LANE SCARBOROUGH, ME 04074		LIC. # 7429	
4 08.11.14 RELEASED TO CITY - FINAL PLANS 3 07.03.14 FINAL PLAN SUBMISSION TO CITY PER CONDITIONS OF APPROVAL 2 04.17.14 FINAL PLAN SUBMISSION TO CITY 1 02.10.14 SUBMITTED TO CITY OF PORTLAND	REVISIONS		