

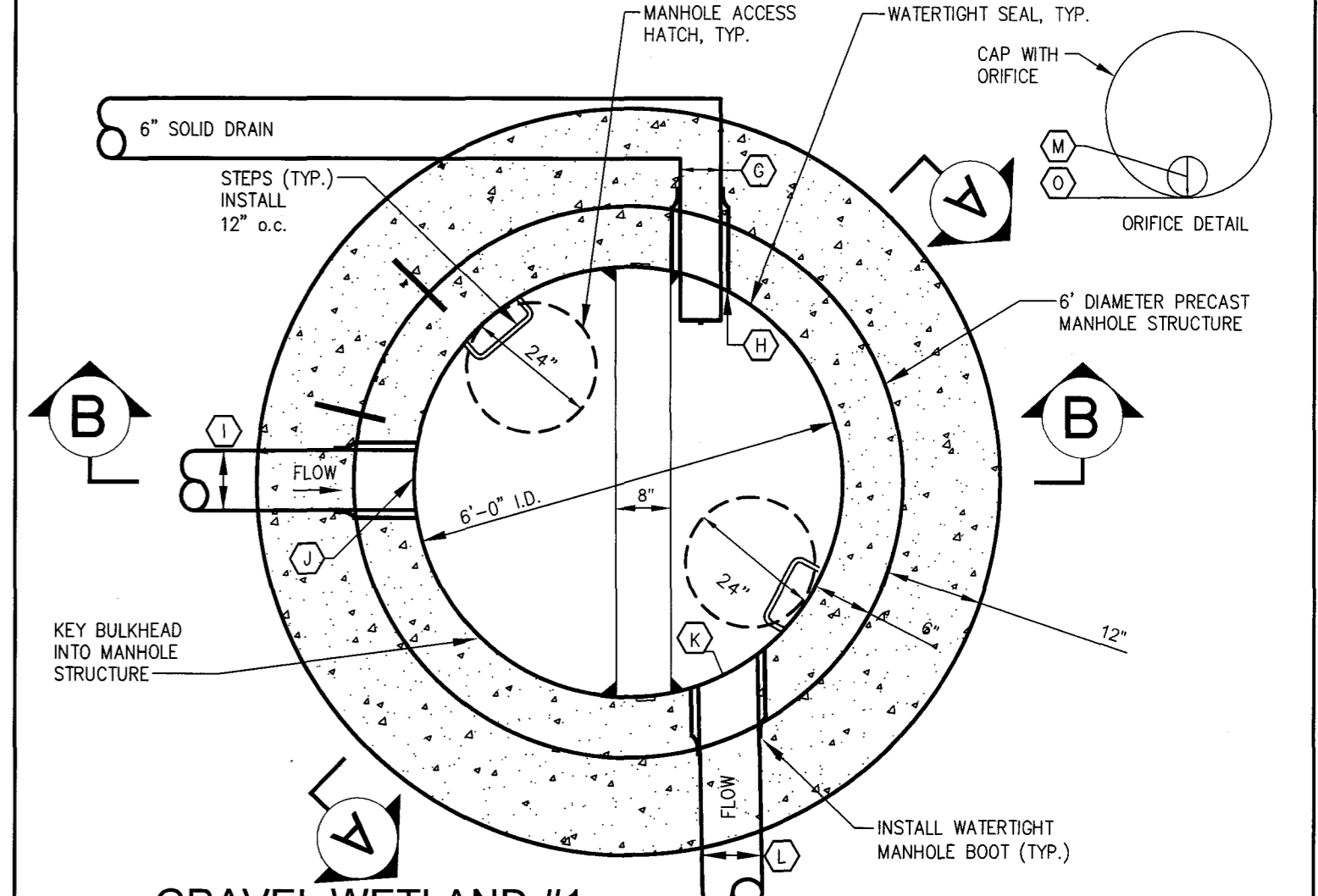
(A) TYPICAL GRAVEL WETLAND BASIN DETAIL
N.T.S.

SEE SCHEDULE A FOR DIMENSIONAL INFORMATION FOR GRAVEL WETLAND BASIN CONSTRUCTION

| SCHEDULE A - SUBSURFACE GRAVEL WETLANDS | | | |
|---|---|-------------------------|-------------------------|
| I.D. | DESCRIPTION | GRAVEL WETLAND BASIN #1 | GRAVEL WETLAND BASIN #2 |
| (A) | STORM DRAIN INLET PIPE DIA. (IN.) | N/A | N/A |
| (B) | STORM DRAIN INLET PIPE INVERT EL. | N/A | N/A |
| (C) | INLET FOREBAY PLUNGE POOL BOTTOM EL. | 68.5 | 68.40 |
| (D) | INLET FOREBAY PLUNGE POOL SPILLWAY EL. | 69.5 | 69.5 |
| (E) | GRAVEL WETLAND SURFACE EL. | 68.5 | 68.5 |
| (F) | GRAVEL WETLAND BOTTOM SUBGRADE EL. | 65.58 | 65.58 |
| (G) | 15" DIAMETER RISER RIM EL. | 69.5 | 69.5 |
| (H) | 6" DIAMETER SUBDRAIN HEADER PIPE INVERT EL. | 65.83 | 65.83 |
| (I) | 12" DIAMETER CLEANOUT RIM EL. | 68.5 | 68.5 |
| (J) | INTERNAL BERM BYPASS SPILLWAY EL. | 69.0 | 69.0 |
| (K) | INTERNAL BERM MINIMUM TOP EL. | 70.0 | 70.0 |
| (L) | HIGH LEVEL OUTLET PIPE DIAMETER (IN.) | 12" | N/A |
| (M) | HIGH LEVEL OUTLET PIPE INVERT EL. | 68.5 | N/A |
| (N) | EMERGENCY SPILLWAY CHANNEL EL. | N/A | 69.0 |
| (O) | CONTAINMENT BERM MINIMUM TOP EL. | 70.00 | 71.00 |
| (P) | STORM DRAIN OUTLET PIPE DIAMETER | 12" | 12" |

(D) SCHEDULE A SUBSURFACE GRAVEL WETLANDS
N.T.S.

USE THIS SCHEDULE FOR DETAIL A



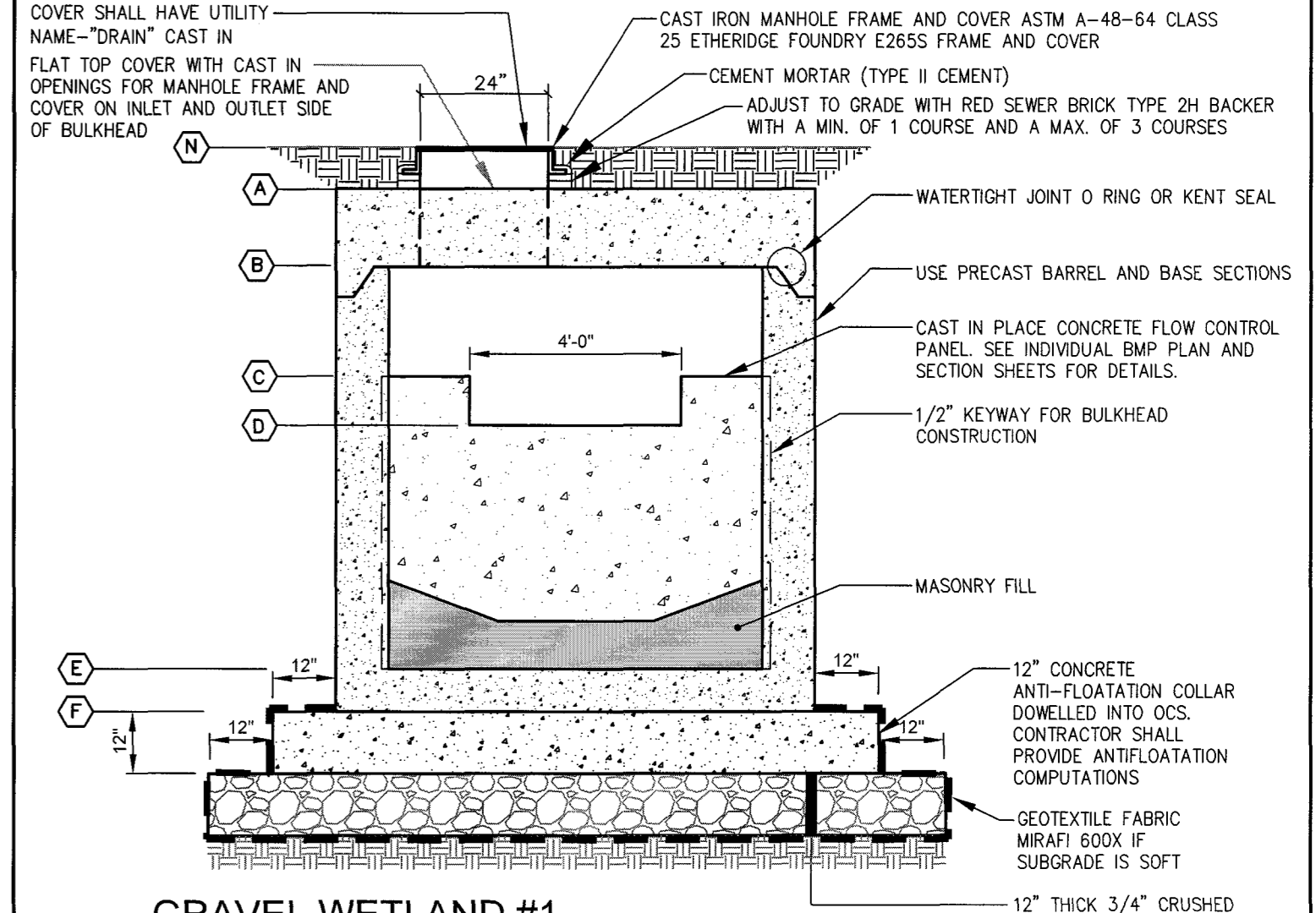
(F) GRAVEL WETLAND #1 OUTLET CONTROL STRUCTURE PLAN VIEW
N.T.S.

SEE SCHEDULE B

| SCHEDULE B OUTLET CONTROL STRUCTURE | | | |
|-------------------------------------|--------------------------------------|-------------------|-------|
| ITEM DESCRIPTION | DIMENSION/ELEVATION | | |
| | GRAVEL WETLAND #1 | GRAVEL WETLAND #2 | |
| (A) | TOP OF STRUCTURE | 71.34 | 71.00 |
| (B) | UNDERSIDE TOP SLAB | 70.67 | 70.33 |
| (C) | TOP CONCRETE BULKHEAD | 69.50 | N/A |
| (D) | WEIR ELEVATION | 69.00 | N/A |
| (E) | BOTTOM OF SUMP | 65.00 | 65.00 |
| (F) | BOTTOM OF STRUCTURE | 64.00 | 64.00 |
| (G) | UD INLET WITH ECCENTRIC ORIFICE DIA. | 6" | 6" |
| (H) | UD INLET INVERT | 65.83 | 65.83 |
| (I) | HIGH LEVEL INLET PIPE DIAMETER | 12" | - |
| (J) | HIGH LEVEL OUTLET INVERT | 68.50 | N/A |
| (K) | CONTROL STRUCTURE OUTLET PIPE INV. | 68.17 | 68.17 |
| (L) | CONT. STR. OUTLET PIPE DIAMETER | 12" | 12" |
| (M) | ORIFICE DIAMETER | 0.95" | 1.4" |
| (N) | RIM ELEVATION | 71.88 | 71.50 |
| (O) | ORIFICE INVERT | 65.83 | 65.83 |

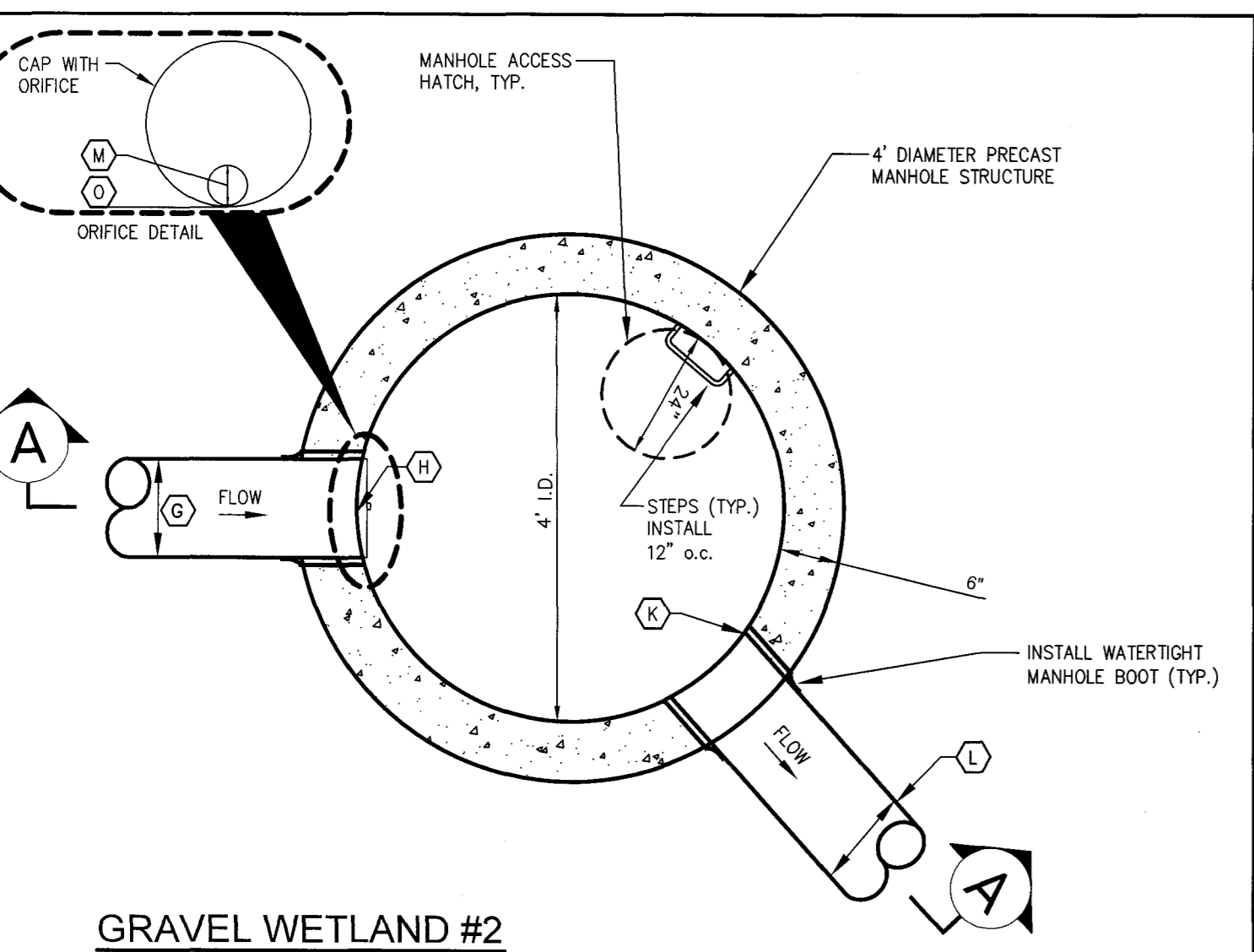
(E) SCHEDULE B OUTLET CONTROL STRUCTURE
N.T.S.

USE THIS SCHEDULE FOR DETAILS B, C, F, G, H



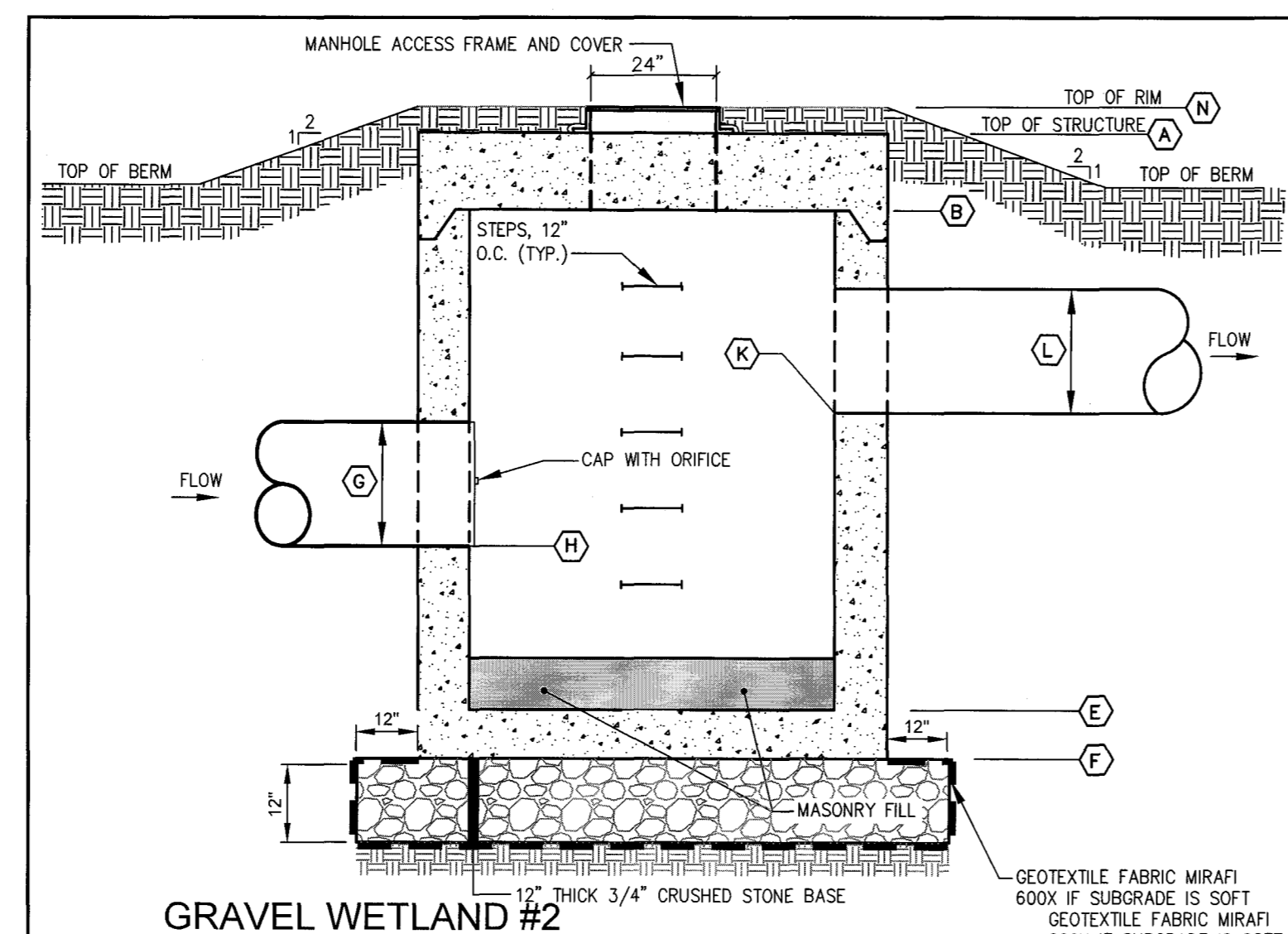
(G) GRAVEL WETLAND #1 OUTLET CONTROL STRUCTURE SECTION A-A
N.T.S.

SEE SCHEDULE B



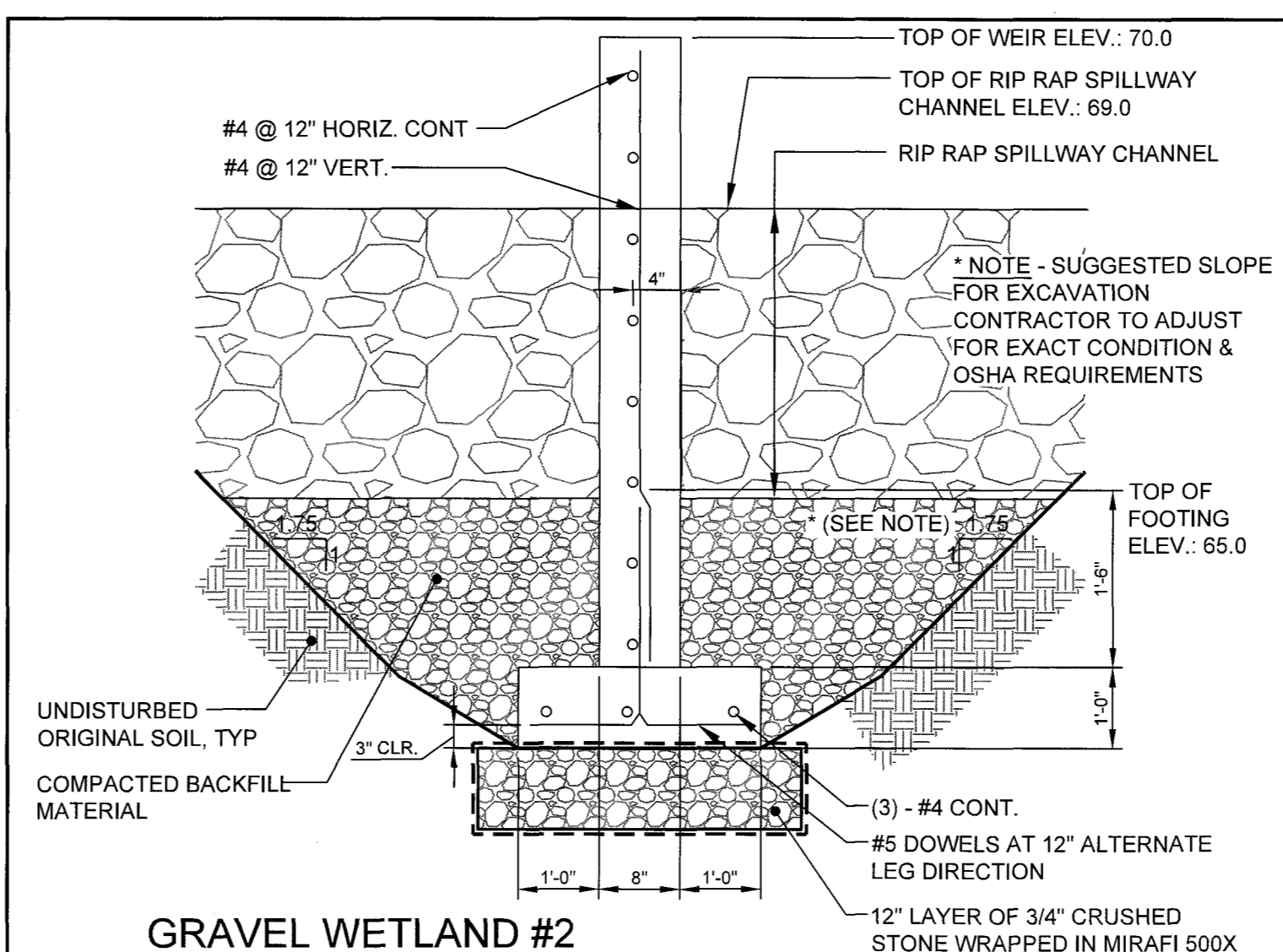
(B) GRAVEL WETLAND #2 OUTLET CONTROL STRUCTURE PLAN VIEW
N.T.S.

SEE SCHEDULE B

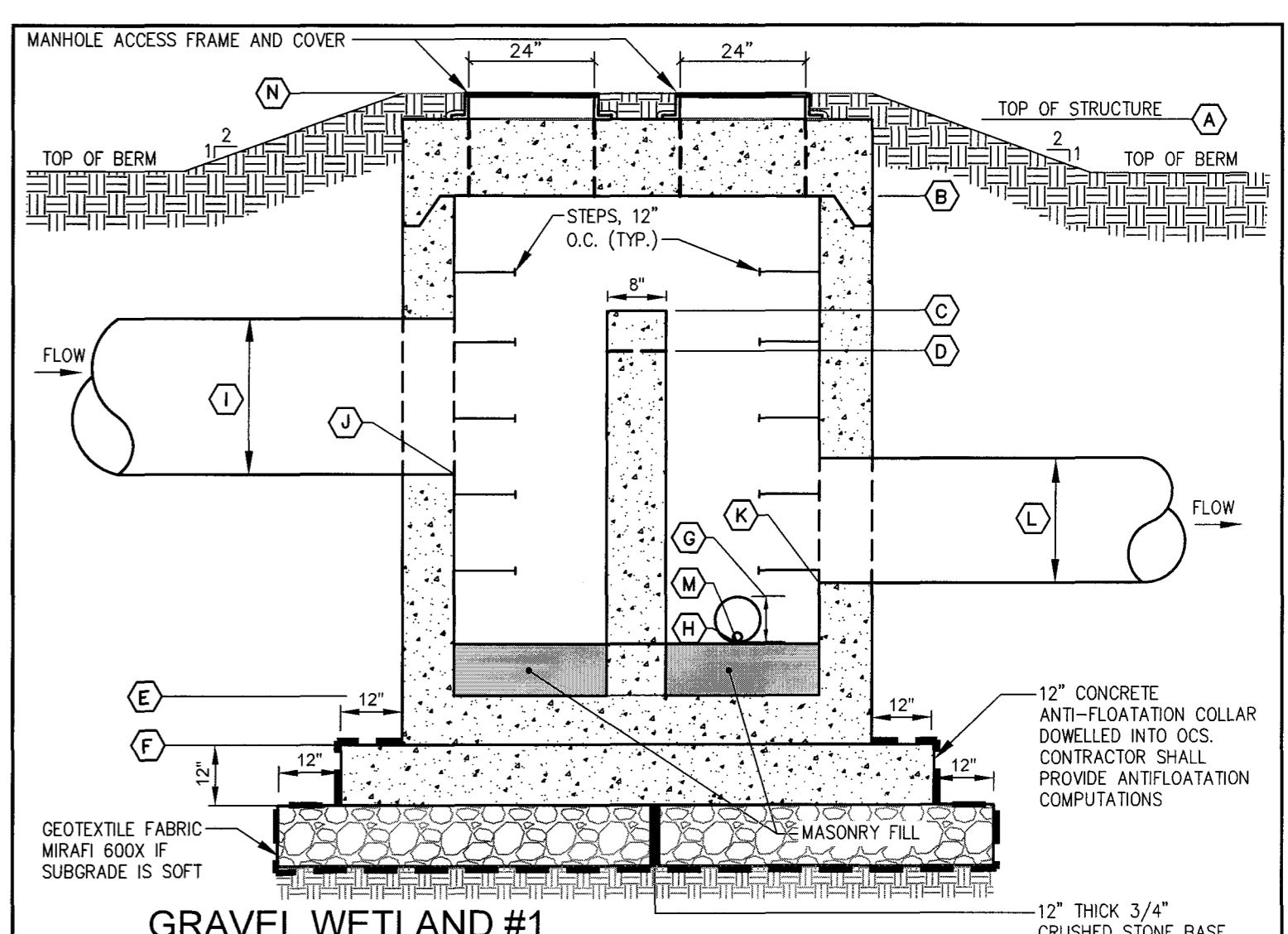


(C) GRAVEL WETLAND #2 OUTLET CONTROL STRUCTURE SECTION A-A
N.T.S.

SEE SCHEDULE B



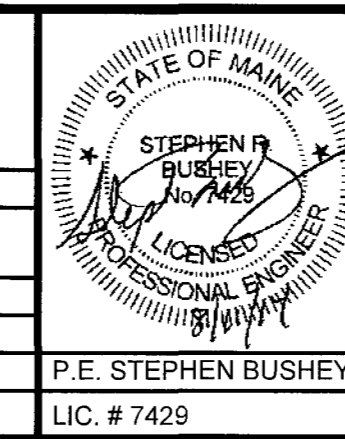
(I) GRAVEL WETLAND #2 FLOW CONTROL PANEL WEIR SECTION
N.T.S. (SEE DETAIL 'C' ON SHEET C-6.2 FOR WALL ELEVATION DETAIL)



(H) GRAVEL WETLAND #1 OUTLET CONTROL STRUCTURE SECTION A-A
N.T.S.

SEE SCHEDULE B

| REV | DATE | DESCRIPTION | REVISIONS |
|-----|----------|--|-----------|
| 4 | 08.11.14 | RELEASED TO CITY - FINAL PLANS | |
| 3 | 07.03.14 | FINAL PLAN SUBMISSION TO CITY PER CONDITIONS OF APPROVAL | |
| 2 | 04.17.14 | FINAL PLAN SUBMISSION TO CITY | |
| 1 | 02.10.14 | SUBMITTED TO CITY OF PORTLAND | |
| | | DESCRIPTION | |



| | |
|-------------|--|
| PROJECT | PH WARREN AVENUE, LLC COMMERCIAL SITE 421 WARREN AVENUE |
| SHEET TITLE | GRAVEL WETLAND DETAILS |
| CLIENT | PH WARREN AVENUE, LLC C/O PETER HOLMES 12 WILDWOOD LANE SCARBOROUGH, ME 04074 |

| | |
|------------|--|
| ENGINEERS | FST FAY, SPOFFORD & THORNDIKE, INC. ENGINEERS · PLANNERS · SCIENTISTS 778 MAIN ST, SUITE 8, SOUTH PORTLAND, ME 04106 |
| DRAWN: | CMW |
| DESIGNED: | SRB |
| CHECKED: | SRB |
| FILE NAME: | SP-M104-DET |
| SHEET | C-4.3 |