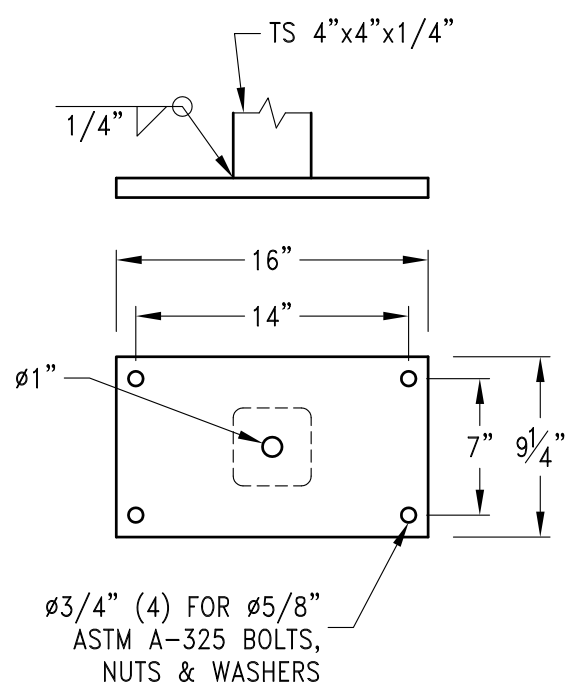
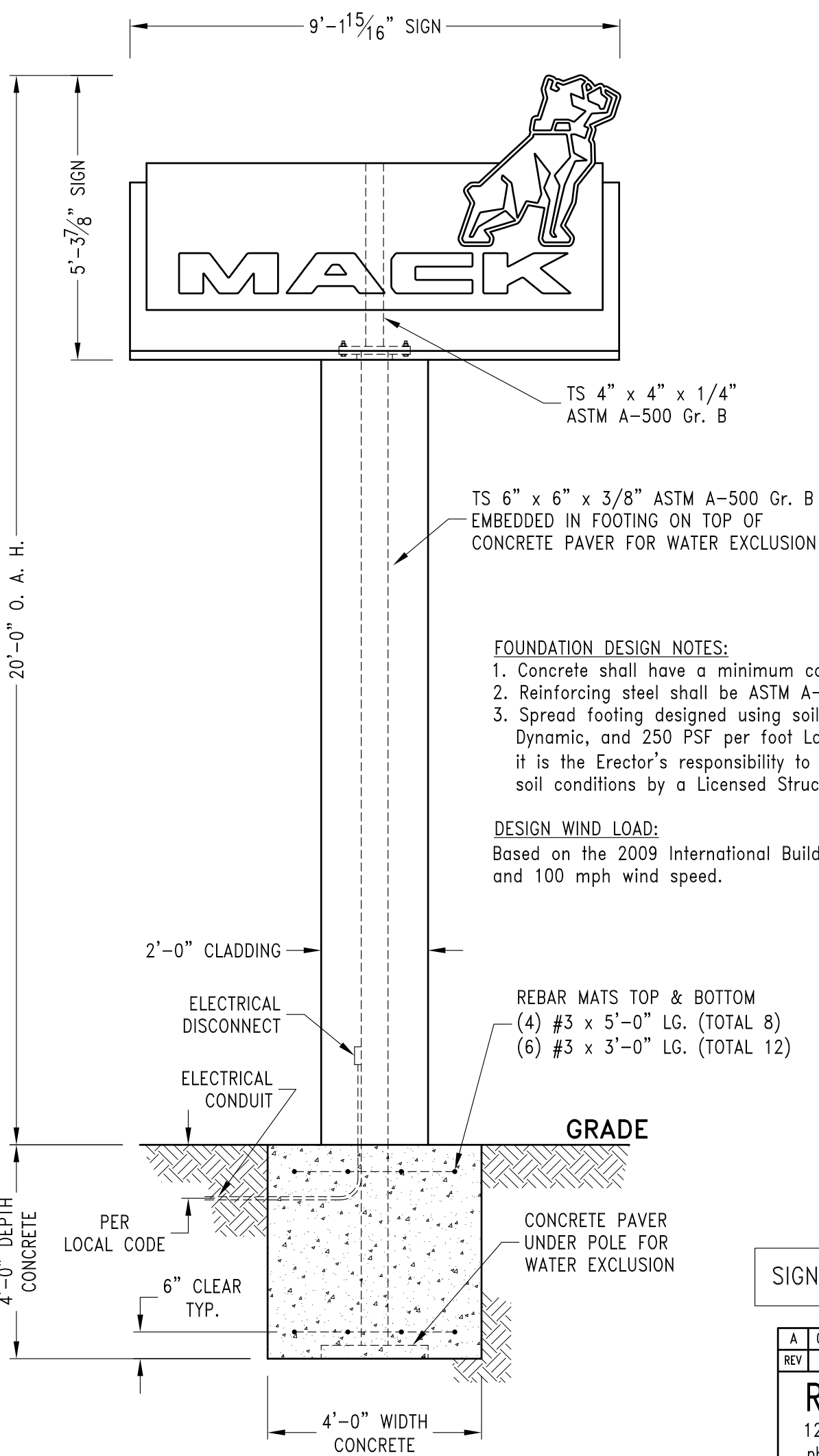


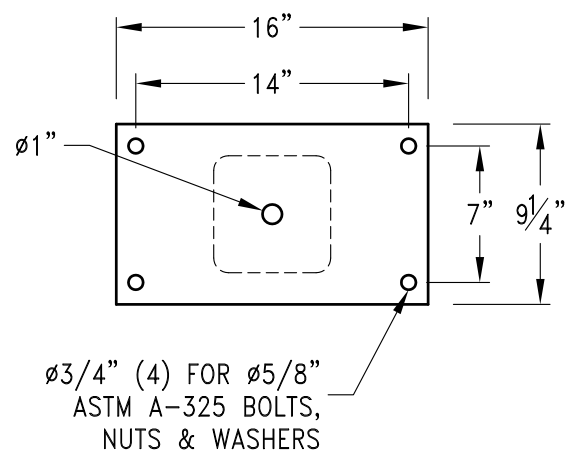
**PLAN VIEW**  
 QTY. CONCRETE: 3.6 CU. YDS.



**SIGN MOUNTING PLATE DETAIL**  
 1" ASTM A-36 STEEL



**ELEVATION VIEW**



**POLE TOP PLATE DETAIL**  
 3/4" ASTM A-36 STEEL

**FOUNDATION DESIGN NOTES:**

1. Concrete shall have a minimum compressive strength of 3000 PSI at 28 days.
2. Reinforcing steel shall be ASTM A-615 Gr. 60.
3. Spread footing designed using soil bearing forces of 2000 PSF Static, 2660 PSF Dynamic, and 250 PSF per foot Lateral. If these soil conditions do not exist, it is the Erector's responsibility to have a new base designed for the existing soil conditions by a Licensed Structural Engineer.

**DESIGN WIND LOAD:**

Based on the 2009 International Building Code (ASCE 7-05) using Exposure C and 100 mph wind speed.

SIGN TYPE: NMP-40 PYLON

SITE:  
 Mack

A	01 Jul 14	RELEASED FOR REVIEW	J. HOGAN
REV	DATE	DESCRIPTION	APPROVED
<b>Robert-James &amp; Associates, Inc.</b> 12255 West 187th Street, Mokena Illinois 60448-9737 phone: 708-479-8385 fax: 708-479-8395 email: rja37@comcast.net			
TITLE <b>20'-0" OAH DIRECT BURY CLADDDED SINGLE POLE PYLON FOR MACK ID SIGN</b>			
DRAWN BY	D. MUNNS	DATE	01 Jul 14
CHECKED BY	J. HOGAN	DATE	01 Jul 14
SCALE	NONE	DRAWING NUMBER	1406147
SHEET	1 OF 1	REV.	A