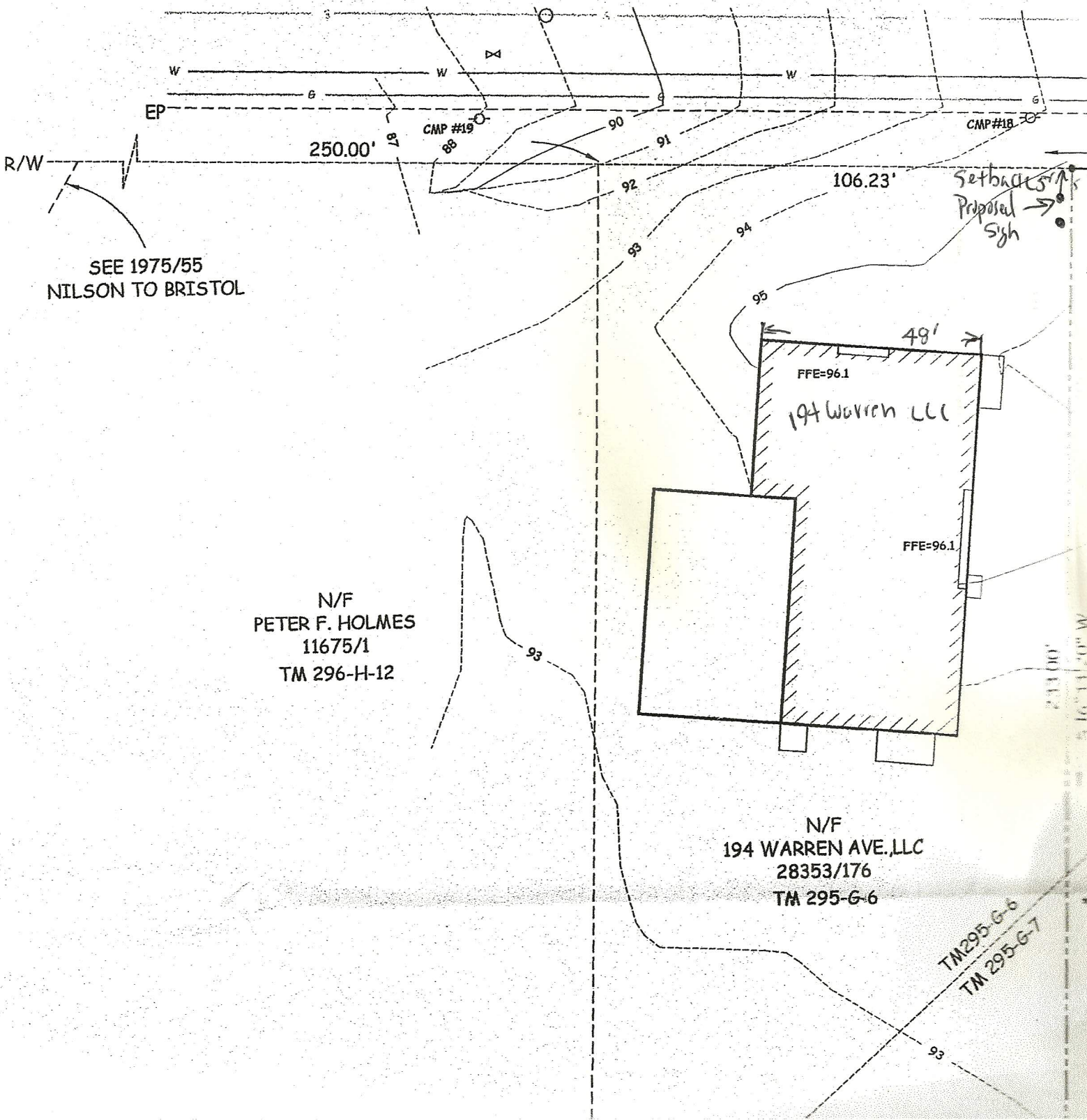


R/W

EP

WARREN AVE

TO RIVERSIDE ST



SEE 1975/55  
NILSON TO BRISTOL

N/F  
PETER F. HOLMES  
11675/1  
TM 296-H-12

N/F  
194 WARREN AVE, LLC  
28353/176  
TM 295-G-6

TM 295-G-6  
TM 295-G-7

Setbacks  
Proposed Sign