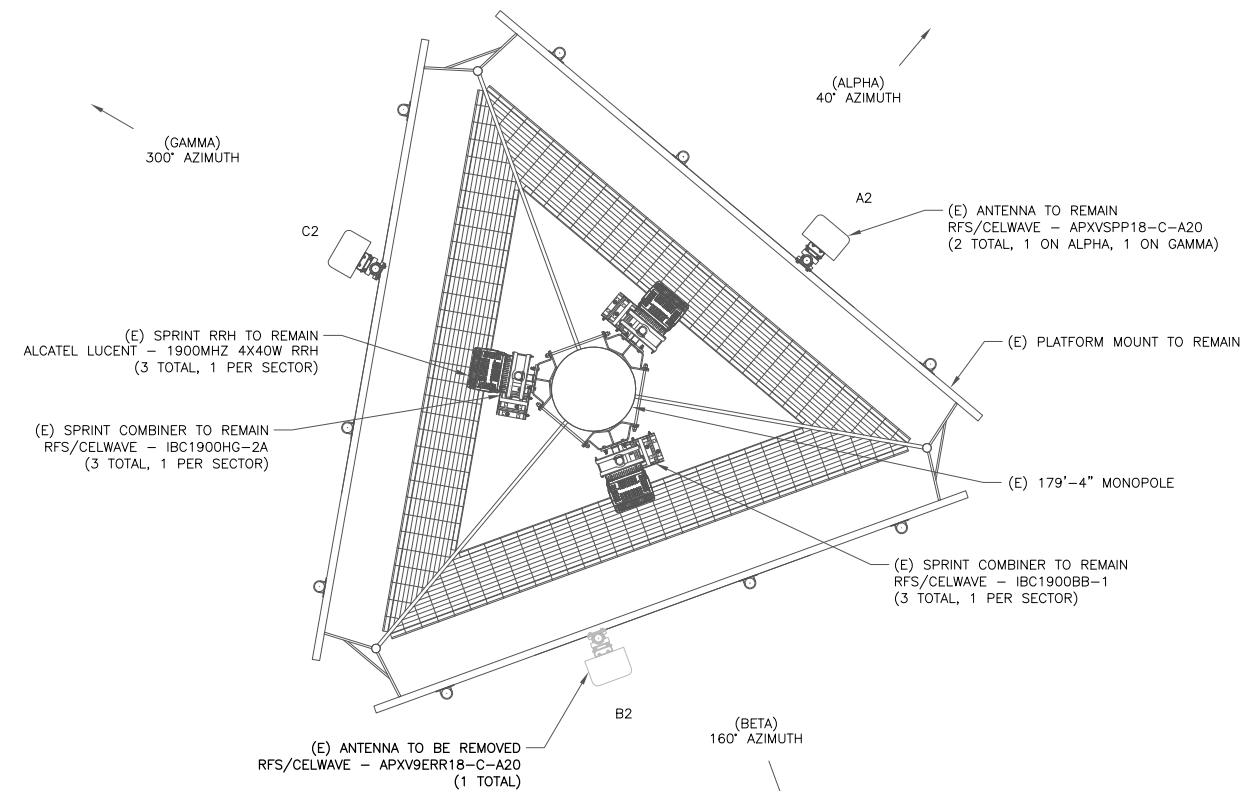
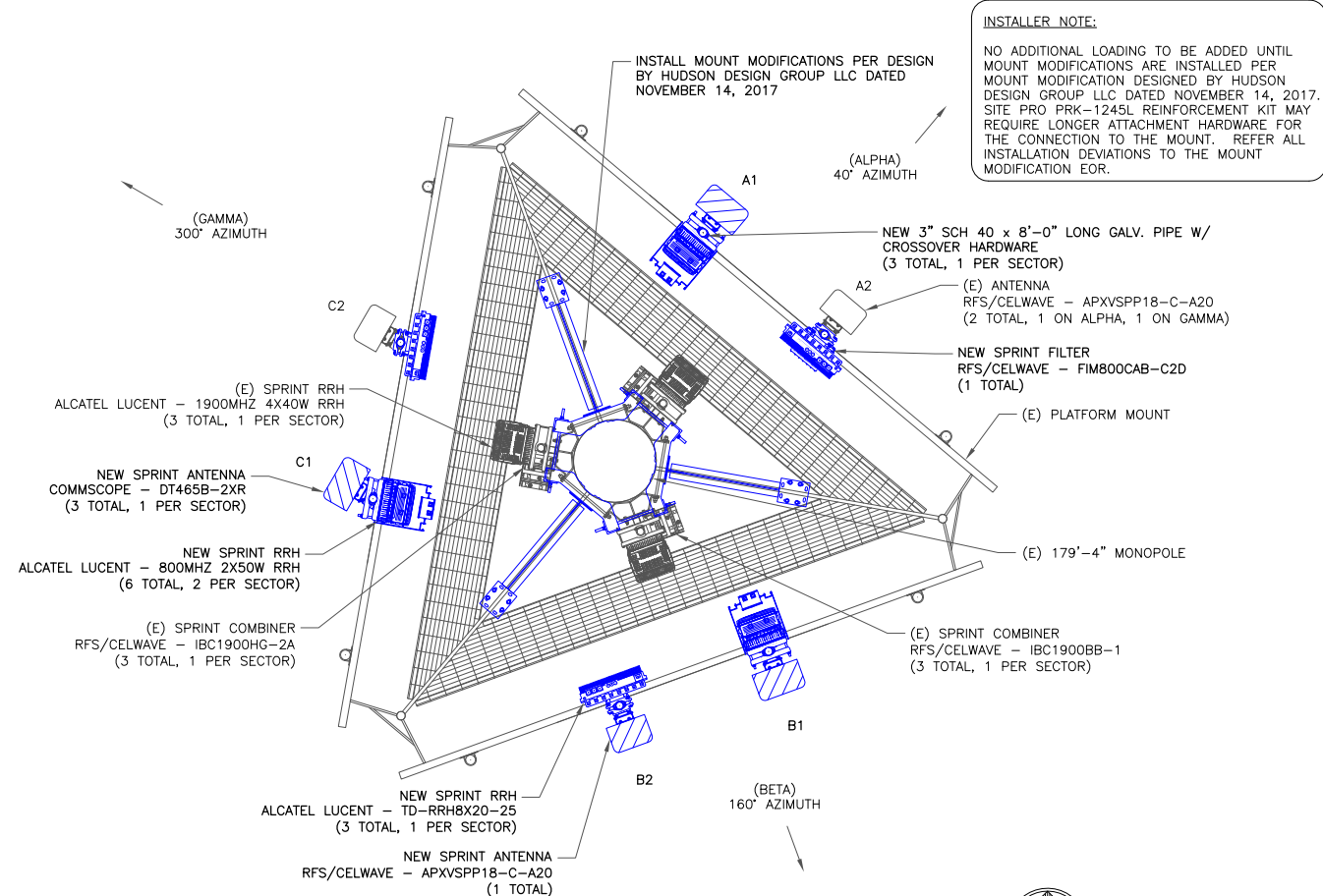


1 FINAL ELEVATION
SCALE: NOT TO SCALE



2 EXISTING ANTENNA LAYOUT
SCALE: NOT TO SCALE



3 FINAL ANTENNA LAYOUT
SCALE: NOT TO SCALE

Sprint
6391 SPRINT PARKWAY
OVERLAND PARK, KS 66251-2650

CROWN CASTLE
3 CORPORATE PARK DRIVE, SUITE 101
CLIFTON PARK, NY 12065

SPRINT SITE NUMBER:
NM03XC066

BU #: **878782**
PORTLAND WARREN AVE

188 WARREN AVE
PORTLAND, ME 04103

EXISTING 179'-4" MONOPOLE

ISSUED FOR:

REV	DATE	DRWN	DESCRIPTION	DES./QA
A	12/21/17	AK	PRELIMINARY	LMR
0	01/26/18	AK	CONSTRUCTION	AJF

DocuSigned by:
Andrew Joseph Fandozzi III
BAD606DD0024F4

STATE OF MAINE
ANDREW JOSEPH FANDOZZI III
No. 13820
LICENSED PROFESSIONAL ENGINEER

1/26/2018 | 4:04:17 PM EST

IT IS A VIOLATION OF LAW FOR ANY PERSON, UNLESS THEY ARE ACTING UNDER THE DIRECTION OF A LICENSED PROFESSIONAL ENGINEER, TO ALTER THIS DOCUMENT.

SHEET NUMBER: **C-2** REVISION: **0**