

180.0 FT

140.0 FT

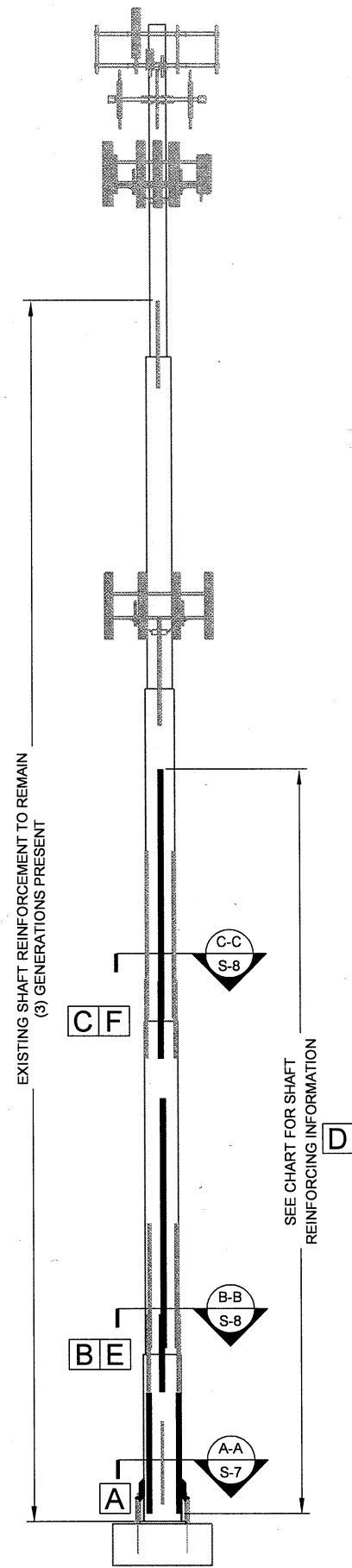
100.0 FT

60.0 FT

20.0 FT

0.0 FT

TOP OF BASE PLATE



POLE ELEVATION

POLE SPECIFICATIONS	
POLE SHAPE TYPE:	ROUND
SHAFT STEEL:	ASTM A36
BASE PL STEEL:	ASTM A36 (36 KSI)

POLE MAINTENANCE SCHEDULE			
	ELEVATION (FT)	MODIFICATION	REFERENCE SHEET
A	0.0	ADD (4) EXTENSION PLATES TO EXISTING ANCHOR ROD BRACKETS	S-7
B	20.0	REMOVE (3) EXISTING BRIDGE STIFFENERS AT 25°, 135°, & 245°	S-6
C	60.0	REMOVE (3) EXISTING BRIDGE STIFFENERS AT 25°, 135°, & 245°	S-6
D	0.5 - 90.0	INSTALL NEW FLAT PLATE REINFORCEMENT	S-6
E	20.0	INSTALL (3) NEW BRIDGE STIFFENERS AT 25°, 135°, & 245°	S-8
F	60.0	INSTALL (3) NEW BRIDGE STIFFENERS AT 25°, 135°, & 245°	S-8

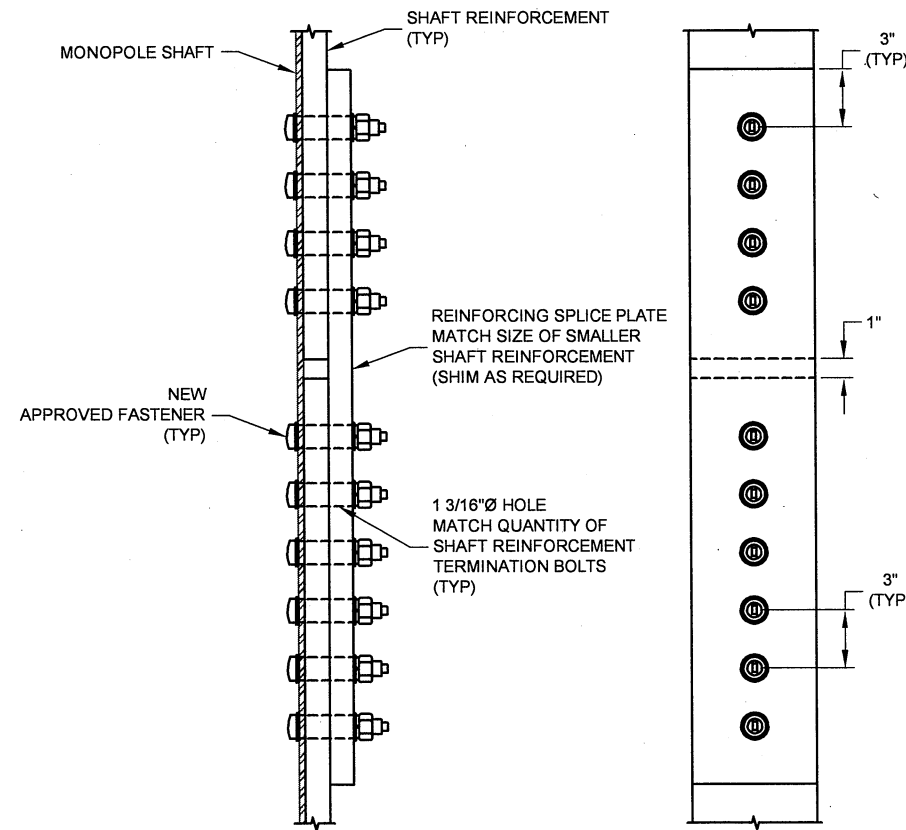
SHAFT SECTION DATA					
SHAFT SECTION	SECTION LENGTH (FT)	PLATE THICKNESS (IN)	LAP SPLICE (IN)	DIAMETER ACROSS FLATS (IN)	
				@ TOP	@ BOTTOM
1	40.00	0.375	0	24.00	24.00
2	40.00	0.500	0	36.00	36.00
3	40.00	0.500	0	42.00	42.00
4	40.00	0.625	0	48.00	48.00
5	20.00	0.625	0	54.00	54.00

NOTE: DIMENSIONS SHOWN DO NOT INCLUDE GALVANIZING TOLERANCES

CCI FLAT PLATE (65 KSI) REINFORCING SCHEDULE										
BOTTOM ELEVATION	TOP ELEVATION	PART NUMBER	FLAT / DEGREES (°)	TERMINATION BOLTS (BOTTOM)	TERMINATION BOLTS (TOP)	MAX INTERMEDIATE BOLT SPACING	BOLT QUANTITY PER PLATE	STEEL WEIGHT PER PLATE (BLACK)	TOTAL BOLT QUANTITY	TOTAL STEEL WEIGHT (BLACK)
0'-5"	15'-5"	CCI-SFP-08512515	65, 204, 305	15	15	1'-5"	35	541.9	105	1625.7
20'-0"	50'-0"	CCI-CFP-08512530	25, 135, 245	20	15	1'-4"	50	1083.8	150	3251.4
60'-0"	90'-0"	CCI-CFP-08512530	25, 135, 245	20	15	1'-4"	50	1083.8	150	3251.4
								TOTAL	405	8128.5

NOTES FOR CROWN REINFORCING (65 KSI) MATERIAL:

- DO NOT WELD WITHOUT APPROVAL FROM THE EOR.
- SHIMS FOR MONOPOLE REINFORCEMENT MEMBER SHALL BE REQUIRED WHERE GAPS BETWEEN THE POLE SHAFT AND REINFORCING MEMBER EXIST AT FASTENER LOCATIONS. FOR INTERMEDIATE CONNECTIONS, THE MINIMUM SHIM LENGTH AND WIDTH SHALL BE THE WIDTH OF THE REINFORCING MEMBER. FOR TERMINATION CONNECTIONS, A CONTINUOUS SHIM PLATE (PREFERRED) OR EQUIVALENT INDIVIDUAL SHIM PLATES THE WIDTH OF THE REINFORCING MEMBER MAY BE USED. SHIM THICKNESS SHALL BE NO LESS THAN 1/16". STACKING OF SHIMS IS PERMITTED.
- ALL FLAT PLATE REINFORCEMENT IS TO BE INSTALLED CENTERED ON ITS DESIGNATED FLAT, UNO.
- SEE CROWN CASTLE APPROVED REINFORCEMENTS COMPONENTS CATALOG FOR PART DETAILS.
- ON MULTISIDED POLES, EXISTING SAFETY CLIMB IS CONSIDERED FLAT 1 THEN FLATS ARE NUMBERED COUNTER CLOCKWISE.
- CLIMBING PEGS TO BE RELOCATED AS REQUIRED.



REINFORCING SPLICE PLATE DETAIL

(STEEL GRADE A572-65)

			<p>THIS DRAWING IS COPYRIGHTED AND IS THE SOLE PROPERTY OF CROWN CASTLE. IT IS PRODUCED SOLELY FOR USE BY CROWN CASTLE AND ITS AFFILIATES. REPRODUCTION OR USE OF THIS DRAWING AND/OR THE INFORMATION CONTAINED IN IT IS FORBIDDEN WITHOUT THE WRITTEN PERMISSION OF CROWN CASTLE.</p>
NO.	DATE	DESCRIPTION	
REVISIONS			
02-22-2016			
			<p>SITE NAME: PORTLAND WARREN AVE BU NUMBER: 878782 WO NUMBER: 1183035 SITE ADDRESS: WARREN AVE PORTLAND, ME 04103 CUMBERLAND COUNTY, USA</p>
			<p>ENG/QA BY: NCM DATE: 2/3/16 DFT BY: CH DATE: 2/19/16 DFT/QA BY: SL DATE: 2/19/16 APRV'D BY: NCM DATE: 2/19/16</p>
			<p>SCALE: N.T.S.</p>
			<p>POLE MAINTENANCE SCHEDULE</p>
			<p>S-6</p>
			<p>REV 0</p>