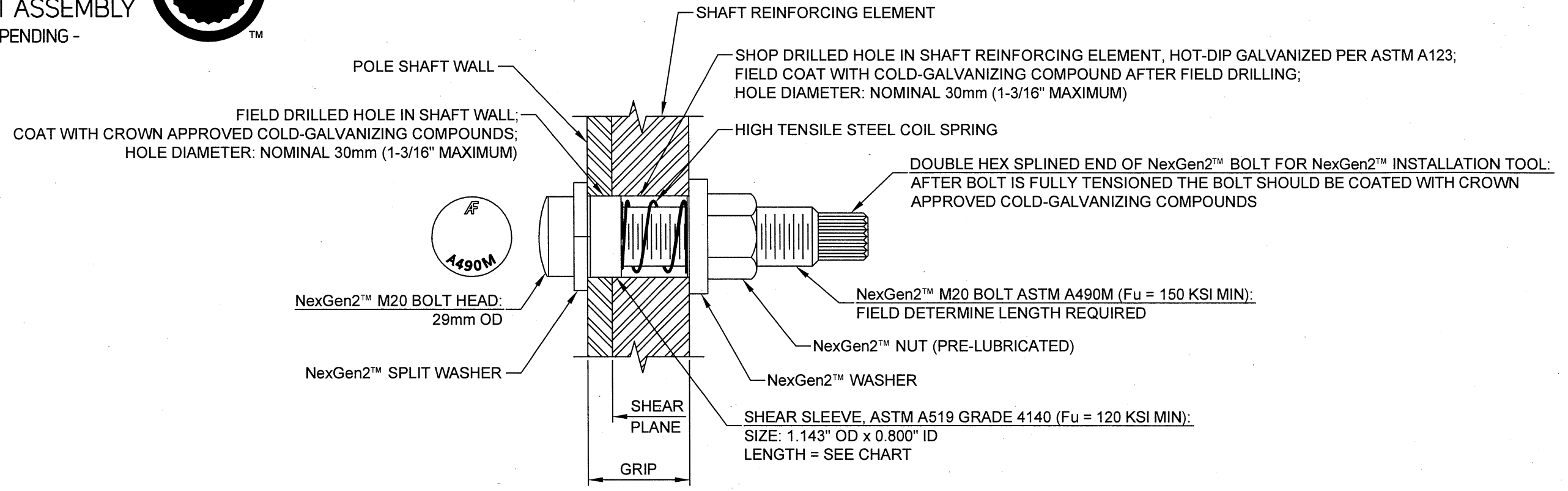




INTERIOR OF POLE SHAFT EXTERIOR OF POLE SHAFT



TYPICAL **NG2** BOLT DETAIL

PART NUMBER	BOLT LENGTH	SLEEVE LENGTH	MIN GRIP RANGE	MAX GRIP RANGE
M20x36	M20x95	11/16"	15/16"	1-7/16"
M20x48	M20x95	1-3/16"	1-7/16"	1-7/8"
M20x57	M20x95	1-5/8"	1-7/8"	2-1/4"
M20x68	M20x135	2"	2-1/4"	2-11/16"
M20x96	M20x135	2-7/16"	2-11/16"	3-3/4"
M20x127	M20x165	3"	3-3/4"	5"
M20x212	M20x250	4"	5"	8-5/16"

MANUFACTURER:
 ALLFASTENERS
 15401 COMMERCE PARK DRIVE, BROOKPARK, OHIO, USA 44142
 PHONE: 440-232-6060
 WEBSITE: WWW.ALLFASTENERS.COM

NOTE: ALL SHOP AND FIELD DRILLED HOLES SHALL BE NOMINAL 30mm DIAMETER. THE MAXIMUM HOLE DIAMETER PERMITTED IS 1-3/16".

NOTE: NexGen2™ COMPLETE ASSEMBLY SHALL BE MAGNI 565 COATED PER ASTM F2833 AS APPROPRIATE.

NOTE: INSTALL PER MANUFACTURER'S INSTRUCTIONS.

THIS DRAWING IS COPYRIGHTED AND IS THE SOLE PROPERTY OF CROWN CASTLE. IT IS PRODUCED SOLELY FOR USE BY CROWN CASTLE AND ITS AFFILIATES. REPRODUCTION OR USE OF THIS DRAWING AND/OR THE INFORMATION CONTAINED IN IT IS FORBIDDEN WITHOUT THE WRITTEN PERMISSION OF CROWN CASTLE.				
NO.	DATE	DESCRIPTION	BY	
REVISIONS				
			SITE NAME: PORTLAND WARREN AVE BU NUMBER: 878782 WO NUMBER: 1183035 SITE ADDRESS: WARREN AVE PORTLAND, ME 04103 CUMBERLAND COUNTY, USA	
ENG/QA BY: NCM			DATE: 2/3/16	
DFT BY: CH			DATE: 2/19/16	
DFT/QA BY: SL			DATE: 2/19/16	
APRVD BY: NCM			DATE: 2/19/16	
SCALE: N.T.S.				
02-22-2016				
NexGen2™ BOLT SPECIFICATIONS AND TIGHTENING PROCEDURE				
S-4				REV
				0