

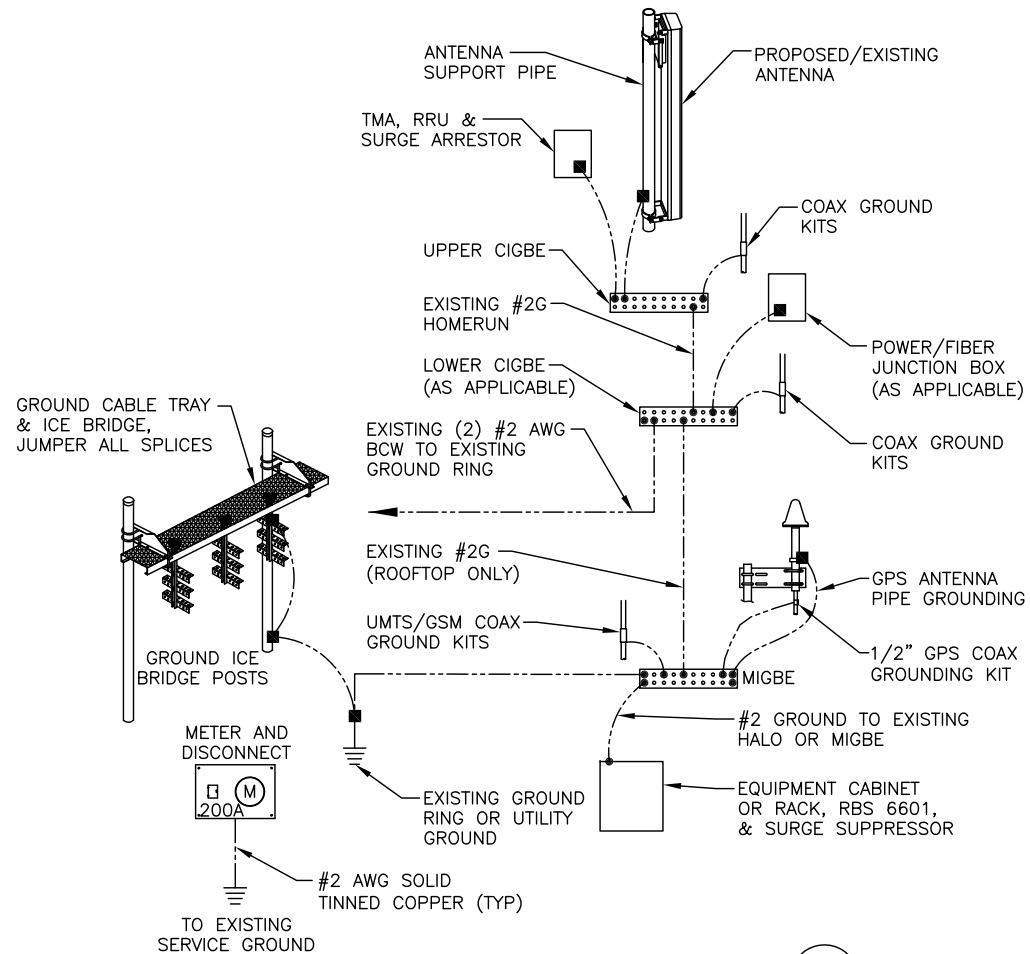
NOTE:

1. DO NOT INSTALL CABLE GROUND KIT AT A BEND AND ALWAYS DIRECT GROUND WIRE DOWN TO CIGBE.

**GROUND WIRE TO GROUND BAR CONNECTION DETAIL**

SCALE: N.T.S

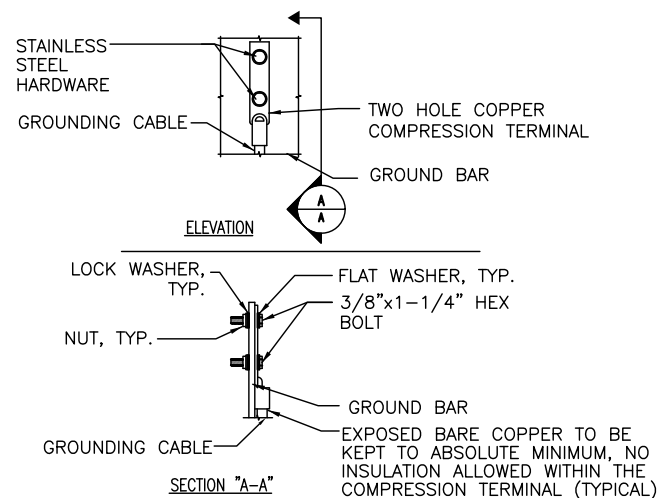
1  
G-1



**GROUNDING RISER DIAGRAM**

SCALE: N.T.S

2  
G-1



- NOTE:
1. "DOUBLING UP" OR "STACKING" OF CONNECTION IS NOT PERMITTED.
  2. OXIDE INHIBITING COMPOUND TO BE USED AT ALL LOCATIONS.
  3. CADWELD DOWNLEADS FROM UPPER EGB, LOWER EGB, AND MGB.

**TYPICAL GROUND BAR CONNECTION DETAIL**

SCALE: N.T.S

3  
G-1

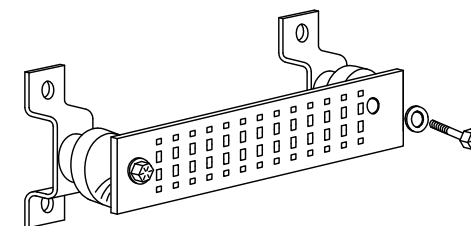
EACH GROUND CONDUCTOR TERMINATING ON ANY GROUND BAR SHALL HAVE AN IDENTIFICATION TAG ATTACHED AT EACH END THAT WILL IDENTIFY ITS ORIGIN AND DESTINATION.

**SECTION "P" - SURGE PRODUCERS**

- CABLE ENTRY PORTS (HATCH PLATES) (#2)
- GENERATOR FRAMEWORK (IF AVAILABLE) (#2)
- TELCO GROUND BAR
- COMMERCIAL POWER COMMON NEUTRAL/GROUND BOND (#2)
- +24V POWER SUPPLY RETURN BAR (#2)
- 48V POWER SUPPLY RETURN BAR (#2)
- RECTIFIER FRAMES.

**SECTION "A" - SURGE ABSORBERS**

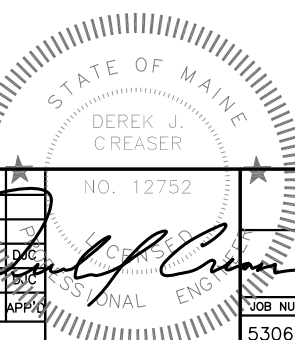
- INTERIOR GROUND RING (#2)
- EXTERNAL EARTH GROUND FIELD (BURIED GROUND RING) (#2)
- METALLIC COLD WATER PIPE (IF AVAILABLE) (#2)
- BUILDING STEEL (IF AVAILABLE) (#2)



**GROUND BAR - DETAIL**

SCALE: N.T.S

4  
G-1



**Hudson Design Group**  
 1600 OSGOOD STREET  
 BUILDING 20 NORTH, SUITE 3090  
 N. ANDOVER, MA 01845  
 TEL: (978) 557-5553  
 FAX: (978) 336-5586

**SAI**  
 27 NORTHWESTERN DR.  
 SALEM, NH 03079

**SITE NUMBER: ME5306**  
**SITE NAME: SPRINT PORTLAND**  
**CROWN ID: 878782**  
 188 WARREN AVENUE  
 PORTLAND, ME 04103  
 CUMBERLAND COUNTY

**at&t**  
 550 COCHITUATE ROAD  
 FRMINGHAM, MA 01701

NO.	DATE	REVISIONS	BY	CHK	APP
1	03/02/16	ISSUED FOR CONSTRUCTION	RB	AT	DJC
A	12/17/15	ISSUED FOR REVIEW	RB	AT	DJC

SCALE: AS SHOWN    DESIGNED BY: AT    DRAWN BY: RB

AT&T	
GROUNDING DETAILS (LTE 4C)	
JOB NUMBER	DRAWING NUMBER
5306.00	G-1
REV	1