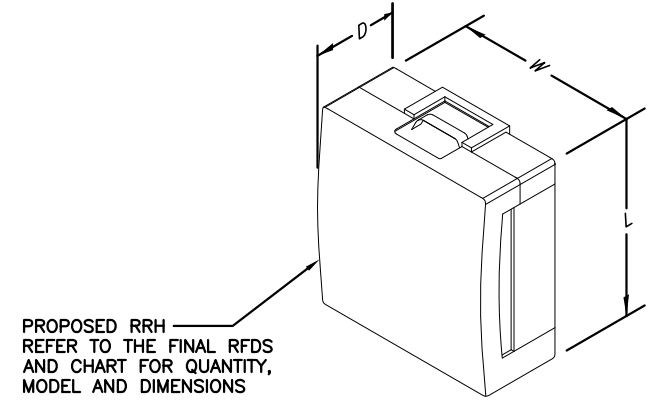


**NOTE:**  
REFER TO THE FINAL RF DATA SHEET FOR FINAL ANTENNA SETTINGS.

**NOTE:**  
ALL ANTENNAS AND COAX TO BE INSTALLED IN ACCORDANCE WITH STRUCTURAL ANALYSIS PROVIDED BY CROWN CASTLE AND FINAL AT&T RF DATA SHEET.

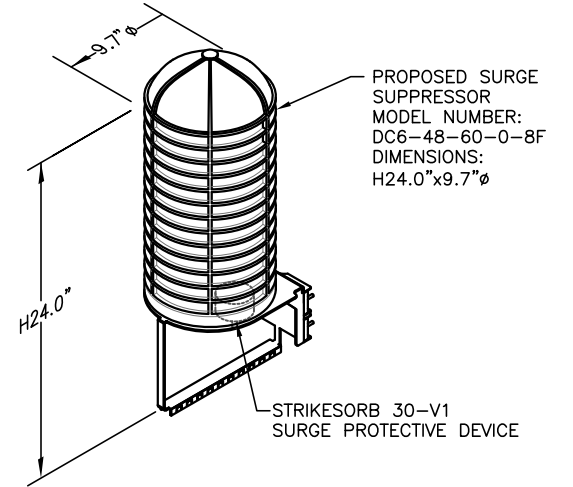


PROPOSED RRH  
REFER TO THE FINAL RFDS AND CHART FOR QUANTITY, MODEL AND DIMENSIONS

	L	W	D
RRUS - 11	19.7"	17.0"	7.2"
LTE - A2	16.4"	15.2"	3.4"

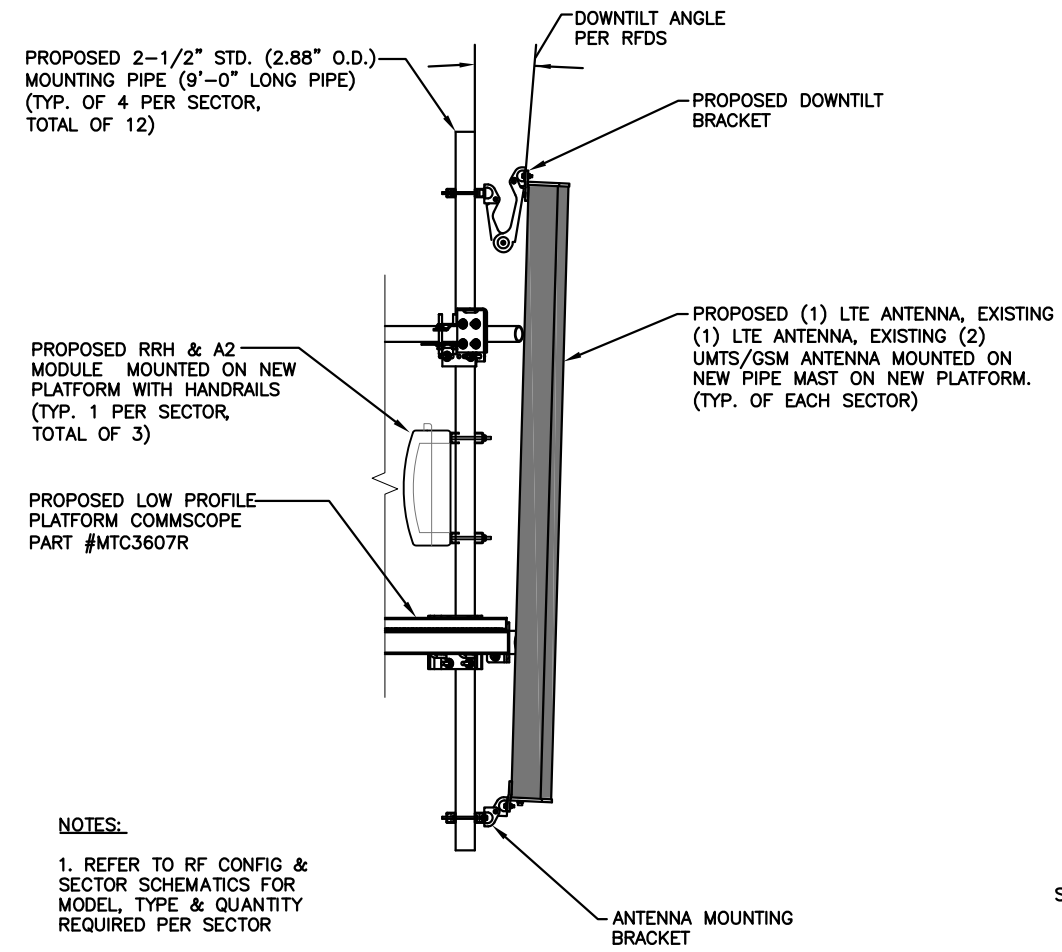
NOTE:  
MOUNT PER MANUFACTURER'S SPECIFICATIONS.

**RRH DETAIL**  
SCALE: N.T.S.



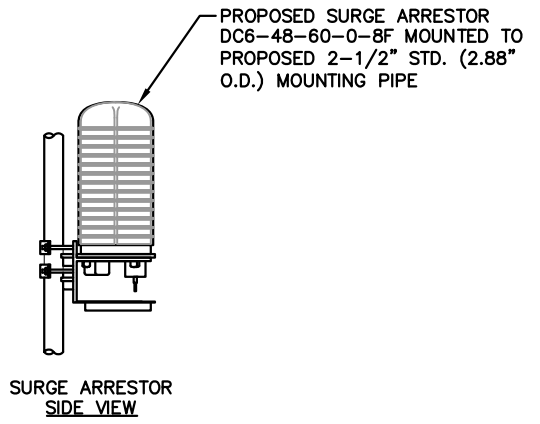
NOTE:  
MOUNT PER MANUFACTURER'S SPECIFICATIONS.

**DC SURGE SUPPRESSOR DETAIL**  
SCALE: N.T.S.

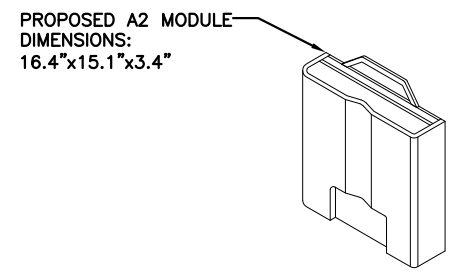


**NOTES:**  
1. REFER TO RF CONFIG & SECTOR SCHEMATICS FOR MODEL, TYPE & QUANTITY REQUIRED PER SECTOR

**PROPOSED LTE ANTENNA, RRH, & SURGE ARRESTOR MOUNTING DETAIL**  
SCALE: N.T.S.



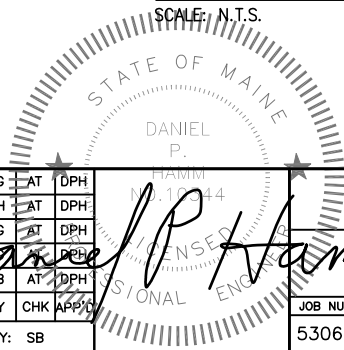
SURGE ARRESTOR SIDE VIEW



PROPOSED A2 MODULE DIMENSIONS:  
16.4"x15.1"x3.4"

NOTE:  
MOUNT PER MANUFACTURER'S SPECIFICATIONS.

**A2 MODULE DETAIL**  
SCALE: N.T.S.



**Hudson Design Group LLC**  
1600 OSGOOD STREET  
BUILDING 20 NORTH, SUITE 3090  
N. ANDOVER, MA 01845  
TEL: (978) 557-5553  
FAX: (978) 336-5586

**SAI**  
27 NORTHWESTERN DR.  
SALEM, NH 03079

**SITE NUMBER: ME5306**  
**SITE NAME: SPRINT PORTLAND**  
**CROWN ID: 878782**  
188 WARREN AVENUE  
PORTLAND, ME 04103  
CUMBERLAND COUNTY

**at&t**  
550 COCHITUATE ROAD  
FRMINGHAM, MA 01701

NO.	DATE	REVISIONS	BY	CHK	APP'D
3	04/29/15	ISSUED FOR CONSTRUCTION	SG	AT	DPH
2	01/26/15	ISSUED FOR CONSTRUCTION	NH	AT	DPH
1	01/14/14	ISSUED FOR CONSTRUCTION	SG	AT	DPH
0	12/27/13	ISSUED FOR REVIEW	SG	AT	DPH
A	11/20/13	ISSUED FOR REVIEW	SB	AT	DPH

SCALE: AS SHOWN    DESIGNED BY: AT    DRAWN BY: SB

AT&T  
DETAILS (CSOF-V1)

JOB NUMBER	DRAWING NUMBER	REV
5306.02	A-3	3