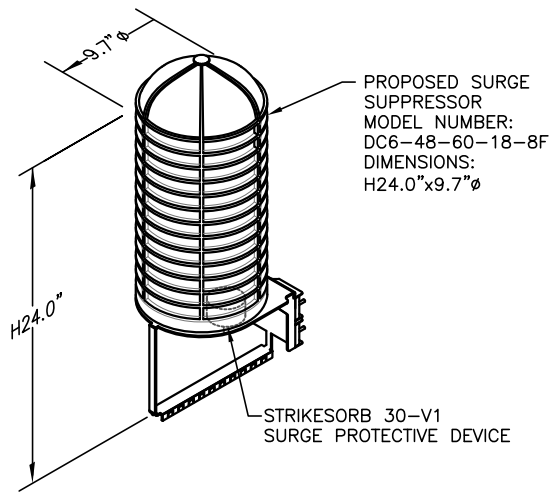


**NOTE:**  
SEE RFDS FOR RRH  
FREQUENCY AND  
MODEL NUMBER

ERICSSON RRH TYPE ASSIGNMENT PER BAND	
BAND	RRH TYPE/MODEL
700 BC	RRUS-11
700 DE	RRUS-E2
850	RRUS-11
PCS	RRUS-12+A2
AWS	IA BUILT IN
WCS	RRUS-32

**NOTE:**  
MOUNT PER MANUFACTURER'S  
SPECIFICATIONS.



**NOTE:**  
MOUNT PER MANUFACTURER'S SPECIFICATIONS.

**DC SURGE SUPPRESSOR DETAIL**

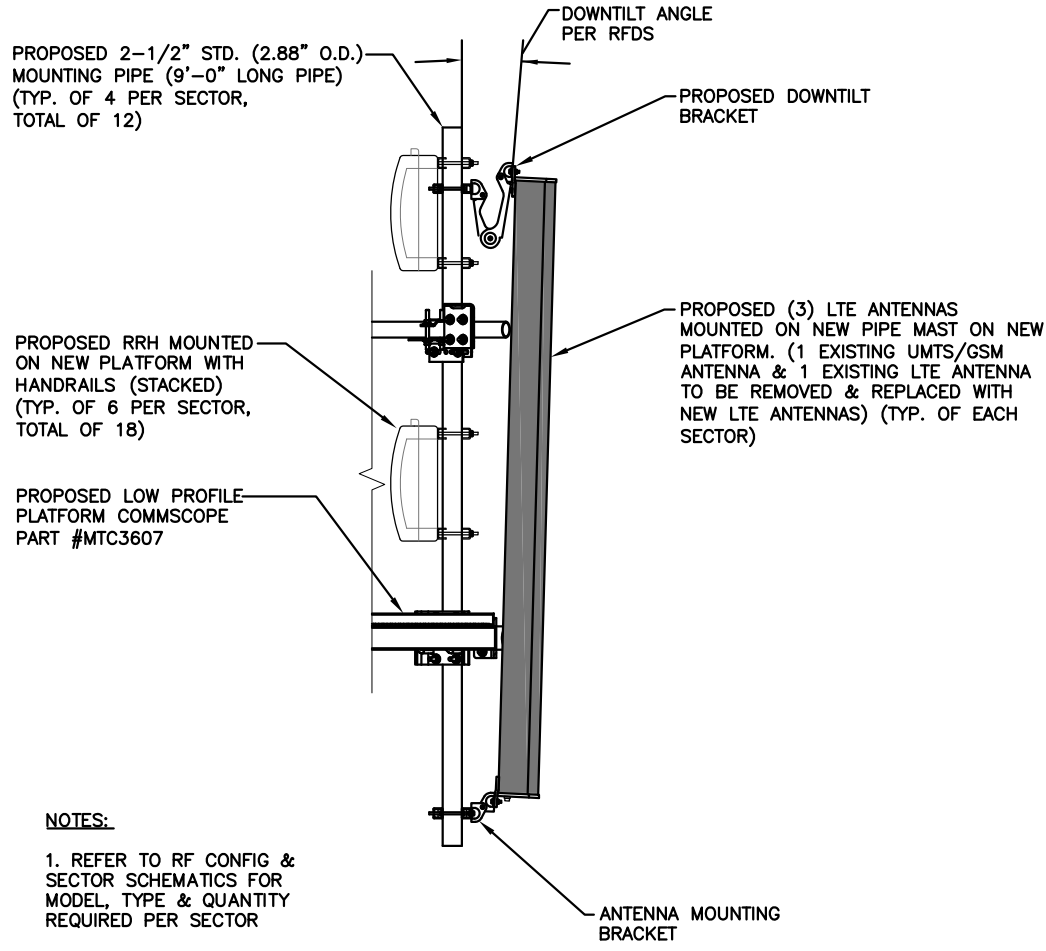
SCALE: N.T.S.

**NOTE:**  
REFER TO THE FINAL RF DATA SHEET FOR FINAL ANTENNA SETTINGS.

**NOTE:**  
ALL ANTENNAS AND COAX TO BE INSTALLED IN ACCORDANCE WITH STRUCTURAL ANALYSIS PROVIDED BY CROWN CASTLE AND FINAL AT&T RF DATA SHEET.

**RRH DETAIL**

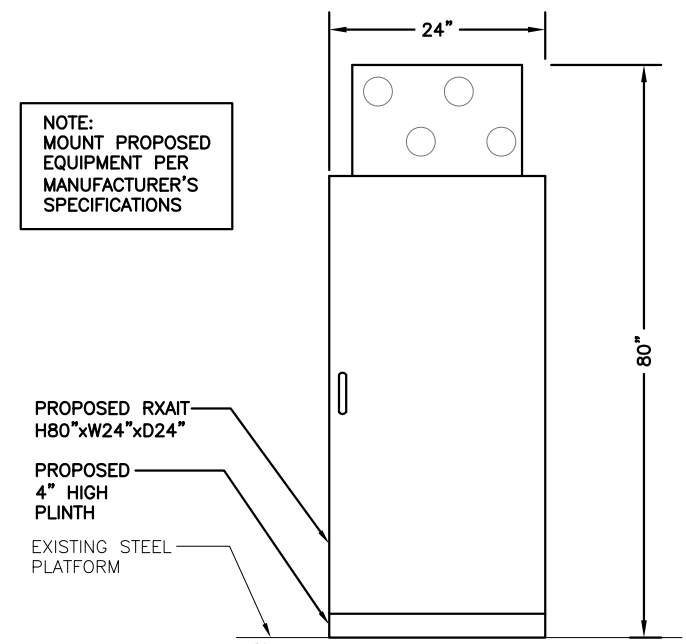
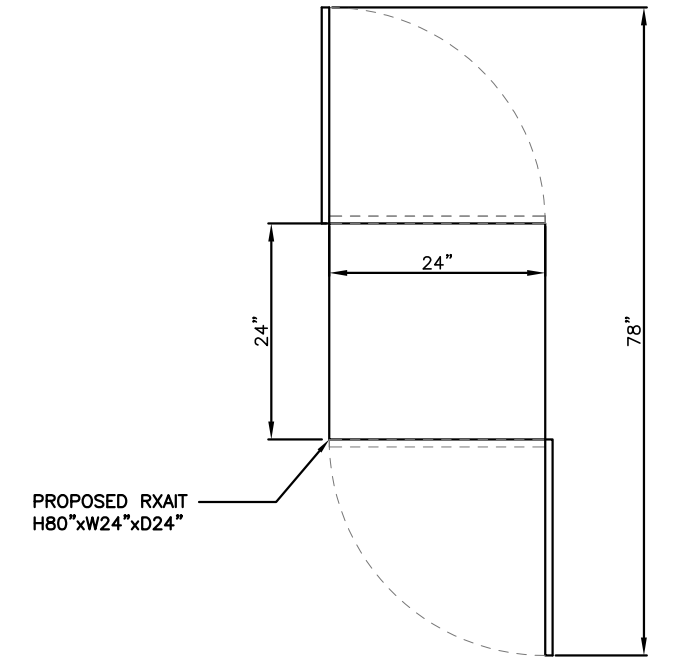
SCALE: N.T.S.



**NOTES:**  
1. REFER TO RF CONFIG & SECTOR SCHEMATICS FOR MODEL, TYPE & QUANTITY REQUIRED PER SECTOR

**PROPOSED LTE ANTENNA, RRH, & SURGE ARRESTOR MOUNTING DETAIL**

SCALE: N.T.S.



**NOTE:**  
MOUNT PROPOSED EQUIPMENT PER MANUFACTURER'S SPECIFICATIONS

**PROPOSED RXAIT DETAIL**

SCALE: N.T.S.

**Hudson Design Group LLC**  
1600 OSGOOD STREET  
BUILDING 20 NORTH, SUITE 3090  
N. ANDOVER, MA 01845  
TEL: (978) 557-5553  
FAX: (978) 336-5586

27 NORTHWESTERN DR.  
SALEM, NH 03079

**SITE NUMBER: ME5306**  
**SITE NAME: SPRINT PORTLAND**  
**CROWN ID: 878782**  
188 WARREN AVENUE  
PORTLAND, ME 04103  
CUMBERLAND COUNTY

**at&t**  
550 COCHITUATE ROAD  
FRMINGHAM, MA 01701

NO.	DATE	REVISIONS	BY	CHK	APP'D
1	01/14/14	ISSUED FOR CONSTRUCTION	SG	AT	DPH
0	12/27/13	ISSUED FOR REVIEW	DPH	AT	DPH
A	11/20/13	ISSUED FOR REVIEW	SB	AT	DPH

STATE OF MASSACHUSETTS  
PROFESSIONAL ENGINEER  
DANIEL P. HAMM  
NOV 11 2014  
AT&T  
DETAILS (LTE)  
JOB NUMBER: 5306.01  
DRAWING NUMBER: A-3  
REV: 1