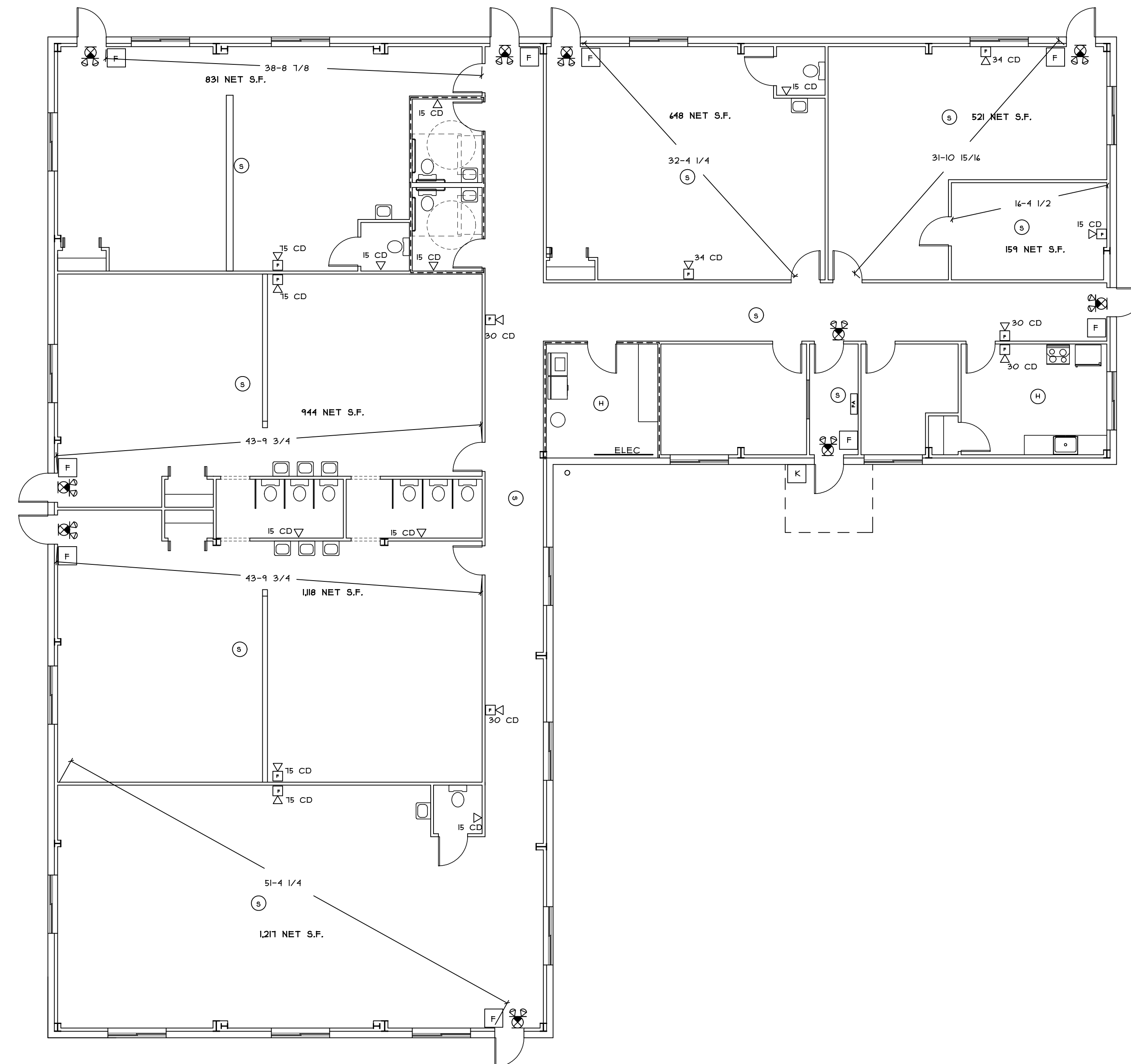


IBC 2009: CODE DATA		
OCCUPANT LOAD - TABLE 1004.1J	NET AREA = 5,438 S.F.	5,438/35 S.F. PER PERSON = 154
USE GROUP CLASSIFICATION - SECTION 305.2 & 308.5.2 EXCEPTION	E	
TYPE OF CONSTRUCTION - TABLE 601	II B	
ACTUAL BUILDING AREA	1,908 S.F.	
BUILDING AREA LIMITATION - TABLE 503	14,500 S.F.	
STREET FRONTAGE INCREASE - 504.2	NA	
AUTOMATIC SPRINKLER SYS. INCREASE - 504.3	NA	
ALLOWABLE BUILDING AREA	14,500 S.F.	
BUILDING HEIGHT LIMITATION - TABLE 503	2 STORY	
ALLOWABLE BUILDING HEIGHT - WITH ALLOWABLE INCREASES	18'-0" 1 STORY	
BUILDING HEIGHT	NONE	
FIRE SUPPRESSION:		
FIRE RESISTANT CONSTRUCTION:		
STRUCTURAL FRAME	NA	
EXTERIOR BEARING WALLS	NA	
INTERIOR BEARING WALLS	NA	
CORRIDOR WALLS 109.1 EXCEPTION #1	NOT REQUIRED	
FIRE WALLS & PARTY WALLS	AS SHOWN	
FLOOR CONSTRUCTION	NA	
ROOF CONSTRUCTION	NA	
STAIR ENCLOSURES	NA	
EXIT ACCESS TRAVEL DISTANCE 101.1	200' (NO SPRINKLER SYSTEM)	
COMMON PATH OF TRAVEL 104.3	15' (NO SPRINKLER SYSTEM)	
MINIMUM NUMBER OF EXITS - TABLE 102.1	2	
ACCESSORY USE - 508.2.1 LESS THAN 10%	OFFICE & KITCHEN	
FIRE EXTINGUISHERS - TABLE 904.3(1)	2-A, AS SHOWN	
GENERAL NOTES		

NFPA 101: CODE DATA - 2009 EDITION		
OCCUPANT LOAD - TABLE 1.3.1.2	NET AREA = 5,438 S.F.	5,438/35 S.F. PER PERSON = 154
USE GROUP CLASSIFICATION 16.1		
TYPE OF CONSTRUCTION - TABLE 8.1	II (OOO)	
ACTUAL BUILDING AREA	1,908 S.F.	
BUILDING HEIGHT	18'-0" 1 STORY	
FIRE SUPPRESSION:		
FIRE RESISTANT CONSTRUCTION:		
STRUCTURAL FRAME	NA	
EXTERIOR BEARING WALLS	NA	
INTERIOR BEARING WALLS	NA	
EXTERIOR NONBEARING WALLS	NA	
CORRIDOR WALLS 14.3.4 (1)	NOT REQUIRED	
MECHANICAL ROOM 16.3.2 (1) A	1 HR. REQUIRED	
ROOF CONSTRUCTION	NA	
STAIR ENCLOSURES	NA	
TRAVEL DISTANCE FROM ROOM DOOR TO EXIT 14.2.4.2 (1)	100'	
TRAVEL DISTANCE FROM ANY POINT IN ROOM TO EXIT 14.2.4.2 (2)	150'	
TRAVEL DISTANCE FROM ANY POINT IN SLEEPING ROOM TO EXIT IN ROOM 14.2.4.2 (3)	50'	
COMMON PATH OF TRAVEL - 14.2.5.3	15' (NO SPRINKLER SYSTEM)	
MINIMUM NUMBER OF EXITS 14.2.4	2	
ACCESSORY USE	NA	
FIRE EXTINGUISHERS	2-A, AS SHOWN	
GENERAL NOTES		

NFPA 1: CODE DATA - 2009 EDITION		
OCCUPANT LOAD - TABLE 14.8.1.2	NET AREA = 5,438 S.F.	5,438/35 S.F. PER PERSON = 154
USE GROUP CLASSIFICATION - SECTION 4.1.4.1	DAY CARE	
TYPE OF CONSTRUCTION - TABLE A.12.2	II (OOO)	
ACTUAL BUILDING AREA	1,908 S.F.	
BUILDING HEIGHT	18'-0" 1 STORY	
FIRE SUPPRESSION:		
FIRE WALLS & PARTY WALLS	NA	
COMMON PATH OF TRAVEL 14.9.1.4	15' (NO SPRINKLER SYSTEM)	
MINIMUM NUMBER OF EXITS 14.9.1.1	2	
FIRE FLOW TABLE 18.4.5.1.2	2,000 GPM	
FIRE FLOW REDUCTION 18.4.5.2.1	0%	
FIRE FLOW 18.4.5.2.1	2,000 GPM	
MINIMUM NUMBER OF HYDRANTS TABLE 1.3	2 9450' SPACING	
MAX. DISTANCE FROM HYDRANT TO STREET FRONTAGE TABLE 1.3	225'	
ACTUAL DISTANCE FROM HYDRANT TO STREET FRONTAGE	AT PROPERTY LINE	
FIRE EXTINGUISHERS - TABLE 13.4.8.2.1	2-A, AS SHOWN	
GENERAL NOTES		

- MANUAL PULL STATION
- ADA HORN/STROBE
- ADA STROBE ONLY
- ALARM PANEL
- SMOKE DETECTOR
- EXIT SIGN
- EMERGENCY LIGHT PACK
- KNOX BOX
- FIRE EXTINGUISHER



BG

BISKUP CONSTRUCTION, INC.
 16 DANIELLE DRIVE
 WINDHAM, MAINE 04062
 TEL. (207) 892-9800
 FAX. (207) 892-9895
 WWW.BISKUPCONSTRUCTION.COM

STAMP

J. M. STREETER
ARCHITECTURAL
ENGINEER

44 CARSOE DRIVE
 PORTLAND, MAINE 04103 (207) 797-3093

PROJECT:

PROPOSED BUILDING
 ACADEMY FOR ACTIVE LEARNERS
 PORTLAND, MAINE

REVISIONS	
DATE	DESCRIPTION

DATE: 11/23/2015
 SCALE: 1/8" = 1'-0"
 DESIGNER: JB
 CHECKED BY: JB

© COPYRIGHT
 BISKUP CONSTRUCTION, INC.

SHEET TITLE

**LIFE SAFETY
 PLAN**

SHEET NUMBER

A-2

SHEET 2 OF 4