

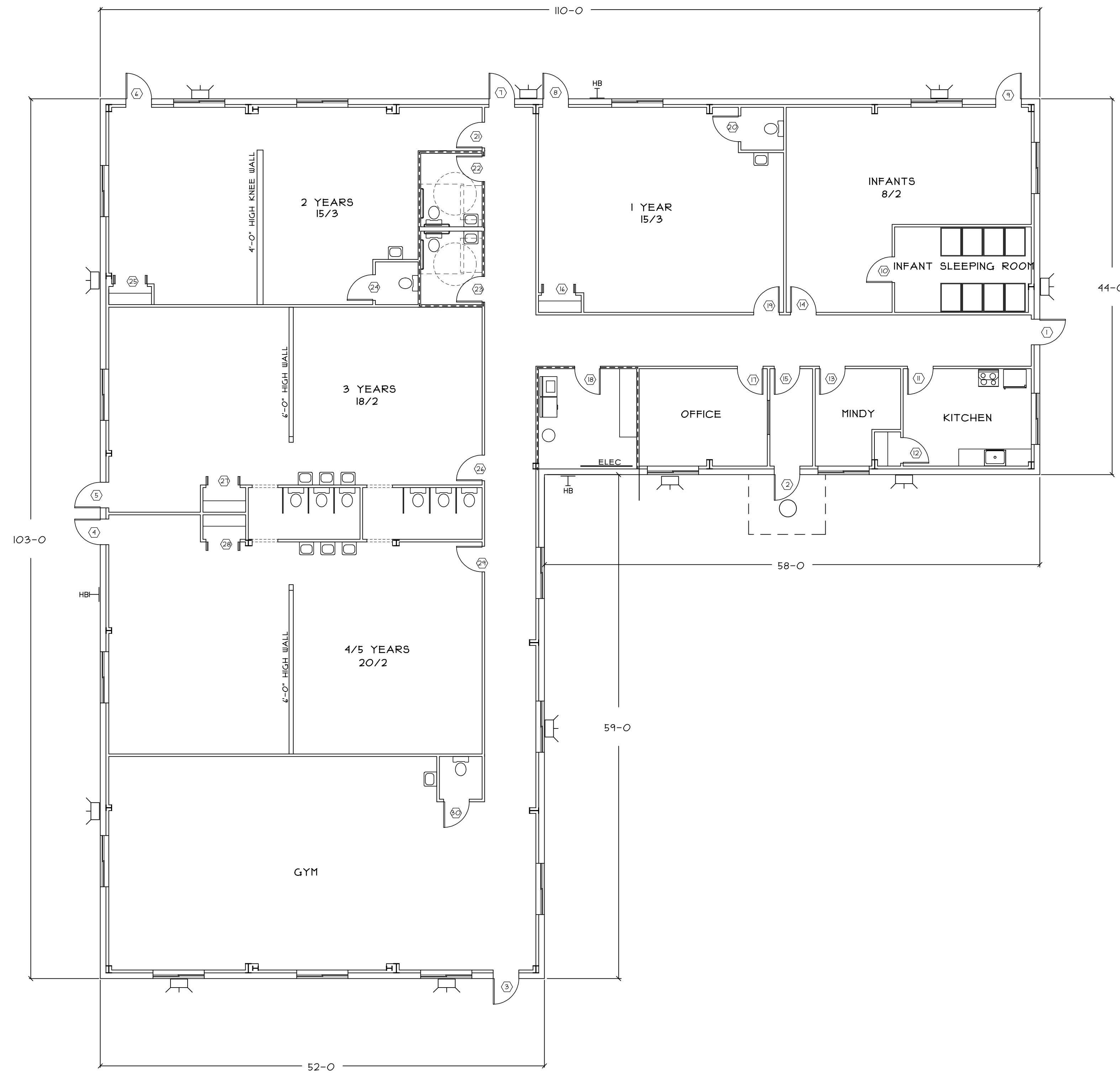
DOOR SCHEDULE

TAG	DOOR SLAB	SIZE	THICKNESS	SWING	FIRE LABEL	FRAME	WALL THICKNESS	REMARKS	
1	HM	30/10	1 3/4	LH		HH	4 1/8	24 X 30 INS. GLASS	PANIC HRDWR SET #1
2	HM	30/10	1 3/4	RH		HH	4 1/8	FULL INS. GLASS	PANIC HRDWR SET #1
3	HM	30/10	1 3/4	RH		HH	4 1/8	24 X 30 INS. GLASS	PANIC HRDWR SET #1
4	HM	30/10	1 3/4	RH		HH	4 1/8	24 X 30 INS. GLASS	HRDWR SET #1
5	HM	30/10	1 3/4	LH		HH	4 1/8	24 X 30 INS. GLASS	HRDWR SET #1
6	HM	30/10	1 3/4	LH		HH	4 1/8	24 X 30 INS. GLASS	HRDWR SET #1
7	HM	30/10	1 3/4	LH		HH	4 1/8	24 X 30 INS. GLASS	PANIC HRDWR SET #1
8	HM	30/10	1 3/4	LH		HH	4 1/8	24 X 30 INS. GLASS	HRDWR SET #1
9	HM	30/10	1 3/4	RH		HH	4 1/8	24 X 30 INS. GLASS	HRDWR SET #1
10	SCB	30/10	1 3/4	LH		HH	4 1/8		HRDWR SET #3
11	SCB	30/10	1 3/4	RH		HH	4 1/8	24 X 30 SAFETY GLASS	HRDWR SET #3
12	SCB	30/10	1 3/4	RH		HH	4 1/8		HRDWR SET #2
13	SCB	30/10	1 3/4	RH		HH	4 1/8	24 X 30 SAFETY GLASS	HRDWR SET #2
14	SCB	30/10	1 3/4	LH		HH	4 1/8	24 X 30 SAFETY GLASS	HRDWR SET #3
15	SCB	30/10	1 3/4	RH		HH	4 1/8	24 X 30 SAFETY GLASS KEY PAD	HRDWR SET #5
16	HCB	P.R. 20/10	1 3/4			HH	4 1/8		BI-FOLD HARDWARE
17	SCB	30/10	1 3/4	LH		HH	4 1/8	24 X 30 SAFETY GLASS	HRDWR SET #3
18	SCB	30/10	1 3/4	LH	I HR	HH	4 1/8		HRDWR SET #5
19	SCB	30/10	1 3/4	RH		HH	4 1/8	24 X 30 SAFETY GLASS	HRDWR SET #3
20	SCB	30/10	1 3/4	RH		HH	4 1/8		HRDWR SET #3
21	SCB	30/10	1 3/4	LH		HH	4 1/8	24 X 30 SAFETY GLASS	HRDWR SET #3
22	SCB	30/10	1 3/4	RH	I HR	HH	4 1/8		HRDWR SET #4
23	SCB	30/10	1 3/4	LH	I HR	HH	4 1/8		HRDWR SET #4
24	SCB	30/10	1 3/4	LH		HH	4 1/8		HRDWR SET #3
25	HCB	P.R. 20/10	1 3/4			HH	4 1/8		BI-FOLD HARDWARE
26	SCB	30/10	1 3/4	LH		HH	4 1/8	24 X 30 SAFETY GLASS	HRDWR SET #3
27	HCB	P.R. 20/10	1 3/4			HH	4 1/8		BI-FOLD HARDWARE
28	HCB	P.R. 20/10	1 3/4			HH	4 1/8		BI-FOLD HARDWARE
29	SCB	30/10	1 3/4	RH		HH	4 1/8	24 X 30 SAFETY GLASS	HRDWR SET #3
30	SCB	30/10	1 3/4	RH		HH	4 1/8		HRDWR SET #3

HARDWARE SCHEDULE

SET #1	HINGES, CLOSER, LOCKSET, WEATHERSTRIP, THRESHOLD
SET #2	HINGES, LOCKSET
SET #3	HINGES, PASSAGE SET
SET #4	HINGES, CLOSER, PRIVACY SET
SET #5	HINGES, CLOSER, LOCK SET

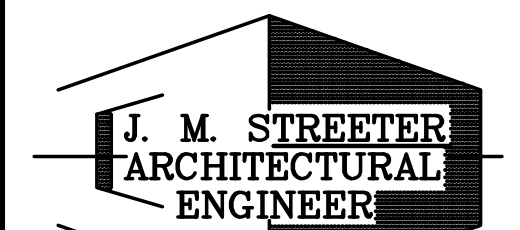
NOTE: ALL LOCKS TO BE MASTER KEYED



BISKUP CONSTRUCTION, INC.
16 DANIELLE DRIVE
WINDHAM, MAINE 04062
TEL. (207) 892-9800
FAX. (207) 892-9895

WWW.BISKUPCONSTRUCTION.COM

STAMP



66 GARSIDE DRIVE
PORTLAND, MAINE 04103 (207) 797-3093

PROJECT:
PROPOSED BUILDING
ACADEMY FOR ACTIVE LEARNERS
PORTLAND, MAINE

REVISIONS

DATE	DESCRIPTION

DATE: 11/23/2015
SCALE: 1/8" = 1'-0"
DESIGNER: JB
CHECKED BY: JB

© COPYRIGHT
BISKUP CONSTRUCTION, INC.

SHEET TITLE

FLOOR PLAN

SHEET NUMBER

A-1

SHEET 1 OF 4