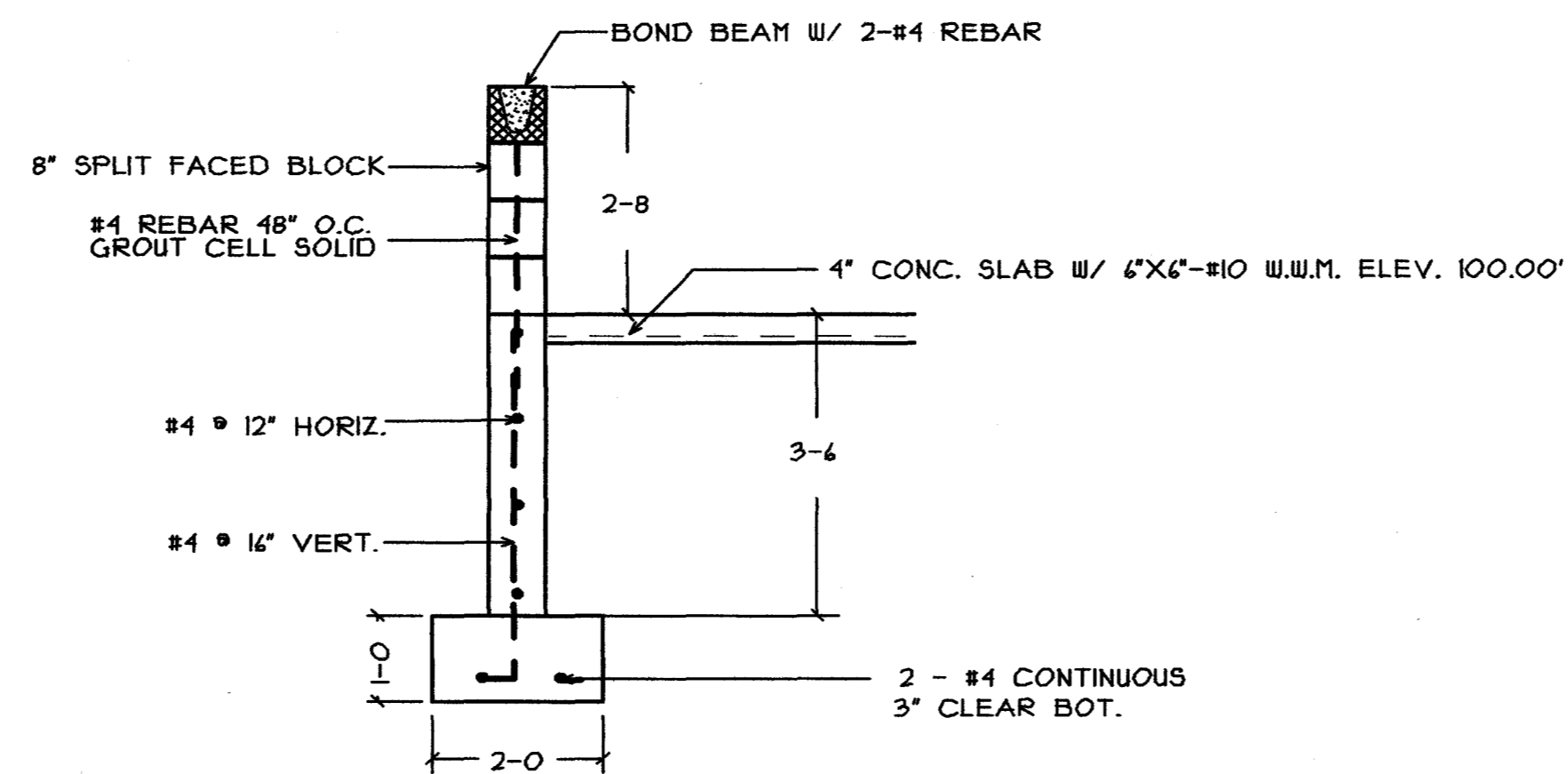
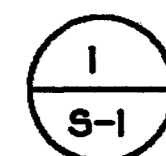


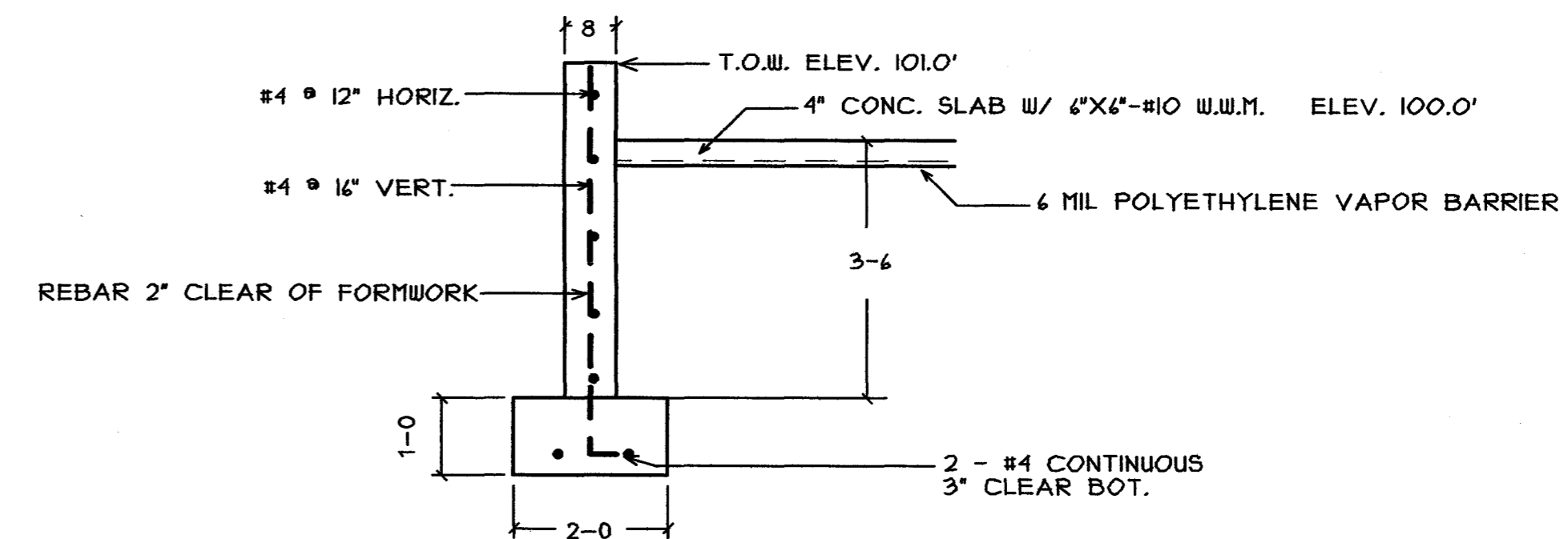
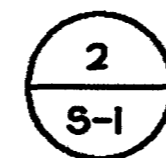
SECTION THRU DOOR OPENINGS

SCALE: 1/2"=1'-0"



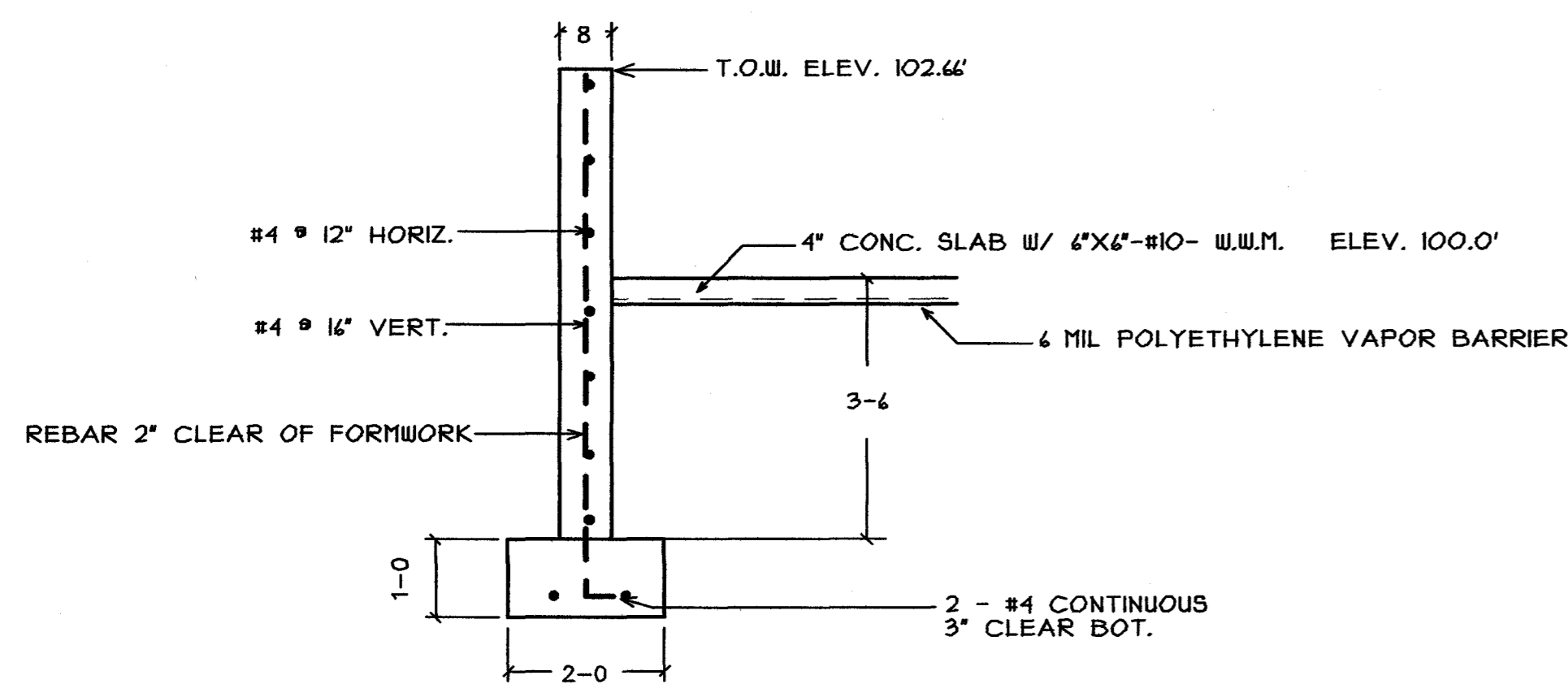
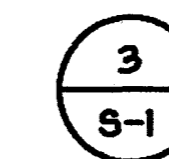
WALL SECTION

SCALE: 1/2"=1'-0"



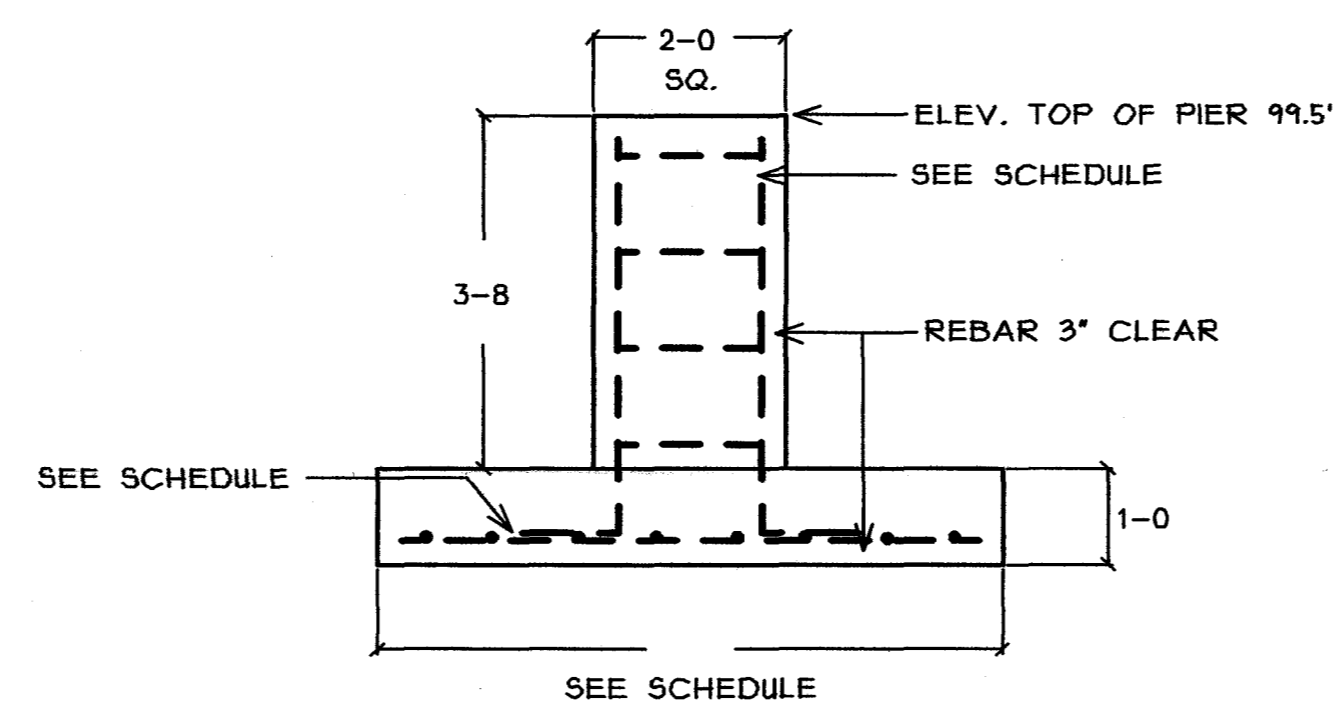
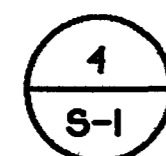
WALL SECTION

SCALE: 1/2"=1'-0"



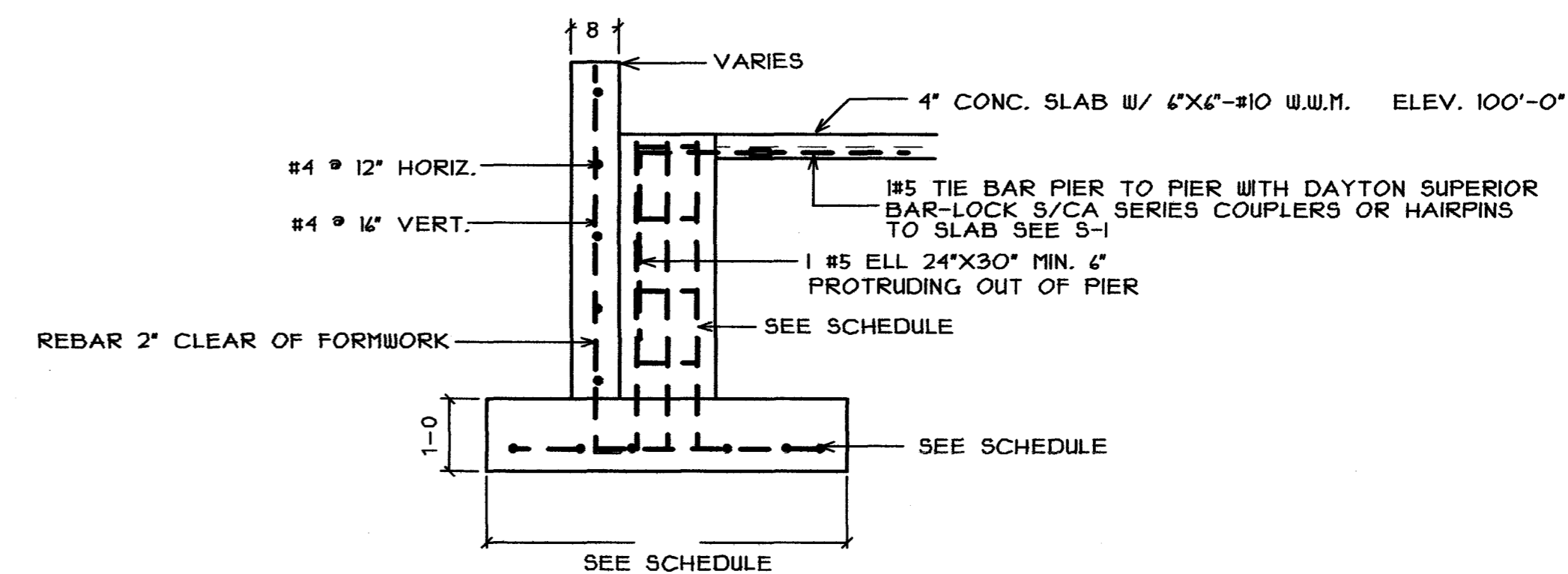
WALL SECTION

SCALE: 1/2"=1'-0"



TYP. INT. FOOTING & PIER

SCALE: 1/2"=1'-0"

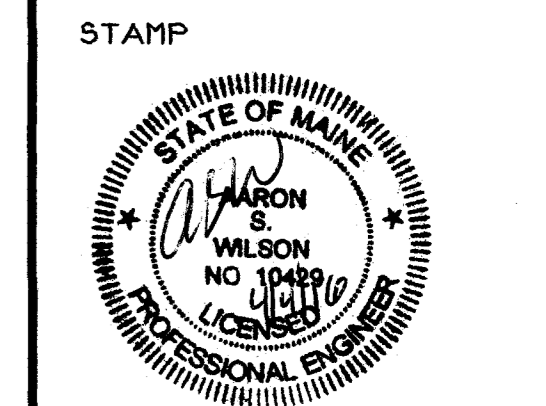


WALL SECTION @ PIERS  
4G, 5G, 6G, 4K, 5K, 6K

**B C G**  
BISKUP CONSTRUCTION, INC.  
16 DANIELLE DRIVE  
WINDHAM, MAINE 04062  
TEL. (207) 892-9800  
FAX. (207) 892-9895

WWW.BISKUPCONSTRUCTION.COM

CONSULTANT  
ASSOCIATED DESIGN  
PARTNERS INC.  
10 Lehigh Road  
Farmington, Maine 04841  
Office: (207) 875-1771  
Fax: (207) 875-1788  
www.associateddesign.com



PROJECT:  
PROPOSED BUILDING  
ACADEMY FOR ACTIVE LEARNERS  
134 WARREN AVENUE  
PORTLAND, MAINE

REVISIONS	
DATE	DESCRIPTION

DATE: 4/4/2016  
SCALE: 1/2" = 1'-0"  
DESIGNER: AW  
CHECKED BY: JB

© COPYRIGHT  
BISKUP CONSTRUCTION, INC.

SHEET TITLE  
FOUNDATION  
DETAILS

SHEET NUMBER  
S-2  
SHEET 2 OF 2