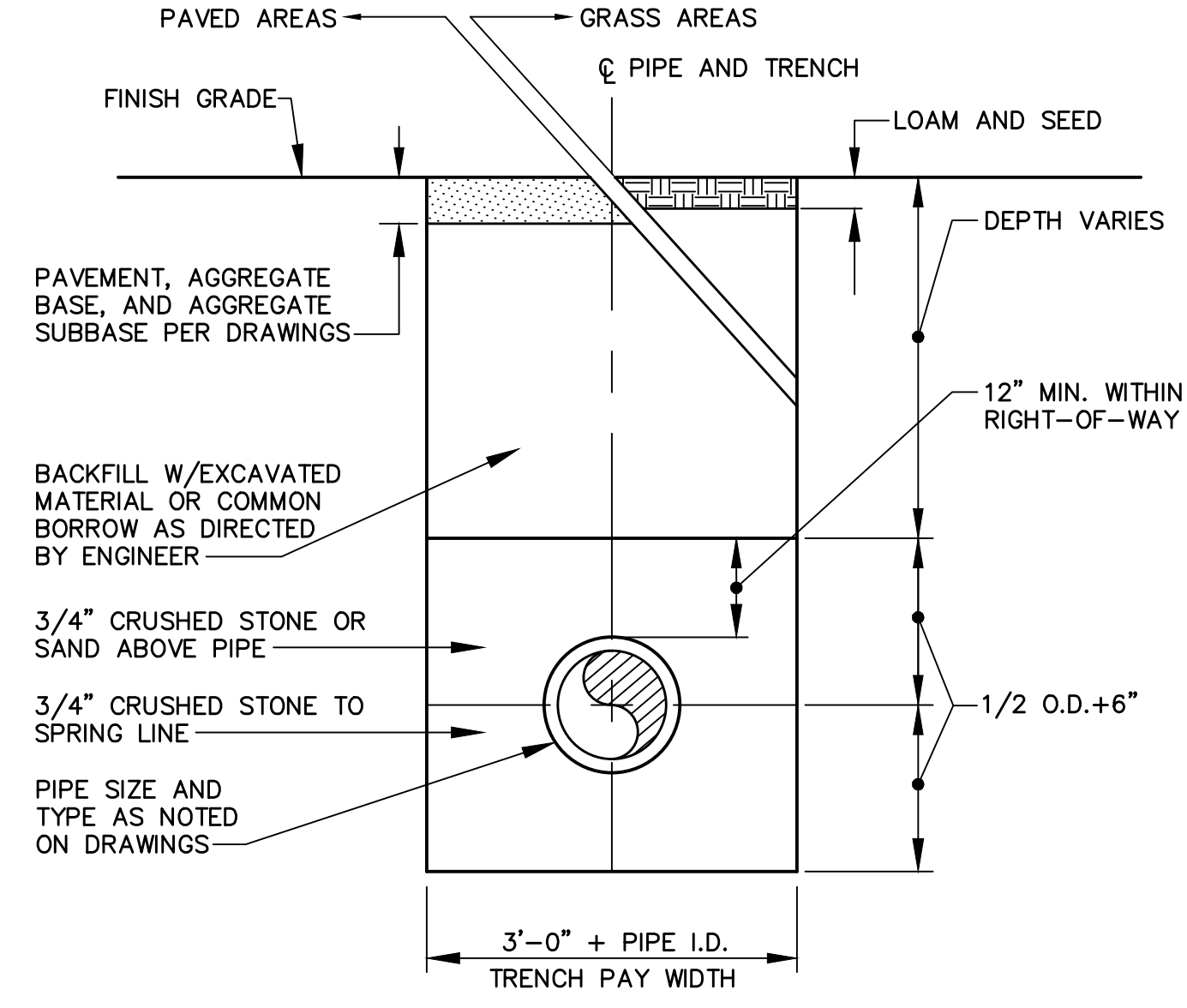
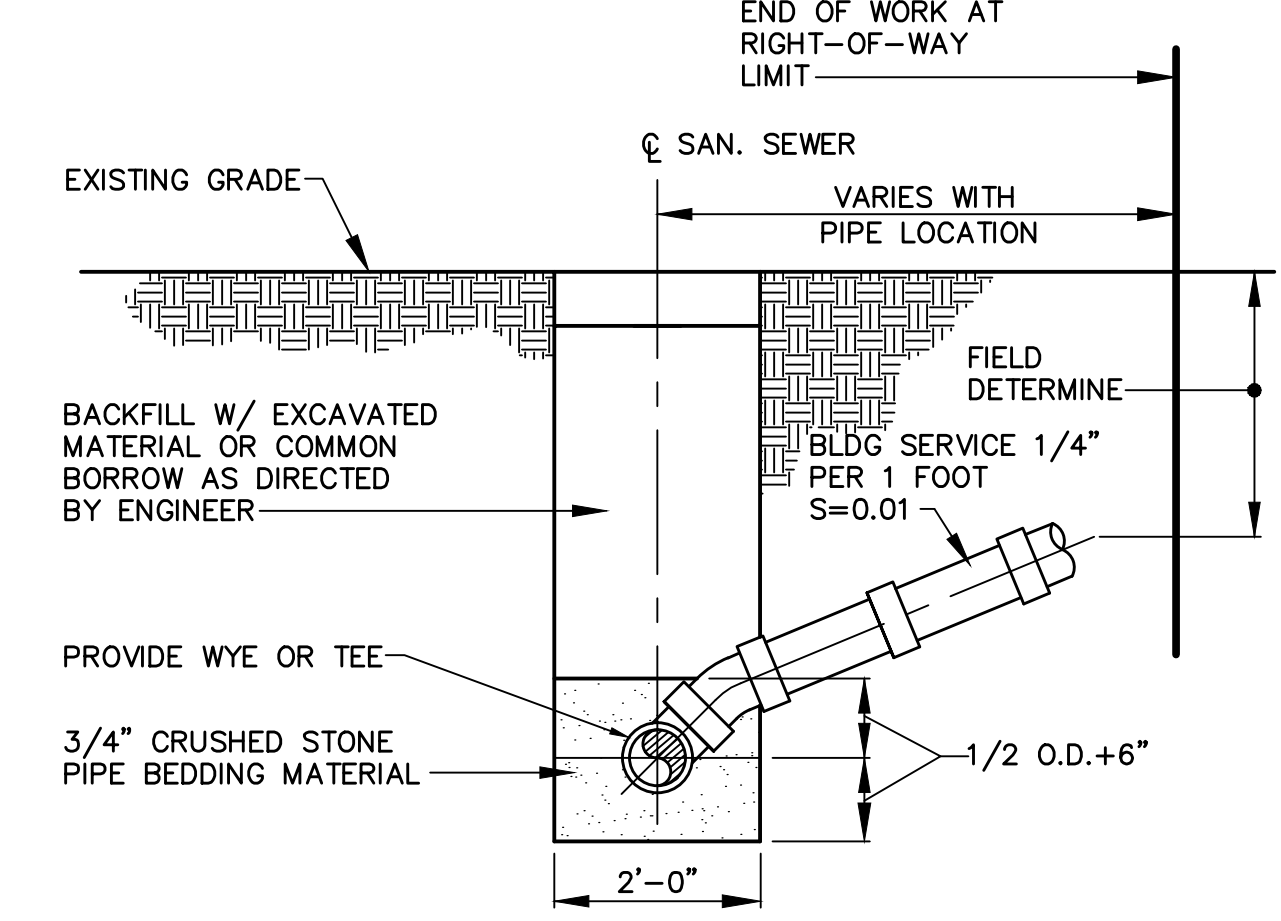


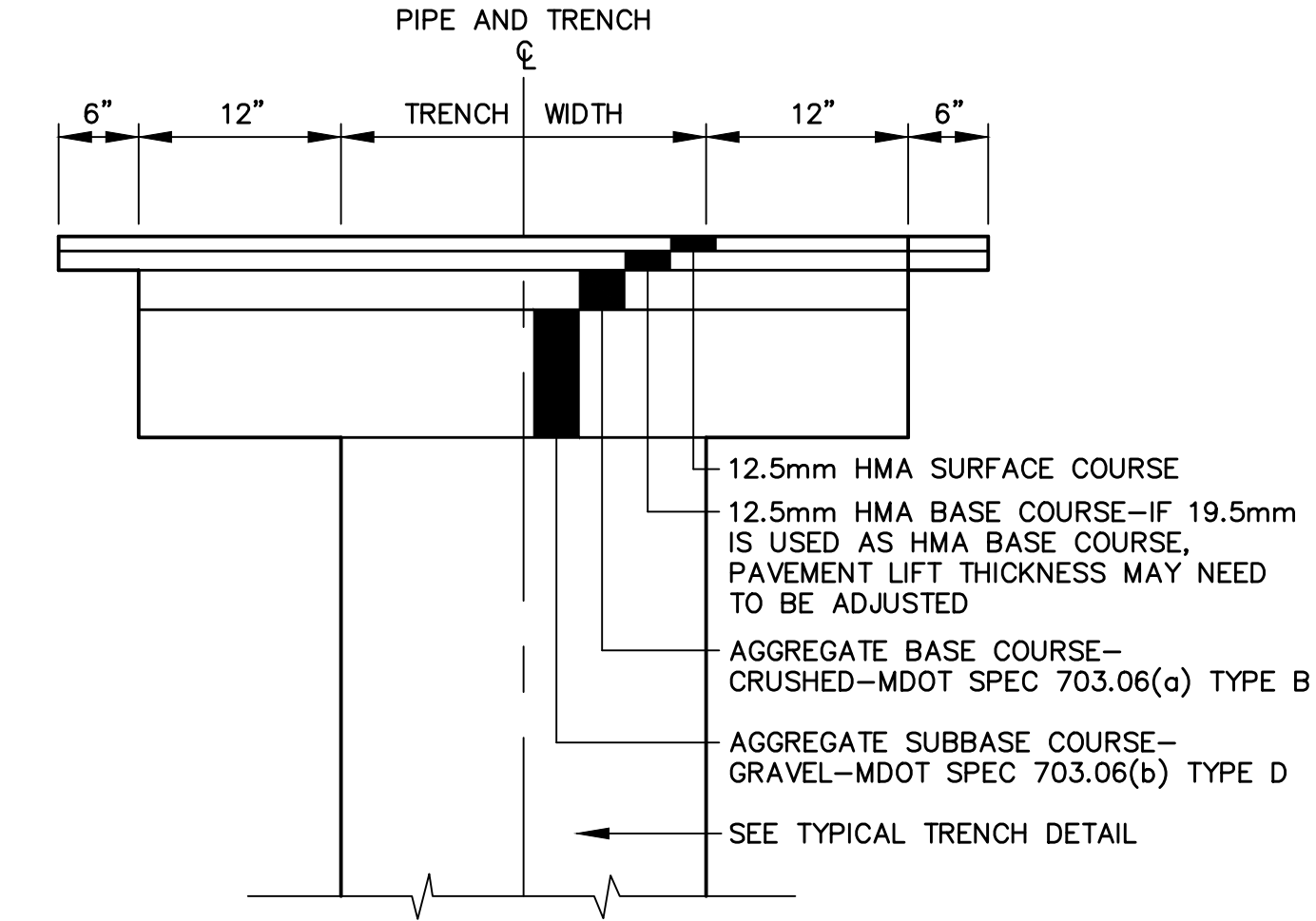
UNDERGROUND UTILITY TRENCH DETAIL
NOT TO SCALE



TYPICAL SANITARY / STORM SEWER DETAIL
NOT TO SCALE



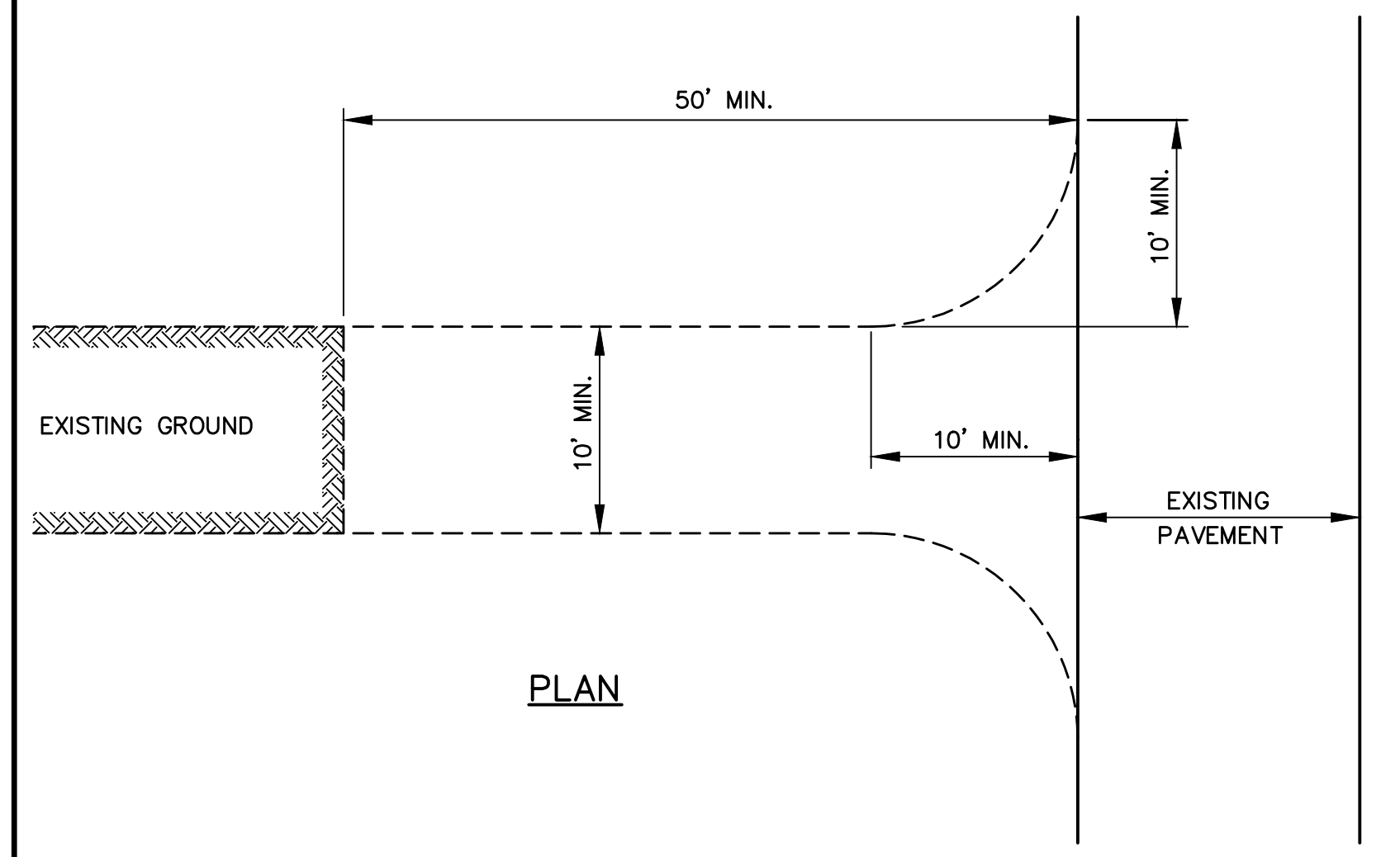
TYPICAL SANITARY TEE/WYE CONNECTION
NOT TO SCALE



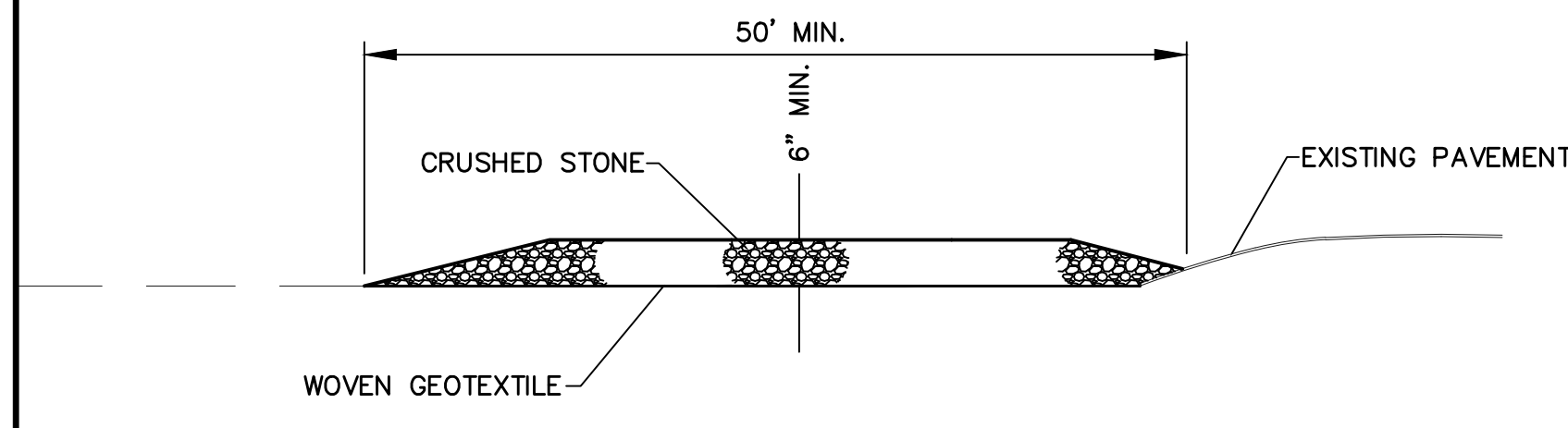
	WITHIN SITE	WITHIN R.O.W.
SURFACE	1-1/2"	2"
BASE*	1-1/2"	3"
AGGREGATE BASE	3"	3"
AGGREGATE SUB-BASE	15"	18"

*12.5mm HMA BASE COURSE-IF 19.5mm IS USED AS HMA BASE COURSE, PAVEMENT LIFT THICKNESS MAY NEED TO BE ADJUSTED

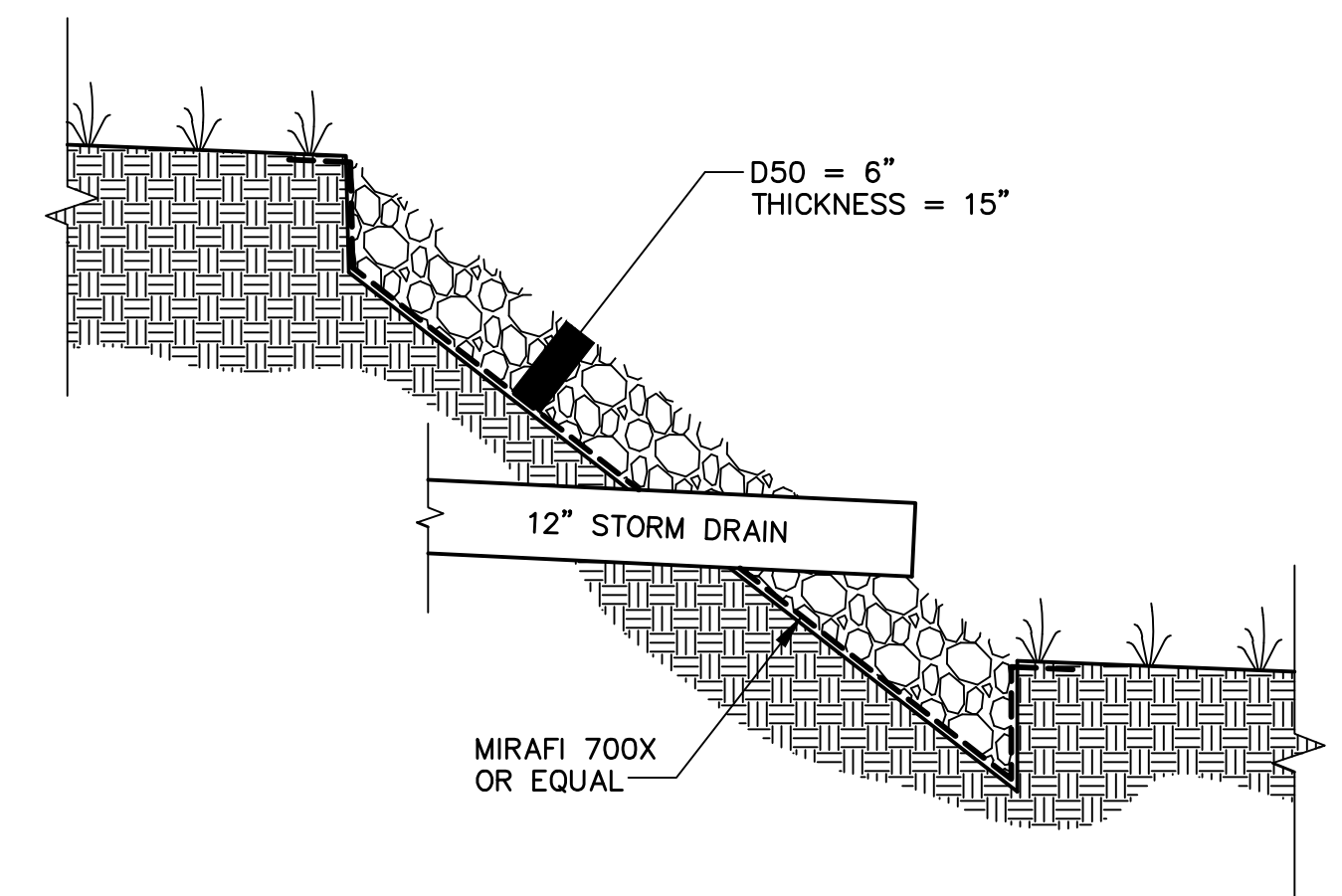
TYPICAL TRENCH PAVING DETAIL
NOT TO SCALE



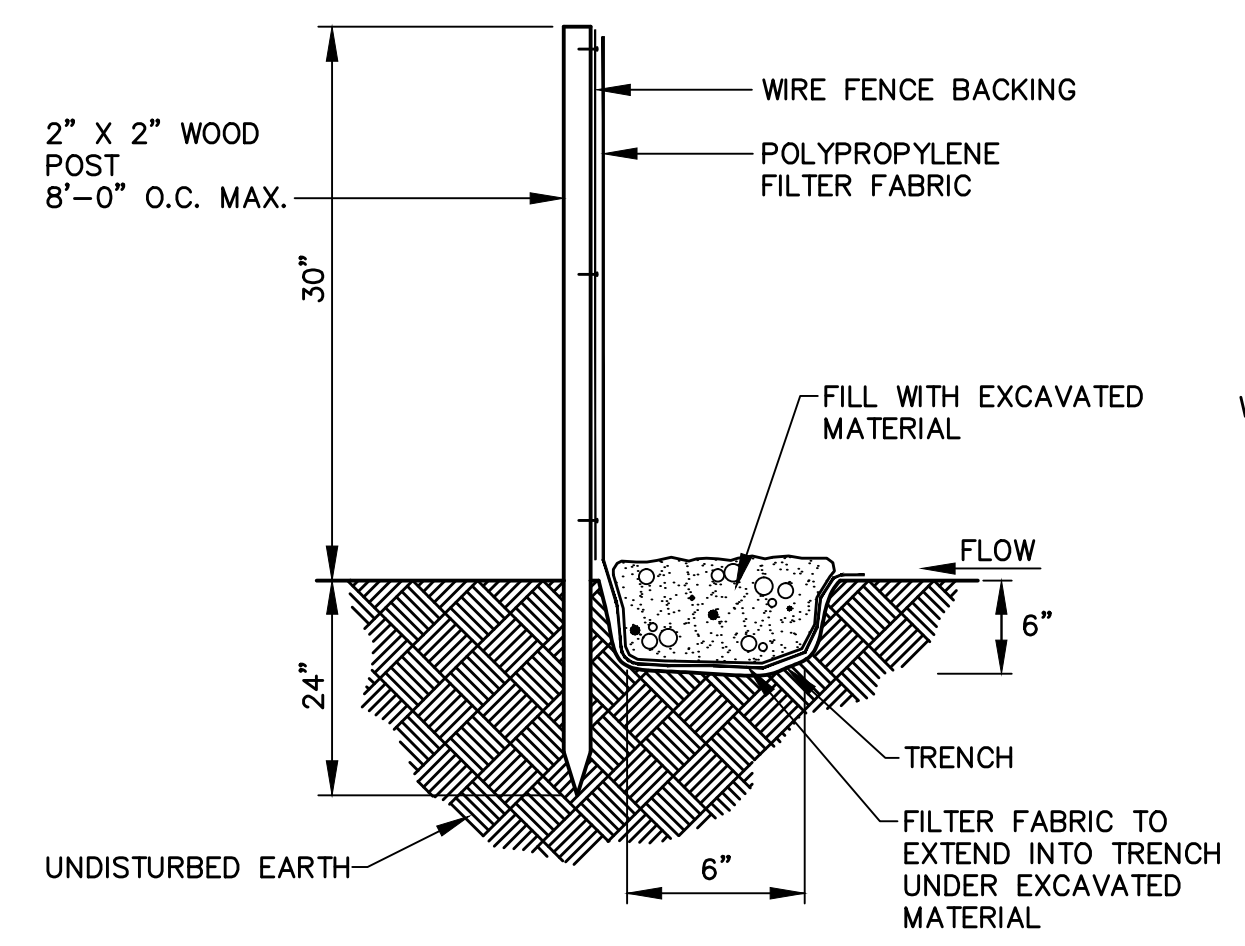
PLAN



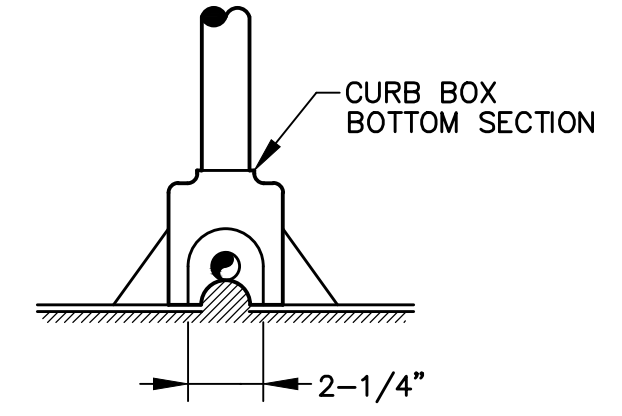
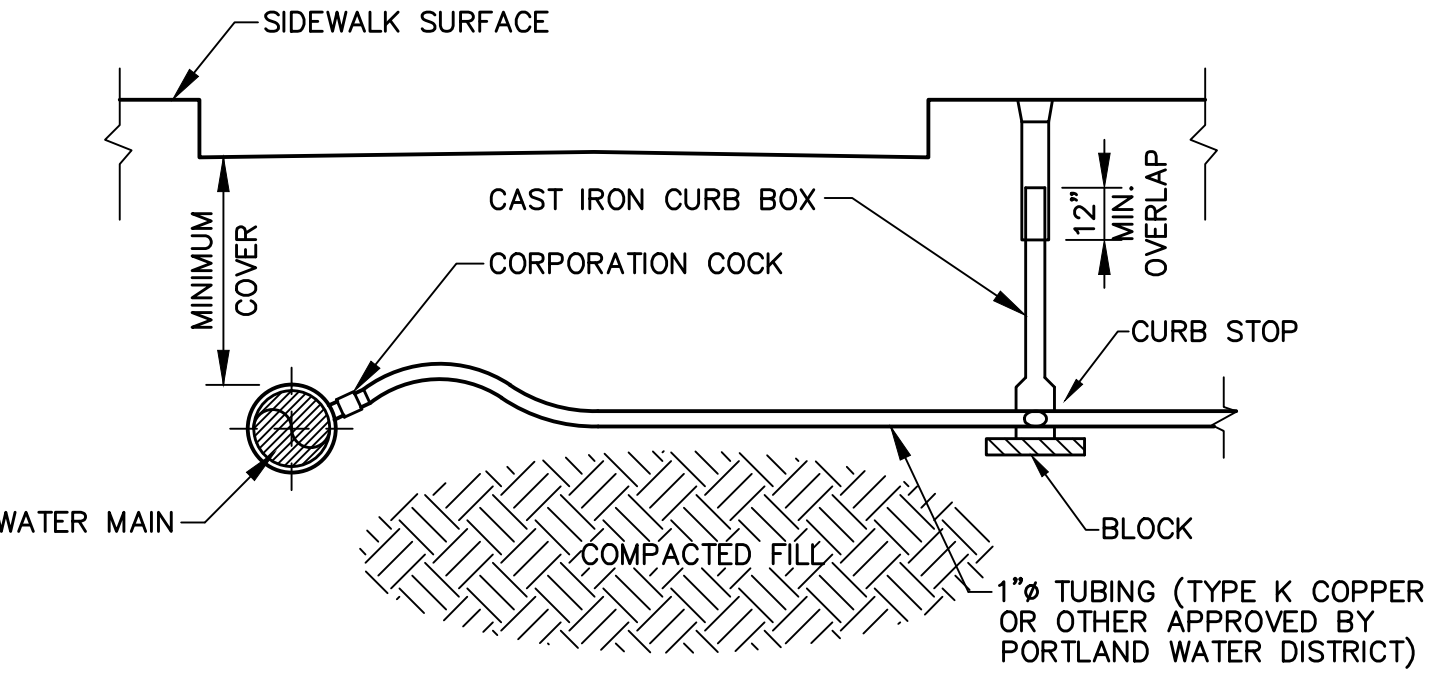
PROFILE



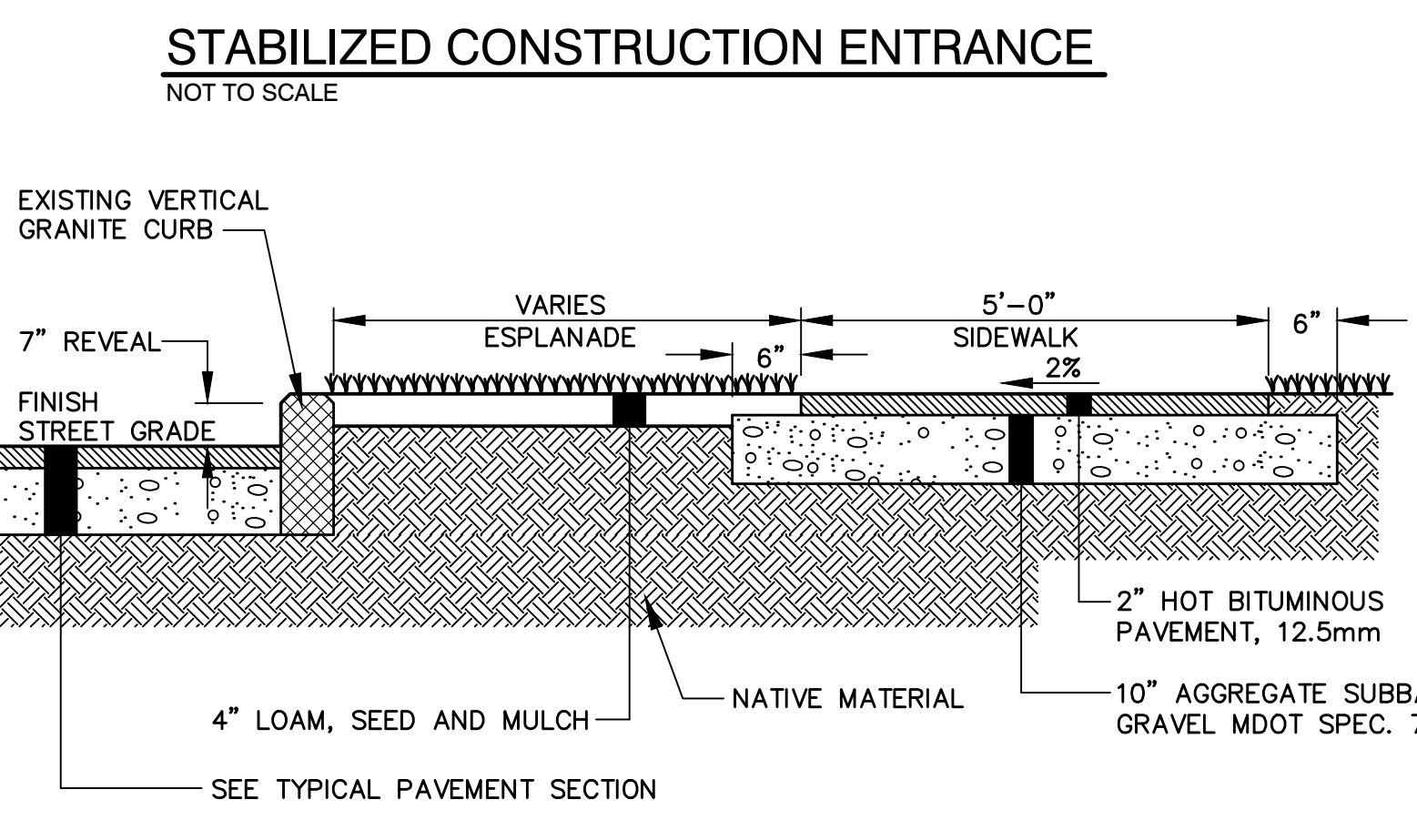
RIPRAP SLOPE PROTECTION
NOT TO SCALE



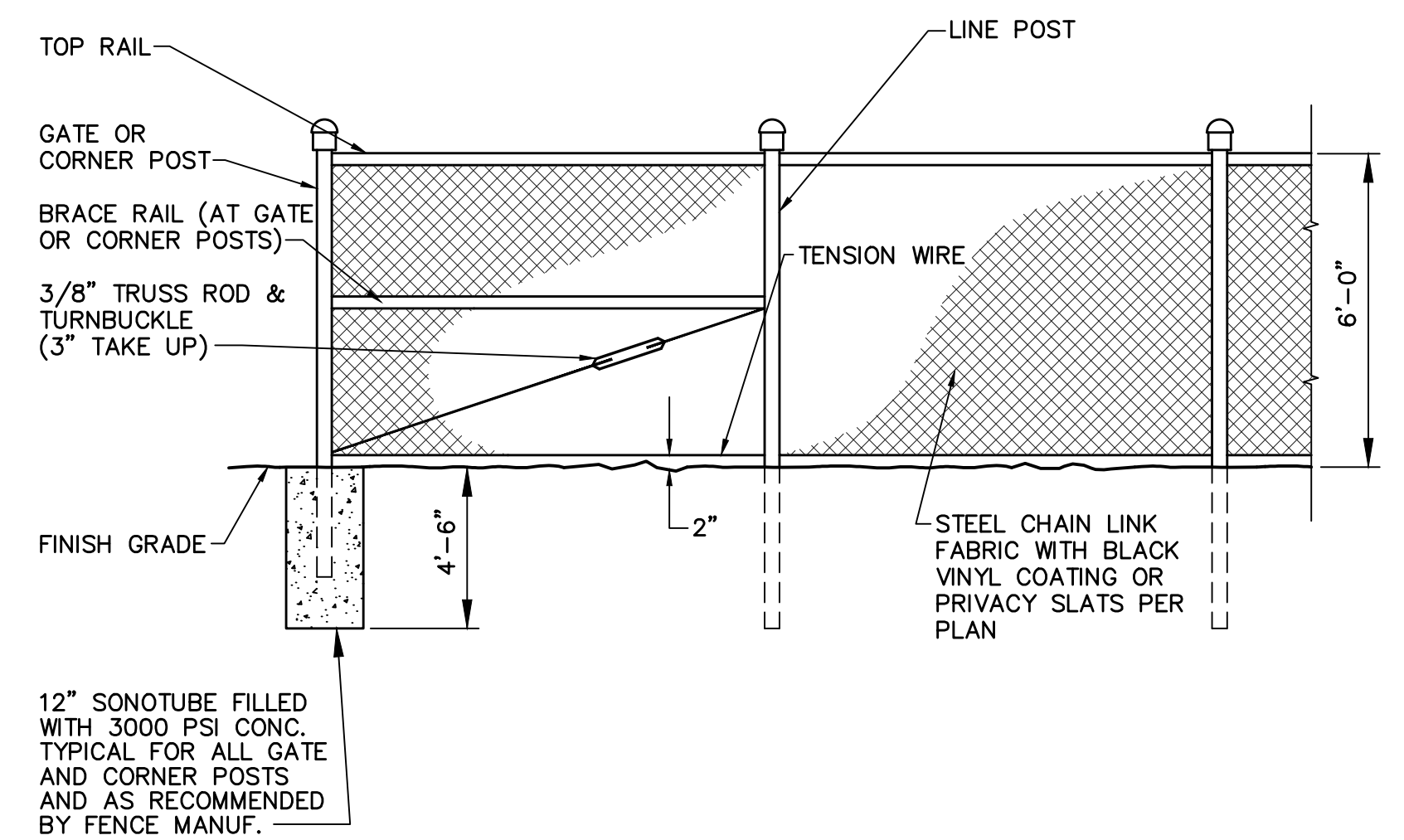
EROSION CONTROL FENCE DETAIL
NOT TO SCALE



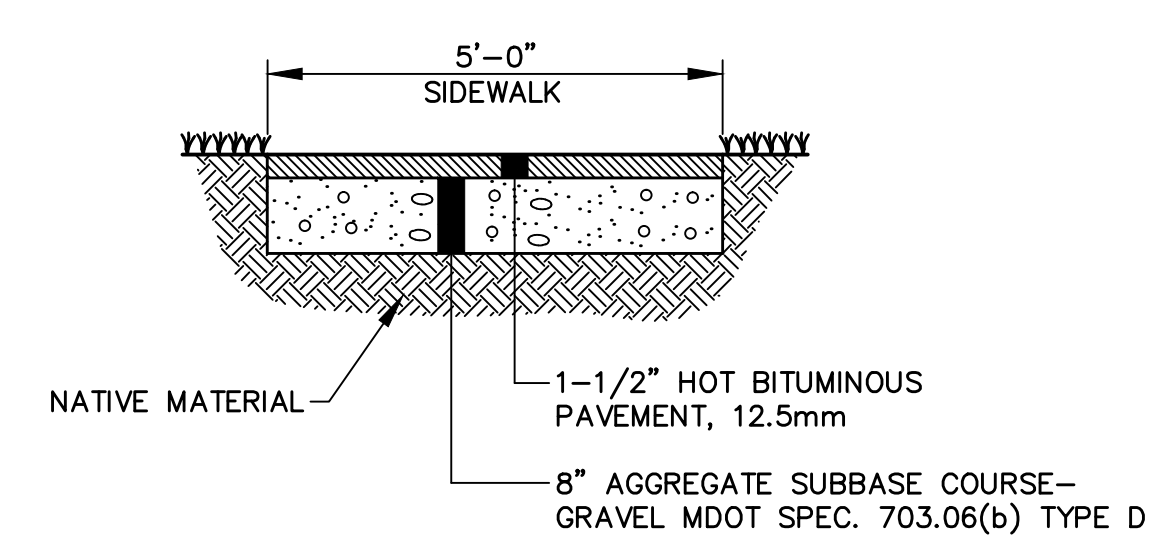
TYPICAL WATER SERVICE DETAIL
NOT TO SCALE



TYPICAL CITY SIDEWALK SECTION (IN R.O.W.)
NOT TO SCALE



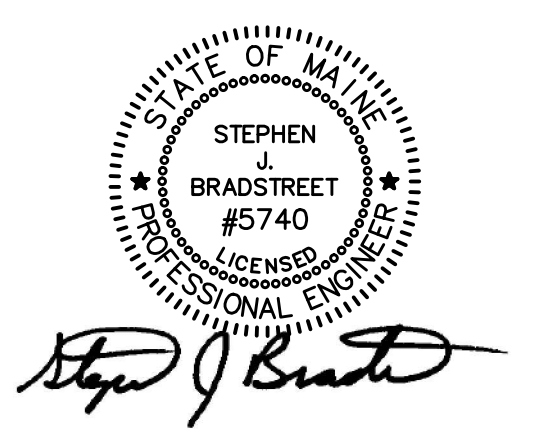
CHAIN LINK FENCE
NOT TO SCALE



TYPICAL SITE SIDEWALK SECTION
NOT TO SCALE

PROPOSED BUILDING
ACADEMY FOR
ACTIVE LEARNERS
134 WARREN AVENUE
PORTLAND, MAINE

Prepared for:
DELTA REALTY
380 WARREN AVENUE
PORTLAND, MAINE



CIVIL ENGINEER:
STEPHEN J. BRADSTREET, PE #5740
400 COMMERCIAL STREET, SUITE 404
PORTLAND, ME 04101
207-772-2891



400 Commercial Street, Suite 404
Portland, ME 04101
Tel. (207) 772-2891
Fax (207) 772-3248
www.ransomenv.com

CONSTRUCTION
DETAILS

No.	Revision/Issue	Date
C	RESPONSE TO CITY COMMENTS	02/19/16
B	RESPONSE TO CITY COMMENTS	01/25/16
A	PRELIMINARY REVIEW	12/01/15

Design by:	MPM	Checked by:	SJB
Drawn by:	JAR	Approved by:	SJB
Project:	151.06127	Date:	OCTOBER 2015

Sheet No: **C-103**
Sheet 6 of 9