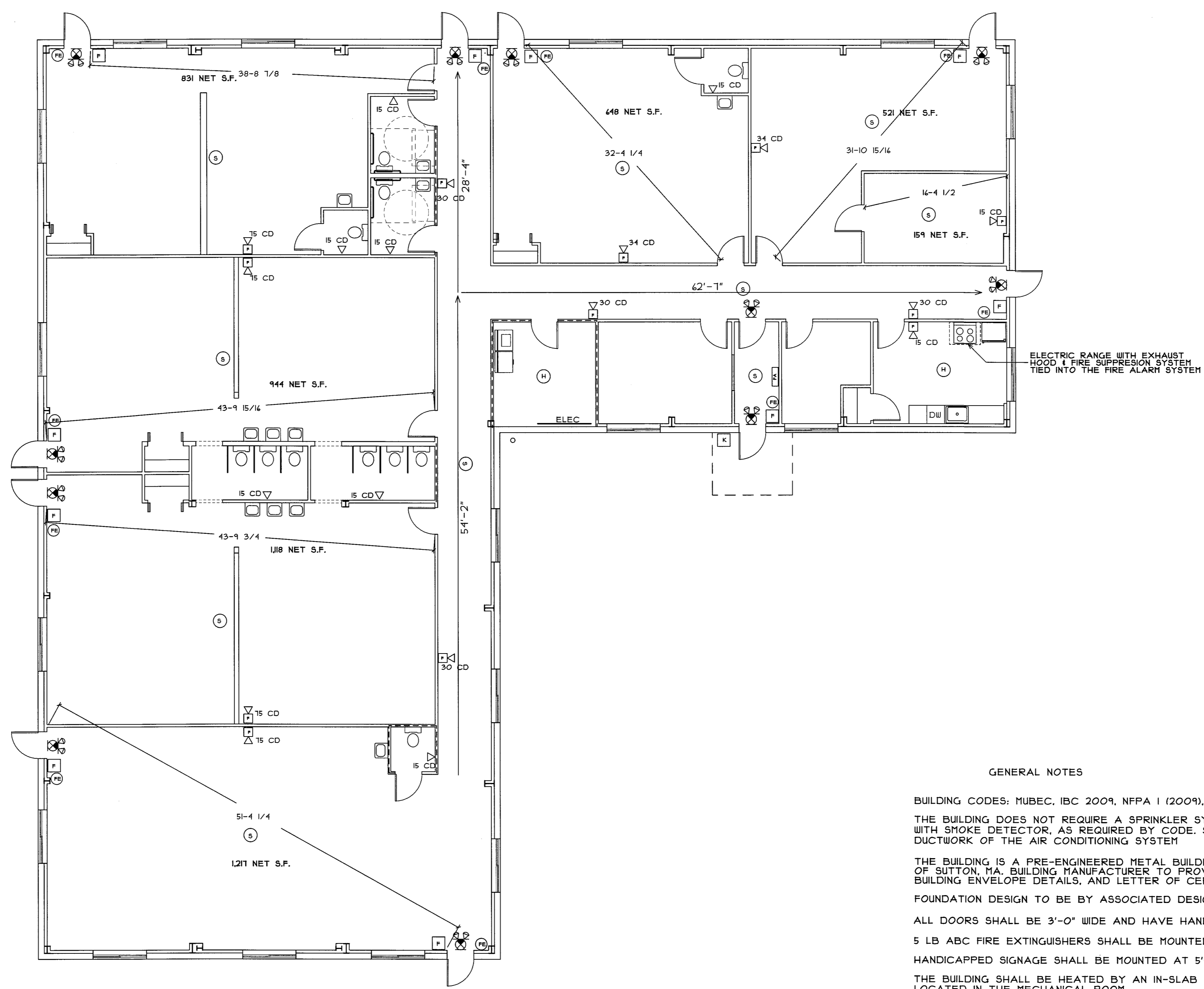


IBC 2009: CODE DATA	
OCCUPANT LOAD - TABLE 1004.1.1	NET AREA = 5,438 S.F.
USE GROUP CLASSIFICATION - SECTION 305.2 & 308.5.2 EXCEPTION	E
TYPE OF CONSTRUCTION - TABLE 601	II B
ACTUAL BUILDING AREA	1,908 S.F.
BUILDING AREA LIMITATION - TABLE 503	14,500 S.F.
STREET FRONTAGE INCREASE - 504.2	NA
AUTOMATIC SPRINKLER SYS. INCREASE - 504.3	NA
ALLOWABLE BUILDING AREA	14,500 S.F.
BUILDING HEIGHT LIMITATION - TABLE 503	2 STORY
ALLOWABLE BUILDING HEIGHT - WITH ALLOWABLE INCREASES	2 STORY
BUILDING HEIGHT	18'-0" 1 STORY
FIRE SUPPRESSION:	NONE SECTION 903.2.3
FIRE RESISTANT CONSTRUCTION:	NA
STRUCTURAL FRAME	NA
EXTERIOR BEARING WALLS	NA
INTERIOR BEARING WALLS	NA
CORRIDOR WALLS 1018.1 EXCEPTION #1	NOT REQUIRED
FIRE WALLS & PARTY WALLS	AS SHOWN
FLOOR CONSTRUCTION	NA
ROOF CONSTRUCTION	NA
STAIR ENCLOSURES	NA
EXIT ACCESS TRAVEL DISTANCE 1014	200' (NO SPRINKLER SYSTEM)
COMMON PATH OF TRAVEL - SEE NFPA 101-2009 TABLE A1.4	75' (NO SPRINKLER SYSTEM)
MINIMUM NUMBER OF EXITS - TABLE 1021	2
ACCESSORY USE 508.2.1 LESS THAN 10%	OFFICE & KITCHEN
FIRE EXTINGUISHERS - TABLE 904.3(1)	2-A, AS SHOWN
GENERAL NOTES	

NFPA 101: CODE DATA - 2009 EDITION	
OCCUPANT LOAD - TABLE 1.3.1.2	NET AREA = 5,438 S.F.
USE GROUP CLASSIFICATION 41.4	DAY CARE
TYPE OF CONSTRUCTION - TABLE 8.1	II (OOO)
ACTUAL BUILDING AREA	1,908 S.F.
BUILDING HEIGHT	18'-0" 1 STORY
FIRE SUPPRESSION:	NONE 16.1.4
FIRE RESISTANT CONSTRUCTION:	NA
STRUCTURAL FRAME	NONE
EXTERIOR BEARING WALLS	NONE
INTERIOR BEARING WALLS	NONE
EXTERIOR NONBEARING WALLS	NONE
CORRIDOR WALLS 16.3.4 (1)	NOT REQUIRED
MECHANICAL ROOM 16.3.2 (1) A	1 HR. REQUIRED
ROOF CONSTRUCTION	NA
STAIR ENCLOSURES	NA
TRAVEL DISTANCE FROM ROOM DOOR TO EXIT 16.2.4.2 (1)	150'
TRAVEL DISTANCE FROM ANY POINT IN ROOM TO EXIT 16.2.4.2 (2)	150'
TRAVEL DISTANCE FROM ANY POINT IN SLEEPING ROOM TO EXIT IN ROOM 16.2.4.2 (3)	50'
COMMON PATH OF TRAVEL - 16.2.5.3	75' (NO SPRINKLER SYSTEM)
MINIMUM NUMBER OF EXITS 16.2.4	2
ACCESSORY USE	NA
FIRE EXTINGUISHERS	2-A, AS SHOWN
GENERAL NOTES	

NFPA 1: CODE DATA - 2009 EDITION	
OCCUPANT LOAD - TABLE 14.8.1.2	NET AREA = 5,438 S.F.
USE GROUP CLASSIFICATION - SECTION 41.4	DAY CARE
TYPE OF CONSTRUCTION - TABLE A.12.2	II (OOO)
ACTUAL BUILDING AREA	1,908 S.F.
BUILDING HEIGHT	18'-0" 1 STORY
FIRE SUPPRESSION:	NONE
FIRE WALLS & PARTY WALLS	NA
COMMON PATH OF TRAVEL 14.0.1.1.4	75' (NO SPRINKLER SYSTEM)
MINIMUM NUMBER OF EXITS 14.9.1.1	2
FIRE FLOW TABLE 18.4.5.1.2	2,000 GPM
FIRE FLOW REDUCTION 18.4.5.2.1	0%
FIRE FLOW 18.4.5.2.1	2,000 GPM
MINIMUM NUMBER OF HYDRANTS TABLE 1.3	2 2450' SPACING
MAX. DISTANCE FROM HYDRANT TO STREET FRONTAGE TABLE 1.3	225'
ACTUAL DISTANCE FROM HYDRANT TO STREET FRONTAGE	AT PROPERTY LINE
FIRE EXTINGUISHERS - TABLE 13.4.8.2.1	2-A, AS SHOWN
GENERAL NOTES	

- MANUAL PULL STATION
- ADA HORN/STROBE
- ADA STROBE ONLY
- ALARM PANEL
- SMOKE DETECTOR
- EXIT SIGN
- EMERGENCY LIGHT PACK
- KNOX BOX
- FIRE EXTINGUISHER



**GENERAL NOTES**

BUILDING CODES: MUBEC, IBC 2009, NFPA 1 (2009), NFPA 10, NFPA 13, NFPA 101 (2006), IECC 2009

THE BUILDING DOES NOT REQUIRE A SPRINKLER SYSTEM, BUT WILL HAVE A FULL FIRE ALARM SYSTEM WITH SMOKE DETECTOR, AS REQUIRED BY CODE. SMOKE DUCTS SHALL BE INSTALLED IN THE DUCTWORK OF THE AIR CONDITIONING SYSTEM

THE BUILDING IS A PRE-ENGINEERED METAL BUILDING BY PACKAGE STEEL SYSTEMS, INC. OF SUTTON, MA, BUILDING MANUFACTURER TO PROVIDE STRUCTURAL DESIGN, BUILDING ENVELOPE DETAILS, AND LETTER OF CERTIFICATION.

FOUNDATION DESIGN TO BE BY ASSOCIATED DESIGN PROFESSIONALS

ALL DOORS SHALL BE 3'-0" WIDE AND HAVE HANDICAPPED LEVER TYPE HARDWARE

5 LB ABC FIRE EXTINGUISHERS SHALL BE MOUNTED AT EVERY EXIT

HANDICAPPED SIGNAGE SHALL BE MOUNTED AT 5'-0" A.F.F. AT ALL BATHROOMS AND EXITS

THE BUILDING SHALL BE HEATED BY AN IN-SLAB RADIANT HEAT SYSTEM, WITH WALL MOUNTED GAS BOILER LOCATED IN THE MECHANICAL ROOM.

THE BUILDING SHALL BE AIR CONDITIONED BY THREE AIR HANDLERS LOCATED ABOVE THE CEILING WITH COOLING COILS AND THE COMPANION CONDENSER LOCATED OUTSIDE THE BUILDING

SEPARATE PERMITS ARE REQUIRED FOR THE ELECTRICAL, HVAC, PLUMBING, AND FIRE ALARM SYSTEMS

**B C I**

**BISKUP CONSTRUCTION, INC.**  
 16 DANIELLE DRIVE  
 WINDHAM, MAINE 04042  
 TEL. (207) 892-9800  
 FAX. (207) 892-9895

WWW.BISKUPCONSTRUCTION.COM

STAMP

**J. M. STREETER**  
 ARCHITECTURAL  
 ENGINEER

44 CARSOE DRIVE  
 PORTLAND, MAINE 04103 (207) 797-3093

PROJECT:

**PROPOSED BUILDING  
 ACADEMY FOR ACTIVE LEARNERS  
 134 WARREN AVENUE  
 PORTLAND, MAINE**

REVISIONS	
DATE	DESCRIPTION

DATE: 2/24/2016  
 SCALE: 1/8" = 1'-0"  
 DESIGNER: JB  
 CHECKED BY: JB

© COPYRIGHT  
 BISKUP CONSTRUCTION, INC.

SHEET TITLE

**LIFE SAFETY  
 PLAN**

SHEET NUMBER

**A-2**

SHEET 2 OF 4