

Plant List for a Sunny Rain Garden

Plants for the wetter center of the garden:

Woody shrubs:
 SS: *Clethra alnifolia*, summersweet, 5-6 H x 4-6 W. Late-to-early bloom. Fragrant, large, white flower stalks in summer.

Perennials:
 CA: *Lobelia cardinalis*, cardinal flower, 2-4 H x 1 W. Bright red flowers from July to September.

T: *Asclepias tuberosa*, orange butterfly weed, 2-3 H x 2-3 W. Can handle dry areas. Orange blooms from June to September.

I: *Iris versicolor*, blue flag iris, 2-4 H x 2-4 W. Blue flowers in spring.

M: *Calla palustris*, marsh marigold, 5 H x 1 W. Glossy heart-shaped leaves with bright yellow flowers in the spring.

J: *Eupatorium maculatum*, Joe-pye-weed, 3-5 H x 1-2 W. Red stems, purple-red flowers from July to September.

SM: *Asclepias incarnata*, swamp milkweed, 2-3 H x 2-3 W. Will not tolerate drought. Showy, flat, reddish flowers from July to October.

Plants for the dryer outer edge of the garden:

Woody shrubs:
 P: *Potentilla arguta*, tall cinquefoil, 1-3 H x 1-3 W. Thick leaves and many white flowers all summer.

Perennials:
 D: *Geranium maculatum*, wild geranium, 1-2 H x 2 W or more. Purple flowers in the late spring and sometimes again in the fall. Pretty foliage.

A: *Anemone canadensis*, windflower, 2 H x 10 W. Pure white blossoms in June. Large, attractive leaves.

LO: *Lobelia spicata*, spiked lobelia, 3-5 H x 3-5 W. Blue flowers from June to August.

FA: *Symphoricarpos umbellatus*, flat-topped aster, 3-7 H x 3-7 W. White to yellowish-centered flowers in the fall.

AS: *Symphoricarpos noxia-anglica*, New England aster, 3-7 H x 3-7 W. Purple flowers in the fall.

H: *Helenium autumnale*, perennial sunflower, 3-5 H x 2-3 W. Lots of yellow flowers in the fall.

*Woody shrubs: Though they may shed their leaves, the woody structure of these plants will provide winter interest in the garden.

*Perennials: These plants die over the winter and sprout new shoots in the spring. Sometimes some of last year's foliage will survive the winter, but generally you should trim off the dead foliage in late fall and wait for the green growth of spring.

LEGEND

- BOUNDARY LINE
- EDGE OF PAVEMENT
- RIGHT-OF-WAY LINE
- ABUTTER
- EXISTING GRAVEL
- BUILDING SETBACK
- EXISTING CONTOUR
- EXISTING UTILITY POLE
- EXISTING SEWER MANHOLE
- EXISTING SEWER LINE
- EXISTING WATER LINE
- EXISTING WATER GATE VALVE
- EXISTING HYDRANT
- EXISTING CATCH BASIN
- EXISTING DRAIN LINE
- EXISTING GAS LINE
- EXISTING TREE LINE
- DRAINAGE FLOW

NOTES

1. THE PARCEL SURVEYED IS IDENTIFIED ON THE CITY OF PORTLAND TAX ASSESSOR'S MAP 289, BLOCK B, PARCEL 1-7 & 10.
2. THE PARCEL SURVEYED IS LOCATED IN THE B-4 BUSINESS ZONE/DISTRICT.
3. PORTIONS OF BULK AND SPACE REQUIREMENTS ARE AS FOLLOWS:

| | DECD/ALLOWED | PROVIDED |
|---------------------|--------------|------------------------|
| MINIMUM LOT AREA | 10,000 SF | 51,810.83 |
| MIN STREET FRONTAGE | 60 FT | 193.14 FT (WARREN AVE) |
| FRONT SETBACK | 20 FT | 21.4 FT |
| SIDE SETBACK | 20 FT | 45.3 FT |
| REAR SETBACK | 20 FT | 126.4 FT |
| MAX STRUCTURE HT | 65 FT | 35 FT |
4. PARKING - OFFICES 1 SPACE/400 SF
 PROPOSED FLOOR AREA = 3,330 SF
 SPACES REQ'D = 8,325 ÷ 2 SPACES PROVIDED = 25 SPACES
5. MAXIMUM IMPERVIOUS AREA RATIO - 50%
 PROPOSED IMPERVIOUS AREA RATIO - 30%

THIS PLAN IS FOR REVIEW PURPOSES ONLY AND IS NOT INTENDED FOR CONSTRUCTION OR RECORDING

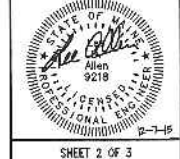
| Revised | By | Date | Change |
|---------|----|------|--------|
| | | | |

PROJECT NUMBER: 32208 ACAD FILE: 32208-SITE PARKING.DWG SCALE: 1" = 10' DATE: DECEMBER 7, 2015

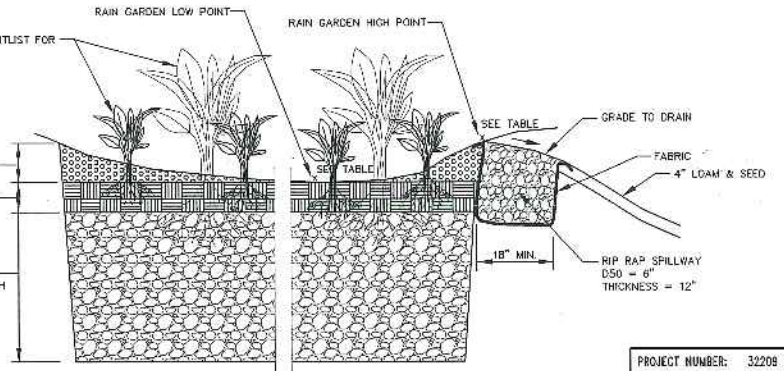
SITE PLAN

Project Name: **PARKING EXPANSION**
 171 WARREN AVE, PORTLAND, MAINE 04103

Client: **POULIN PROPERTY HOLDINGS, LLC**
 276 CANCO ROAD, PORTLAND, MAINE 04103



SURVEYING ENGINEERING LAND PLANNING
Northeast Civil Solutions
 INCORPORATED
 381 PAYNE ROAD, SCARBOROUGH, MAINE 04074
 Tel: 207.883.1000 Fax: 207.883.1001
 BOC: 882.2223 e-mail: info@northeastcivilsolutions.com



| RAIN GARDEN TABLE | | | | |
|-------------------|-------|-----------------|------------------|------------------|
| LENGTH | WIDTH | LOW POINT ELEV. | HIGH POINT ELEV. | INV. TO OVERFLOW |
| 20' | 10' | 100.5' | 101.5' | 101.1' |

ELEVATION
 TYPICAL RAIN GARDEN DETAIL
 N.T.S.

96.51' = 95.01'

E:\WORK PROJECT\32208\32208-POLIN-PROJ-WHOLE AVE AVE\PLANS\32208-SITE PARKING.DWG