

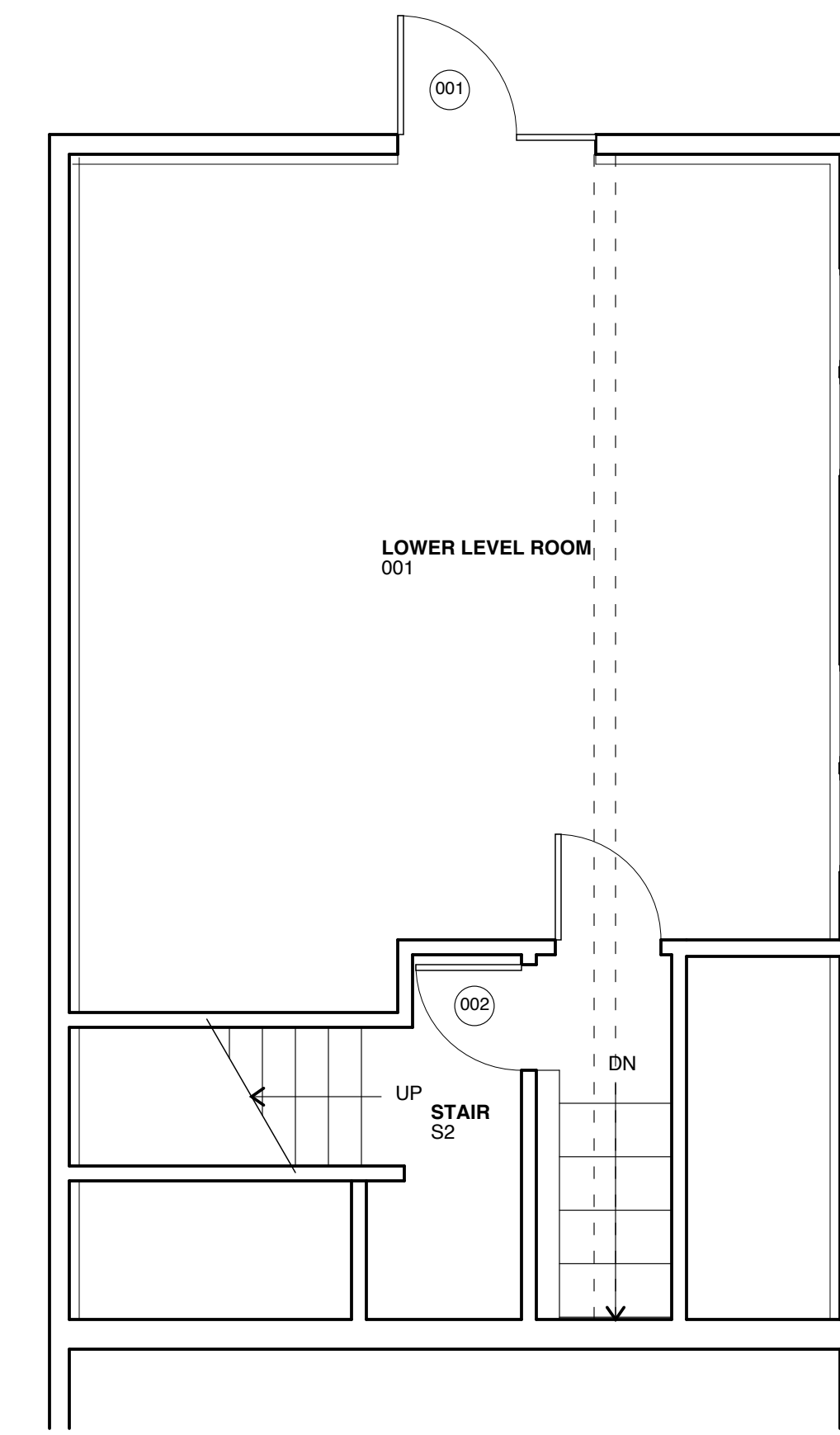


**1 NORTH ELEVATION**  
 SCALE: 1/4" = 1'-0"  
 1' 2' 4' 8'

NEW DOOR & SIDELIGHT IN EXISTING OPENING

NEW ADDITION

LANDSCAPE RAMP TO HERE



**3 PARTIAL BASEMENT PLAN**  
 SCALE: 1/4" = 1'-0"  
 1' 2' 4' 8'



**2 EAST ELEVATION**  
 SCALE: 1/4" = 1'-0"  
 1' 2' 4' 8'

NEW WINDOWS AT LOWER LEVEL

**Michael Charek Architects**  
 25 Hartley Street  
 Portland, Maine 04103  
 (207) 761-0556

**Offices for Poulin Financial Services**  
 171 Warren Avenue  
 Portland, ME 04103

**Title**  
 ELEVATIONS  
 N-E, PARTIAL  
 BASEMENT  
 PLAN

**Scale:** 1/4" = 1'-0"

**Date:** 10/1/10

**Revisions**

**Sheet**  
**A3**