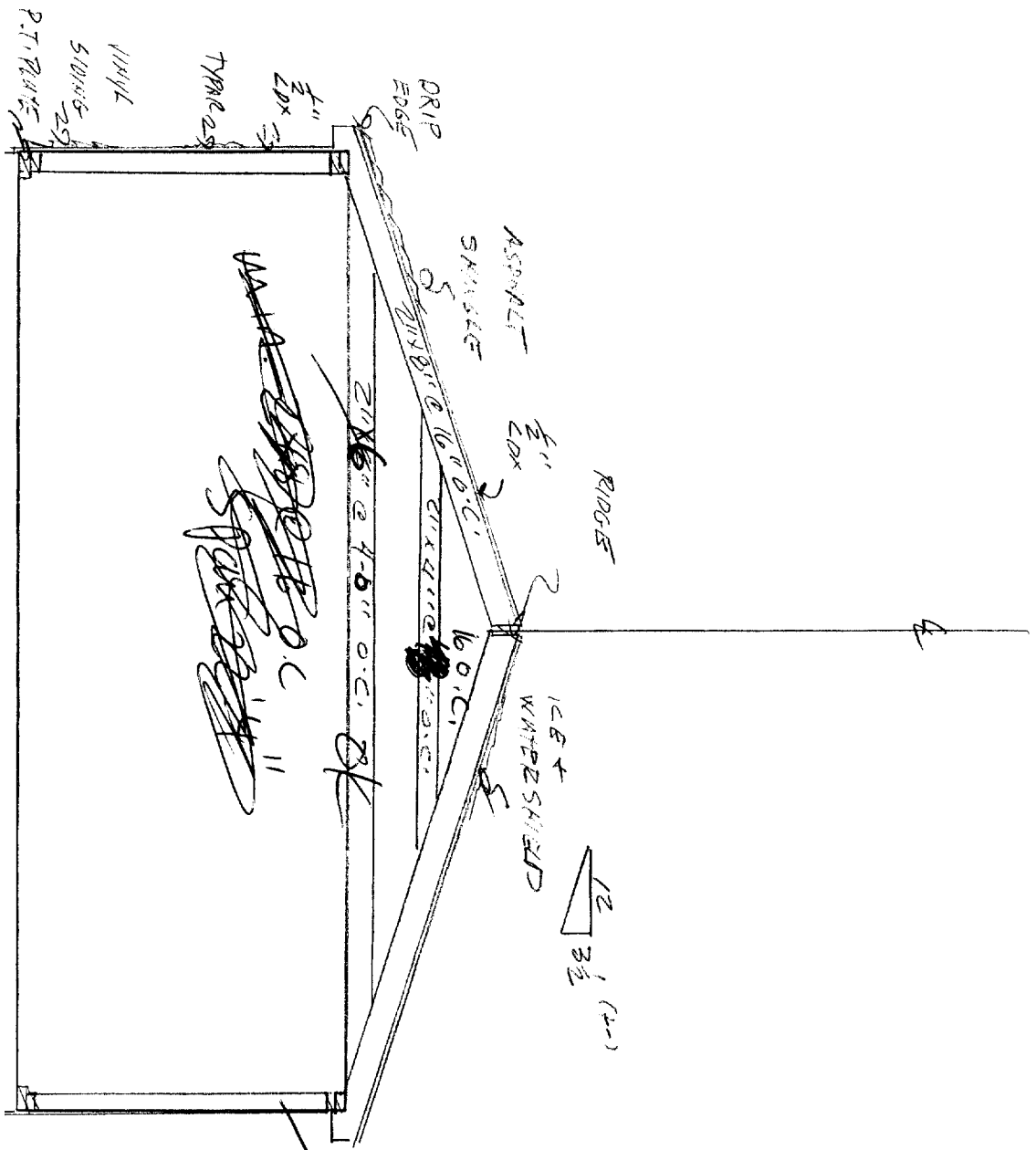
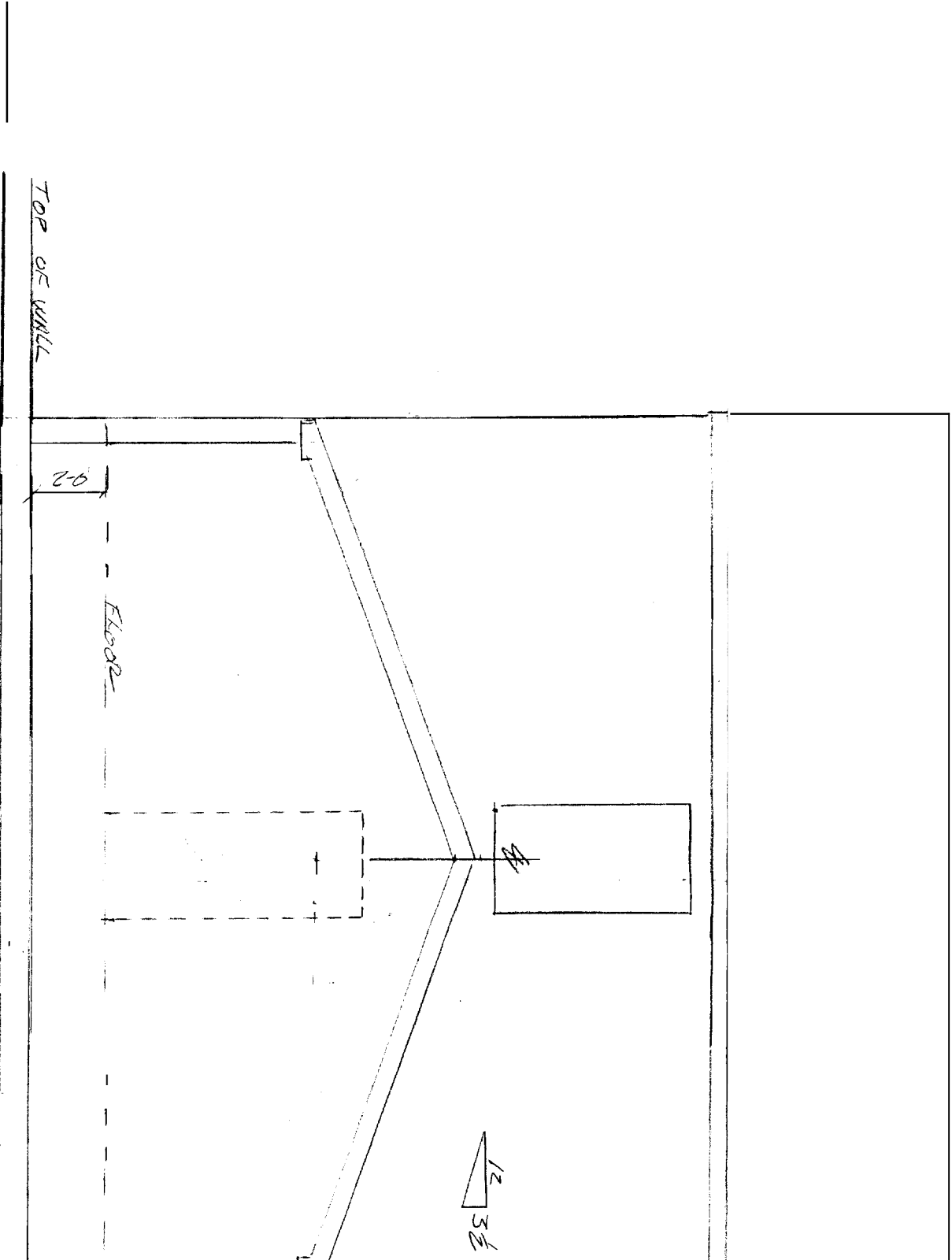



FROST
WALL 25

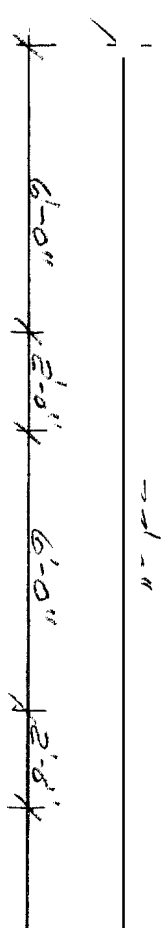
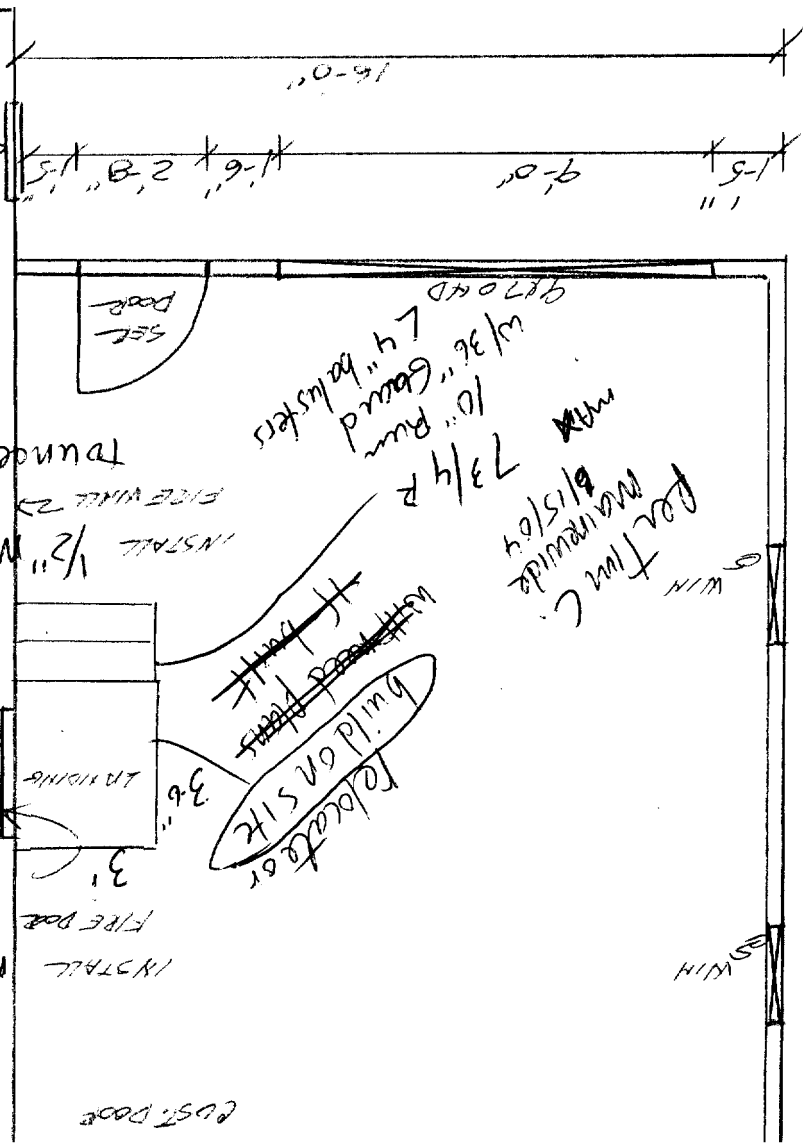
22'

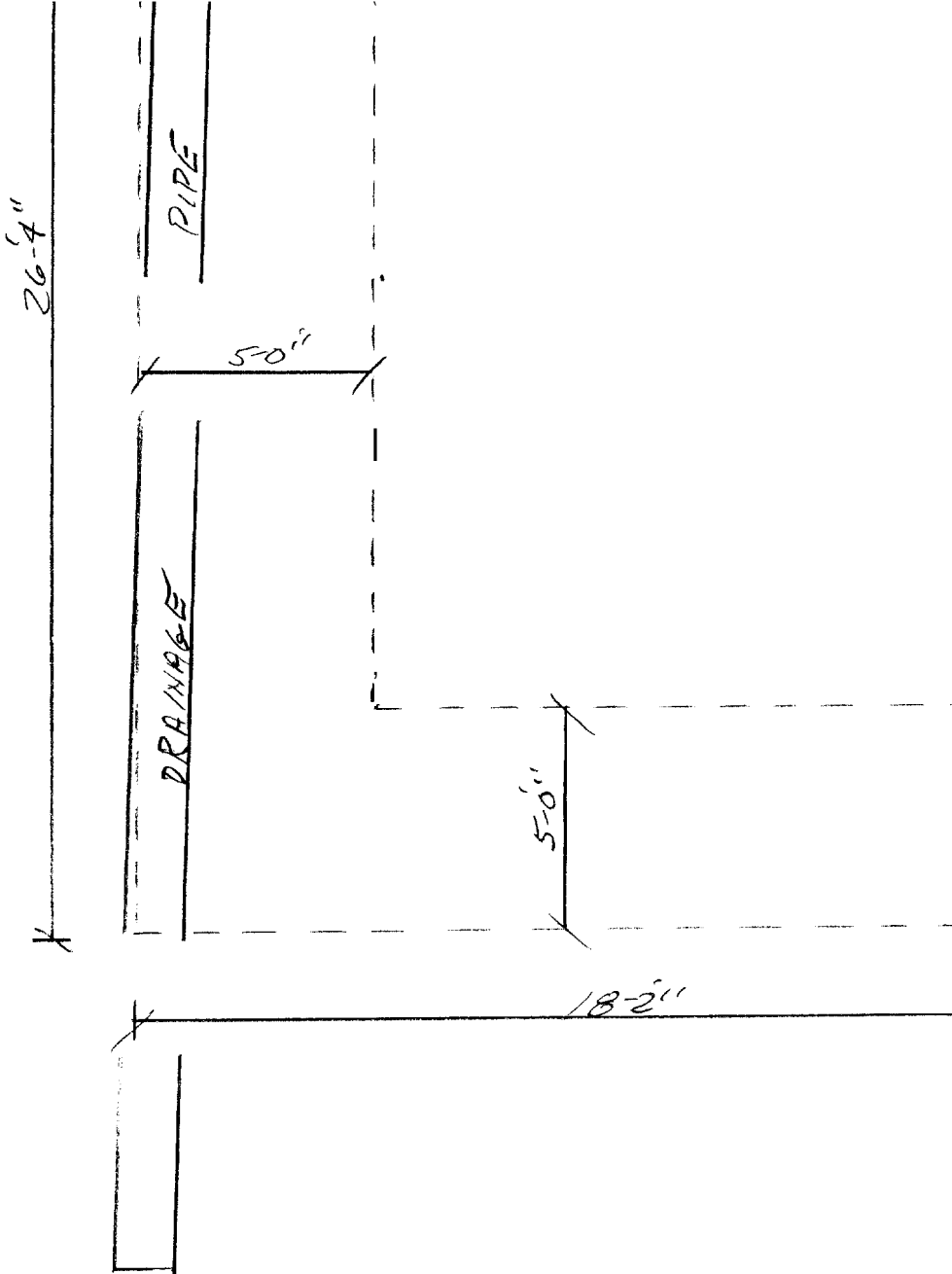


9



Location FORTLAND	
Drawn For T. SOH	
Date 5-26-04	Approved [Signature]
Scale 1/8" = 1'-0"	
	






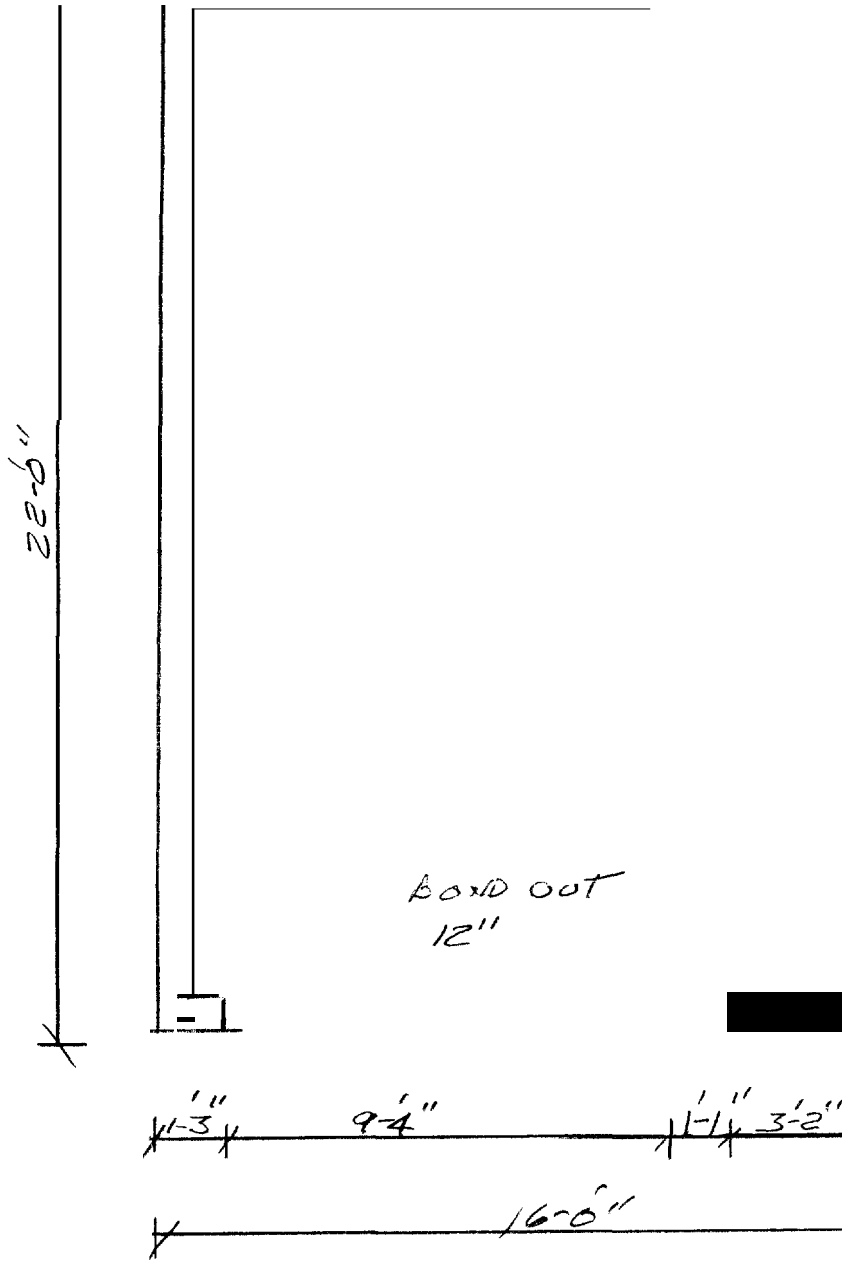
Job Number: 2004-421

Date: 05/27/04

SITE INSTRUCTIONS

1. Start hole 1'-6" beyond rear wall of house
2. Bottom of hole to be 7'-6" below finish floor of house - bottom of door stool
3. Excavate center of hole 3'-8" below finish floor of house
4. Back till w/ 1" minus or dead sand
5. Back fill must be compacted in 8' lifts
6. Back fill inside ewn w/ top of bondouts for OHD
7. Install window wall around cellar window & cover
8. There is a large drain pipe adjacent to site - pipe may have to be relocated
9. If you have any questions call Tim or Judy at 1-800-452-1940

 MAINE-1	
Scale <i>1/4" = 1'-0"</i>	Approved _____
Date <i>5-26-04</i>	<i>SITE</i>
Drawn For <i>T. SOX</i>	
Location <i>PORTLAND</i>	




Job Number: 2004-421

Date: 05/27/04

**FOUNDATION
INSTRUCTIONS**

1. Drill & pin foundation
2. Top of wall to be 2'-0" below finish floor of house (bottom of door stool)
3. Bondout for doors 12"
4. Start foundation 8" in from back wall of house
5. Set anchor bolts at corners - openings at 6'-0" OC
6. Leave nuts & washers on bolts
7. Pour 4" slab over top of bondouts
8. If you have any questions call Tim or Judy at 1-800-452-1940

 MAINE-V	
Scale 3/16" = 1'-0"	Approved _____
Date 5-26-04	FOOTING
Drawn For T. SOX	
Location PORTLAND	