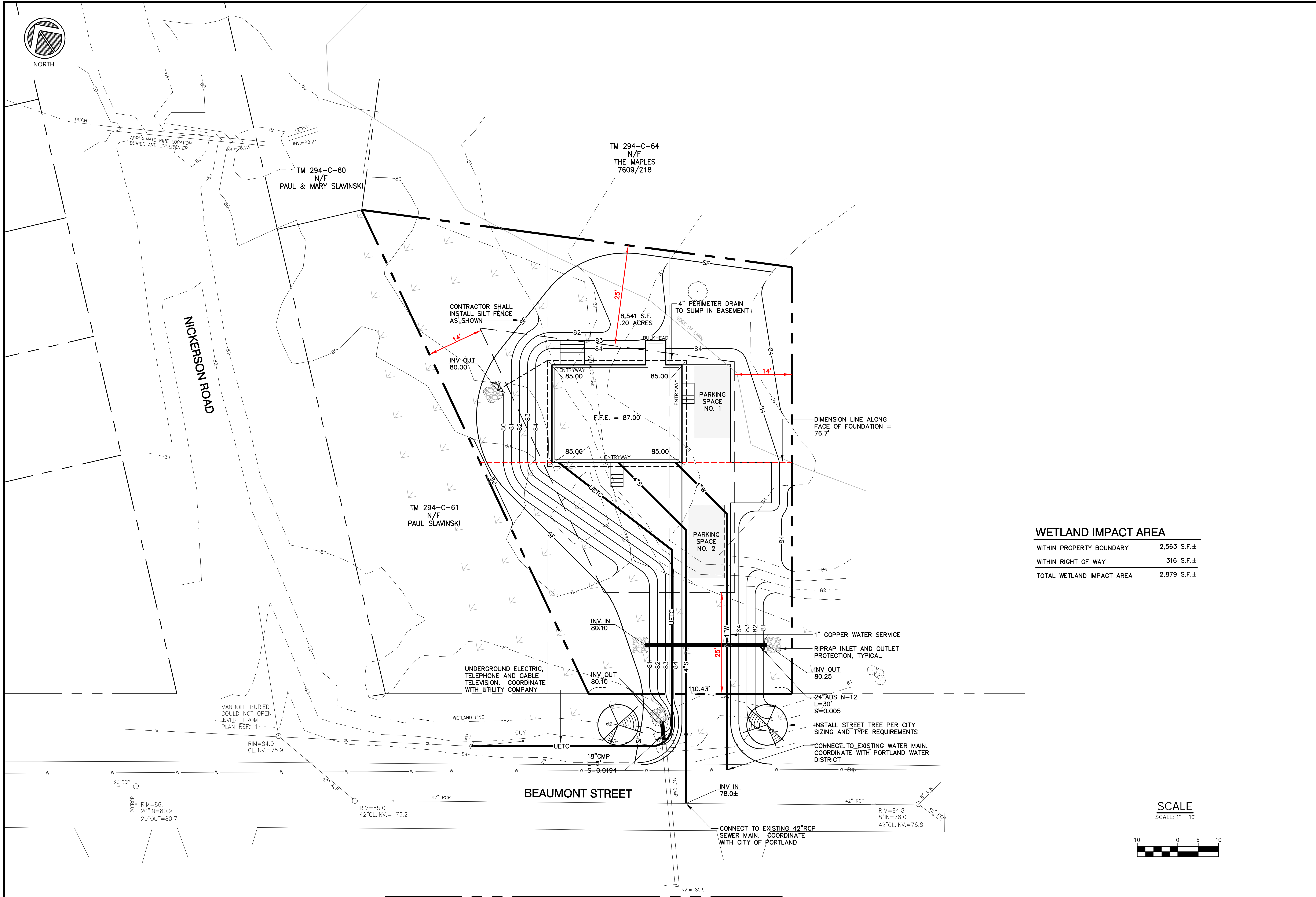




NORTH



WETLAND IMPACT AREA

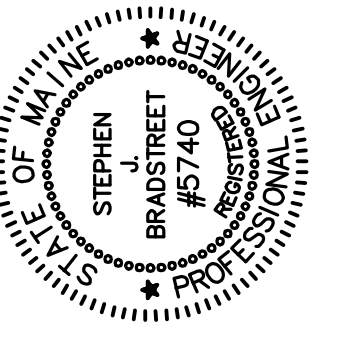
WITHIN PROPERTY BOUNDARY	2,563 S.F.±
WITHIN RIGHT OF WAY	316 S.F.±
TOTAL WETLAND IMPACT AREA	2,879 S.F.±

SCALE
SCALE: 1" = 10'



SITE PLAN

SCALE: (H)1" = 20' (V)1" = 4'



PROJECT DESIGNER:
**Edwards
AND Kelcey**
222 St. John Street, Suite 314
Portland, ME 04103
PHONE: (207) 828-1272
FAX: (207) 774-6907

PROJECT NO.: 060057151
E.K. FILE: 6151_c100.dwg
AIP NO.:

SCALE:	1" = 10'
DATE:	05-29-06
DESIGNED BY:	SJB
DRAWN BY:	JAR
CHECKED BY:	SJB
APPROVED:	SJB

BLUE HORSE PROPERTIES, LLC
PORTLAND, MAINE
BEAUMONT STREET SITE DEVELOPMENT

SITE PLAN

NO.	DATE	ISSUED FOR:	DESCRIPTION	BY
A				SJB

PROJ. NO.: 060057151
E.K. FILE: 6151_c100.dwg
AIP NO.:

DRAWING NO.

C-100
SHEET 1 OF 1