

52 Hicks St. Portland Me 04103

→ Finishing 2nd Floor by adding 2 bedrooms ←

1) Existing Door 29" x 70" (from step #1)

Propose removing to meet code 31" x 80"

2) Existing stairs

min rise: $7\frac{3}{4}$ " Throughout

min run: 9" nose to nose

overhang: $\frac{3}{4}$ "

width: min $37\frac{3}{4}$ Max $38\frac{1}{2}$

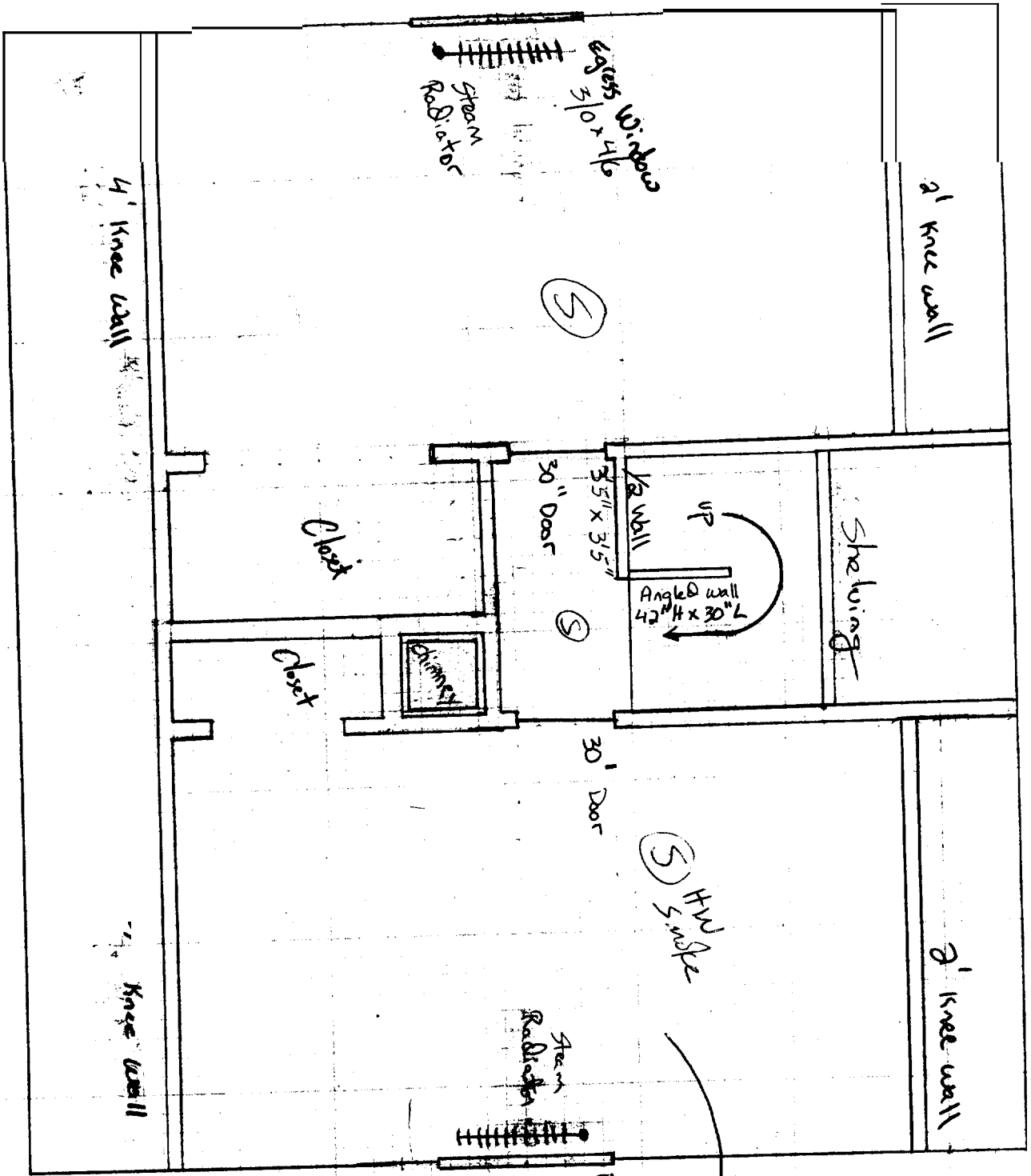
steps: 12 including top step

3) Framing: 2x4"

4) 495 sq ft added space

5) 9' ceiling height

2nd Floor Layout
Proposed



1 sq = 6"
Hicks Street

- Existing:
- stairs
 - Heating
 - windows
 - Insulation

→ may need scuttle if $\geq 30"$ in HT
dim of scuttle 22" x 30"

- New:
- 2 bedrooms + associated framing etc
 - Electrical
 - Egress Replacement Windows Each bedroom