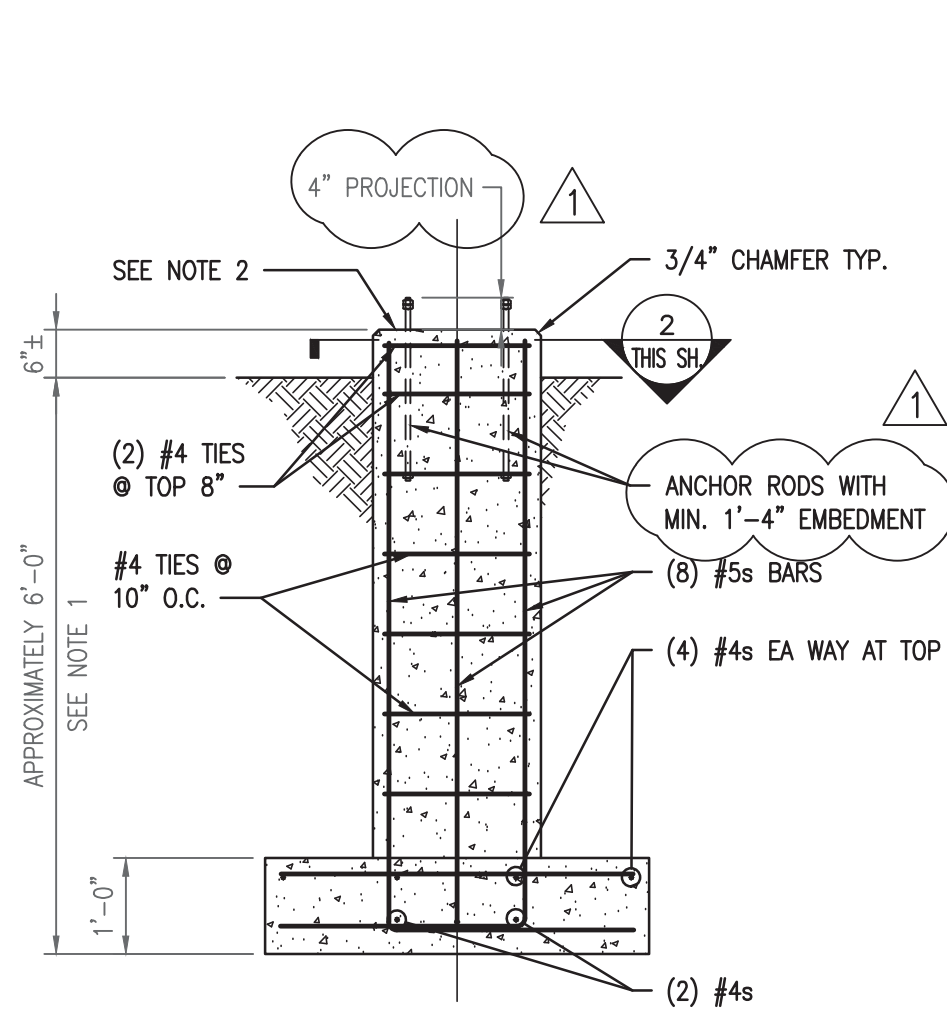


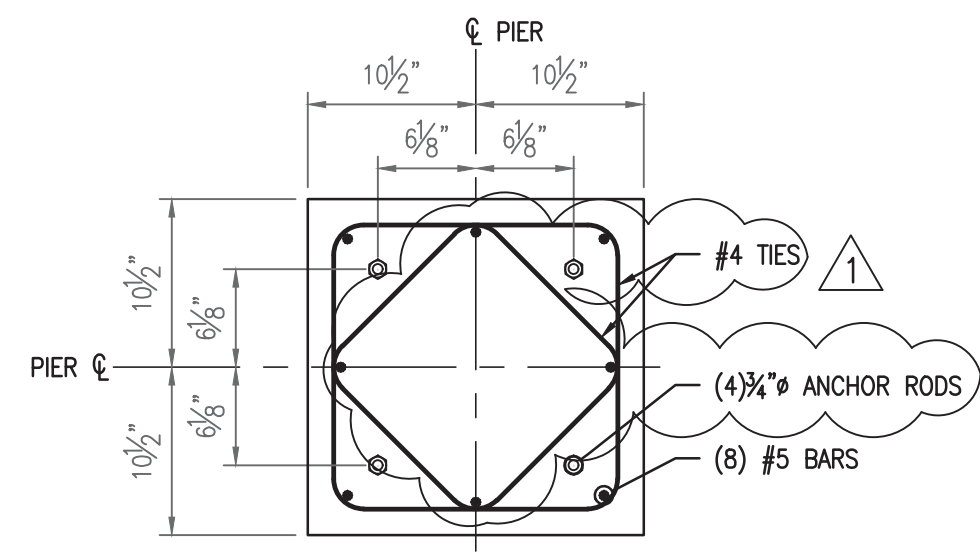
NO.	REVISION	DATE	BY	CK	P.E.

ENGINEERING CONSULTANT - LOGO - ADDRESS
SGC
 SGC ENGINEERING, LLC
 100 WATER ST.
 HALLOWELL, ME 04347

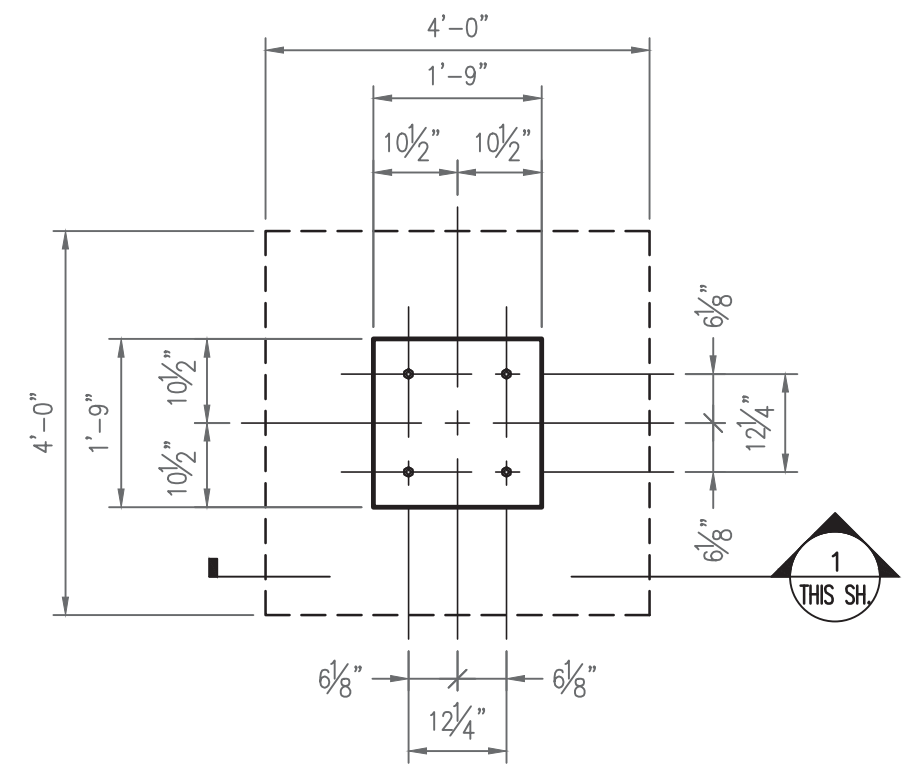
THIS DRAWING SHALL BE REVISED ON THE CADD SYSTEM ONLY



1 FOUNDATION SECTION
 THIS SH. SCALE: 1/2" = 1'-0"



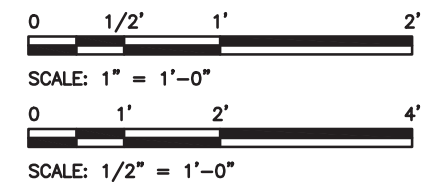
2 PIER DETAIL
 THIS SH. SCALE: 1" = 1'-0"



FOUNDATION PLAN
 SCALE: 1/2" = 1'-0"

GENERAL NOTES:

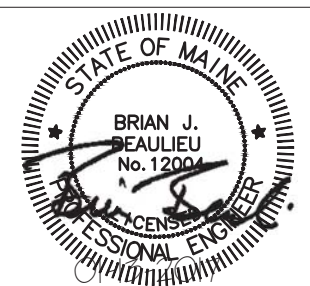
- FOUNDATION DEPTH SHALL MATCH DEPTH OF GAS CIRCUIT BREAKER FOUNDATION. SEE DRAWING 520-3-15 FOR BREAKER FOUNDATION INFORMATION.
- FOR ELEVATION OF TOP OF FOUNDATION, SEE FOUNDATION PLAN 520-37.
- CONCRETE MIX DESIGN:
 - STRENGTH: 4000 psi AT 28 DAYS
 - AGGREGATE: 3/4 INCH NOMINAL MAX.
 - W/C RATIO: 0.45 MAXIMUM
 - ENTRAINED AIR: 6% ±0.5%
 - SLUMP: 5 INCH ±1 INCH
- REINFORCING BARS SHALL CONFORM TO ASTM A615 GRADE 60 DEFORMED BARS AND SHALL BE DETAILED, FABRICATED AND PLACED IN ACCORDANCE WITH ACI 315, LATEST EDITION. WELDING OF REINFORCEMENT SHALL NOT BE PERMITTED.
- MINIMUM CONCRETE PROTECTIVE COVERING FOR REINFORCEMENT SHALL BE AS FOLLOWS UNLESS NOTED OTHERWISE:
 - SURFACES CAST AGAINST AND PERMANENTLY IN CONTACT WITH EARTH: 3"
 - FORMED SURFACES IN CONTACT WITH EARTH OR EXPOSED TO WEATHER: 2"
 - SURFACES NOT IN CONTACT WITH EARTH OR EXPOSED TO WEATHER: 1 1/2"
- ANCHOR ROD SHALL BE ASTM F1554 GRADE 36 STEEL WITH ASTM A563 HEAVY HEX NUTS AND F844 WASHERS. ALL ANCHOR RODS, NUTS, AND WASHERS SHALL BE HOT-DIP GALVANIZED.



This document and any attachments are considered:
BUSINESS CONFIDENTIAL
PROTECTED CRITICAL INFRASTRUCTURE INFORMATION

REFERENCE DRAWINGS	
520-3-11	SITE PLAN
520-37	FOUNDATION PLAN

NO.	REVISION	DATE	BY	CK	P. E. STAMPED BY	P. E. No.
1	REVISED PER COMMENTS	01/13/17	AKG	BJB	BJB	12004
0	ISSUED FOR CONSTRUCTION	12/30/16	AKG	BJB	BJB	12004



DESIGNED	AKG
DRAWN	TJG
CHECKED	BJB
APPROVED	BJB
REVIEWED	

FOUNDATION DETAIL FOR
 33KV BUS STRUCTURE-MODIFIED PIER
 BISHOP ST. 34KV S/S

CENTRAL MAINE POWER COMPANY
 SYSTEM ENGINEERING
 DATE: 12/27/16
 SCALE: AS NOTED

520-03-18
 REV 1