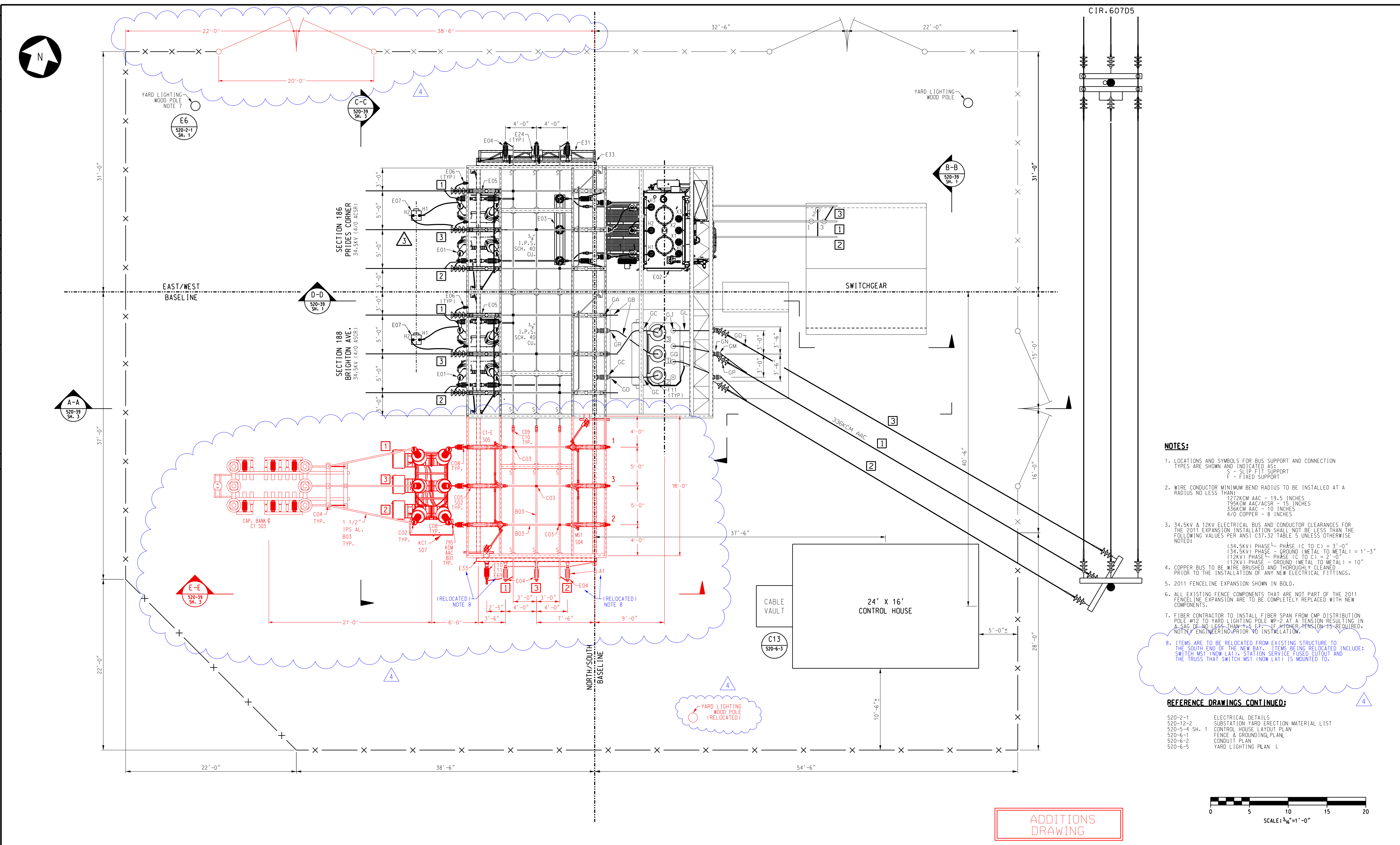


NO.	REVISION	DATE	BY	CK

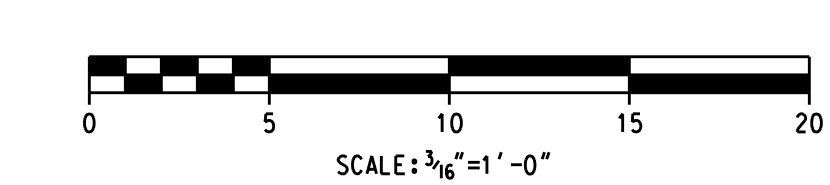
ENGINEERING CONSULTANT - LOGO - ADDRESS  
**SGC ENGINEERING, LLC**  
 100 WATER ST.  
 HALLLOWELL, ME 04347

THIS DRAWING SHALL BE REVISED ON THE CAD SYSTEM ONLY



- NOTES:**
- LOCATIONS AND SYMBOLS FOR BUS SUPPORT AND CONNECTION TYPES ARE SHOWN AND INDICATED AS:  
 S - SLIP FIT SUPPORT  
 F - FIXED SUPPORT
  - WIRE CONDUCTOR MINIMUM BEND RADIUS TO BE INSTALLED AT A RADIUS NO LESS THAN:  
 127KCM AAC - 19.5 INCHES  
 795KCM AAC/ACSR - 15 INCHES  
 336KCM AAC - 10 INCHES  
 4/0 COPPER - 8 INCHES
  - 34.5KV & 12KV ELECTRICAL BUS AND CONDUCTOR CLEARANCES FOR THE 2011 EXPANSION INSTALLATION SHALL NOT BE LESS THAN THE FOLLOWING VALUES PER ANSI C37.32 TABLE 5 UNLESS OTHERWISE NOTED:  
 134.5KV PHASE - PHASE (C TO C) = 3'-0"  
 134.5KV PHASE - GROUND (METAL TO METAL) = 1'-3"  
 12KV PHASE - PHASE (C TO C) = 2'-0"  
 12KV PHASE - GROUND (METAL TO METAL) = 10" PRIOR TO THE INSTALLATION OF ANY NEW ELECTRICAL FITTINGS.
  - COPPER BUS TO BE WIRE BRUSHED AND THOROUGHLY CLEANED PRIOR TO THE INSTALLATION OF ANY NEW ELECTRICAL FITTINGS.
  - 2011 FENCELINE EXPANSION SHOWN IN BOLD.
  - ALL EXISTING FENCE COMPONENTS THAT ARE NOT PART OF THE 2011 FENCELINE EXPANSION ARE TO BE COMPLETELY REPLACED WITH NEW COMPONENTS.
  - FIBER CONTRACTOR TO INSTALL FIBER SPAN FROM CMP DISTRIBUTION POLE #12 TO YARD LIGHTING POLE WP-2 AT A TENSION RESULTING IN A SAG OF NO LESS THAN 1.5 FT. IF HIGHER TENSION IS REQUIRED, NOTIFY ENGINEERING PRIOR TO INSTALLATION.
  - ITEMS ARE TO BE RELOCATED FROM EXISTING STRUCTURE TO THE SOUTH END OF THE NEW BAY. ITEMS BEING RELOCATED INCLUDE: SWITCH MS1 (NOW LA1), STATION SERVICE FUSED CUTOFF AND THE TRUSS THAT SWITCH MS1 (NOW LA1) IS MOUNTED TO.

- REFERENCE DRAWINGS CONTINUED:**
- 520-2-1 ELECTRICAL DETAILS
  - 520-12-2 SUBSTATION YARD ERECTION MATERIAL LIST
  - 520-5-4 SH. 1 CONTROL HOUSE LAYOUT PLAN
  - 520-6-1 FENCE & GROUNDING PLAN
  - 520-6-2 CONDUIT PLAN
  - 520-6-5 YARD LIGHTING PLAN L



**ADDITIONS DRAWING**

This document and any attachments are considered:  
**BUSINESS CRITICAL**  
**PROTECTED CRITICAL INFRASTRUCTURE INFORMATION**

NO.	REVISION	DATE	BY	CK	P. E. STAMPED	P. E. No.
4	ISSUED FOR CONSTRUCTION	08/15/16	SGC	SGC	NDT	13599
3	As-Built Drawing 2012 Const	05/23/12	TRC	TRC	GLB	10141
2	IFC Re-Issue For Const 2012	01/20/12	TRC	TRC	MJS	10130
1	IFC Re-Issue For Const 2011	10/24/11	TRC	TRC	GLB	10141
0	IFC Issue For Const 2011	10/21/11	TRC	TRC	MJS	10130

**REFERENCE DRAWINGS**

520-37	FOUNDATION PLAN
520-39	GENERAL ARRANGEMENT PLAN & SECTIONS
520-012-005	SUBSTATION MATERIAL LIST
520-1-2	AREA PHASING DIAGRAM
520-36	POWER ONE LINE DIAGRAM
520-39 SH. 1	GENERAL ARRANGEMENT PLAN & SECTIONS

NO.	REVISION	DATE	BY	CK	P. E. STAMPED	P. E. No.

Professional Engineer Seal

DESIGNED: MJS  
 DRAWN: MJS  
 CHECKED: MPB  
 APPROVED: MPB  
 REVIEWED: MPB

**GENERAL ARRANGEMENT PLAN & SECTIONS**  
**BISHOP ST. S/S**

PORTLAND MAINE

**CENTRAL MAINE POWER COMPANY**  
 SYSTEM ENGINEERING

DATE: 12/02/1999  
 SCALE: 3/16"=1'-0"

**520-39 SH. 2**  
 REV 4