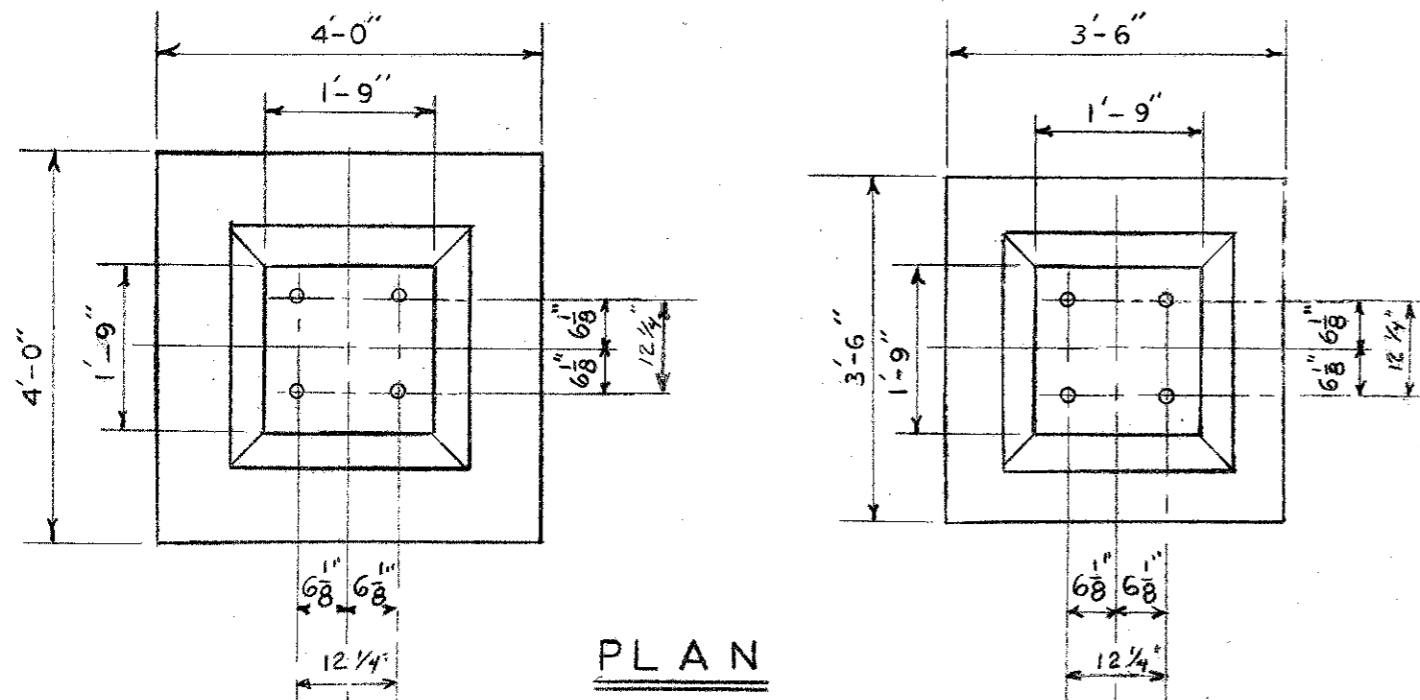


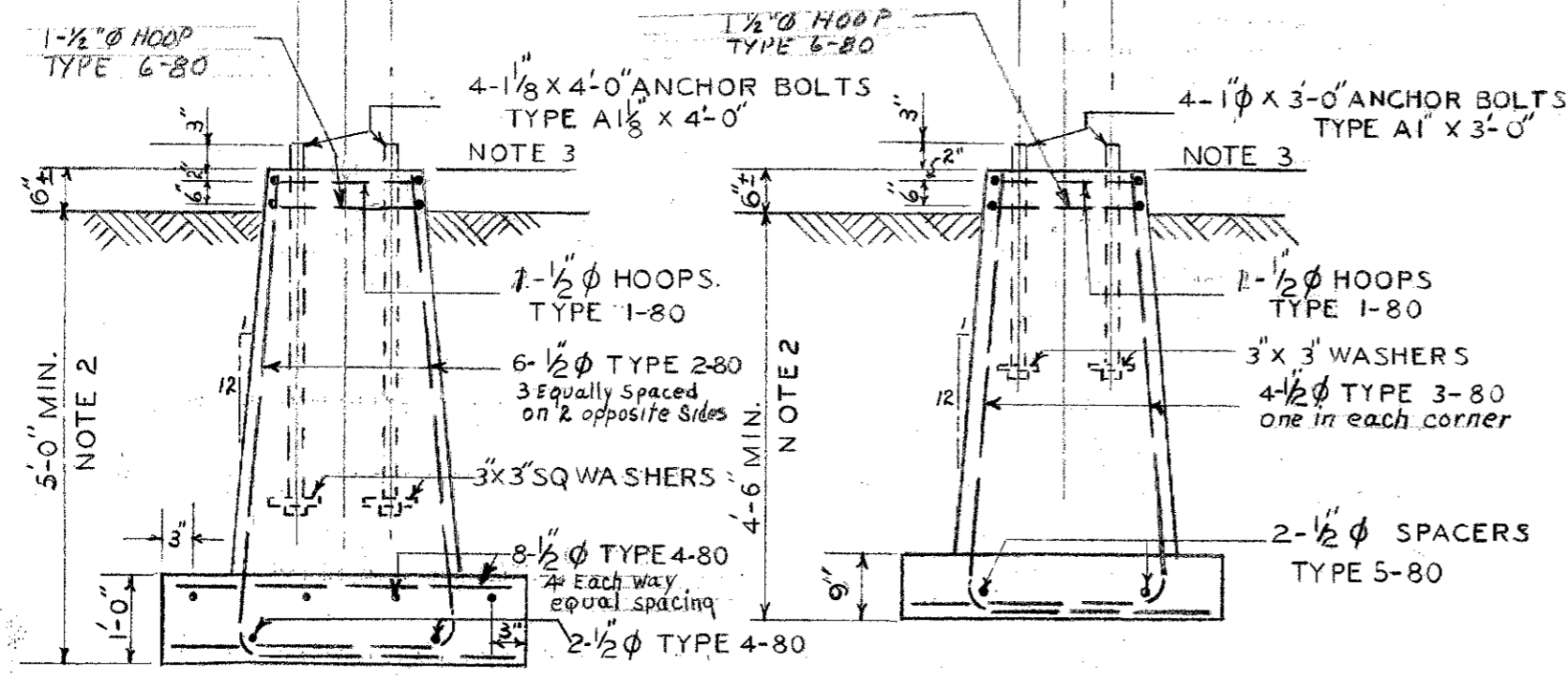
Fig. 1 15000# Gross Uplift (Not Incl. Concrete)  
For Manchester Forms 18" Sq. Top Were Used 2-10-39

Fig. 2. Bearing Pier only

Checked Rev 5 1-23-61 RPK



**PLAN**



**FIG. 1**  
Approx 37 Cu. Ft. Per Pier  
67 lbs. REINFORCING

**FIG. 2**  
Approx. 29 Cu. Ft. Per Pier  
32 lbs. REINFORCING

**REINFORCEMENT SCHEDULE**

TYPE NO.	LOCATION	NUMBER OF UNITS	PER UNIT	TOTAL REQD.	SIZE	LENGTH	BENDING DIAGRAM	TOTAL LENGTH'	
								Fig 1	Fig 2
1-80	FIG. 1 & 2	1	1	1	1/2" φ	6'-3"		6'-3"	6'-3"
6-80	FIG. 1 & 2	1	1	1	1/2" φ	6'-7"		6'-7"	6'-7"
2-80	FIG. 1	6	6	6	1/2" φ	8'-2"		49'-0"	
3-80	FIG. 2	4	4	4	1/2" φ	7'-2"			28'-8"
4-80	FIG. 1	10	10	10	1/2" φ	3'-10"	STRAIGHT	38'-4"	
5-80	FIG. 2	2	2	2	1/2" φ	3'-2"	STRAIGHT		6'-4"
TOTALS								100'-2"	47'-6"

**FOUNDATION BOLTS**

1 1/2" x 4'-0" FIG. 1	4	1 1/2" φ	4'-0"	WITH 3" x 3" x 1/4" SQ. WASHERS, SQ. NUT BOTTOM END & GALV. HEX NUT TOP END, THREAD ENDS 3" & GALV. TOP END 15". SEE 25-122
1" x 3'-0" FIG. 2	4	1" φ	3'-0"	WITH 3" x 3" x 1/4" SQ. WASHERS, OTHERWISE SAME AS ABOVE. SEE 25-122

THE ABOVE MATERIAL COVERS ONE COMPLETE PIER

**NOTES:**

1. BEVEL ALL EXPOSED EDGES 1".
2. DEPTH SHOWN IS MINIMUM. CARRY FOUNDATIONS DOWN TO SATISFACTORY BEARING.
3. FOR ELEVATION OF TOP OF FOUNDATION, SEE STATION "FOUNDATION & GRADING PLAN".

FIG. 1 - 10,000# UPLIFT  
FIG. 2 - BEARING PIER ONLY

25-160 20000#  
SEE ALSO 25-31 FOR HEAVY FOOTINGS-40000#

DES.	NO.	REVISION	DATE	BY
DR. BP	1	TRACED	12-24-41	BP
TR. LMB	2	CHD. ANCHOR BOLT TYPE 4-1-46		
CK. BP	3	1 1/2" ANCHOR BOLTS CHANGED TO 1" FIG. 1	4-18-47	
APPR.	4	FIG. 1 ANCHOR BOLTS CHANGED BACK TO 1 1/2"	1-12-48	
	5	REDRAWN	12-30-60	WAG
	6			

**FOUNDATION DETAILS FOR 33KV. BUS STRUCTURE SUBSTATIONS GENERAL**

CENTRAL MAINE POWER COMPANY  
ENGINEERING DEPARTMENT

SCALE 1/2" = 1'-0" DATE 9-29-38

25-80

5 8/19/99