



RESIDENTIAL
DESIGN INC

DESIGNERS
CONSULTANTS
CONSTRUCTION
DRAWINGS

P.O. BOX 67
CONWAY, NH 03818
978-928-5581
RESIDENTIALDESIGNINC.COM

AI
BD AMERICAN INSTITUTE
OF BUILDING DESIGN
NORTHEAST

PROJECT

FALMOUTH
FORESIDE LLC

DUPLEX
DESIGN

21 MAYFIELD ST
PORTLAND, ME

SHEET TITLE

ELEVATIONS

DATE
10-28-2014

REVISIONS

SHEET
NUMBER

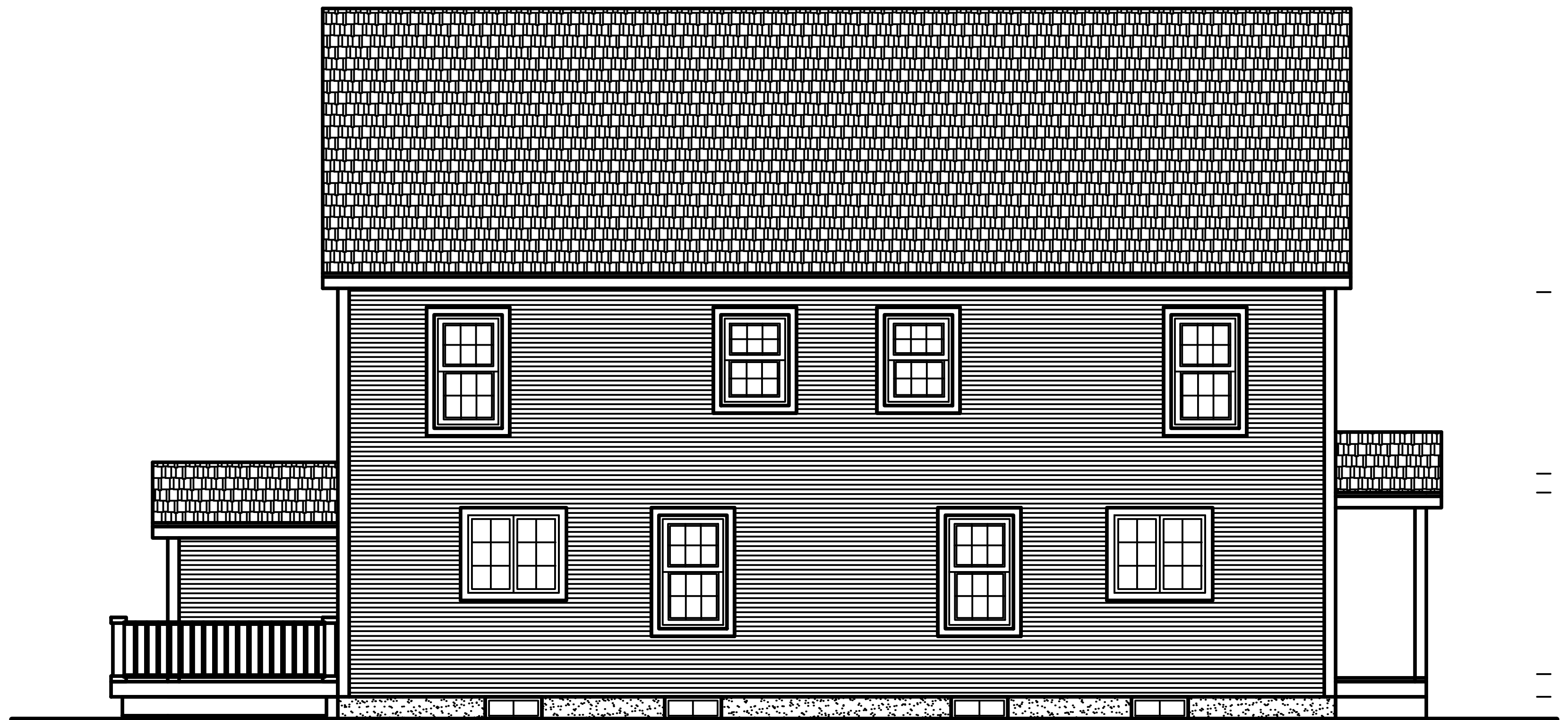
A-7



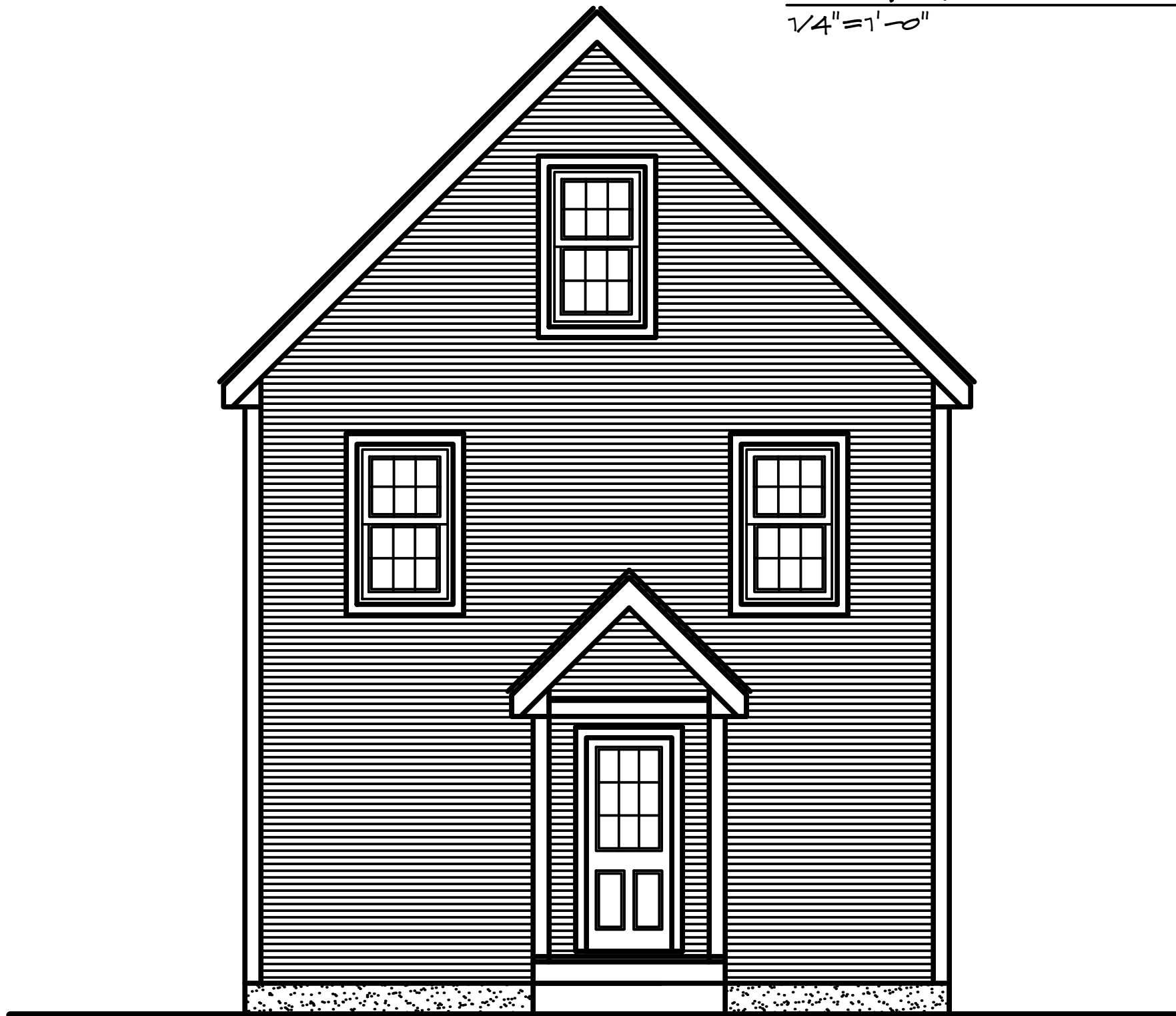
FRONT ELEVATION
1/4"=1'-0"



RIGHT ELEVATION
1/4"=1'-0"



REAR ELEVATION
1/4"=1'-0"



LEFT ELEVATION
1/4"=1'-0"