



RESIDENTIAL  
DESIGN INC

DESIGNERS  
CONSULTANTS  
CONSTRUCTION  
DRAWINGS

P.O. BOX 67  
CONWAY, NH 03818  
978-928-5581  
RESIDENTIALDESIGNINC.COM

AI  
BD AMERICAN INSTITUTE  
OF BUILDING DESIGN  
NORTHEAST

PROJECT

FALMOUTH  
FORESIDE LLC

DUPLEX  
DESIGN

21 MAYFIELD ST  
PORTLAND, ME

SHEET TITLE

ELEVATIONS

DATE  
10-28-2014

REVISIONS

SHEET  
NUMBER

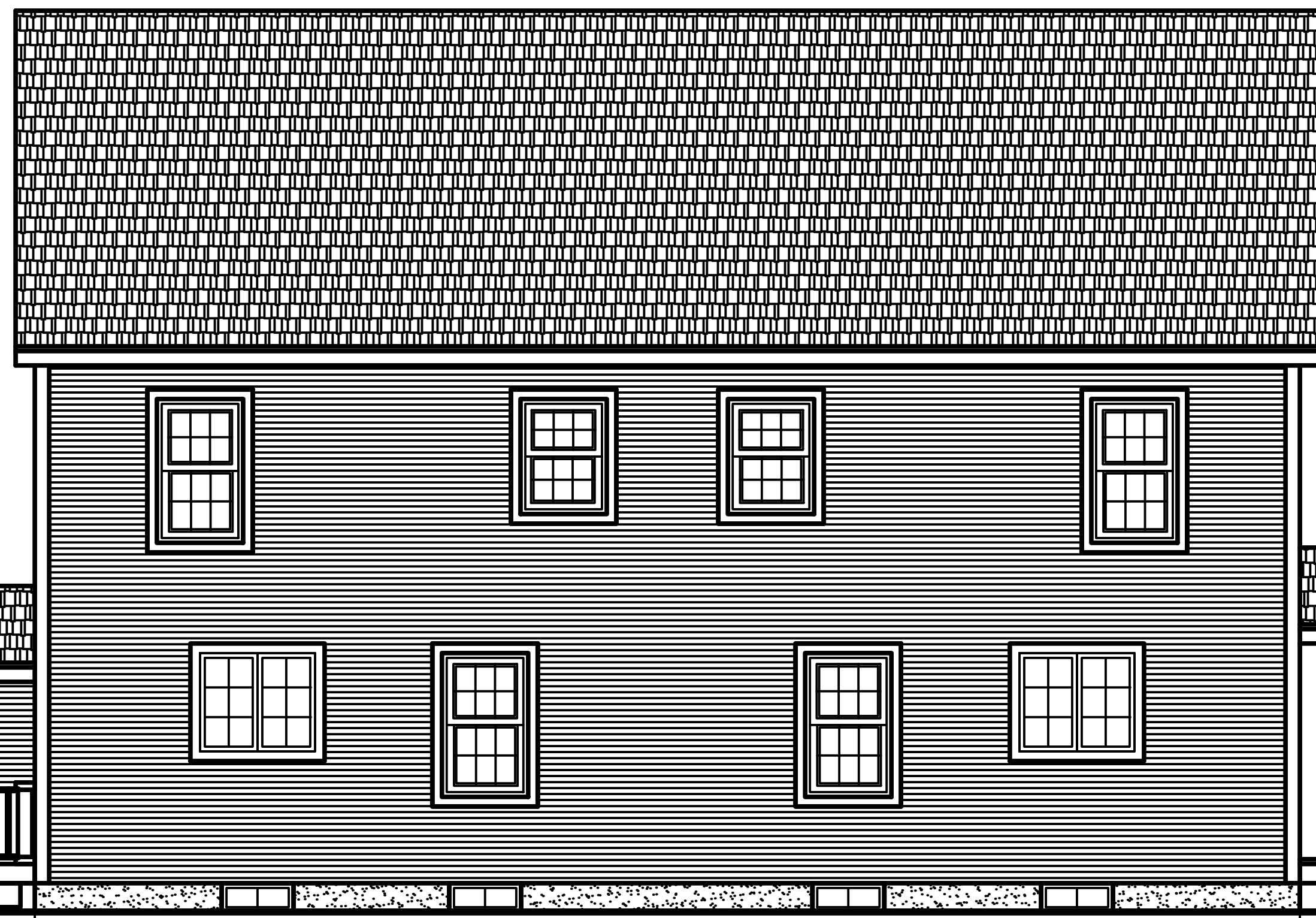
A-7



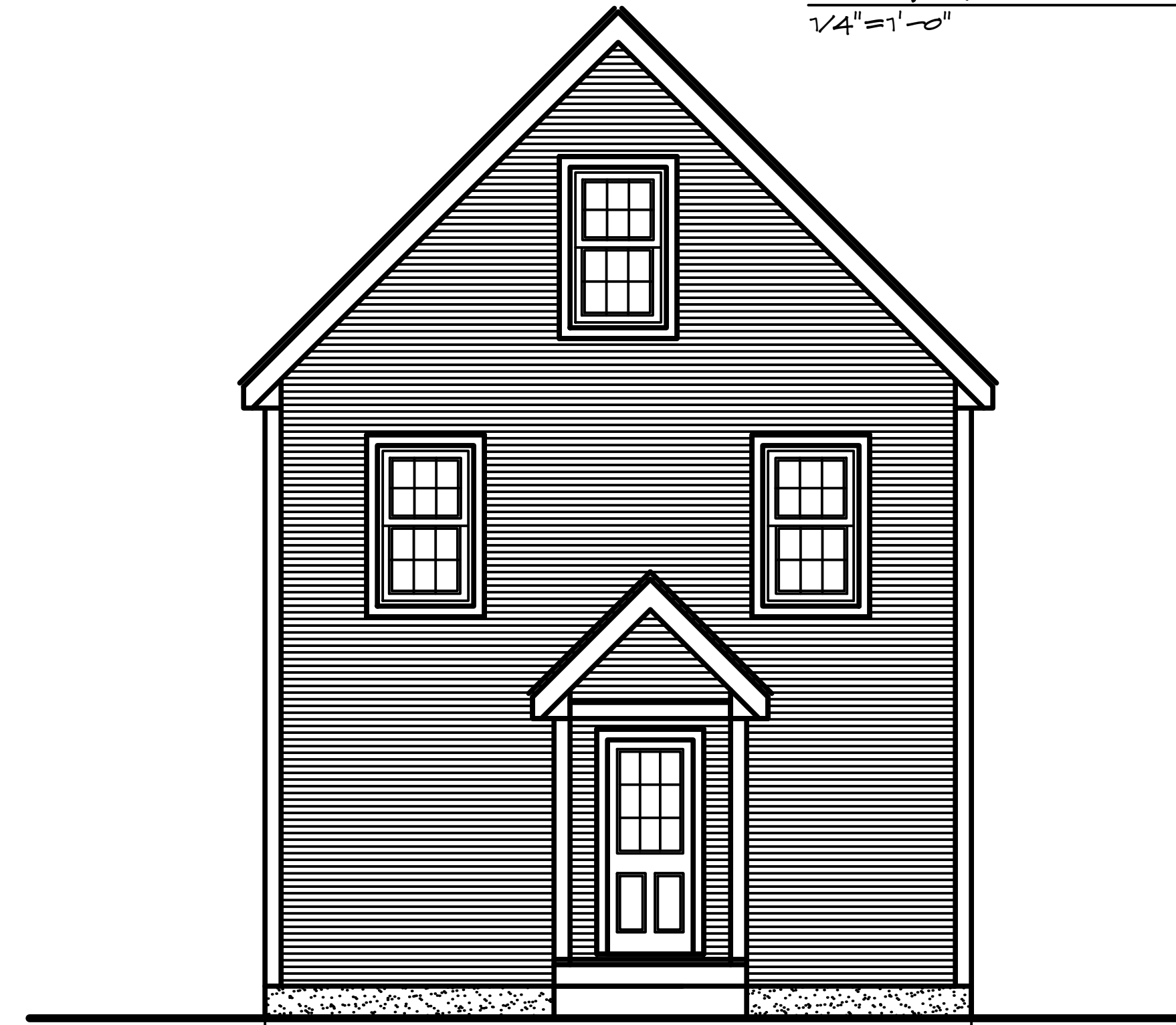
FRONT ELEVATION  
1/4"=1'-0"



RIGHT ELEVATION  
1/4"=1'-0"



REAR ELEVATION  
1/4"=1'-0"



LEFT ELEVATION  
1/4"=1'-0"