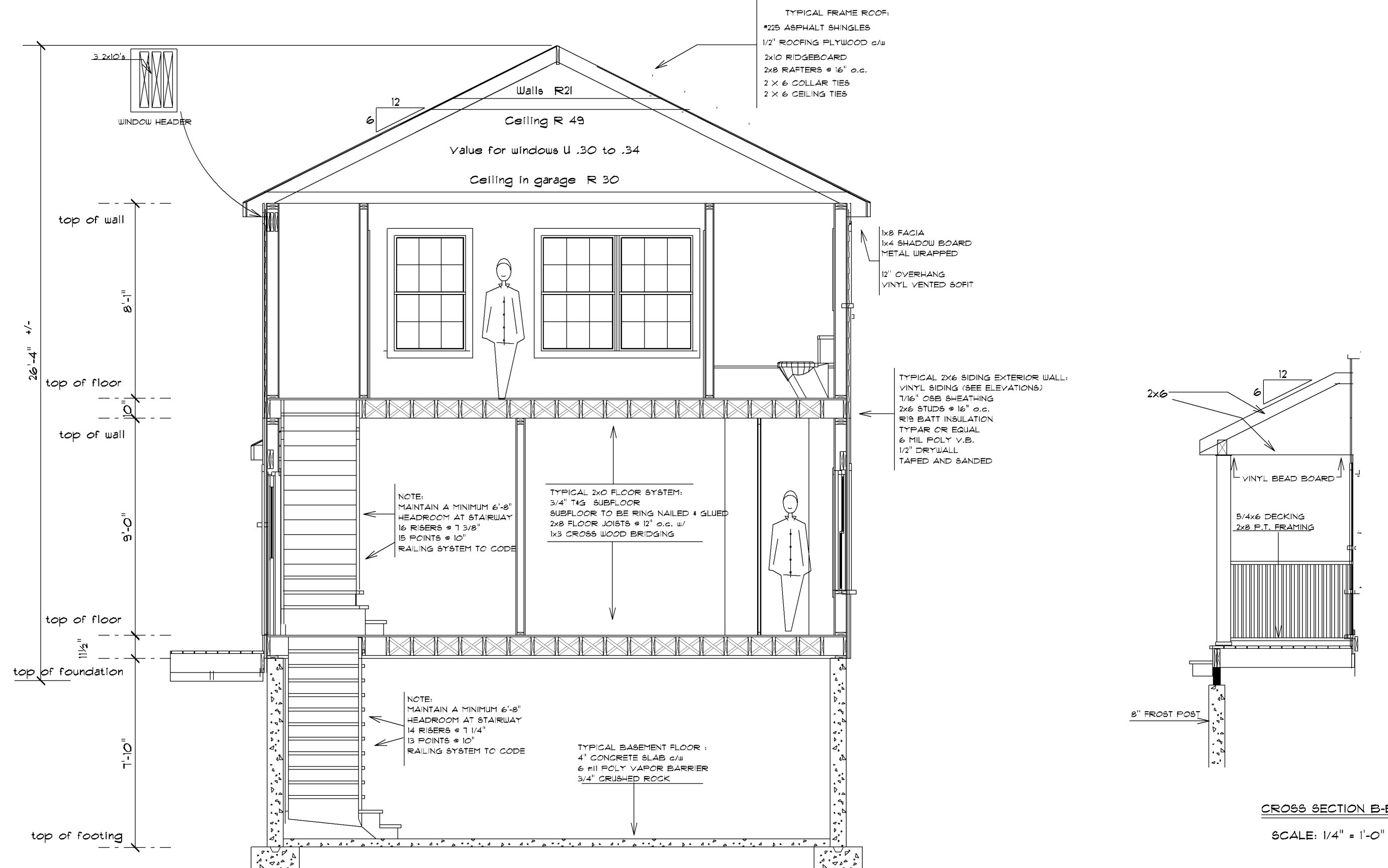


SCALE: 1/4" = 1'-0"  
FOUNDATION PLAN



CROSS SECTION A-A  
SCALE: 1/4" = 1'-0"

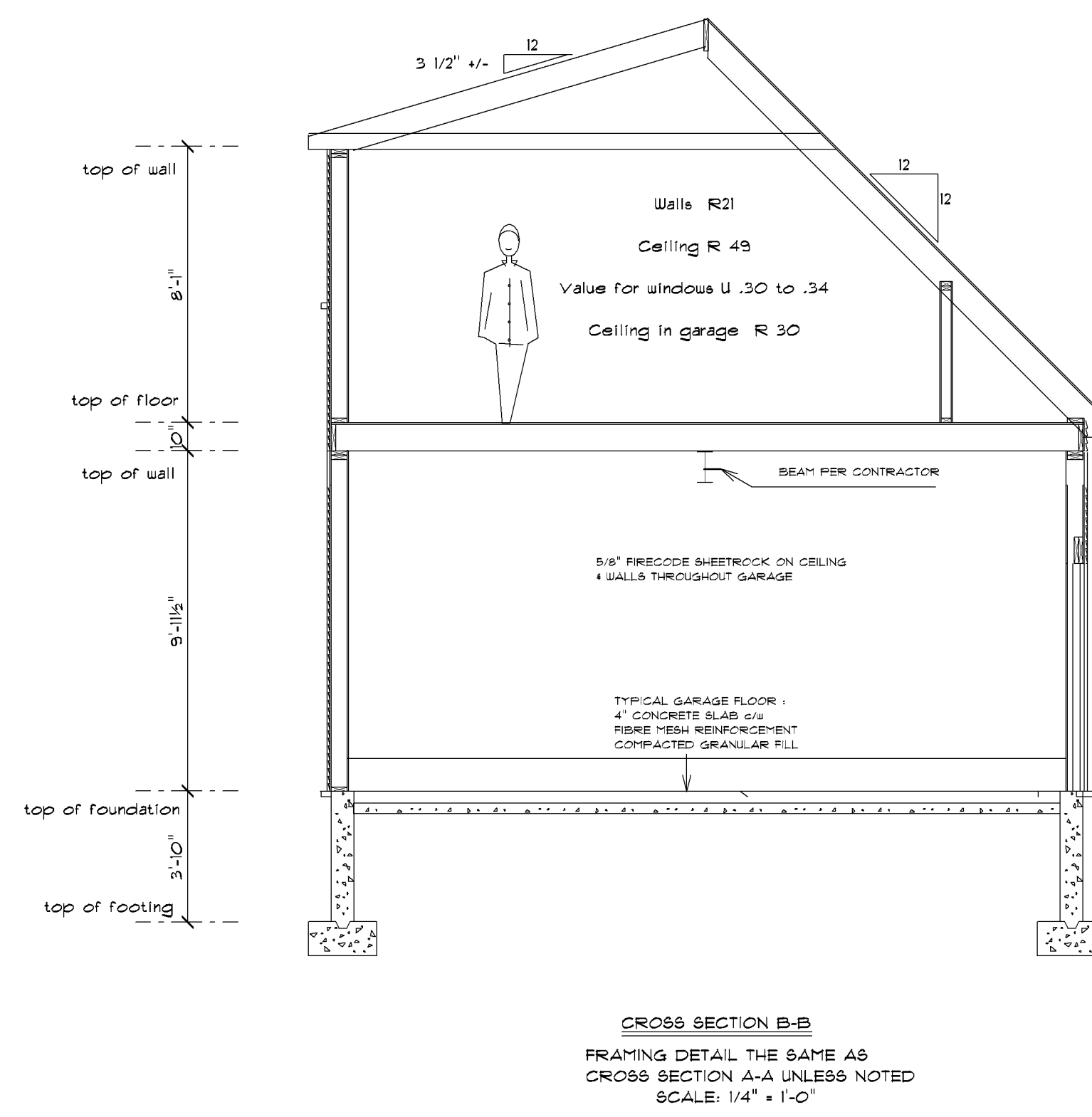
CROSS SECTION B-B  
SCALE: 1/4" = 1'-0"

FASTENERS SPACED 4 INCHES OC AT EDGES, 8 INCHES AT INTERMEDIATE SUPPORTS FOR ROOF SHEATHING. FASTENERS SPACED 4 INCHES OC AT EDGES, 8 INCHES AT INTERMEDIATE SUPPORTS FOR SUBFLOOR AND FOR ROOF SHEATHING APPLICATIONS. FASTENERS SPACED 4 INCHES ON CENTER AT EDGES, 8 INCHES AT INTERMEDIATE SUPPORTS. STAPLES SHALL HAVE A MINIMUM CROWN WIDTH OF 7/16 INCH. FOR ROOF SHEATHING APPLICATIONS, 8d NAILS ARE MINIMUM REQUIRED FOR WOOD STRUCTURAL PANELS. CASING OR FINISH NAILS SPACED 6 INCHES ON PANEL EDGES, 12 INCHES AT INTERMEDIATE SUPPORTS. CASING OR FINISH NAILS SPACED 8 INCHES ON PANEL EDGES, 12 INCHES AT INTERMEDIATE SUPPORTS. 16 INCHES (20 INCHES IF STRENGTH AXIS IN THE LONG DIRECTION OF THE PANEL, UNLESS OTHERWISE MARKED), 1/2 INCH SHEATHING AND 1-1/2 INCH LENGTH FOR 25/32 INCH SHEATHING. PANEL SUPPORTS AT CORROSION-RESISTANT STAPLES WITH NOMINAL 7/16 INCH CROWN AND 1-1/8 INCH LENGTH FOR CORROSION-RESISTANT SIDING OR CASING NAIL. DEFORMED SHANK COMMON OR DEFORMED SHANK COMMON WALLS. REFER TO SECTION 2305. NAILS FOR WALL SHEATHING ARE PERMITTED TO BE COMMON BOX OR CASING SPANS ARE 48 INCHES OR MORE. FOR NAILING OF WOOD STRUCTURAL PANEL AND PARTICLEBOARD DIAGRAMS AND SHEAR NAILS SPACED AT 6 INCHES ON CENTER AT EDGES, 12 INCHES AT INTERMEDIATE SUPPORTS EXCEPT AT SUPPORTS WHERE COMMON BOX NAILS ARE PERMITTED TO BE USED EXCEPT WHERE OTHERWISE INDICATED.

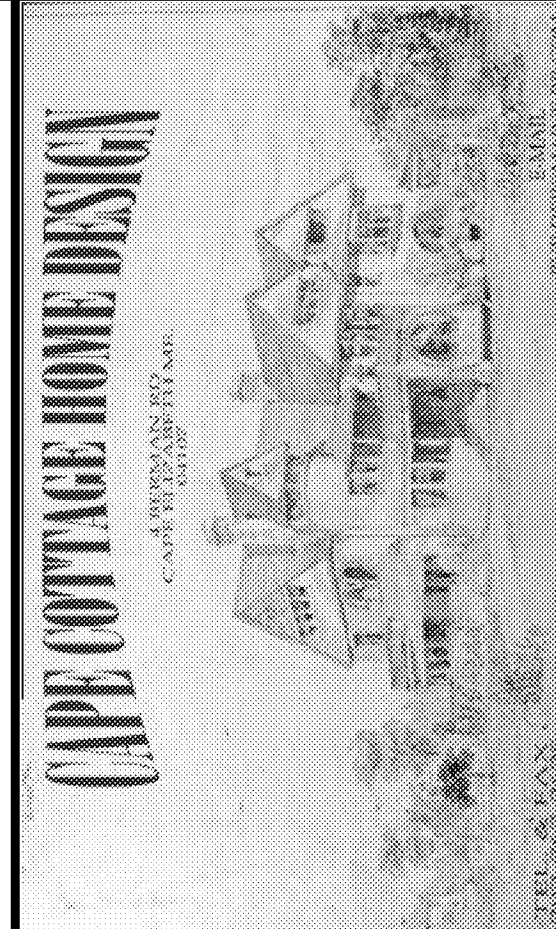
SEE NOTE:	LOCATION	FASTENING	CONNECTION	COMMON NAIL - REF TO TABLE 2308.10.4.1	FACE NAIL	TOENAIL	END NAIL	BRACED WALL PANEL	TYPICAL FACE NAIL	TOENAIL EACH END
SEE NOTE: F		8d	PANEL SIDING (TO FRAMING) 5/8"	COMMON NAIL - REF TO TABLE 2308.10.4.1	FACE NAIL	TOENAIL	END NAIL	BRACED WALL PANEL	TYPICAL FACE NAIL	TOENAIL EACH END
SEE NOTE: F		8d	PANEL SIDING (TO FRAMING) 1/2" OR LESS	COMMON NAIL - REF TO TABLE 2308.10.4.1	FACE NAIL	TOENAIL	END NAIL	BRACED WALL PANEL	TYPICAL FACE NAIL	TOENAIL EACH END
SEE NOTE: C		6d	SUBFLOOR-UNDERLAYMENT SINGLE FLOOR COMBINATION 3/4" OR LESS	COMMON NAIL - REF TO TABLE 2308.10.4.1	FACE NAIL	TOENAIL	END NAIL	BRACED WALL PANEL	TYPICAL FACE NAIL	TOENAIL EACH END
SEE NOTE: P SEE NOTE: N 8d, SEE NOTE: D, 8d, SEE NOTE: C		2" 16 GAGE 2-3/8"x0.113" NAIL 8d OR 8d	& PARTICLE BOARD WOOD STRUCTURAL PANELS 1/2" OR LESS	COMMON NAIL - REF TO TABLE 2308.10.4.1	FACE NAIL	TOENAIL	END NAIL	BRACED WALL PANEL	TYPICAL FACE NAIL	TOENAIL EACH END
SEE NOTE: O SEE NOTE: N SEE NOTE: C, J		1-3/4" 16 GAGE 2-3/8"x0.113" NAIL 8d	& PARTICLE BOARD WOOD STRUCTURAL PANELS 1/2" OR LESS	COMMON NAIL - REF TO TABLE 2308.10.4.1	FACE NAIL	TOENAIL	END NAIL	BRACED WALL PANEL	TYPICAL FACE NAIL	TOENAIL EACH END
	FACE NAIL	4-3" 14 GAGE STAPLE 4-3"x0.131" NAIL 3-16d COMMON	LEDGER STRIP	COMMON NAIL - REF TO TABLE 2308.10.4.1	FACE NAIL	TOENAIL	END NAIL	BRACED WALL PANEL	TYPICAL FACE NAIL	TOENAIL EACH END
	FACE NAIL	5-3" 14 GAGE STAPLE 5-3"x0.131" NAIL 3-16d COMMON	JOIST TO BAND JOIST	COMMON NAIL - REF TO TABLE 2308.10.4.1	FACE NAIL	TOENAIL	END NAIL	BRACED WALL PANEL	TYPICAL FACE NAIL	TOENAIL EACH END
	FACE NAIL	3-3" 14 GAGE STAPLE 3-3"x0.131" NAIL 2-16d COMMON	2-BY RIDGE BEAM ROOF RAFTER TO	COMMON NAIL - REF TO TABLE 2308.10.4.1	FACE NAIL	TOENAIL	END NAIL	BRACED WALL PANEL	TYPICAL FACE NAIL	TOENAIL EACH END
	TOENAIL	3-3" 14 GAGE STAPLE 3-3"x0.131" NAIL 2-16d COMMON	2-BY RIDGE BEAM ROOF RAFTER TO	COMMON NAIL - REF TO TABLE 2308.10.4.1	FACE NAIL	TOENAIL	END NAIL	BRACED WALL PANEL	TYPICAL FACE NAIL	TOENAIL EACH END
	FACE NAIL	3-3" 14 GAGE STAPLE 3-3"x0.131" NAIL 2-16d COMMON	JACK RAFTERS TO HIP	COMMON NAIL - REF TO TABLE 2308.10.4.1	FACE NAIL	TOENAIL	END NAIL	BRACED WALL PANEL	TYPICAL FACE NAIL	TOENAIL EACH END
	TOE NAIL	4-3" 14 GAGE STAPLE 4-3"x0.131" NAIL 3-16d COMMON	JACK RAFTERS TO HIP	COMMON NAIL - REF TO TABLE 2308.10.4.1	FACE NAIL	TOENAIL	END NAIL	BRACED WALL PANEL	TYPICAL FACE NAIL	TOENAIL EACH END
	FACE NAIL	4-3" 14 GAGE STAPLE 4-3"x0.131" NAIL 3-16d COMMON	COLLAR TIE TO RAFTER	COMMON NAIL - REF TO TABLE 2308.10.4.1	FACE NAIL	TOENAIL	END NAIL	BRACED WALL PANEL	TYPICAL FACE NAIL	TOENAIL EACH END
	AT EACH SPLICE FACE NAIL AT ENDS	3-3" 14 GAGE STAPLE 3-3"x0.131" NAIL 2-20x COMMON	BUILT-UP GIRDER & BEAMS	COMMON NAIL - REF TO TABLE 2308.10.4.1	FACE NAIL	TOENAIL	END NAIL	BRACED WALL PANEL	TYPICAL FACE NAIL	TOENAIL EACH END
	STAGGERED ON OPPOSITE SIDES FACE NAIL AT TOP & BOTTOM	3" 14 GAGE STAPLE @ 24" OC 3"x0.131" NAIL @ 24" OC 20d COMMON 3/2" OC	BUILT-UP GIRDER & BEAMS	COMMON NAIL - REF TO TABLE 2308.10.4.1	FACE NAIL	TOENAIL	END NAIL	BRACED WALL PANEL	TYPICAL FACE NAIL	TOENAIL EACH END
16" OC 16" OC 24" OC		3" 14 GAGE STAPLE 3"x0.131" NAIL 16d COMMON	BUILT-UP CORNER STUDS	COMMON NAIL - REF TO TABLE 2308.10.4.1	FACE NAIL	TOENAIL	END NAIL	BRACED WALL PANEL	TYPICAL FACE NAIL	TOENAIL EACH END
	FACE NAIL	2-3" 14 GAGE STAPLE 2-3"x0.131" NAIL 2-8d COMMON	EACH STUD & PLATE 1" DIAGONAL BRACE TO	COMMON NAIL - REF TO TABLE 2308.10.4.1	FACE NAIL	TOENAIL	END NAIL	BRACED WALL PANEL	TYPICAL FACE NAIL	TOENAIL EACH END
	TOENAIL	3-3" 14 GAGE STAPLE 3-3"x0.131" NAIL 3-8d COMMON	(SEE SECT. 2308.10.1, TABLE 2308.10.1) RAFTER TO PLATE	COMMON NAIL - REF TO TABLE 2308.10.4.1	FACE NAIL	TOENAIL	END NAIL	BRACED WALL PANEL	TYPICAL FACE NAIL	TOENAIL EACH END
NOTES	LOCATION	FASTENING	CONNECTION	NOTES	LOCATION	FASTENING	CONNECTION	NOTES	LOCATION	FASTENING

(SEE NOTES A + M FOR ALL FASTENING NOTES)

FASTENING SCHEDULE (SEE TABLE 2304.9.1 M.E.S. RESIDENTIAL CONSTRUCTION CODE FOR COMPLETE DETAILS)



CROSS SECTION B-B  
FRAMING DETAIL THE SAME AS  
CROSS SECTION A-A UNLESS NOTED  
SCALE: 1/4" = 1'-0"



THESE PLANS ARE TO BE CONSIDERED ONLY AS GENERAL GUIDELINES FOR THE CONSTRUCTION OF THIS PROJECT. PALAZZA RES. DESIGN IS NOT RESPONSIBLE FOR ANY ERRORS OR OMISSIONS THAT MAY OCCUR. THE CONTRACTOR SHALL BE RESPONSIBLE FOR OBTAINING ALL NECESSARY PERMITS AND FOR VERIFYING ALL LOCAL AND STATE BUILDING CODES. THE CONTRACTOR SHALL BE RESPONSIBLE FOR OBTAINING ALL NECESSARY PERMITS AND FOR VERIFYING ALL LOCAL AND STATE BUILDING CODES. THE CONTRACTOR SHALL BE RESPONSIBLE FOR OBTAINING ALL NECESSARY PERMITS AND FOR VERIFYING ALL LOCAL AND STATE BUILDING CODES.

CONTRACTOR:  
**PINES OF PORTLAND**

PROJECT NAME:  
**MAYFIELD STREET**

REVISIONS
DATE: JULY 22, 2004
SCALE: AS NOTED
DRAWN
FILE