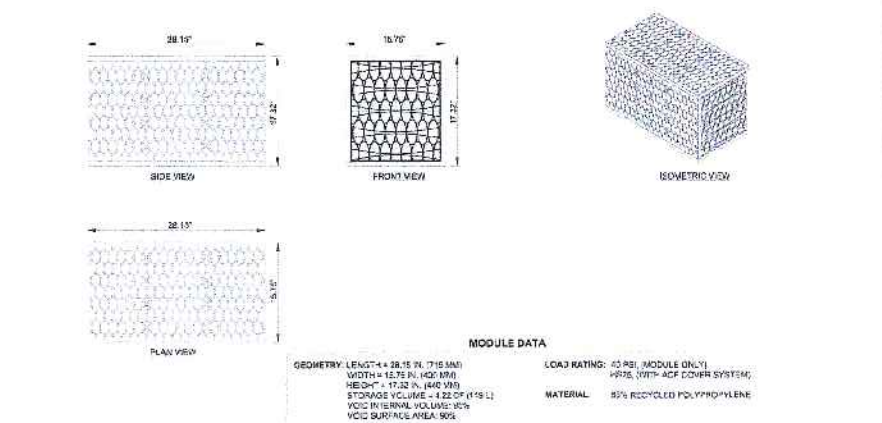


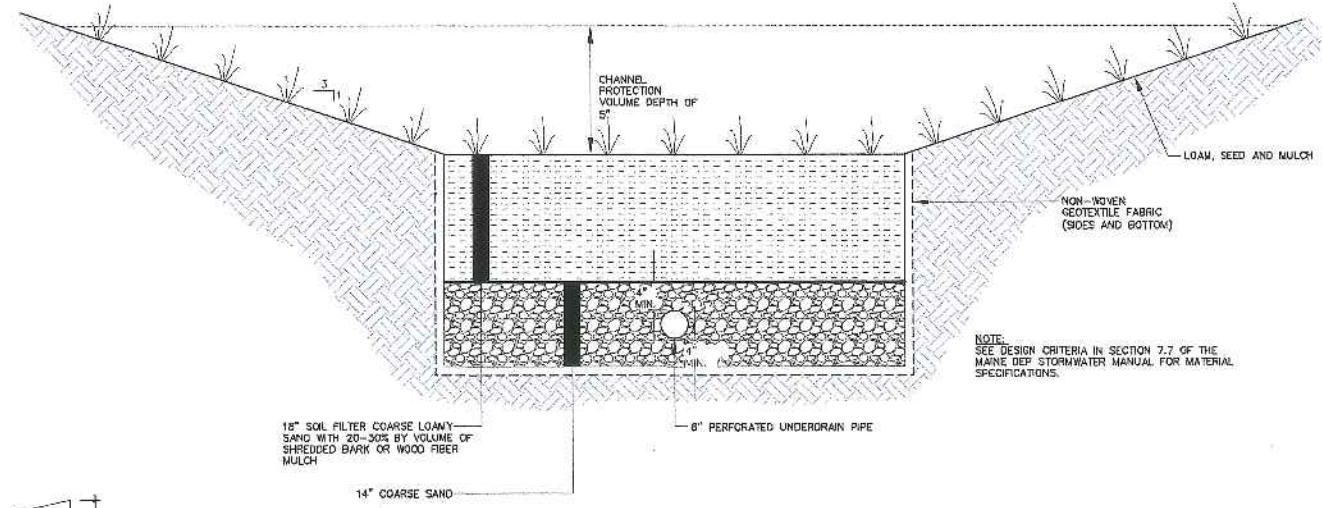
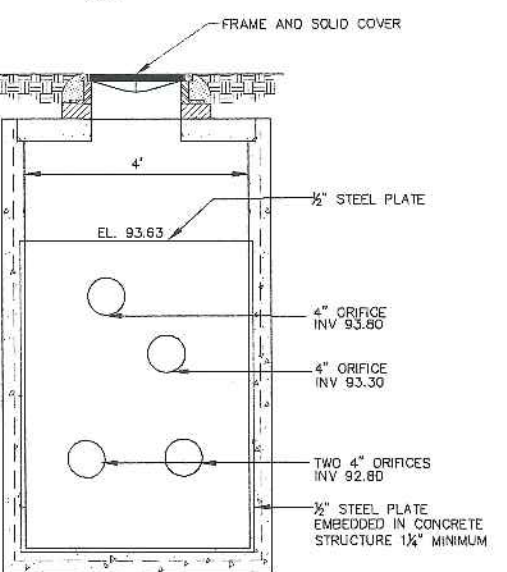
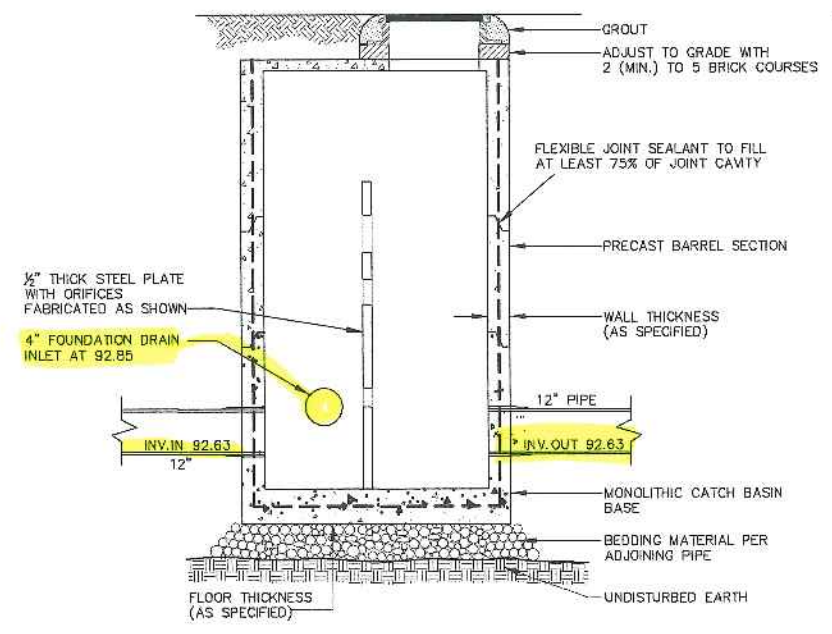
1 POROUS PAVERS & R-TANK STORMWATER SYSTEM
NOT TO SCALE

4 R-TANK INLET/OUTLET
NOT TO SCALE

6 R-TANK SINGLE AND MINI MODULES
NOT TO SCALE

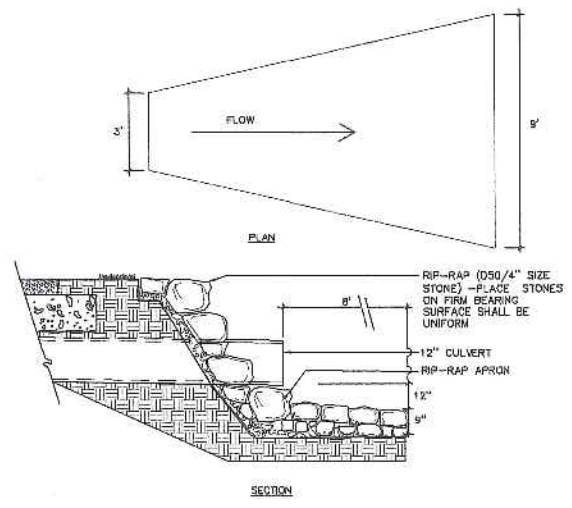
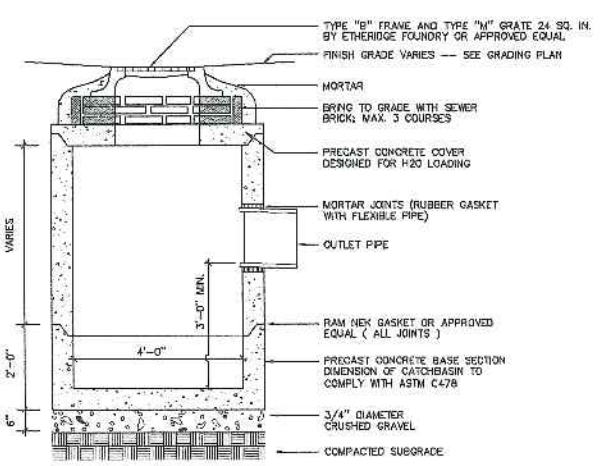


7 R-TANK SINGLE MODULES
NOT TO SCALE

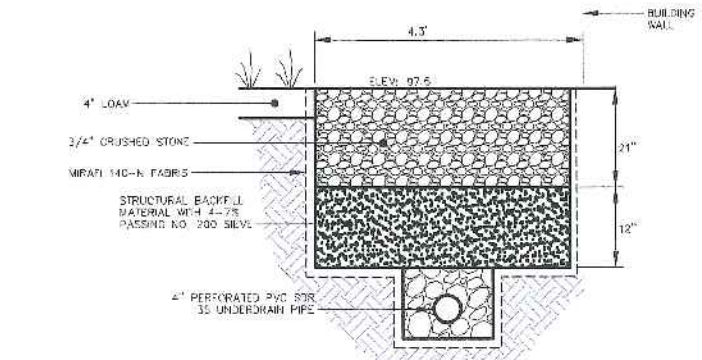


8 VEGETATED SOIL FILTER (WEST SIDE OF BUILDING)
NOT TO SCALE

2 FLOW CONTROL STRUCTURE
NOT TO SCALE



5 OCS OUTLET APRON AND RIP-RAP DETAIL
NOT TO SCALE



19 ROOF DRIPLINE FILTER DETAIL
NOT TO SCALE

3 PRECAST CONCRETE CATCHBASIN
NOT TO SCALE

Owner:
AVESTA
AVESTA 72 BISHOP STREET, L.P.
337 Commercial Avenue Tel: (207) 653-7777
Portland, Maine 04101 Fax: (207) 653-7778

Prepared By:
Mitchell & Associates
LANDSCAPE ARCHITECTS
78 Center Street Tel: (207) 774-4427
Portland, Maine 04101 Fax: (207) 974-2489

CWS
CWS ARCHITECTS
100 Commercial Street
Portland, Maine 04101
Tel: (207) 774-4427
Fax: (207) 974-2489

72 Bishop Street
Portland, Maine
72 Bishop Street

Date: JANUARY 8, 2016

Issued For: ISSUED FOR BID

Revisions: Rev. 5/22/15

Issued for: 90% Maine Housing Submission 11/25/15

Reproduction or reuse of this document without the expressed written consent of Mitchell & Associates is prohibited.

Title: STORMWATER DETAILS

Scale: AS SHOWN

Sheet No.: L7

