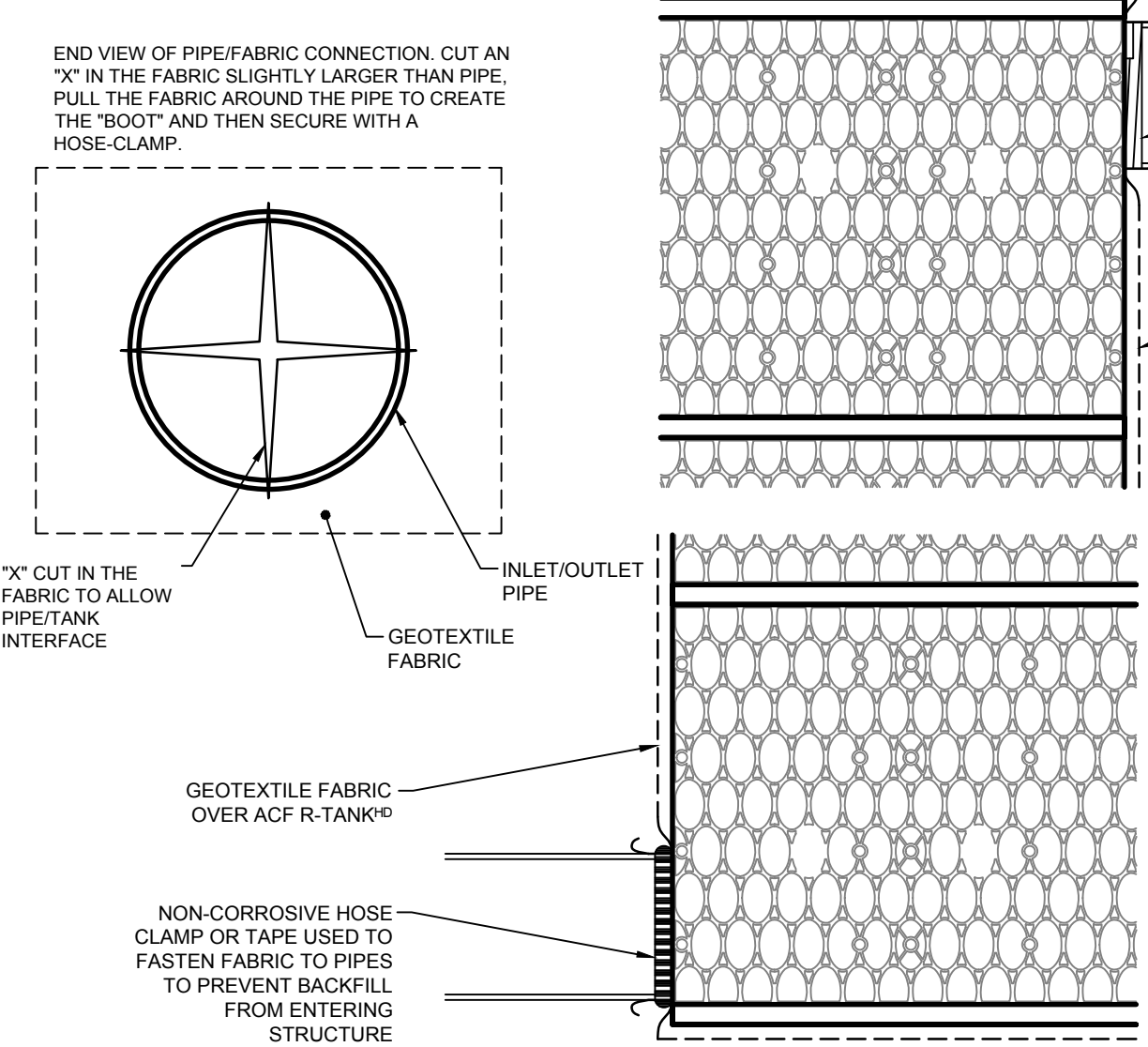
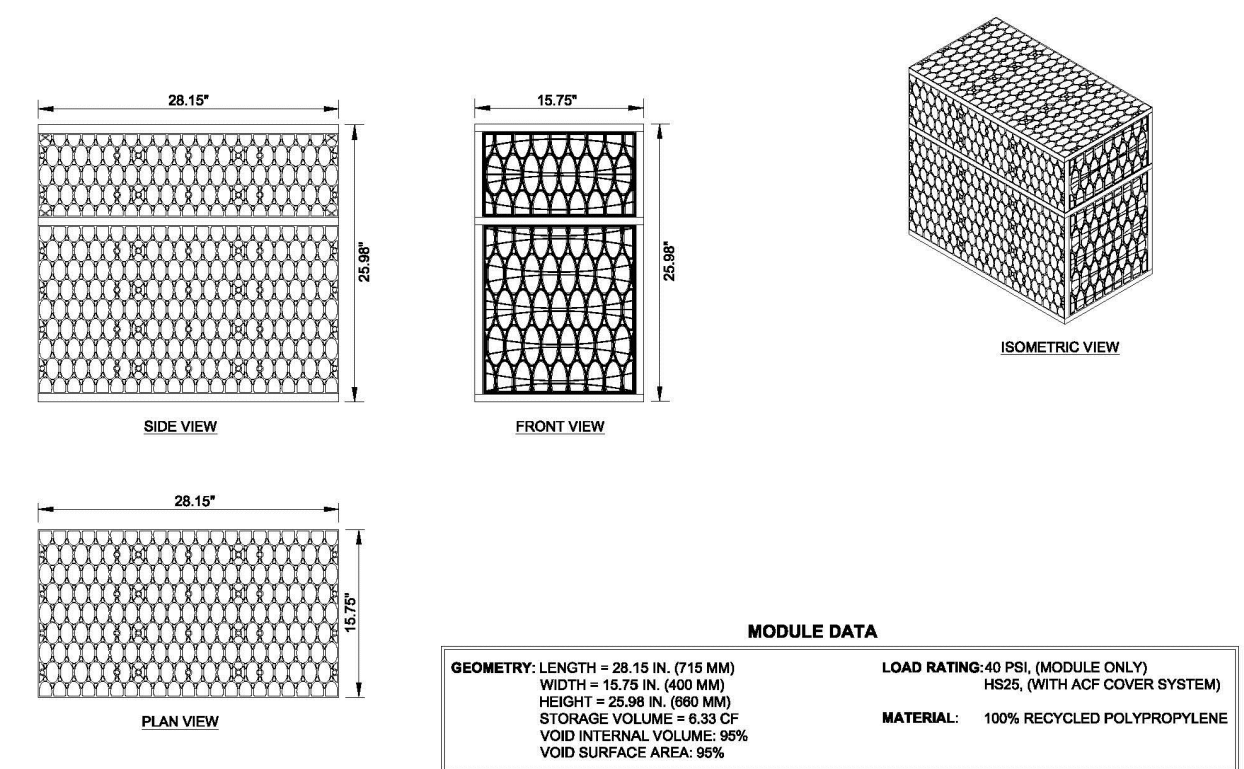


1 POROUS PAVERS & R-TANK STORMWATER SYSTEM  
NOT TO SCALE

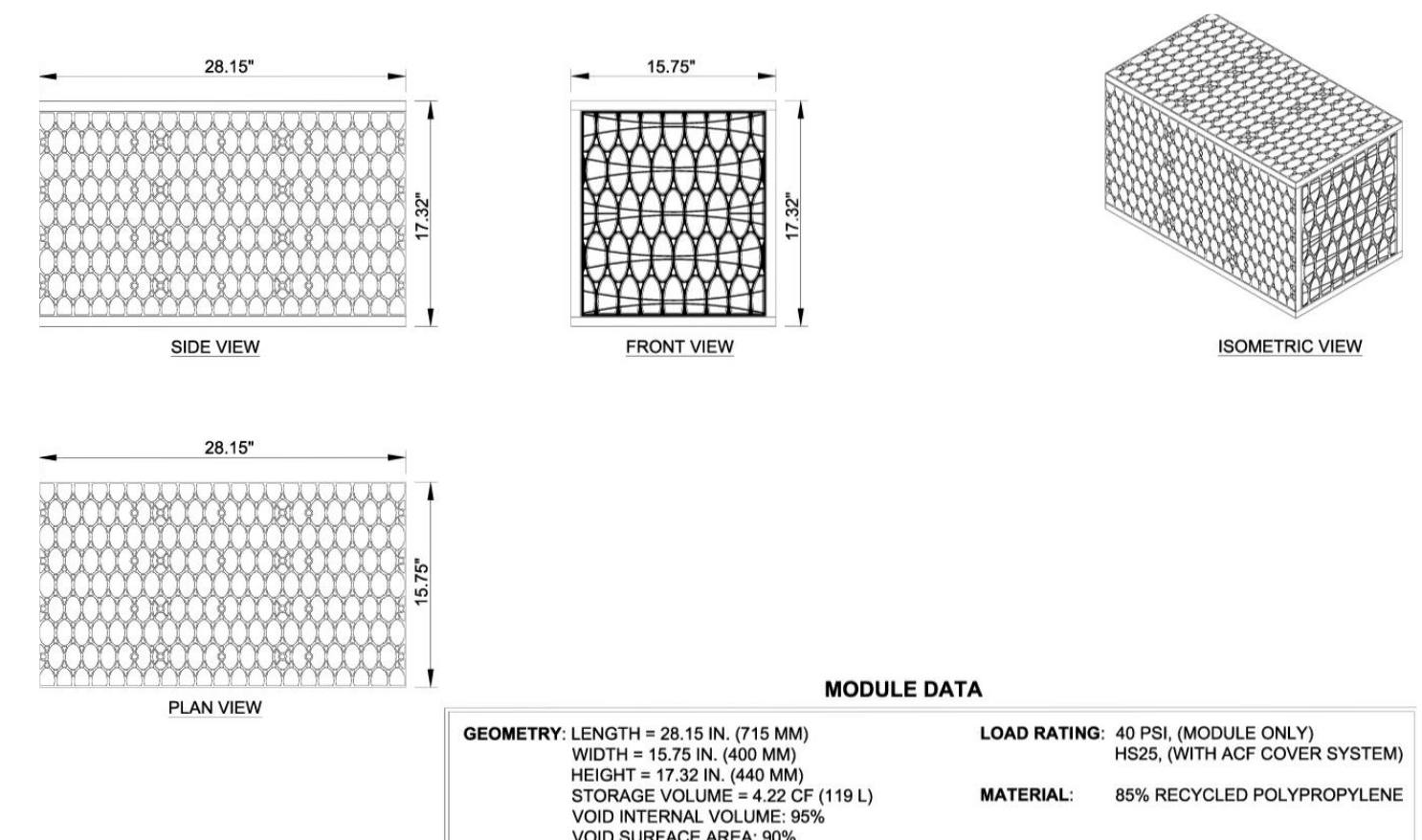


4 R-TANK INLET/OUTLET  
NOT TO SCALE

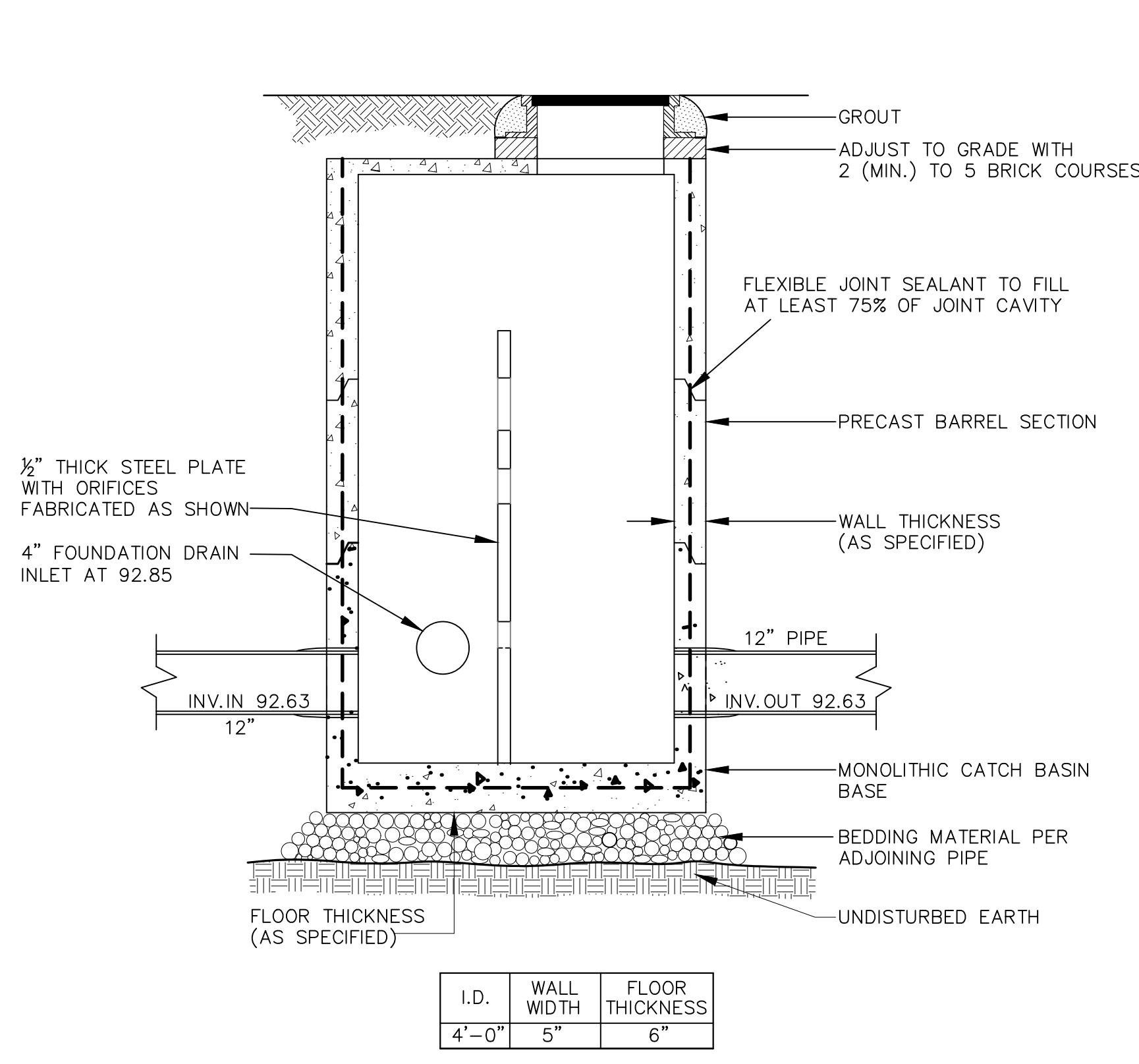
INLET/OUTLET BY: ACF ENVIRONMENTAL, 1-800-448-3636, www.acfenvironmental.com



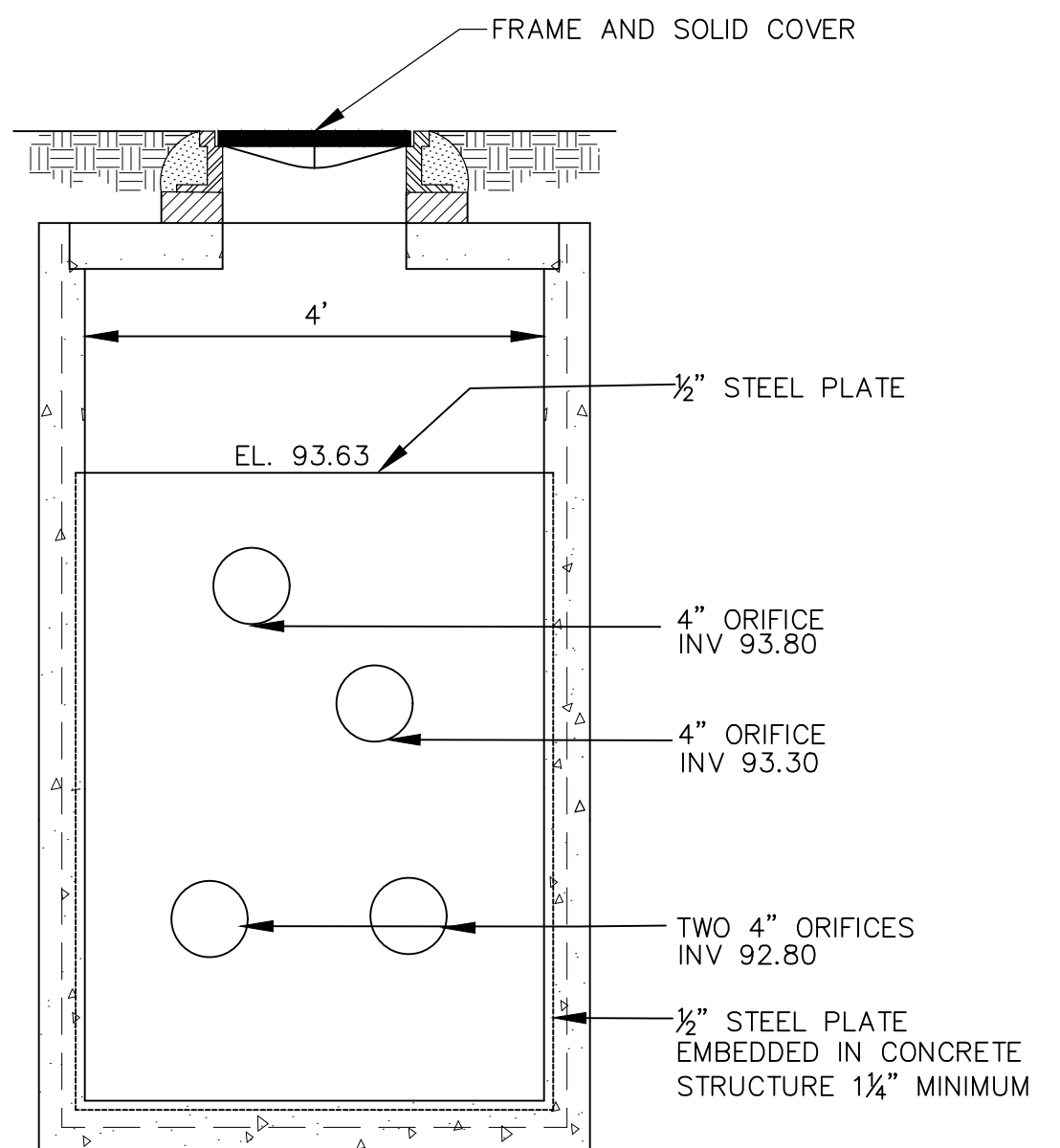
6 R-TANK SINGLE AND MINI MODULES  
NOT TO SCALE



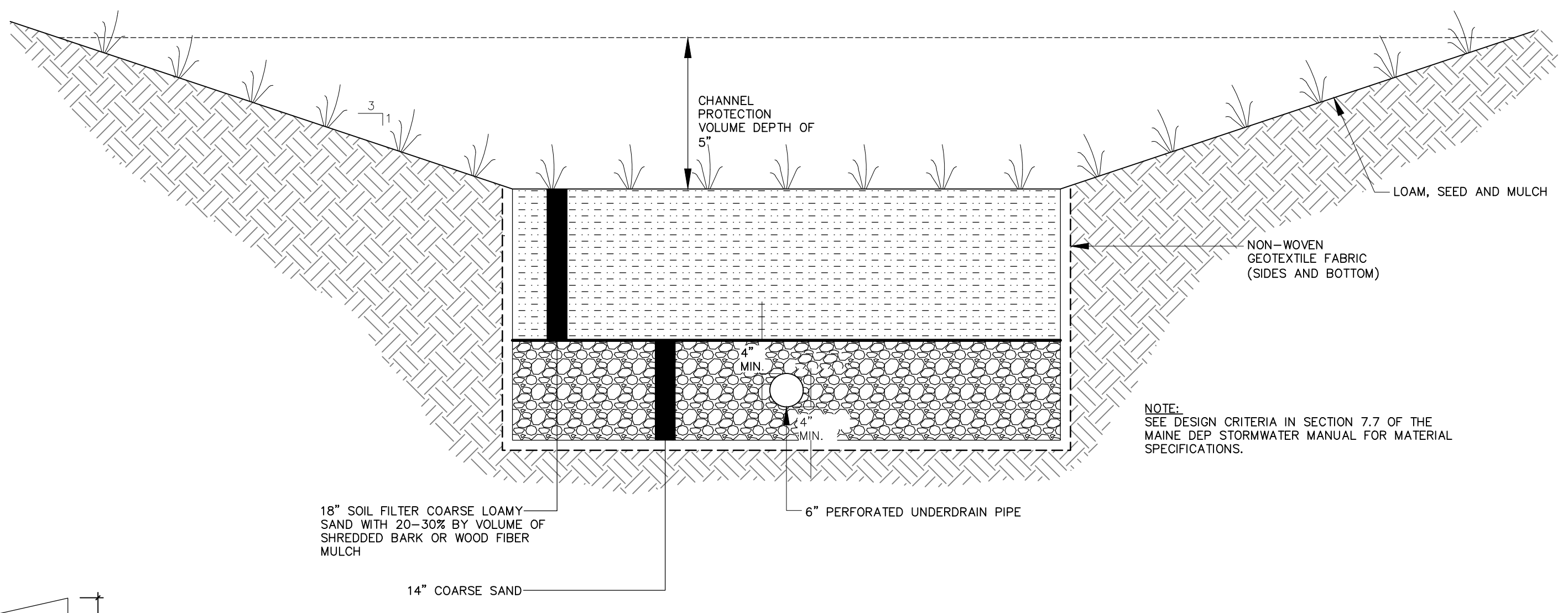
7 R-TANK SINGLE MODULES  
NOT TO SCALE



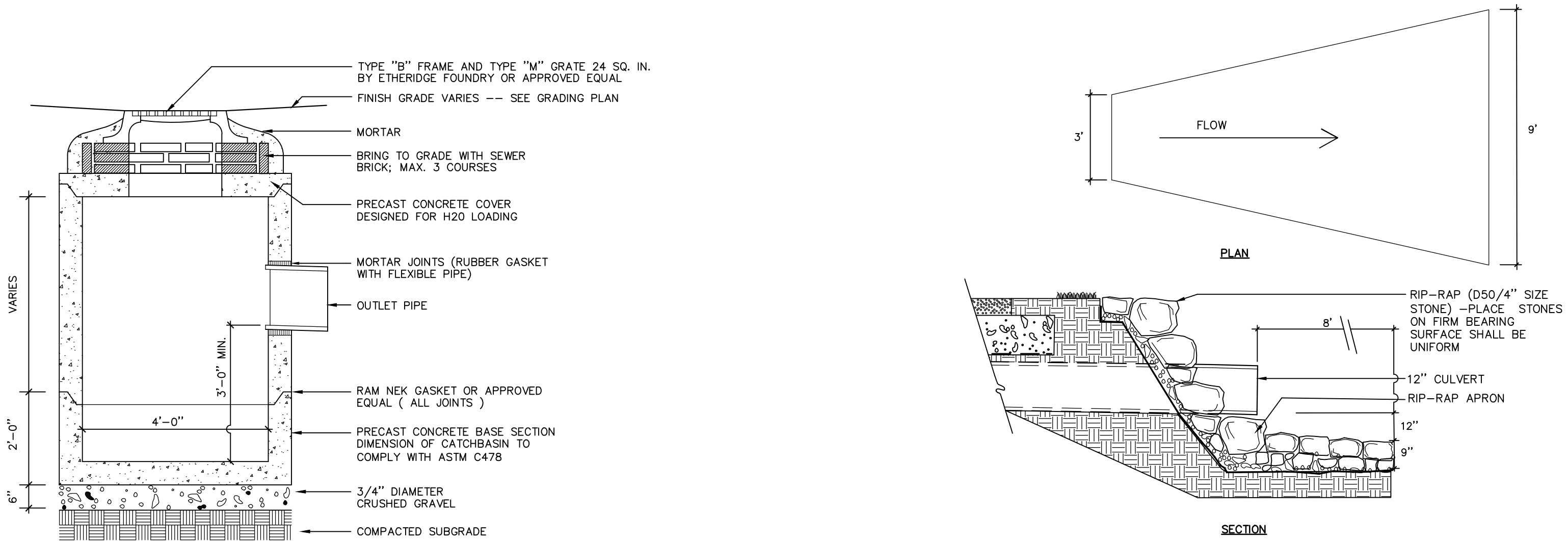
2 FLOW CONTROL STRUCTURE  
NOT TO SCALE



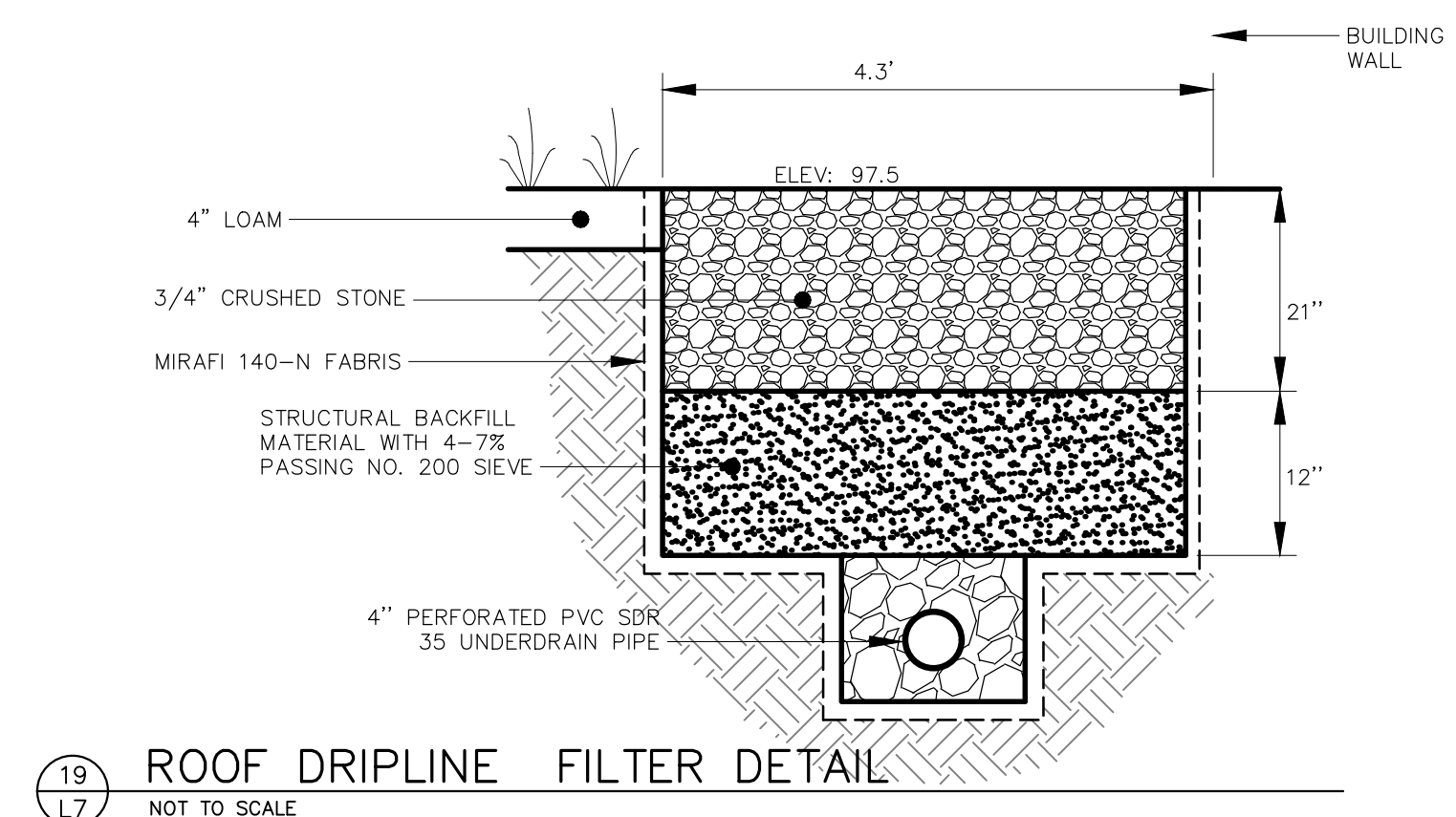
5 OCS OUTLET APRON AND RIP-RAP DETAIL  
NOT TO SCALE



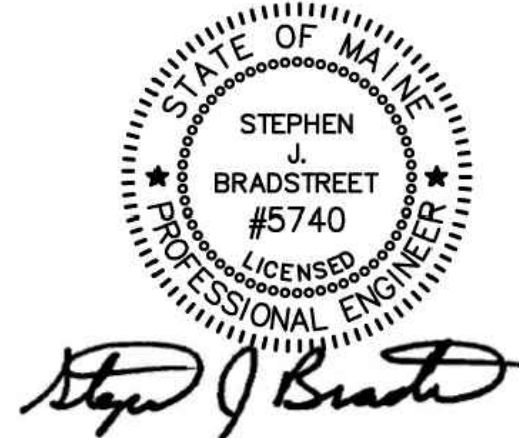
8 VEGETATED SOIL FILTER (WEST SIDE OF BUILDING)  
NOT TO SCALE



3 PRECAST CONCRETE CATCHBASIN  
NOT TO SCALE



19 ROOF DRIPLINE FILTER DETAIL  
NOT TO SCALE



Prepared For:  
Owner:  
AVESTA BISHOP STREET LP  
307 Cumberland Avenue  
Portland, Maine 04101  
Tel.: 207-553-7777

Prepared By:  
MITCHELL & ASSOCIATES  
Landscape Architects  
The Staples School  
70 Center Street  
Portland, Maine 04101  
Tel.: 207-774-4427

72 BISHOP STREET  
Portland, Maine  
Bishop Street

Date:  
APRIL 10, 2015

Issued For:  
ISSUED FOR PERMITTING

Revisions:  
Rev: 5/22/15  
Rev: 6/22/15  
Rev: 12/23/15  
Rev: 02/05/16  
conditions of approval

Reproduction or reuse of this document without the expressed written consent of Mitchell & Associates is prohibited.  
© 2014

Title:  
STORMWATER DETAILS

Scale:  
AS SHOWN

North:  
Sheet No.:  
L7