

PLANT LIST

KEY	QTY	BOTANICAL NAME	COMMON NAME	SIZE
TREES				
A. CAN	2	AMELANCHIAR CANADENSIS	SHADBLOW	5'-6' HT. CCLUMP
A. PSE	4	ACER PSEUDOSIEBOLDIANUM	KOREAN MAPLE	#7
A. RUB	5	ACER RUBUM	RED MAPLE	2" CAL
B. ALL	1	BETULA ALLEGHANENSIS	YELLOW BIRCH	2" CAL
C. OCC	1	CELTIS OCCIDENTALIS	HACKBERRY	2" CAL
C. THY	12	CHAMAECYPARIS THYOIDES	ATLANTIC WHITE CEDAR	5'-6' HT.
C. OBC	3	CHAMAECYPARIS OBTUSA 'COMPACTA'	COMPACT HINOKI FALSECYPRESS	3'-4' HT
M. CAR	4	MALUS 'CARDINAL'	CARDINAL FLOWERING CRAB	2" CAL
P. SAR	5	PRUNUS SARGENTI	SARGENT CHERRY	2" CAL
Q. BIC	7	QUERCUS BICOLOR	SWAMP WHITE OAK	2" CAL
Q. PAL	1	QUERCUS PALUSTRIS	PIN OAK	2" CAL
T. CUS	2	TAXUS CUSPIDATA 'CAPITATA'	UPRIGHT JAPANESE YEW	5'-6' HT.
T. CAN	3	TSUGA CANADENSIS	CANADIAN HEMLOCK	5'-6' HT.
SHRUBS				
A. GIR	2/6	AZALEA GIRARD'S FUSCHIA	GIARDS FUSCHIA AZALEA	#3
C. ALN	2	CLETHRA ALNIFOLIA 'RUBY SPICE'	RUBY SPICE SUMMERSWEET	#3
C. SAF	14	CORNUS SERICEA 'ARCTIC FIRE'	RED TWIG DOGWOOD	#3
D. BUR	6	DAHPNE BURKWOODI	CAROL MAKIE DAPHNE	#3
H. PAN	4	HYDRANGEA PANICULATA 'QUICKFIRE'	QUICKFIRE HYDRANGEA	#3
P. JAP	3	PIERIS JAPONICA	ANDOMEDA	#3
R. HEL	1	RHODODENDRON 'HELLIKI'	HELLIKI RHODODENDRON	#3
S. PMK	1	SYRINGA PATULA 'MISS KIM'	MISS KIM LILAC	3' HT
V. COR	3	VACCINIUM CORYMBOSUM	HIGHBUSH BLUEBERRY	#3
PERENNIALS/GROUNDCOVERS				
A. UVA	20	ARCTOSTAPHYLOS UVA-URSI	BEARBERRY	1 QT
A. ALI	18	ASTILBE 'ALIVE + KICKING'	FALSE SPIREA	1 QT
C. MOR	21	CAREX MORROWI 'EVERGOLD + ICE MIX'	EVERGOLD + ICE MIX SEDGE	1 QT
H. LS	15	HEMEROCALLIS 'LADY SCARLET'	LADY SCARLET DAYLILY	1 QT
H. GUA	32	HOSTA 'GUACAMOLE'	GUACAMOLE HOSTA	1 QT
FERNS				
A. NP	18	ATHYRIUM NPONICUM 'PICTUM'	JAPANESE PAINTED FERN	POT
A. PED	18	ANDIANTUM PEDATUM 'MAIDENHAIR'	MAIDENHAIR FERN	POT
D. ERB	15	DRYOPTERIS ERYTHROSA 'BRILLANCE'	WOOD FERN	POT
P. POL	15	POLYSTICHUM POLYBLEPHARUM	JAPANESE TASSEL FERN	POT

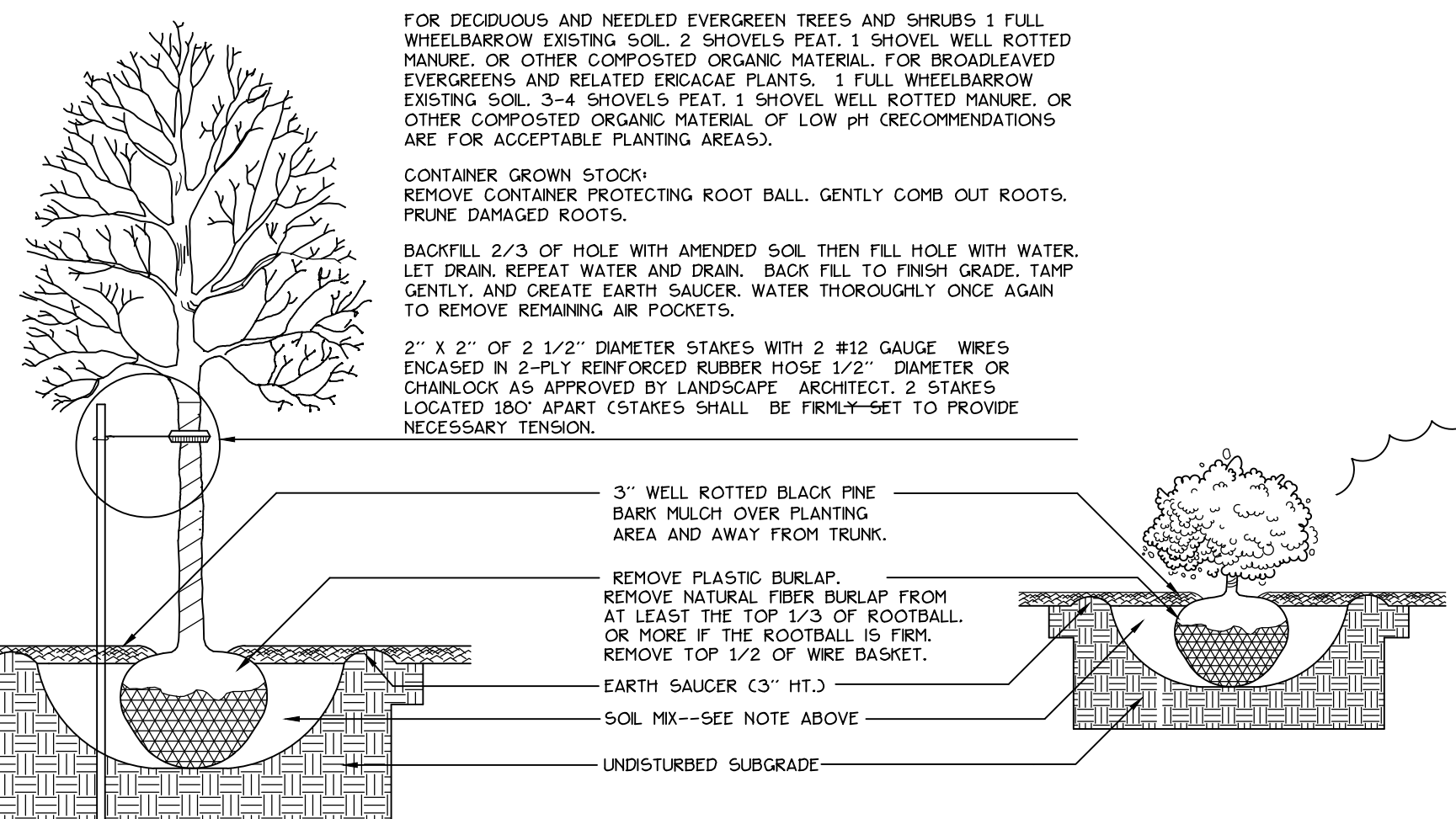
*NOTE- PERENNIALS TO BE FIELD LOCATED- COORDINATE WITH PROJECT LANDSCAPE ARCHITECT

LEGEND

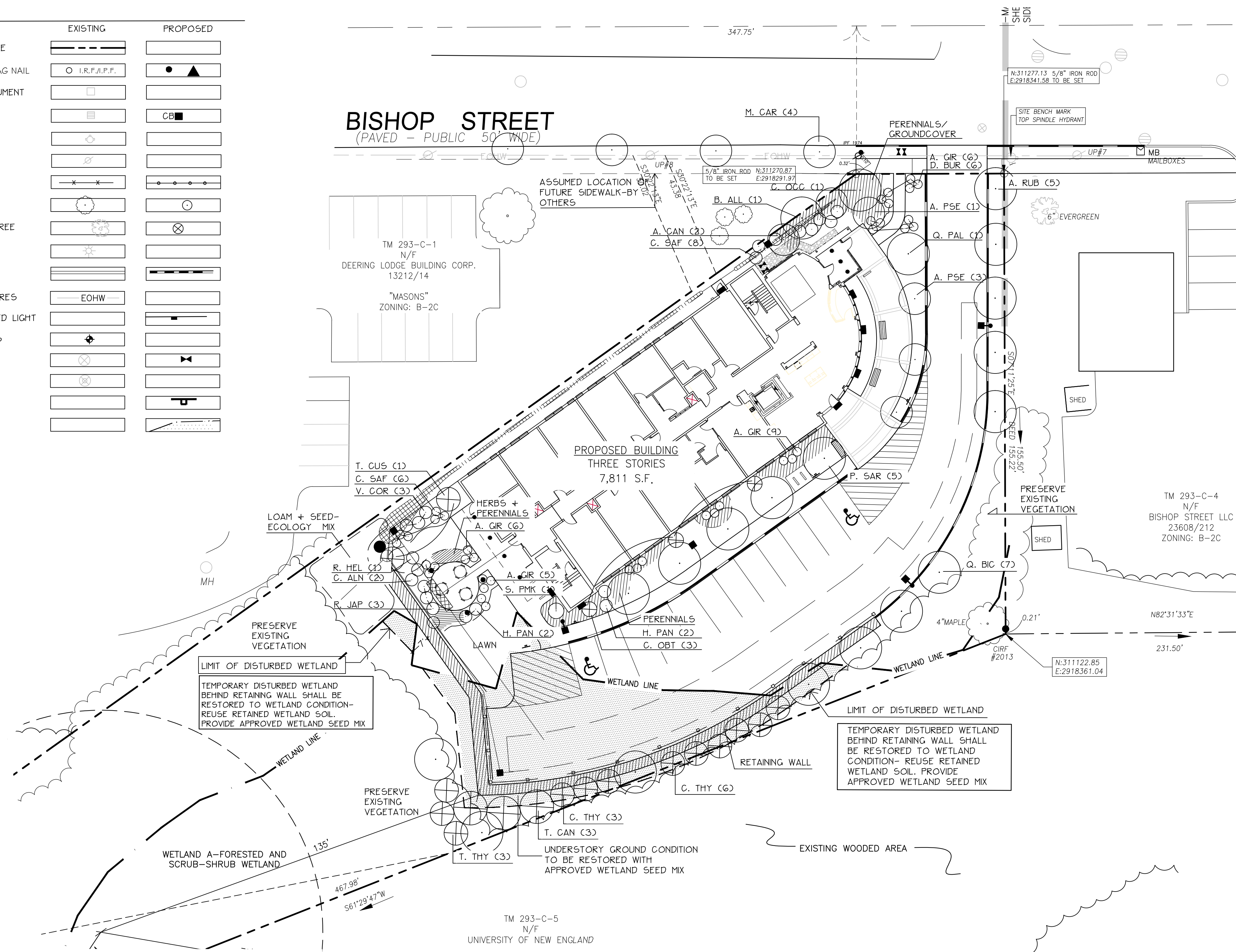
	EXISTING	PROPOSED
PROPERTY LINE	[Symbol]	[Symbol]
IRON PIPE/MAG NAIL	[Symbol]	[Symbol]
GRANITE MONUMENT	[Symbol]	[Symbol]
CATCHBASIN	[Symbol]	[Symbol]
HYDRANT	[Symbol]	[Symbol]
UTILITY POLE	[Symbol]	[Symbol]
FENCE	[Symbol]	[Symbol]
DEC. TREE	[Symbol]	[Symbol]
EVERGREEN TREE	[Symbol]	[Symbol]
LIGHT POLE	[Symbol]	[Symbol]
CURB	[Symbol]	[Symbol]
OVERHEAD WIRES	[Symbol]	[Symbol]
WALL MOUNTED LIGHT	[Symbol]	[Symbol]
SOIL BORINGS	[Symbol]	[Symbol]
WATER VALVE	[Symbol]	[Symbol]
GAS VALVE	[Symbol]	[Symbol]
SIGN	[Symbol]	[Symbol]
WETLAND	[Symbol]	[Symbol]

GENERAL PLANTING NOTES

- CALL DIG-SAFE (1-888-344-7233) PRIOR TO BEGINNING WORK. THE LANDSCAPE CONTRACTOR IS ADVISED OF THE PRESENCE OF UNDERGROUND UTILITIES AND SHALL VERIFY THE EXISTENCE AND LOCATION OF SAME BEFORE COMMENCING AND DIGGING OPERATIONS. THE LANDSCAPE CONTRACTOR SHALL REPLACE OR REPAIR UTILITIES PAVING, WALKS, CURBING, ETC. DAMAGED IN PERFORMANCE OF THIS JOB AT NO ADDITIONAL COST TO OWNER.
- CONTRACTOR SHALL THOROUGHLY FAMILIARIZE HIMSELF WITH ALL SITE CONDITIONS PRIOR TO CONSTRUCTION BIDDING.
- DO NOT SCALE FROM DRAWINGS. ANY OMISSIONS IN DIMENSIONING SHALL BE REPORTED IMMEDIATELY TO THE LANDSCAPE ARCHITECT. ANY DISCREPANCIES BETWEEN DRAWINGS, DETAILS, NOTES AND SPECS SHALL BE IMMEDIATELY REPORTED TO THE LANDSCAPE ARCHITECT FOR FURTHER DIRECTION AND RESOLUTION BEFORE ANY ADDITIONAL WORK PROCEEDS.
- PROVIDE SMOOTH TRANSITION WHERE NEW WORK MEETS EXISTING CONDITIONS.
- CONTRACTOR SHALL FURNISH AND PLACE 12 INCHES OF LOAM IN ALL SHRUB BEDS. 30 INCHES IN ALL TREE PITS, AND 6 INCHES UNDER ALL TURF AREAS. THE LANDSCAPE CONTRACTOR SHALL COORDINATE SUBGRADE PREPARATION WITH THE GENERAL CONTRACTOR PRIOR TO PLACING LOAM.
- ALL PLANT MATERIAL INSTALLED SHALL MEET THE SPECIFICATIONS OF "AMERICAN STANDARDS FOR NURSERY STOCK BY THE AMERICAN ASSOCIATION OF NURSEYMEN" LATEST EDITION.
- ALL PLANT MATERIAL SHALL BE FREE FROM INSECTS AND DISEASE.
- ALL PLANTING SHALL BE DONE IN ACCORDANCE WITH ACCEPTABLE HORTICULTURAL PRACTICES. THIS IS TO INCLUDE PROPER PLANTING MIX, PLANT BED AND TREE PIT PREPARATION, PRUNING, STAKING OR GUYING, WRAPPING, SPRAYING, FERTILIZATION, PLANTING AND ADEQUATE MAINTENANCE UNTIL ACCEPTANCE FROM THE OWNER.
- ALL GRASS, OTHER VEGETATION AND DEBRIS SHALL BE REMOVED FROM ALL PLANTING AREAS PRIOR TO PLANTING.
- PRIOR TO SITE CLEARING, CONTRACTOR SHALL COORDINATE WITH PROJECT LANDSCAPE ARCHITECT TO DEMARCATRE TREES FOR PROTECTION AND WETLAND AREAS TO BE PROTECTED. EXISTING TREES TO BE PRESERVED SHALL BE PROTECTED DURING CONSTRUCTION AND SHALL BE THE RESPONSIBILITY OF THE GENERAL CONTRACTOR.
- ALL SHRUB BEDS AND TREE PITS SHALL BE MULCHED WITH 3" CLEAN SHREDDED BLACK MULCH (DO NOT EXCEED 3" DEPTH).
- ANY DEVIATION FROM THE LANDSCAPE PLAN, INCLUDING PLANT LOCATION, SELECTION, SIZE, QUANTITY, OR CONDITION SHALL BE REVIEWED AND APPROVED BY THE OWNER AND LANDSCAPE ARCHITECT (AND MUNICIPAL AUTHORITY, IF APPLICABLE) PRIOR TO INSTALLATION ON SITE.
- WHERE INDICATED ON PLAN, PLANTING SOIL MIXTURE FOR GROUND COVER AND PERENNIAL BED AREAS SHALL CONSIST OF FOUR PARTS TOPSOIL, TWO PARTS SPHAGNUM PEAT MOSS, AND ONE PART HORTICULTURAL PERLITE BY VOLUME. PEAT MOSS MAY BE SUBSTITUTED WITH WELL-ROTTED OR DEHYDRATED MANURE OR COMPOST. ROTOTILL BEDS TO A DEPTH OF 8 INCHES.
- DAMAGE TO EXISTING SITE IMPROVEMENTS DURING INSTALLATION OF LANDSCAPE MATERIAL SHALL BE THE RESPONSIBILITY OF THE LANDSCAPE CONTRACTOR.
- ALL WORK WITHIN THE ROAD RIGHT-OF-WAY AND ALL UTILITIES CONNECTING TO INFRASTRUCTURE WITHIN THE ROAD SHALL MEET CITY OF PORTLAND TECHNICAL MANUAL STANDARDS.
- ECOLOGY SEED MIX: 80% HARD FESCUE, 20% CHEWINGS FESCUE



BISHOP STREET
(PAVED - PUBLIC 50' WIDE)



Prepared For:
Owner:
AVESTA BISHOP STREET LP
307 Cumberland Avenue
Portland, Maine 04101
Tel.: 207-553-7777

Prepared By:
MITCHELL & ASSOCIATES
Landscape Architects
The Staples School
70 Center Street
Portland, Maine 04101
Tel.: 207-774-4427

72 BISHOP STREET
Portland, Maine
Bishop Street

Date:
APRIL 10, 2015

Issued For:
SITE PLAN AND SUBDIVISION
PLAN REVIEW

Revisions:
Rev: 5/22/15

Reproduction or reuse of this document without the expressed written consent of Mitchell & Associates is prohibited. © 2014

Title:
PLANTING PLAN

Scale: 1" = 20'

North: [Compass Rose]

Sheet No.:
L4

