

- PROPOSED LIGHTING FIXTURES  
 A - 18" POLE BEACON VIPOR  
 B - BEACON METRO BOLLARDS  
 C - BEACON TRAVERSE (LED) 10"  
 D - BEACON TRAVERSE (LED) 16"  
 E - BEACON CEILEO (LED)  
 F - STEP LIGHT (LED)



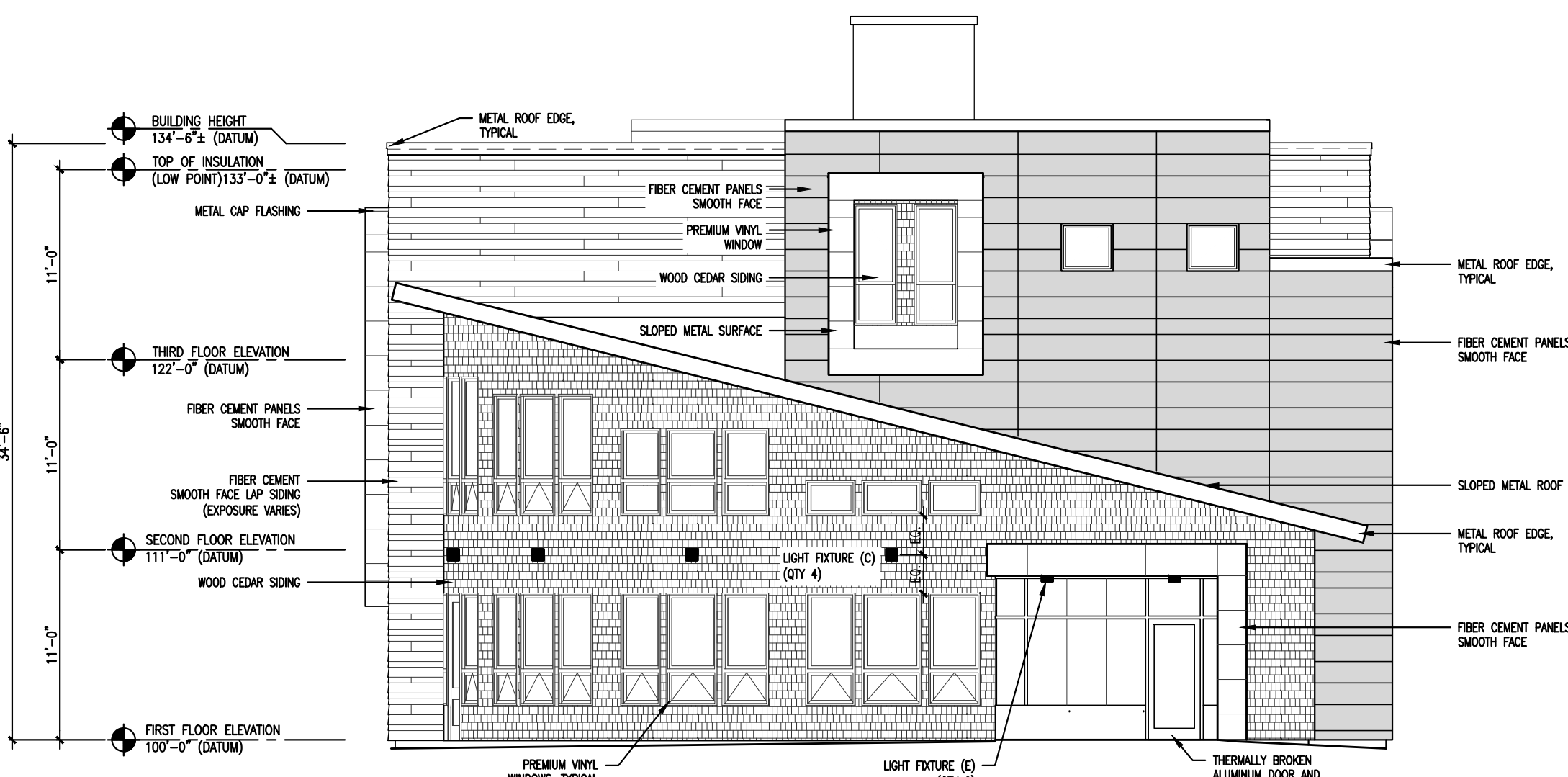
**A2** NORTH ELEVATION

SCALE: 1/8" = 1'-0"



**A5** SOUTH ELEVATION

SCALE: 1/8" = 1'-0"



**A3** EAST ELEVATION

SCALE: 1/8" = 1'-0"



**E3** WEST ELEVATION

SCALE: 1/8" = 1'-0"

DESIGNER

CWS ARCHITECTS  
ARCHITECTURE | INTERIOR DESIGN  
434 CUMBERLAND AVENUE  
PORTLAND, MAINE 04101  
T: 207.774.4441  
F: 207.774.4016  
WWW.CWSARCH.COM

OWNER

AVESTA BISHOP STREET, LP

307 CUMBERLAND AVE.,  
PORTLAND, MAINE 04101

PROJECT

BISHOP STREET  
APARTMENTS

72 BISHOP STREET  
PORTLAND, MAINE 04101

DRAWING

EXTERIOR ELEVATIONS

CWS PROJECT NUMBER: 14-013

REVISIONS

NO.	DATE	DESCRIPTION

DRAWING NUMBER

**A3.00**

SCALE: AS NOTED  
DATE: ##/##/##

ISSUED FOR