

DESIGNER

CWS ARCHITECTS
ARCHITECTURE | INTERIOR DESIGN
434 CUMBERLAND AVENUE
PORTLAND, MAINE 04101
P: 207.774.4016
WWW.CWSARCH.COM

OWNER

AVESTA BISHOP STREET LP
307 CUMBERLAND AVE.
PORTLAND, MAINE 04101

PROJECT

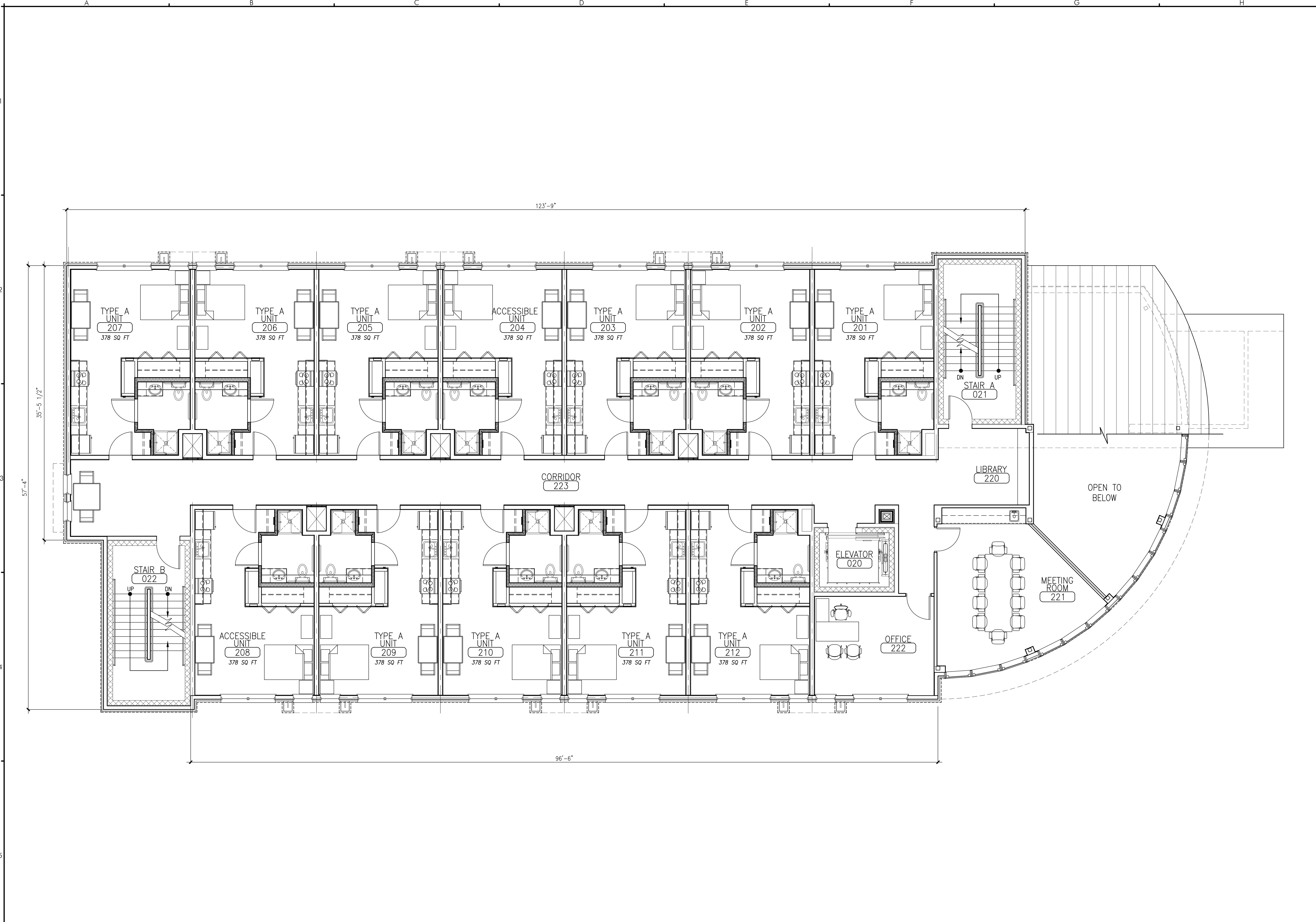
BISHOP STREET APARTMENTS
PORTLAND, MAINE 04101

DRAWING

SECOND FLOOR PLAN
CWS PROJECT NUMBER:

REVISIONS

DRAWING NUMBER
A1.02
SCALE: AS NOTED
DATE: 05/29/15



A5 SECOND FLOOR PLAN

SCALE: 3/16" = 1'-0"

©2015 CWS Architects. All rights reserved. This drawing is the property of CWS Architects and is not to be reproduced without written permission.