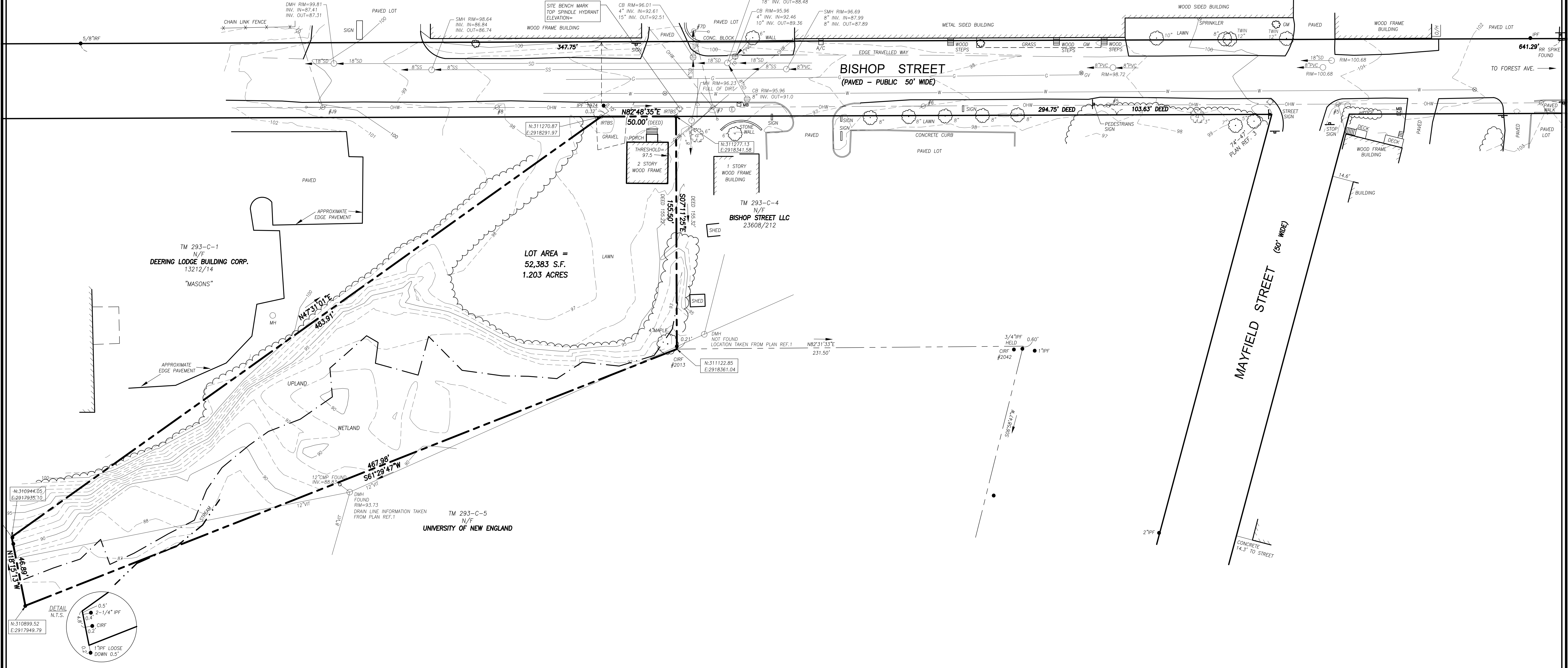
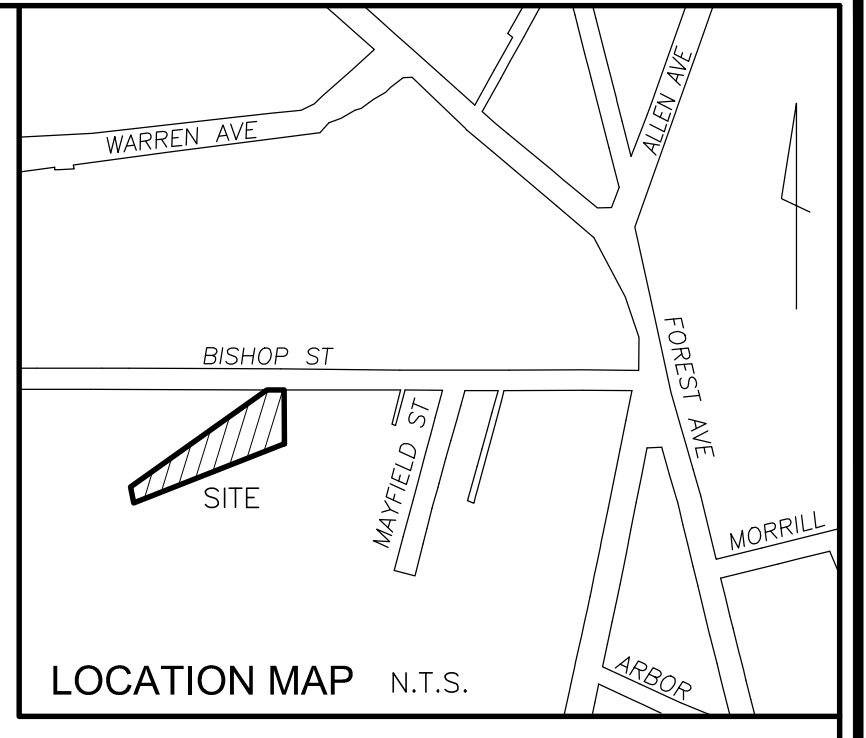


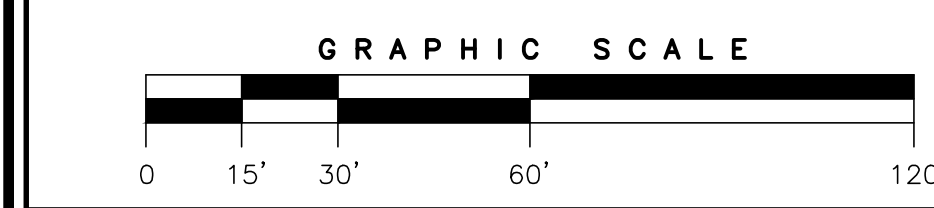
LEGEND

● IRON PIPE OR ROD FOUND	— X — X — FENCE
○ IR/BS 5/8" IRON ROD TO BE SET	— OHW — OVERHEAD WIRES
○ WATER VALVE	— T — TELEPHONE
○ MANHOLE	— W — WATER LINE
○ HYDRANT	— SS — SANITARY SEWER
○ CATCH BASIN	— SD — STORM DRAIN
○ UTILITY POLE	— G — GAS LINE
○ SIGN	— 100 — 1' CONTOUR
○ MB MAILBOX	— (Wavy line) — EDGE OF WOODS
○ GM GAS METER	— (Dotted line) — DECIDUOUS TREE
○ GV GAS VALVE	— (Dotted line) — CONIFEROUS TREE
	— (Dotted line) — SHRUB/BUSH



UTILITY NOTE

THE UNDERGROUND UTILITIES SHOWN HAVE BEEN LOCATED FROM FIELD SURVEY INFORMATION AND EXISTING DRAWINGS. THE SURVEYOR MAKES NO GUARANTEES THAT THE UNDERGROUND UTILITIES SHOWN COMPRISE ALL SUCH UTILITIES IN THE AREA, EITHER IN SERVICE OR ABANDONED. THE SURVEYOR FURTHER DOES NOT WARRANT THAT THE UNDERGROUND UTILITIES SHOWN ARE IN THE EXACT LOCATION INDICATED ALTHOUGH HE DOES CERTIFY THAT THEY ARE LOCATED AS ACCURATELY AS POSSIBLE FROM THE INFORMATION AVAILABLE. THE SURVEYOR HAS NOT PHYSICALLY LOCATED THE UNDERGROUND UTILITIES. CALL 1-800-DIGSAFE AT LEAST THREE BUSINESS DAYS BEFORE PERFORMING ANY CONSTRUCTION. DUE TO OSHA CONFINED SPACE REQUIREMENTS, ALL INVERTS AND PIPE SIZES MUST BE VERIFIED PRIOR TO ANY CONSTRUCTION.



- PLAN REFERENCES**
- "PLAN OF LAND IN PORTLAND, MAINE FOR WESTBROOK COLLEGE AUGUST 20, 1974 OWEN HASKELL, INC. JOB NO. 7445 P" REVISED 5/4/89
 - "BOUNDARY SURVEY ATHLETIC FIELD UNIVERSITY OF NEW ENGLAND STEVENS AVENUE & BISHOP STREET PORTLAND, MAINE OCTOBER 2007 COLONIAL SURVEYING COMPANY, LLC"
 - WORKING DRAWING OF MAYFIELD STREET, BISHOP STREET AND STEVENS AVENUE IN FILES OF H.I. & E.C. JORDAN - SURVEYORS
 - "SITE PLAN OF PROPERTY ON BISHOP STREET, PORTLAND, MAINE MADE FOR PLASMINTE TECHNOLOGY, INC. OCT. 1, 1991 OWEN HASKELL, INC. JOB NO. 91163P"

- NOTES**
- OWNERS OF RECORD: HED/WAY DEVELOPMENT, 24 SAND POINT ROAD, CUMBERLAND FORESIDE, MAINE 04110, CUMBERLAND COUNTY REGISTRY OF DEEDS BOOK 8575 PAGE 272.
 - LOCUS IS SHOWN AS BLOCK C LOT 2 AND 3 ON PORTLAND PROPERTY MAP 293.
 - BEARINGS ARE BASED ON MAINE STATE PLANE COORDINATE SYSTEM MAINE WEST NAD83 AND ELEVATIONS ARE NAVD88 AS BASED ON STATIC GPS COLLECTION AND OPUS CORRECTION.
 - BASED ON THE CITY OF PORTLAND GIS, THERE IS A SEWER LINE THAT CROSSES THIS PROPERTY. WE HAVE FOUND NO EVIDENCE OF THIS SEWER LINE ON THIS PROPERTY NOR HAVE WE FOUND A DEED FOR ANY EASEMENT RELATED TO THIS SEWER LINE.
 - WETLANDS DELINEATED BY CES, INC.

CERTIFICATE

OWEN HASKELL, INC. CERTIFIES THAT THIS PLAN IS BASED ON, AND THE RESULT OF, AN ON THE GROUND FIELD SURVEY AND THAT TO THE BEST OF OUR KNOWLEDGE, INFORMATION AND BELIEF, IT CONFORMS TO THE BOARD OF LICENSURE FOR PROFESSIONAL LAND SURVEYORS CURRENT STANDARDS OF PRACTICE, WITH THE EXCEPTION OF MARKERS NOT SET AT ALL CORNERS.

DATE _____ JOHN C. SCHWANDA, PLS #1252

REV. 1	01/20/15	ADDITIONAL LOCATION / TOPOGRAPHY
BOUNDARY & TOPOGRAPHIC SURVEY		
AT 72 BISHOP STREET, PORTLAND, MAINE MADE FOR AVESTA HOUSING 307 CUMBERLAND AVENUE, PORTLAND, MAINE		
OWEN HASKELL, INC. 390 U.S. ROUTE ONE, FALMOUTH, ME 04105 (207) 774-0424 PROFESSIONAL LAND SURVEYORS		
Drwn By	JCS	Date
Trace By	JLW	JULY 17, 2014
Check By	JCS	Scale
Book No.	1125	1" = 30'
		Job No.
		2014-031P
		Drwg. No.
		1