

DESIGNER

CWS ARCHITECTS  
ARCHITECTURE | INTERIOR DESIGN  
434 CLIMBERLAND AVENUE  
PORTLAND, MAINE 04101  
P: 207.774.4016  
WWW.CWSARCH.COM

OWNER

AVESTA  
307 CLIMBERLAND AVE.,  
PORTLAND, MAINE  
04101

PROJECT

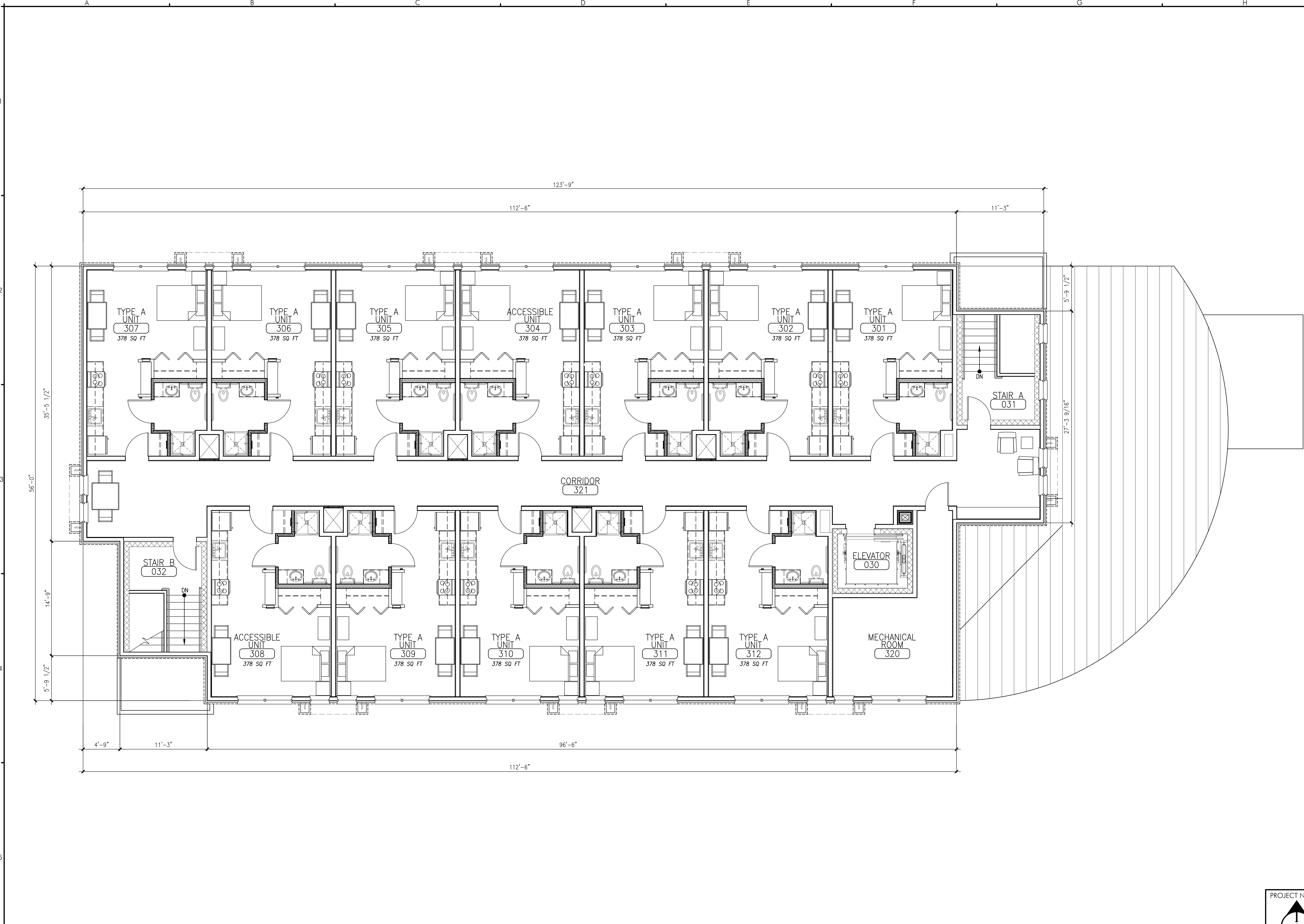
72 BISHOP STREET  
PORTLAND, MAINE

DRAWING

THIRD FLOOR PLAN  
CWS PROJ. NO.: 14.013

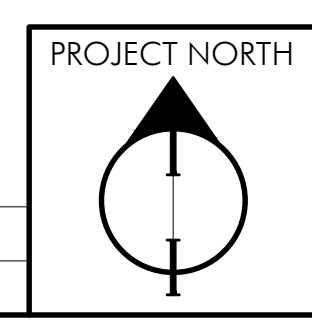
REVISIONS

NO.	DESCRIPTION



**A5** THIRD FLOOR PLAN

SCALE: 3/16" = 1'-0"



DRAWING NUMBER  
**A1.03**  
SCALE: AS NOTED  
DATE: 04/10/15

REVIEW