

DESIGNER

CWS ARCHITECTS
ARCHITECTURE | INTERIOR DESIGN
434 CUMBERLAND AVENUE
PORTLAND, MAINE 04101
P: 207.774.4016
WWW.CWSARCH.COM

OWNER

AVESTA
307 CUMBERLAND AVE.,
PORTLAND, MAINE
04101

PROJECT

72 BISHOP STREET
PORTLAND, MAINE

DRAWING

FIRST FLOOR PLAN
CWS PROJ. NO.: 14-013

REVISIONS

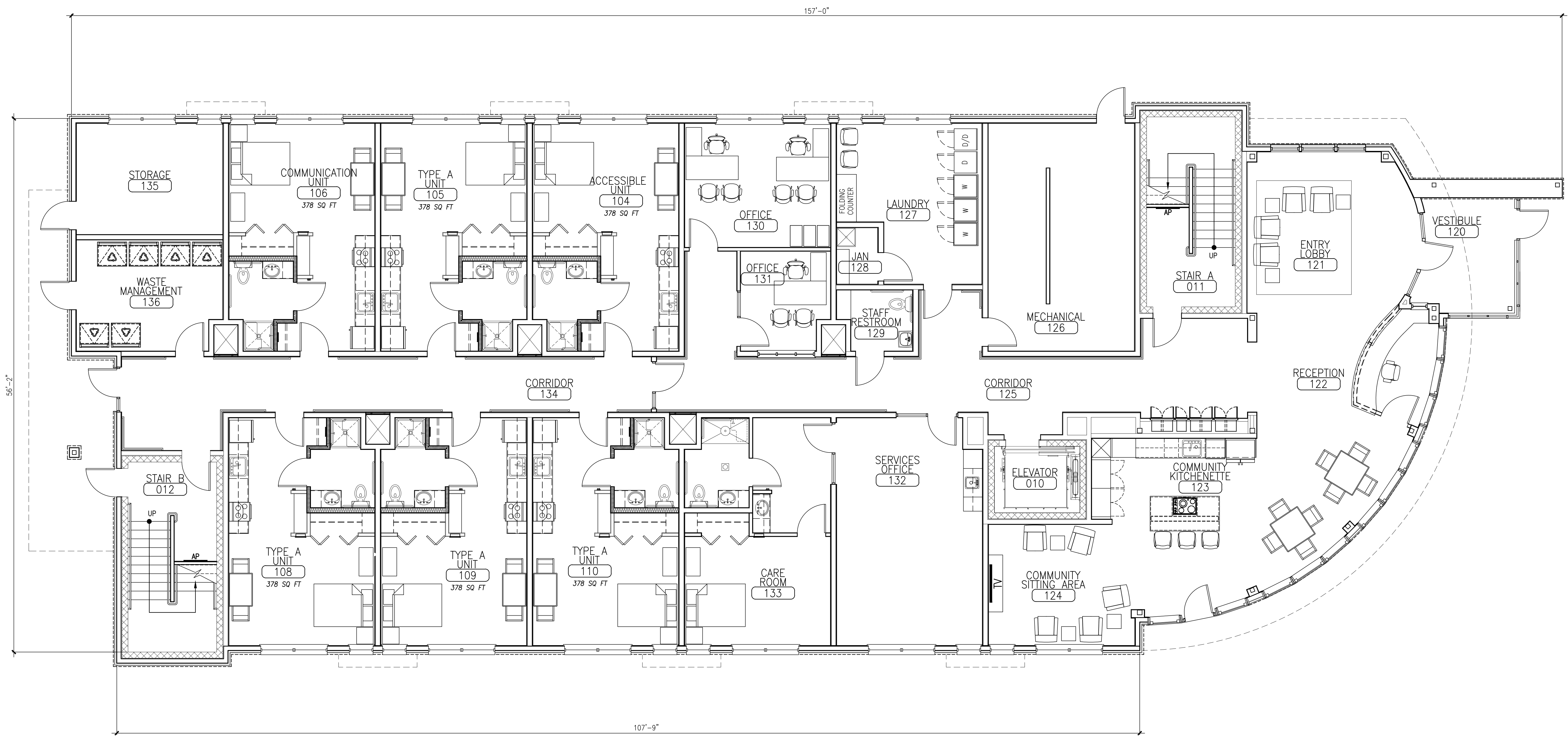
NO.	DESCRIPTION

DRAWING NUMBER

A1.01

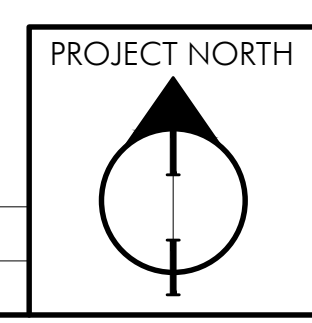
SCALE: AS NOTED
DATE: 04/10/15

REVIEW



A5 FIRST FLOOR PLAN

SCALE: 3/16" = 1'-0"



© 2014 CWS Architects, Inc. All Rights Reserved. No part of this drawing may be reproduced without the written consent of CWS Architects, Inc.